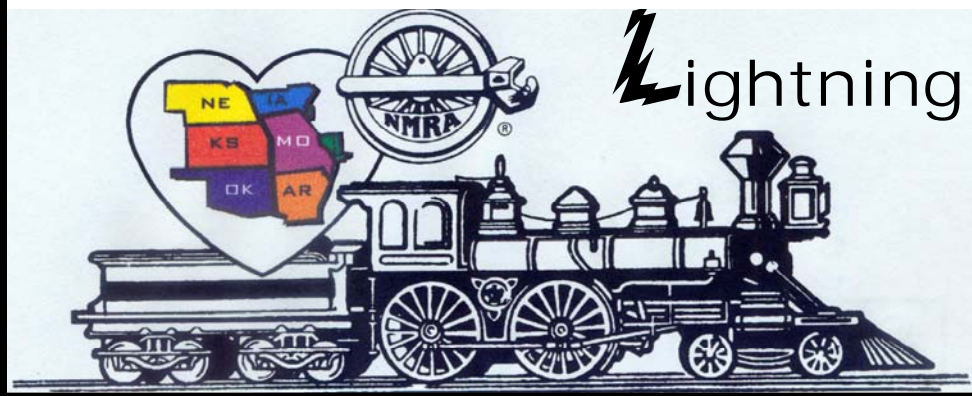


Turkey Creek Division



Lightning Slinger



VOL. 19 NO. 8

“For all gauges and all ages”

August 2006

MONTHLY PUBLICATION OF THE TURKEY CREEK DIVISION
OF THE MID-CONTINENT REGION, NMRA

**Don't forget about the
Turkey Creek Meet on
August the 12, 2006
8:30am to 2:00pm**

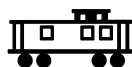
You are invited to the Division Meet
Division Meetings and

become involved in the activities of the Division.

To be involved just contact me by email paul@purgatoryanddevilriver.com

or phone 816-866-4043 and I will be happy to help you.

Paul Richardson, MMR 816-866-4043



From THE SUPER'S DESK....

Paul Richardson, MMR

IMPORTANT NOTICE

**As the Division Meet will be held on August 12th
there will NOT be an August Division Meeting.**

The Turkey Creek Division met at Union Station on July 25th. Following a welcome to visitors and first-time attendees, Larry Alfred spoke regarding the 2007 Mid-Continent Region Convention. As no division volunteered to host the Region Convention it has been agreed the region business meeting will be held in conjunction with our meet, the day before or the day after the 2007 Turkey Creek Division Meet. The contest room in 2007 will be a Region Contest room so bring your models and get them entered. You might just win a plaque(s) to hang on your train room wall.

New Master Model Railroaders –

The Turkey Creek Division is pleased to announce the addition of 3 new MMRs this month. Stephen Priest, Rick McClellan and Paul Myers are the newest Master Model Railroaders in the Turkey Creek Division. Jim EuDaly and Stephen Priest received their MMR plaques at the July Meeting and Rick and Paul should receive their plaques at a future meeting. I would like to extend my sincere congratulations to these new Masters and invite you to do the same. We have 4 or 5 more members who are working toward Master Model Railroader and getting close to qualification. It is possible that the Turkey Creek Division could have 8 or more new MMRs in 2006. **WOW!**

I would be remiss if I failed to point out the tremendous resources available to anyone working in the Achievement Program in the Kansas City area. I think Pat Harriman has an article elsewhere in this issue with some very interesting statistics regarding the Kansas City area and Master Model Railroaders so I won't steal his thunder with the interesting info he shared with me recently. The bottom line is: If you are working in the AP or want to work in the AP but don't know how to get started, we **HAVE** the resources to help. All you have to do is ask.

Upcoming Clinic -

At the September Meeting, Jim EuDaly, MMR will present his "Scale Color Clinic. A career as an optometrist made Jim aware of color vision characteristics and this clinic is an attempt to understand "scale color" and apply the knowledge to our modeling efforts. Items such as light intensity, color temperature, size and distance and other factors will be discussed and illustrated with slides. Formulas for modifying colors will be presented for the common modeling scales and a handout containing a synopsis of the clinic will be available.

Call for Clinicians -

We need a clinician or two for the October meeting and a 2nd Clinic for September would be welcome so dust off one you have stored away or if you have never given a clinic, please consider hosting a clinic. It's fun and you can earn volunteer points in the Achievement Program. It can be a short clinic or a half hour to an hour if you wish. Call me at 816-866-4043 or email paul@purgatoryanddevilriver.com and I will get your clinic on the calendar.

Division Meet – August 12th

In just a few days the Division will be hosting the annual Turkey Creek Division Meet.

We need all the volunteers we can get to make this activity a success. If you would like to volunteer contact Chairman Paul Myers or me and we will help you get involved. Our phone numbers are in this document.

I invite you to attend the Division Meet and the Division Meetings and become involved in the activities of the Division. To get the most from your NMRA membership you need to put effort into it. I invite you to get the maximum from your membership. I know from my own experience you will enjoy the NMRA and the Division more if you become involved in the activities of the Division. If you want to be involved but you are just unsure of how to do it, please contact me by email paul@purgatoryanddevilriver.com or phone 816-866-4043 and I will be happy to help you.

REMEMBER – The next monthly meeting is September 26th – 7:00PM at our usual location at the Johnson County Courthouse NE Branch 6000 Lamar, Shawnee Mission, Kansas on the Southwest corner of Martway and Lamar.

Until next month, "Keep 'em on the Rails",

Paul Richardson, MMR
Turkey Creek Superintendent



OFFICERS

Superintendent

Paul Richardson, MMR
H 816-866-4043 O 816-767-7523
paul@purgatoryanddevilriver.com

Paymaster

Jack Boren
913-962-2408
mccjbcmd@mindspring.com

Clerk

Louis Seibel
913-393-3495
l-seibel@comcast.net

Division Director

Paul Myers
816-734-3719
paulwmyers@kc.rr.com

Train Show Chairman for 2006

Paul Myers
816-734-3719
paulwmyers@kc.rr.com

Membership Chair Editor

Gary Hankins
913-782-3645
marlystee@aol.com

L S Editor

Ted Tschirhart
816-861-3449
tedtschi@kc.rr.com
[news@mcpr-nmra.org/divisions/
turkeycreek](mailto:news@mcpr-nmra.org/divisions/turkeycreek)

AP Merit Awards and Achievement.

Joe B. Robertson, MMR
816-331-2773
piperval@aol.com

Web Master

Paul Myers 816-734-3719
Paulwmyers@kc.rr.com

Web

www.mcor-nmra.org/divisions/turkeycreek

TURKEY CREEK DIVISION
IS A 501(C)(3) ORGANIZATION

Memories, or feeling the etchings on my slabs.

By Warren K. Weston, MMR
and old has-been

"Way back when I first thought about "building" trains, I found a hobby shop near 39th and Main in KC. I was working then at Regal Plastic Co. working under my Dad who was Plant Superintendent. The modeling treasures were kits consisting of four or five pieces of wood [the fifth piece would be the center beam under the car], a printed heavy piece of paper [that sometimes maybe embossed] for the top, sides and ends, a dummy coupler and a pair of trucks. Strombecker had a complete train, 1/8" scale, that I built. My crowning achievement was to polish a Plexiglas rod that would shine a oval pattern on the track ahead.

One day, while riding in to work on the street car, I mentioned to Dad that I wanted to stop at the hobby shop on the way home. During the day Dad wanted me to go to a hardware store and buy something that was needed. He told me softly "take your time about going" and loudly "But you hurry back". After work when I reminded him about stopping at the hobby shop is when I learned about voice inflection.

Another fabulous hobby shop I will long remember was four blocks north of the square in Independence. The hobby shop was in the living room portion of a very small house and the family lived in the remainder. I think the guy's name was Joe and he would try to buy any new kit the we, the customer, wanted. Things were booming now, they were even coming out with more metal in the kits - and injection molded plastic. They even supplied wire for the piping and handrails. We also had AB brake system components.

Later on my work place was again out in Westport and I met a lot of people and learned a lot of skills from Harold Schupp, "the beard". Harold had a hobby shop in the basement at Vanden-Boome furniture near 39th and Broadway. I would drive up there for lunch time with my nose bag and listen to the masters of that era talk of their efforts to build kits and castings and even get down to cars and locomotives.

Later, Harold had a balcony area in Joe Falk Toys in the 1100 block of Grand. Since my work place had moved to 19th and Grand I had to spend considerable time at Joe Falk's. Now the manufacturers were coming out with injection molded car sides, tops and ends. These first efforts had limited success since the plastic would migrate to other configurations with time or temoerature. And of all things they were even bringing out diesels in plastic. Brass was the choice material for locomotives, cars and even diesels.

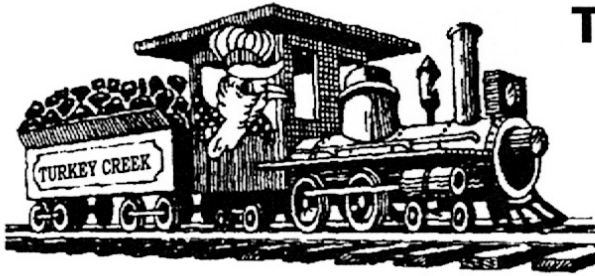
Joe Falk moved to a basement on 12th between Main and Baltimore. They had an operating layout that you had a birdseye view over and if you placed your hand on the window sign the trains would run.

There were several other early history hobby shops [but not on this slab and I'm too old to move another in place right now]. I sure wish we could be back to the days of yore - the hobby was much better, the people in the hobby had a chance to learn more - but then just think of all that money selling table space at our shows and meets.



You can email your Memories to tedtschi@kc.rr.com





MODEL RAILROADING

Turkey Creek 2006 Division Meet

August 12, 2006 – 8:30 am to 2:00 pm
 Lenexa Community Center,
 13420 Oak, Lenexa, KS

(Just southeast of the railroad tracks at the intersection of Pflumm Rd. and Santa Fe Dr.)

Activities planned for this year's meet include:

- **Clinics** – a full slate of clinics covering many aspects of the modeling railroad hobby.
- **Model & Photo Contests** – by popular vote (NMRA judging on request). *Each model (up to a maximum of 5 models) you enter in the model contest will automatically qualify you to be entered into a special drawing to receive a \$50.00 gift voucher.*

Special Youth Award for the best overall youth model entry (under 18).

- **Door Prizes** – Additional door prizes will be set aside for advance registrants.
- **Display Layout and Layout Tours** – In addition to the display layout at the meet, several local modelers will be opening their homes to layout tours in the afternoon and evening. Layout tour maps will be available for collection with your registration.
- **Swap Tables and Railroad Groups** – Expect to find more than 70 tables from area dealers, local hobbyists and other railroad groups.
- **Food and Refreshments** – We will have food and refreshments available during the show.

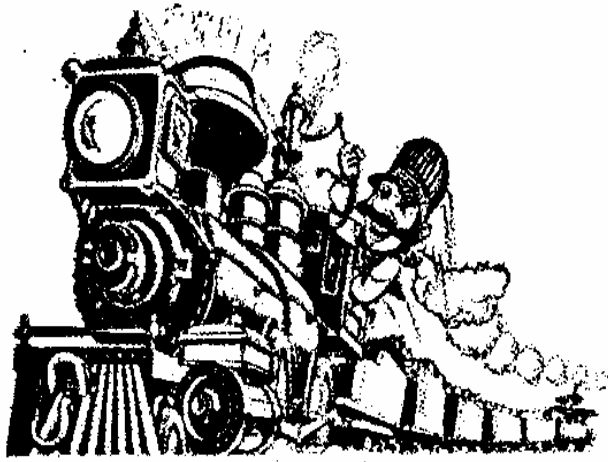
Turkey Creek 2006 Division Meet Registration Form

Advance Registration: \$4.00 ♦♦♦♦ Full Registration: \$5.00 (\$4.50 NMRA member) at door
 Children under 12 free with paid registrant
 Vendor tables: \$15.00 per table

		# Regs.	Total Cost
Name:		Advance Registration (\$4.00)	
Address:		Full Registration (\$5.00)	
City		Full Registration (\$4.50 - NMRA)	
State Zip		Vendor Tables (\$15.00)	
Telephone #:		Total Enclosed:	
E-Mail Address:		Scale Modeled	
More Registrant Names:			

Make Checks Payable to: "Turkey Creek Division"
 Mail to: Turkey Creek 2006, 1703 NE 181st St., Smithville, MO 64089





OZARK GARDEN RAILWAY SOCIETY

Pam DeGeere Tour Coordinator gtrains@sbcglobal.net 417-866-0505

Presents

THE 6TH ANNUAL SELF-GUIDED RAILROAD GARDEN TOUR
FRIDAY, SEPT. 22 & SATURDAY, SEPT. 23, 2006
9 A.M. TO 6 P.M. – RAIN OR SHINE

- SEE NEW LAYOUTS!
- The Tour is FREE
- FREE MAPS and Tour Books will be available early September

VISIT TOUR HEADQUARTERS – GARDEN RAILWAY SUPPLY DEPOT
2005-C East Kearney Springfield, MO 65803
888-873-7569 or 417-866-0505

SPECIAL STORE HOURS: 8 AM to 10 PM BOTH DAYS

We will have a raffle and model contest and lots of socializing with fellow garden railroaders! BE THERE!!!

SHARE THIS FLYER WITH FELLOW CLUB MEMBERS AND OTHERS INTERESTED IN HAVING A GREAT TIME SEEING FABULOUS TRAIN LAYOUTS.

Tom & Pam DeGeere

**GARDEN RAILWAY
SUPPLY DEPOT**

gtrains@sbcglobal.net

"Filling the needs of the garden railroader".

2005-C E. KEARNEY 417-866-0505

SPRINGFIELD, MO 65803 888-873-7569



The Extra Board

Union Pacific's famed 4-8-4 No. 844 is to visit Kansas City beginning around September 19, with the locomotive running from Cheyenne to Kansas City overnight. It will also visit Omaha in August. Trips to and from the display sites will not be open to the public, but the locomotive will be available for public viewing in both cities. Complete final schedules have yet to worked out. From the July 18, 2006 Trains Magazine newswire

KC Irish Fest to Feature Railroads and is an opportunity that's tailor made for an organization called the National Railway Historical Society. As most of us know, Irish-Americans have been an important part of railroad history. The KC Irish Festival recognizes that fact, and that's why Mike Haverty and Willis Kilpatrick asked our chapter to help out and Kansas City Southern is the major sponsor.

Union Station has already provided the festival organizers with lots of great display materials, including historical photos, text, and music. The S-scale club is even going to bring an operating layout. Now we're looking for *your* help in staffing the display.

Volunteers are needed. The idea is simply to be on hand to share our knowledge and love of rail history. When people see the displays about how the Irish helped build America's railroads...or about Irish-American folk heroes like Casey Jones and Kate Shelley...or about the history of Kansas City Southern, from Arthur Stilwell to the present day...they'll want to know more. We can help.

The festival is at Crown Center, and it runs from 5:00 pm to 11:00 pm on Friday, September 1 and from 11:00 am to 11:00 pm on Saturday and Sunday, September 2 and 3. We'd like to ask for a 3-hour commitment from our volunteers, but even if you can make it for just an hour or two, we'd be delighted to have you. *If you can help, please call Pete Hansen at 816-210-4109.*

The Water and the Horse - Our program in June involved Elmer and Norman Sandley, who were father and son on the Chicago & Northwestern and both of whom were in engine service.

Elmer could recall, with the alertness of the born storyteller, several wrecks and mixups. He felt that he could talk quite freely because the crews that were with him have gone to glory, the track has been torn up and the engines of blessed memory have long since been reduced to scrap. A couple of such stories included the following.

"We left Harvard on a little passenger train," he says, "hailed by what we call a Q-engine, a 4-6-0. My fireman was a nice efficient fellow who had fired for me on many previous occasions. We left Alden, just outside of Harvard, and he put his injector on. The next stop was Hebron, a distance of 9 or 10 miles. It was a cold day. His window was shut, and he and the brakeman were talking ballgames. I worked the little engine pretty hard, not realizing that the fireman's injector must have broken. When I whistled for Hebron I noticed that the water glass showed no signs of water. I made an emergency stop near

the depot, and told the brakeman to cut off the engine from the train. You never saw such lightning movements. Both fireman and brakeman scrambling out the gangway! When he got her cut, I opened the throttle and the engine leaped forward. I shoved my feet out the window, thinking if she did let go, I would be blown clear. I started and stopped the locomotive several times to wash the crown sheet. During the process, I put my injector on and ascertained no damage to the crown sheet.

"By that time the old conductor had got down on the track and the head brakeman shouted, 'She's gonna blow up! She's gonna blow up!' They got back of the train, and the last I saw of them both was the old conductor running down the track 'way ahead of the brakeman and fireman." Elmer Sandley stuck to the engineer's cab in the line of duty. The engine did not blow up and he lived to have many reminiscences.

On another occasion, he was firing a limited passenger train, No. 509, between Chicago and Elroy, the first lap to Minneapolis, for a big, bald-headed, good-natured Irishman, Tom Riley. He used to say, Elmer Sandley recalls, "He didn't shine with any attainments - just with the top of his head. We were passing through Reedsburg, Wisconsin, and things were going along very well when suddenly there was a commotion in the cab and Tom put her in the big hole. When I looked up, there was a horse's hoof tangled between the reverse lever and the backhead. Tom was a sight. About thirty-five feet of entrails were wrapped around his neck.

"When we'd stopped and made our investigation we found a horse and buggy had walked right into us on a grade crossing. A young gentleman was driving home from seeing his sweetheart and had fallen asleep with the reins in his hands. Our engine hit the horse and poor dobbin went up into the cab, or most of him, and Tom Riley got the most unpleasant part." .

However, no loss of human life was caused by this incident. From *The Sandley Story* by Norman Sandley.

NEW CARS ORDERED BY CTA - Bombardier Transportation announced on May 10 that it has been selected as the preferred bidder on a major order for rapid transit cars from the Chicago Transit Authority (CTA). The CTA Board selected Bombardier for a base order of 206 rapid transit vehicles, and exercised a first option for 200 additional vehicles, for a total of 406 cars. The total number of cars involved could increase to 706, should CTA exercise all available options. A contract is expected to be finalized in the next few weeks.

The new rapid transit cars will be the first in the CTA fleet to utilize alternating current (AC) propulsion, a technology that permits dynamic-braking regeneration, lower energy usage and maintenance costs, and improved reliability. Bombardier was the first railcar builder to supply AC propulsion technology to transit authorities in the United States and Canada. The new fleet of cars also will be equipped with a special leveling system to meet requirements of the Americans with Disabilities Act (ADA). The system ensures that



access to the car floor is level with the station platform during boarding.

The contract calls for delivery of ten prototype cars 30 months after official Notice to Proceed is given by the CTA. The prototypes will undergo nine months of revenue service testing before delivery of production series cars begins. The CTA operates the second largest public transportation system in the United States, covering the city of Chicago and 40 surrounding suburbs. CTA trains provide about 500,000 customer trips each day via seven routes, 222 miles of track and 144 stations.

Bombardier completed delivery of 1,030 rapid transit cars to New York City Transit in 2003, one of the largest passenger-railcar contracts ever undertaken in North America. That fleet has proven highly reliable with an average Mean Distance Between Failure performance well above NYCT's original 100,000-mile requirement.

The new CTA cars, which will be tested for up to one year, will have aisle-facing seating and increased aisle room, making it easier for people to lug baggage on trains and spread out inside the cars. While the number of seats (40) will not change, the new cars will have more amenities, including two wheelchair positions, seven security cameras, and electronic maps and destination signs, officials said.

One of the most notable changes will be the aisle-facing seat configuration, which has not been seen on the CTA since the 1960s. The configuration will make the aisles six inches wider at their narrowest point, allowing riders more space to board and making it easier for riders, especially those carrying something, to board the train.

Though some fret about the possibility of motion sickness because they won't be facing forward, a CTA spokesman noted the ride will be much smoother because the cars will run on a new alternating-current propulsion system. The order will enable the CTA eventually to replace some of its aging cars, a number of which are over 35 years old. By Virginia Groark in the *Chicago Tribune*

HAPPY BIRTHDAY! – (Editor's note: Make that *THREE* exclamation points!!!) With a blast of steam and the ring of a bell, the Cumbres & Toltec Scenic Railroad chugged into its 125th season on May 27. Though the historic train line was almost derailed in recent months by disputes over its funding and operation, it was full-steam ahead Saturday, as the train left its depot in Antonito, CO, on an eye-popping journey to Chama.

The train, which began in 1880 during the mining boom, has had a past based both in reality and fiction. It has plowed across thousands of movie screens in six feature films, thanks to the efforts of former Republican Gov. Dave Cargo to bring

Hollywood to New Mexico during his term from 1967 to 1970. Cargo boarded the train at its station in Antonito, where it would steam him and dozens of passengers to Osier, CO, an old mining town where they were scheduled to feast on meatloaf and mashed potatoes.

The locomotive then curves and climbs high up to the Cumbres Pass. At 10,015 feet, it's the highest rail summit in the West. Narrow tracks spanning just 3 feet allow the train to navigate the tight mountain curves along its 64-mile journey.

The route out of Chama is Cargo's favorite piece of eye candy. "It's just spectacular," he said. Cargo was instrumental in the railroad's purchase in 1970 by the states of New Mexico and Colorado. Today, he chairs the bi-state commission that oversees it.

The train line has seen some rough patches in recent months. Its previous management company pulled out in October, resulting in layoffs. The commission had to scramble to find the new operator - the Cumbres & Toltec Scenic Management Corp. -- in order to assure that the old 497 locomotive could fire up this summer.

Until recently, New Mexico was paying the bulk of the railroad's operating costs. In the last three years, the state pitched in about \$3 million, compared to less than \$800,000 from Colorado, which has struggled with budget deficits.

"I can't thank New Mexico enough for keeping this going," said Colorado state Sen. Lewis Entz, who this year helped shepherd \$1.3 million in capital funding through the state's Legislature. The added funds will help pay for more ties and ballast for the tracks, allowing trains to run faster and smoother, conductor Sam Ruybal said.

In the final moments before the "all aboard" call, Ruybal peeked beneath each car to check the brakes and strapped the gangplanks into place. He'll repeat the procedure many more times this season, with 12 train rides scheduled each week through Oct. 15.

Passengers are allowed to roam the train freely, even riding in an open car for a blast of fresh mountain air. But parents need to keep an eye on their junior conductors, he said.

You know how kids are, they think they're riding a toy," Ruybal said. Ruybal then hopped aboard, the fireman shoveled coal into the fire and the train pulled out of the depot.

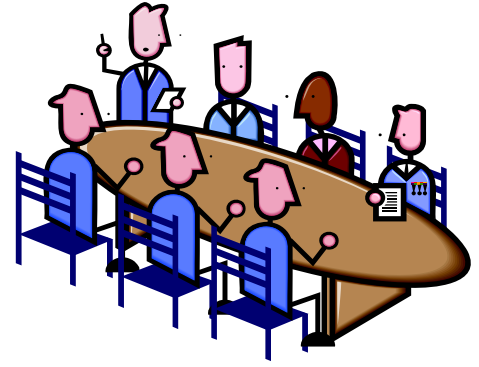
From the *Albuquerque Journal* by way of *The Fast Mail* from the 20th Century RR Club



THE LOCAL
Kansas City Chapter
**NATIONAL HISTORICAL
RAILWAY SOCIETY, INC.**



Minutes for Turkey Creek Meeting July 25, 2006



Paul Richardson, MMR brought the meeting to order in the Town Hall at Union Station. He asked if there were any visitors. There were five. Each one told a little about themselves.

He then turned the meeting over to Larry Alfred, MMR who talked about the Mid-Continent Region business meeting that will be held in conjunction with the Turkey Creek Meet in 2007. Place and date of the meeting will be announced at a later time.

Joe Robertson, MMR had Jim EuDaly one of the new MMR 372 come forward and receive his plaque and certificate for Associate Volunteer. He asked Steve Priest to come forward and presented him with four certificates: Structures, Scenery, Civil, and Electrical. Then he presented him with MMR plaque No. 377.

Pat Harriman, MMR presented Marty Vaughn MMR with an award from the NMRA Achievement Program (AP) Department Special Awards for the Best Performing Region Mid-Continent

Paul Myers talked about the up coming meet on August the 12 at the Lenexa Community Center. Most of the tables have been sold; the Heartland N Track group will set up their layout. Kerry Lindenbaum has 10 layouts for the tour; five in the afternoon and five for the evening tour. Louis Seibel has the door prizes well under way.

Steve Priest, the new Editor for the NMRA publishing the Scale Rails. Steve said that we could use some of the Articles that are on file for the Lightning Slinger.

September clinic will be done by Jim EuDaly.

Paul Richardson, MMR mentioned that the group should be looking for someone to replace him.

Louis Seibel talked about the Lightning Slinger. He asked if every one has been receiving the LS. There were a couple who had not received the LS and he gave out copies. Also Bob Jefferis would like it by mail. Ron Morris MMR stated that it looked great and everyone else agreed.

Then Paul Richardson MMR turned the meeting over to Ron Morris MMR who did a great clinic on the building of the Morse Timber Company Sawmill diorama. This was a real small company that his family owned in the 40's and 50's. The pictures that he showed for the original mill and sounding area were great.

Louis Seibel brought up that we might have a directory for the Division. The information would be Name, Address, Phone No., email address, NMRA No and Date Joined. A copy of it will be at the meet on August 12 to look at.

The following is a list of the visitors:

Debbie Lindenbaum, Cynthia and Joel Priest, Ruth EuDaly, David Strum, Scott Miros, Brad Howell, Kent Hurley, & Dick and Frances Wholf.

Paul Richardson MMR then adjourned the meeting

Respectfully, **Louis Seibel, Clerk**

Don't forget about the Turkey Creek Meet on August the 12



Gary's Switching List

The Switching List contains all known Mid-Continent Region, NMRA, train shows and Division meetings. It also lists all known club shows and swap meets in the Mid-Continent Region (IA, IL, MO, AR, NE, KS, OK). To list your event, send it to: email garyonho@cox.net, or Gary Hemmingway, 3201 SW Stone Ave., Topeka, KS 66614. To subscribe, or unsubscribe, to The Switching List send an email to the above link. Look for us on the MCoR web site: www.mcor-nmra.org.

KANSAS CENTRAL DIVISION meets the 1st Saturday of February, May, August, and November at various locations around the division area. BOD meetings are usually at noon and general meetings are at 1 p.m. The 2006 schedule is:
Aug 5, Tom Katafiasz, 2105 Northwood, Salina, KS 67401 785-827-8167 tommarykat@aol.com.
Nov 4, Robert Stewart, 249 Redbud Estates #249, Manhattan, KS 66502.

GATEWAY DIV. (ST. LOUIS, MO) meets 3rd Monday each month, 7:00 P.M. Odd numbered months: Trinity Lutheran Church, 14088 Clayton Road at Woods Mill Rd (Hwy 141), Ballwin, MO; Even numbered months: VFW Hall, O'Fallon, IL <http://www.gatewaynmra.org/division.htm>

WESTERN HERITAGE DIVISION (OMAHA, NE / COUNCIL BLUFFS, IA) Our meeting location is the Sump Library, 84th and Second Streets, Papillion, NE on the 2nd Saturday of each month from Noon to 3:00 pm. The meetings consist of a business meeting followed by a clinic, slide show, and sometimes a layout tour. During the months of June and December we do not meet at the library, they are reserved for the annual picnic (June meeting) and the annual holiday dinner (December meeting).

KATE SHELLEY DIVISION meets monthly on the fourth Thursday of each month 7:00 p.m. at the St. Paul Lutheran Church, 15th & Wilson, Ames, IA.

INDIAN NATIONS DIVISION meets at the New Hardesty Library at 8316 E. 93rd. St. (Just east of Memorial) in Tulsa, OK. The time is from 9am to noon. The dates of the remaining meetings are, November 18th. Each meeting we have various presentations from How-tos, to slide shows. After the meetings we have a layout tour on one of the members layouts. Contact Dave Salamon at drs_rr@yahoo.com for further information.

CLAREMORE & SOUTHERN RR OPERATING SESSION, 2nd Friday each month starting at 7:00PM and finishing by 10:00PM, 9372 E. Clover Creek Drive, Claremore, OK 74017-1487, Info: George F Maulsby, 918-341-9446 or www.csrailroad.com. Normal operating session has 34 trains running and extras as needed. Please send a confirming RSVP if you are planning to join us.

AUG 12, 2006 - TURKEY CREEK 2006 MEET, Lenexa Community Center, 13420 Oak, Lenexa, KS (just southeast of the railroad tracks at the intersection of Pflumm Rd. & Santa

Fe Dr., 8:30 – 2:00, Adm: Advanced \$4.00, At door \$5.00, (NMRA \$4.50), under 12 free w/pd adult, Tables: \$15.00 each, Clinics, Door Prizes, Model & Photo Contests, Youth Model & Photo Contests, Display Layouts, Home Layout Tours, Swap & Vendor Tables, Food. Mail registration to: Turkey Creek 2006, 1703 NE 181st Street, Smithville, MO 64089. Info: Paul Richardson, Registrar, 816-866-4043, or paul@purgatoryanddevilriver.com.

AUG 12 13, 2006 - BEATRICE AREA RAILROAD ENTHUSIASTS, Gage County 4-H Building, Gage County Fairgrounds in Beatrice, NE, setup time on Friday AUG 11th, Adm: \$5.00 for Adults and children under 12 are free. Information: John M. King, wtf048@yahoo.com and www.trainweb.org/barerr.

AUG 13, 2006 - MID- AMERICA TRAIN & TOY SHOW (formerly "Mid-America Train Meet"), BTC Exhibit Hall, I-435 and Front Street, Kansas City MO, 9am – 2pm, Adm: \$5 adults, 12 & under, free, 7am early bird adm, \$10 ea. Trains, models, RR collectibles, toys, train movies, door prizes, operating layouts. Free parking. Info: Steve & Sherri Stich, P.O. Box 369, Leavenworth, KS 66048 or 913-651-5864. Directions: From I-435, exit 57 west (Front St) to Universal Ave. and turn right at stoplight. Or, from I-35, exit Front St. and continue east to Universal Ave., then turn left at stoplight.

SEP 9, 2006 – BOEING EMPLOYEES' RAILROAD CLUB-ST. LOUIS RAILROAD SWAP MEET, Greensfelder Recreation Complex at Queeny Park, 550 Wiedman Rd., St. Louis, MO, 10 am to 3 pm, Adm: \$3, Under 12 free w/pd adult, Tables \$15, Seller setup 8 am – 10 am, Info: Wayne Schimmel, 733 Hwy Y, Winfield, MO 63389-2206 wwhteorse@aol.com or 636-668-6313 after 6 pm.

SEP 16, 2006 - SOUTHEAST OKLAHOMA CITY AREA MODEL RAILROAD MEET, Rose State College Student Center, 6420 SE 15th Street, Midwest City, OK; 9:00 AM to 4:00 PM, Sponsored by COMRail Model Railroad Club; www.comrail.org. Admission \$3.00 per person or \$6.00 per family. Swap Tables: Advance, \$12.00, at door \$15.00 includes admission. Contact: comrail@cox.net for more information.

SEP 23 – 24, 2006 - Weekend 'N' gineers Inc GREAT KANSAS CITY MODEL RAILROAD EXPO, Sprint Festival Plaza at Kansas City's Historic Union Station, Sat: 9:30am to 5pm Sun: 10 am to 5 pm; Admission: Adults \$6.00, 12 and under Free with paid adult. The expo will include train layouts in several scales, and vendors of model railroad equipment and other railroad relate items. Info: Charlie Post at 819-966-1534 or 800-826-6981 or Marc Jacobs at 816-237-1510 (evenings) or marcajacobs@sbcglobal.net or visit us on the web at WWW.GKCMRRE.COM

OCT 7-8, 2006 DECATUR TRAIN FAIR 2006, Decatur Civic Center, Decatur, Illinois, at the corner of Eldorado & Franklin Streets Sat: 10 am to 5 pm, Sun: 10 am to 4 pm - Sponsored by the Decatur Mt. Zion & Southern Model Railroad Club; Swap meet, Vendors, Clinics, Layouts and Door Prizes - Admission \$4, children 12 and under FREE with adult - For more information contact Steve Bricker at (217) 864-4397 or by e-mail bricker@insightbb.com





Steve Preist receives his MMR certificate from Joe Robertson

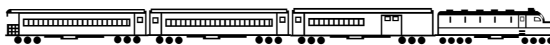
Photos by Marty Vaughn & Miles Hale



Jim EuDaly receives his MMR plaque from Joe Robertson

Pat Harriman, MMR presented Marty Vaughn MMR with an award from the NMRA Achievement Program (AP) Department Special Awards for the Best Performing Region Mid-Continent

Steve Preist receives his multiple AP certificates from Joe Robertson.

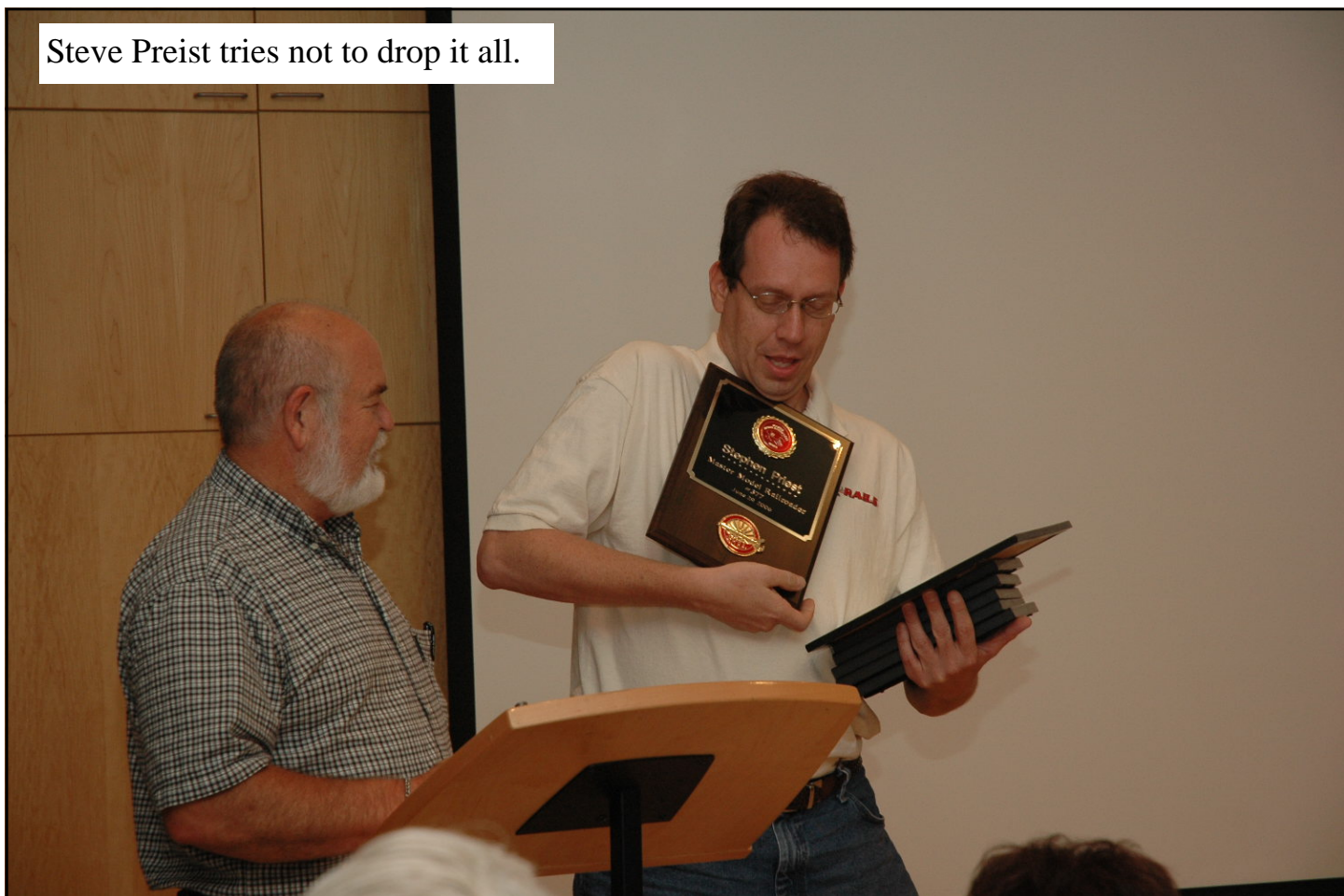


Steve Preist
receives his
MMR plaque
from Joe
Robertson

Keep Good
records and you
can receive
Some.



Steve Preist tries not to drop it all.



TURKEY CREEK DIVISION
4954 Marsh Avenue
Kansas City, MO 64129-2111



FIRST CLASS MAIL
ADDRESS SERVICE REQUESTED

mcor-nmra.org/divisions/turkeycreek/

TURKEY CREEK DIVISION MEETING

7:00 P. M. September 26, 2006

**6000 Larmar,
Mission, KS**

**Our own Turkey Creek Train Show and Meet
Saturday 12 at**

13420 Oak Street, Lenexa, KS

Volunteer and Help Paul Myers, Chair

Remember: Clinics, Contests, Layout Tours,

Door Prizes for free if your # is drawn

**Aug 13th, Nov 26th MID AMERICA TRAIN AND TOY SHOW,
BTE Exhibit Hall, I-435 and Front Street, Kansas City, MO
9 A. M. to 2 P. M.**

September 23 & 24th 10:am to 5:pm

SEP 23 – 24, 2006 - Weekend 'N' gineers Inc GREAT KANSAS CITY MODEL RAILROAD EXPO, Sprint Festival Plaza at Kansas City's Historic Union Station, Sat: 9:30am to 5pm Sun: 10 am to 5 pm; Admission: Adults \$6.00, 12 and under Free with paid adult. The expo will include train layouts in several scales, and vendors of model railroad equipment and other railroad relate items. Info: Charlie Post at 819-966-1534 or 800-826-6981 or Marc Jacobs at 816-237-1510 (evenings) or marcajacobs@sbcglobal.net or visit us on the web at WWW.GKCMRRE.COM

