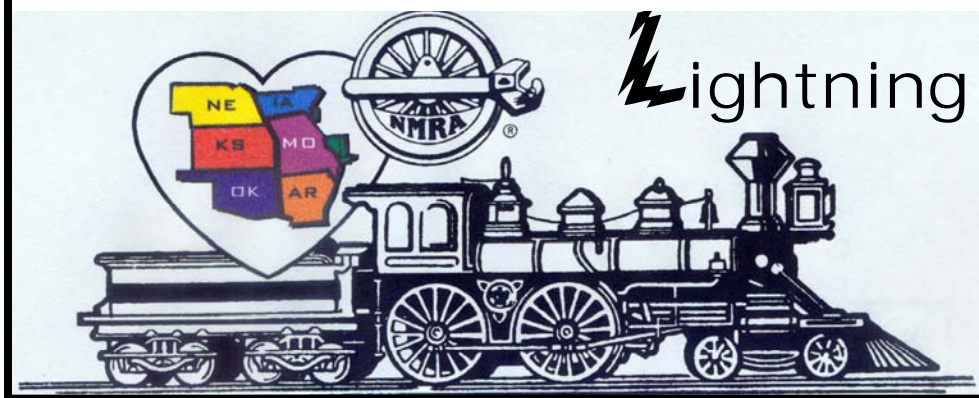


# Turkey Creek Division



## Lightning Slinger

VOL. 20 NO. 10

"For all gauges and all ages"

October 2007

MONTHLY PUBLICATION OF THE TURKEY CREEK DIVISION  
OF THE MID-CENTRAL REGION, NMRA

## October Train Show

Need help with Turkey Creek table  
At the Union Station in  
Kansas City, MO  
October 13 & 14 from  
10 am to 5 pm both days  
Contact Louis Seibel at 913-393-3495  
Or Email at l-seibel@comcast.net

## October Clinics

Modeling Switch Stands for Dummies  
By Paul Richardson MMR  
  
How Real Bridges are Designed  
By Bob McBean

Don't forget this year's  
"Take a Model Train to Work Day"  
is on Friday, November 16.  
Launched in 2001, this national day of action  
encourages you to share your love of  
model railroading with friends and co-workers.



## ***From THE SUPER'S DESK....***

Hello everyone!

We had a great meeting last Tuesday night, September 24<sup>th</sup>. Miles and Fran put on a great clinic on building structures and if you missed it you missed a great clinic.

We kept the business part of the meeting as short as possible and then turned it over to Miles and his wife Fran. During the business part of our meeting Charlie Stapleton received his MMR. It was MMR number 398. Charles Heying also completed his MMR requirements and became MMR number 399. Let me congratulate both gentlemen on their accomplishment. If you missed the meeting and did not get your chance to congratulate them, be sure to do so the next you meet.

Charlie Stapleton and Charles Heying brought along a large group of family and friends to observe the award presentation. It was good to see so many new faces.

We then moved to tables to begin the clinic. Those of us with our own kits were placed together and the remainder of the room received model kits for the clinic. The tables were already stocked with the tools and glue needed. Miles was outside with cans of paint to spray the models as they were brought to him for painting. It was a lot of fun and everyone enjoyed themselves. It had to be one of the best clinics we have had in a long time. It was good to get some hands on experience and just enjoy doing some modeling together.

Now is the time to discuss our first quarterly meeting of the officers which was held at my house this last Thursday, September 27<sup>th</sup>.

First order of business was to discuss our budget. We are currently losing money on the Lightening Slingers that we mail out. It cost us about \$17.50 to mail the newsletter, but we are only charging \$12 per issue. Since we are only mailing out 12 issues at this time there is no urgent need to raise rates. It will be considered in the future if the numbers of issues mailed increases. But, overall we are in the black. We made about \$1000.00 a year from interest and we also made over \$600 this year on the train show. So we have been slowly growing our assets. Next year we will have to relocate for three of our meetings. There will be elections in February, July, and October, so we will need to cover expenses of renting meeting rooms for those three months. This income also gives us some funds for possible use for clinic or tours. If you have ideas for industry tours, layout tours or special clinics for next year, please contact me. I will be glad to bring it before the board of officers for serious consideration.

Next, we need to know how many people are not

getting this newsletter either by mail or by e-mail and are still members of NMRA and interested. Louis thinks there might be as many as 60 people who fit the above description. So, if you know someone who is not getting the Lightning Slinger who needs it and wants it, please contact Louis Seibel.

We're now calling for candidates for the November elections and next years train show. If you are interested in serving the Turkey Creek division in some volunteer role and would like to earn points toward your AP volunteer certificate, please contact either Louis or me. Louis Seibel will be the head coordinator for the 2008 train show. He needs to fill the other coordinator positions which include layouts, clinics, registration, prizes, and advertising. Helping organize next year's train show will earn you points toward an AP certificate. It is very important to get an early start if we want to have another successful train show. The show will be held at the Lenexa Convention Center again next year. We looked at other possibilities but the Lenexa Convention Center was the best site even though they were not the lowest cost. We considered location, available space and cost. For the available space Lenexa was only a couple of hundred dollars higher and we have been there for a number of years now so everyone knows where it is and what to expect. Also, we felt it was closer to more of the layouts that would or might be available for next year's tour.

Well that covers the most important issues discussed at our first officers meeting. I will recap at our October 22<sup>nd</sup> meeting.

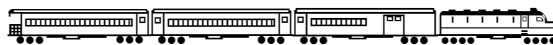
Also, before I forget, we will have two clinics at the business part of the October meeting. They will be the following:

- Modeling switch stands for dummies by Paul Richardson MMR
- How real bridges are designed by Bob McBean

I am now putting out the call for next year's clinics. I have the month of January booked already but I could use clinics for next year. The months we do not have the Lamar location are February, July and October. We have the train show in August and the Christmas party in December. We will need a travel log for the Christmas party but nothing for August because of the train show. So if you have a clinic for next year, let me know and I will add you to my list of clinics. Remember, if you have not got your AP for author, this is a great way to start earning it!

Until then happy railroading everyone!

*Kerry Lindenbaum,*



# Turkey Creek Minutes September 27, 2007

Meeting was brought to order by Kerry Lindenbaum, Superintendent.

He said that the business part of the meeting would be short because of the clinic.

He asked if there were any awards to be presented.

Marty Vaughn MMR said there were. He came forward and asked Charles Stapleton to come forward and be presented his AP Certificate for Master Builder Cars. Then Marty presented Charles with his Master Model Railroader Certificate and Plaque No 398. Next he asked Charles Heying to come forward Marty presented him his Certificate for Dispatcher. Then he presented him with his Master Model Railroader Certificate and Plaque No 399.

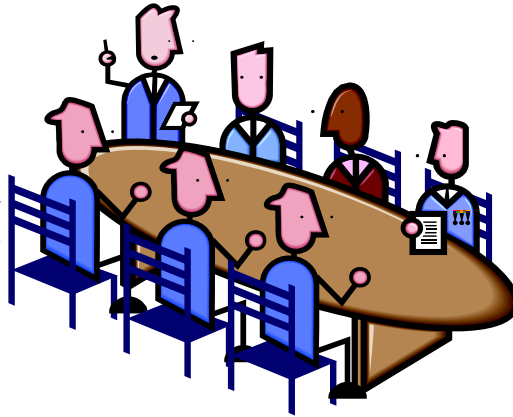
Then Kerry asked if there was any other business. Louis Seibel said that there is a Train show at Union Station on the 13th and 14th of October from 10 to 5 and that Turkey Creek has a table. He stated that we need volunteers to work in 3 to 4 hour shifts. Contact Louis at 913-393-3495 or Email [L-seibel@comcast.net](mailto:L-seibel@comcast.net).

Kerry also said there would be the first quarterly meeting of officers at his home on September 27 at 7pm,

Then Miles Hale MMR and his wife Fran conducted a clinic on how to build a Walthers 3 IN 1 kit. This is the first hands on clinic that we have had at a meeting. It was a great clinic. Even some of the visitors who had never made a model got to do one.

The meeting was adjourned at nine and every one was invited to have coffee and pie with the two new MMR's at the Village Inn.

Respectfully, Louis Seibel, Clerk



## OFFICERS

**Superintendent**  
Kerry Lindenbaum  
NMRA LM 5767  
913-648-8201

[kerryleonlindenbaum@kc.rr.com](mailto:kerryleonlindenbaum@kc.rr.com)

**Paymaster**  
Jack Boren  
913-962-2408  
[mccjbcmd@mindspring.com](mailto:mccjbcmd@mindspring.com)

**Clerk**  
Louis Seibel  
913-393-3495  
[l-seibel@comcast.net](mailto:l-seibel@comcast.net)

**Division Director**  
Paul Myers, MMR  
816-734-3719  
[paulwmyers@kc.rr.com](mailto:paulwmyers@kc.rr.com)

### Train Show Chairman's for 2007

Louis Seibel 913-393-3495  
[L-Seibel@comcast.net](mailto:L-Seibel@comcast.net)  
Brad Morneau 913-897-0699  
[bmorneau@kc.rr.com](mailto:bmorneau@kc.rr.com)

**Membership Chair Editor**  
Gary Hankins  
913-782-3645  
[marlysdee@aol.com](mailto:marlysdee@aol.com)

**L S Editor**  
Ted Tschirhart 816-861-3449  
[tedtschi@kc.rr.com](mailto:tedtschi@kc.rr.com)  
Louis Seibel  
Nancy Chapman

**AP Merit Awards and Achievement**  
Joe B. Robertson, MMR  
816-331-2773  
[piperval@aol.com](mailto:piperval@aol.com)

**Web Master**  
Paul Myers, MMR 816-734-3719  
[Paulwmyers@kc.rr.com](mailto:Paulwmyers@kc.rr.com)

**Web**  
<http://www.tc-nmra.org>  
TURKEY CREEK DIVISION  
IS A 501(C)(3) ORGANIZATION





Fran Hale and Miles Hale MMR  
talking at the clinic  
Making Walthers 3 in 1 Kit





# Master Model Railroaders

The Mid-Continent Region is proud of its members who have achieved the Master Model Railroader Award. The current members with this honor include:

MMR No.	Name	Division	MMR No.	Name	Division
MMR 26	Warren K. Weston MMR	Turkey Creek Division	MMR 216	Joe B. Robertson MMR	Turkey Creek Division
MMR 30	Paul Moon MMR	Little Rock Area	MMR 234	Rick C. Shoup MMR, HLM	(Living Outside of Region)
MMR 82	Ronald E. Williams MMR	Ozark Mountain Division	MMR 248	Al Warren MMR	Kate Shelley Division
MMR 90	W. Miles Hale MMR	Turkey Creek Division	MMR 250	Joe Mock MMR	Salt Valley Central Division
MMR 106	Douglas C. Taylor MMR	Turkey Creek Division	MMR 257	Stephen J. Titus MMR	Salt Valley Central Division
MMR 116	Charles R. Hitchcock MMR	Turkey Creek Division	MMR 265	Charles M. Buswell MMR	Salt Valley Central Division
MMR 119	Kenneth D. Ehlers II MMR	(Living Outside of Region)	MMR 273	Dean Windsor MMR	Turkey Creek Division
MMR 120	Peter B. Smith MMR	Gateway Division	MMR 277	Thomas J. Troughton MMR	South Central Missouri Area
MMR 128	Tim Kubat MMR	Ozark Mountain Division	MMR 278	R. Doug Farner MMR	Maple Leaf Division
MMR 129	Vernon Hart MMR	(Living Outside of Region)	MMR 288	Lloyd Larson MMR	Platte Valley Division
MMR 131	Walter B. Johnson MMR	Oklahoma SW Division	MMR 291	Brad Joseph MMR	Gateway Division
MMR 132	David Halpern MMR	Indian Nations Division	MMR 333	Larry R. Alfred MMR	Turkey Creek Division
MMR 137	Larry Keeler MMR	(Living Outside of Region)	MMR 335	John B. Lee MMR	Gateway Division
MMR 138	Rev. Robert L. Miller MMR	Turkey Creek Division	MMR 345	Paul Richardson MMR	Turkey Creek Division
MMR 159	Ronald D. Morse Sr. MMR	Turkey Creek Division	MMR 369	David A. Bartz MMR	Gateway Division
MMR 168	G. Patrick Harriman MMR	Turkey Creek Division	MMR 372	James F. EuDaly MMR	Turkey Creek Division
MMR 169	Walter Stansbury MMR	Ozark Mountain Division	MMR 373	Dave Roeder MMR	Gateway Division
MMR 173	Larry R. Long MMR	(Deceased)	MMR 377	Stephen M. Priest MMR	Turkey Creek Division
MMR 186	Charles L. Dischinger MMR	Ozark Mountain Division	MMR 378	Thomas E. Shook MMR	(Deceased)
MMR 187	Russell Treptow MMR	(Deceased)	MMR 380	Rick McClellan MMR	Turkey Creek Division
MMR 194	W. Marty Vaughn MMR	Turkey Creek Division	MMR 381	Paul W. Myers MMR	Turkey Creek Division
MMR 196	Richard E. Napper MMR	Kansas Central Division	MMR 383	Earl Mullins MMR	Platte Valley Division
MMR 197	Fred Carlson MMR	(Living Outside of Region)	MMR 386	Peter T. Bellos MMR	Turkey Creek Division
MMR 208	Patrick G. Lana MMR	(Living Outside of Region)	MMR 390	Randolph P. Meyer MMR	Gateway Division
MMR 209	Jan E. Jester MMR	(Deceased)	MMR 395	John O'Neill MMR	Platte Valley Division
MMR 211	Richard Yungclas MMR	(Living Outside of Region)	MMR 398	Charles Stapleton MMR	Turkey Creek Division
			MMR 399	Charles R. Heying MMR	Turkey Creek Division





Back Charles Stapleton MMR, Miles Hale MMR, Paul Richardson MMR, Marty Vaughn MMR, and Paul Myers MMR,  
Front Pat Harriman MMR, Joe Robertson MMR, Charles R. Heying MMR



# THE SWITCHING LIST

The Switching List contains all known Mid-Continent Region, NMRA, train shows and Division meetings. It also lists all known club shows and swap meets in the Mid-Continent Region (IA, IL, MO, AR, NE, KS, OK). To list your event, send it to: [garyonho@cox.net](mailto:garyonho@cox.net), or Gary Hemmingway, 3201 SW Stone Ave., Topeka, KS 66614. To subscribe, or unsubscribe, to The Switching List send an email to the above link. Look for us on the MCoR web site: [www.mcor-nmra.org](http://www.mcor-nmra.org).

**KANSAS CENTRAL DIVISION** meets the 1<sup>st</sup> Saturday of even numbered months at various locations around the division area. This is a new schedule for 2007. BOD meetings are usually at noon and general meetings are at 1 p.m. For the full schedule check the MCoR website or email Gary Hemmingway: [garyonho@cox.net](mailto:garyonho@cox.net). The next meeting is:

October 6, 2007: **Robert Stewart**: 249 Redbud Estates, Manhattan, KS: To get to Robert's home get on HWY 113 on the west side of Manhattan, KS. Turn East on Farm Bureau Road, turn North (left) at the mobile home park office building. After the road turns east (right) continue across the intersection to Robert's mobile home, #249 on the North side of the street. Please do not block entrances to other mobile homes. All are invited regardless of NMRA membership.

**GATEWAY DIV. (ST. LOUIS, MO)** meets 3rd Monday each month, 7:00 P.M. Odd numbered months: Trinity Lutheran Church, 14088 Clayton Road at Woods Mill Rd (Hwy 141), Ballwin, MO; Even numbered months: VFW Hall, O'Fallon, IL <http://www.gatewaynmra.org/division.htm>

**TURKEY CREEK DIV. (KANSAS CITY, MO & KS)** monthly meetings 4th Tuesday, 7:00 P.M. Johnson County Offices, NE Branch, 6000 Lamar, Shawnee Mission, KS (DMV Building on SW corner of Lamar and Mastway)

**WESTERN HERITAGE DIVISION (OMAHA, NE / COUNCIL BLUFFS, IA)** meets second Saturday (except June and December) at noon. Sump Memorial Library, corner of Washington and Second Streets in Papillion (across from Runza). Visit [www.whdnmra.org](http://www.whdnmra.org) for more info and a map.

## **EASTERN IOWA DIVISION**

Cedar Rapids, Iowa: Eastern Iowa Division Meeting Saturday, October 6, 2007 from 9:00 AM to 5:00 PM. The meeting will be held at the EOC/Training Room of the Linn County Emergency Management Agency on the Kirkwood Community College Campus (next to the tennis courts on the north side of the campus). Kirkwood Community College is located at 6301 Kirkwood Blvd. SW, Cedar Rapids, IA. The agenda for the day will include a short business meeting, a silent auction, two clinics from Eastern Iowa Division area members, and two model railroad open house tours after the meeting. Model judging for merit and AP will also be available. For additional information contact the Eastern Iowa Division Superintendent, Rich

Mahaney at: 505-640-5909 or email: [hazmatrichm@aol.com](mailto:hazmatrichm@aol.com)

**KATE SHELLEY DIVISION** meets monthly on the fourth Thursday of each month 7:00 p.m. at the St. Paul Lutheran Church, 15<sup>th</sup> & Wilson, Ames, IA.

**INDIAN NATIONS DIVISION** meets at the New Hardesty Library at 8316 E. 93rd. St. (Just east of Memorial) in Tulsa, OK. The time is from 9:30am to 12:30pm. The dates and themes for each meeting in 2007 are: Jan 20 - What did Santa Bring? March 31 - Locomotives, May 19 - Rolling Stock, Sept. 15 - Photography, Nov. 17 - Structures/Dioramas. Each meeting we have various presentations from clinics, to slide shows. After the meetings we have a layout tour at one of the members layouts. Contact Dave Salamon at [drs\\_rr@yahoo.com](mailto:drs_rr@yahoo.com) for further information.

**PLATTE VALLEY DIV. (HASTINGS, GRAND ISLAND, KEARNEY, NE)** meets 2<sup>nd</sup> Tuesday of each month at 7:00 p.m. in members homes on a rotating basis. Info: John O'Neill, Div. Dir., 308-384-5011 or [jponeill@computerconcepts.com](mailto:jponeill@computerconcepts.com). Next meeting at John's house: 4112 W. Faidley Dr., Grand Island, NE 68803. Two clinics by Jim Wells: "Coal and Coal Mines" & "HO Scale Coal Loads"

**CLAREMORE & SOUTHERN RR OPERATING SESSION**, 2<sup>nd</sup> Friday each month starting at 7:00PM and finishing by 10:00PM, 9372 E. Clover Creek Drive, Claremore, OK 74017-1487, Info: George F Maulsby, 918-341-9446 or [www.csrailroad.com](http://www.csrailroad.com). Please RSVP approx. a week before each scheduled operations session. Thanks. George F Maulsby, Claremore & Southern RR [www.csrailroad.com](http://www.csrailroad.com) 918-341-9446

**WICHITA TOY TRAIN CLUB TRAIN MANIA**, each Saturday 12-5 P.M. below Blockbuster at Twin Lakes Shopping Center, 21<sup>st</sup> & Amidon, Wichita, KS 316-838-5103 or [www.members.cox.net/wttc](http://www.members.cox.net/wttc)

## **TRAIN SHOWS & MEETS**

**OCT 6-7, 2007 – 15<sup>TH</sup> ANNUAL NORTH EAST KANSAS RAILROADERS TRAIN SHOW**, Memorial Hall, 819 Commercial, Atchison, KS, Sat: 10 am – 5 pm, Sun: 10 am – 4 pm, Adm: \$3.00 under 10 free w/pd adult, Operating Layouts, Dealers Welcome, Info: 912-367-6273.

**OCT 13-14, 2007, MISSISSIPPI VALLEY N SCALERS 17<sup>TH</sup> ANNUAL GREATER ST. LOUIS METRO AREA TRAIN SHOW**, Kirkwood Community Center, 111 S. Geyer Ave., Kirkwood, MO, Sat: 10 a.m. – 5 p.m., Sun: 11 a.m. – 4 p. m.; Adm: \$5.00 12 & under free w/pd adult, take I-44 to Lindbergh N or I-40 to Lindbergh S, turn west on W. Adams Ave., go 4 blocks to S. Geyer, look for the signs; Info: on web site: <http://mvns.railfan.net>





Check out there regional on line news letter. Also check out this link for what the Piedmont Division does in Oct and Nov to promotu model railroading <http://www.piedmont-div.org/pilgrimage/>

Louis Seibel  
Advertising Manager  
Caboose Kibitzer  
Mid-Continent Region  
Clerk  
Turkey Creek Division  
1069 N Logan  
Olathe, Ks 660616321  
Home: 913-393-3495  
Cell After 6PM: 913-927-6850  
-----Original Message-----

From: [general-owner@lists.nmra.org](mailto:general-owner@lists.nmra.org) [mailto:general-owner@lists.nmra.org]

On Behalf Of Paul V. Voelker

Sent: Monday, October 01, 2007 7:18 PM

To: general

Subject: [nmra-general] Summer issue of The SouthErneR is online

The 2007 Summer Issue of the E-SouthErneR is now on-line at the SER

Website at: <http://www.ser-nmra.org/sou.htm>

Some coverage of the Detroit contests is in this issue but more will be in the Fall issue when it comes out. There are photos of the model of the SP Train Ferry Solano that was in the contest room. There are also photos of the Detroit Convention's Trainshow. The Fall issue will follow in a couple of weeks (I hope). Also for those interested in visiting train layouts in Georgia, you may want

**OCT 13-14, 2007—GREATER KANSAS CITY 6<sup>TH</sup> ANNUAL MODEL RAILROAD EXPO**, Union Station, Kansas City, MO, Sat: 10 a.m. – 5 p.m., Sun: 10 a.m. – 5 p.m., Adm: \$7.00, 12 & under free w/pd adult, free parking, Info: [www.gkcmrre.com](http://www.gkcmrre.com) or Marc Jacobs: [gkcmrre@sbcglobal.net](mailto:gkcmrre@sbcglobal.net) or 913-782-5888; Charlie Post: [Charlie@showmelines.com](mailto:Charlie@showmelines.com) or 816-966-1534, 1-800-826-6961

**OCT 28, 2007-WTTC SWAP MEET**, 4-H Bldg., 21<sup>st</sup> & Ridge, Wichita, KS, Info: Bill Laughlin, [www.members.cox.net/wttc](http://www.members.cox.net/wttc) or 316-838-5103.

**NOV 3, 2007, KATE SHELLEY DIV, MCoR, NMRA, 16<sup>TH</sup> ANNUAL FALL MEET**, United Community School, US Highway 30, between Ames & Boone, IA; 9 am – 3 pm, Adm: \$5.00 at door, Pre-registration \$4.00, clinics, silent auction, dealers, displays, layouts, door prizes, contest categories: diesel locomotives, coal hoppers, freight cars prior to 1960, box cars 50' or more, online structures, train-8 pieces; photo contest: structures, color/black & white, prototype & model; Info: Bob Folkmann 515-232-8689, Carl Chumos 515-233-8256.

From the Tacoma News Tribune this morning: State rail officials hope to have all five Talgo trains back in service between Vancouver, B.C., and Eugene, Ore., by mid-November > if they get federal approval soon to go ahead with repairs.

The trains were taken out of service in early August after cracks were discovered in the suspension of half of the 67 cars on the Amtrak route. Substitute trains were brought in a few days later, but they have no baggage cars so passengers are limited to two carry-on pieces of luggage. Moreover, the substitute trains can't travel as fast so the schedule has been altered.

Tonia Buell, spokeswoman for the rail office of the Washington Department of Transportation, said Monday that permission from the Federal Railroad Administration is imminent. "We expect to have all of them back on the tracks for the busy Thanksgiving season," she said. "We are just waiting for an official letter of approval from the FRA to put them back in service." The federal agency oversees safety on Amtrak lines.

Buell said Talgo, the Spanish company that manufactured the train sets, will make the repairs, which are still covered by warranty. The fatigue cracks are a result of welding during manufacturing, she said.

Each train will take about one week to repair and will be returned to service as it is ready, she said.

There are five Talgo trains in service between Seattle and Portland.Washington bought three of them. Amtrak owns the other two.





Charlie Stapleton MMR 398

Charlie completed his first AP certificates for Civil and Electrical Engineering In February 1993. In December 1994 he earned his Chief Dispatcher award, Volunteer in May 1995 and Author in November 1996. Eight years later in May 2004 Charlie completed his scenery certificate and in August 2007 he completed his last required AP certificate, Cars, and earned his MMR.



Charles Stapleton MMR with his graduation UP hat



The two new Master Model Railroaders

Charles Stapleton receiving his Master Model Railroad No 398 Certificate and Plaque from Marty Vaughn MMR





## Chuck Heying MMR 399

Chuck started in the AP program earning his Gold Spike in October 1996. In 1999 Chuck earned his Volunteer AP certificate. In 2006 Chuck got fired up (and nudged by Paul Myers and Paul Richardson) and completed his Electrical and Structure AP requirements in November 2006 and his Scenery AP requirements in December 2006. In 2007 Chuck earned his Cars and Civil AP certificates in June and his Dispatcher and MMR requirements in August.

Charles Heying receiving his AP Certificates for Master Builder Cars and Model RR Engineer Civil



Charles R. "Chuck" Heying MMR 399

Like almost everyone else I started my rail experience with "O" gauge. I would buy old broken equipment, repair, and paint them and trade them for better equipment.

I am married to a wonderful wife, Nadine, have six children, eleven grandchildren and two great grandchildren. My degrees are in economics and business. Heart by-pass surgery a little over two years ago about ended my model building days. My hands shook to the point that I could not even write my name. Along came three of my dear friends that would not take no for an answer. They set me down along with two other friends and we built models, switches and everything else that we needed.

My Master Model RR Builder Certificates are in:

1. Associations Volunteer
2. Master Builder Structures
3. Master Builder Scenery
4. Model RR engine Electrical
5. Master Builder Cars
6. Model RR Engineer Civil  
Chief Dispatcher

I consider this honor right up there with my Eagle Scout badge as a great moment in my life.

I solemnly promise that I will try to help others as these three friends have helped me.

Charles R. Heying, MMR #399

Charles Heying receiving his Master Model Railroad No 399 Certificate and Plaque from Marty Vaughn MMR



Here's my entry for next year's Modeling Challenge. It is 'HO' Scale. While I was at it I made it into our next **Morse Productions paper kit #H9106 the "General Store."** However, if someone wants a custom name I can do that for a small up charge. It took eight hours of computer work to create the building in PhotoShop and Microsoft Publisher using parts of photos from about 10 different old buildings. It took almost exactly the same amount of time to build it. Then I spent over four hours on the scenery base. I don't know that it will sell, but I had the itch to do some "photo modeling."

Ron Morse, MMR  
Morse Productions

**MORSE PRODUCTIONS**  
8554 HALL DRIVE - LEBANON, KS 66210  
913-894-6472  
rdmorse1@juno.com  
Ron Morse, MMR

Copyright © 09/01/2007 - Ron Morse, MMR

**GENERAL STORE**  
PAPER KIT #H9106 - HO SCALE

Glue the sections outlined in RED (NOT the extra pieces of corrugated metal and cardboard) to the frame, with the corrugated metal on the outside. Use white or yellow spray paint on the corrugated metal and over the corrugated metal on the inside. Use white or yellow spray paint on the corrugated metal on the inside. Use white or yellow spray paint on the corrugated metal on the inside. Use white or yellow spray paint on the corrugated metal on the inside.

**STORE ROOF**  
For a more weathered look leave some of the corrugated metal off and let the wood show.

**FRONT BOARD WALK** (glue to 2 or 3 pieces of cardboard)

**PRIVY**





Train Town in Kansas City is sponsoring our 6th annual model railroad exposition at Union Station in Kansas City, MO

**13 & 14 October 2007**

The expo will include train layouts in several scales, along with vendors of model railroad equipment. Historical societies and dealers in Railroadmania and books will be there, along with a special play area for younger railroaders.

Union Station is [conveniently located](#) in the heart of [Kansas City](#), just southwest of the intersection of I-70 and US-71. Access from the highways is easy and there is ample **Free Parking, with a paid admission**. Parking Stubs will be validated if your stay is over 3 hours at the ticketing booth. Many hotels are located within 10 minutes of the station, offering a full range of accommodations. The exhibition hall offers a secure, pleasant environment for vendors, exhibitors and attendees.

Show hours are

**10:00 - 17:00 Sat, 10:00 - 17:00 Sun**

Adult admission:

**\$7.00**

Children 12 and under admitted free with a paid adult.

For additional show information:

call Marc Jacobs, 913-782-5888, <mailto:gkcmrre@sbcglobal.net> or  
Charlie Post, 816-966-1534 or 800-826-6961, <mailto:charlie@showmelines.com>



## Minutes from the First Quarterly Meeting of Officers of Turkey Creek

The meeting was held at Kerry Lindenbaum's home on September 27 at 7pm. Members present were Kerry Lindenbaum Superintendent, Jack Boren Paymaster, Louis Seibel Clerk, Paul Myers MMR Division Director and Web Master, Gary Hankins Membership Chairman, and Joe Robertson MMR AP Merit Awards and Achievement.

Things discussed were: Next year's train show, budget, meeting space because of elections next year, membership and email address, election of officers, cost of the Lightning Slinger, and special field trips.

The train show will be either the first or second weekend in August.

### Budget:

- We made money last year because of the train show and interest.
- Outside expenses for three 2008 meetings because of the county elections at our regular meeting place. Feeling was that the group did not want to go back to space that we had last year.
- The Lightning Slinger is costing about \$17 per yearly mailing. We are mailing out seven copies each month.

We need help with membership renews and with email addresses for old members. There are about 60 plus members that are not getting any information on meetings or shows.

The election of officers was discussed and members of the board all said that they would run again except Paul Myers MMR whose term is up. Brad Morneau has expressed an interest in that position.

Special trips were discussed such as Saturday layout tours or manufacturer tours.

Meeting was adjourned.

Respectfully Louis Seibel, Clerk

## *Ozark Model Railroad Association Presents*

### *29th Annual Train Show & Swap Meet*

*Saturday, November 17, 2007*

*9 am – 3 pm*

*King's Way United Methodist Church*

*2401 S. Lone Pine  
Springfield, MO.*

*Railroad Memorabilia*

*HO, N, O, Lionel & G Scale*

*Lots of Model Trains for sale!  
and Layouts*

*Free parking with easy access to show*

*Admission: \$5.00 Adults*

*Children 7-12, \$3.00*

*7 & Under FREE*

*For more information on show contact:*

*AL Freeman-417-443-1014-[dragonden51@yahoo.com](mailto:dragonden51@yahoo.com)*

*Dale Irvine - [bowlanmrr@mchsi.com](mailto:bowlanmrr@mchsi.com)*

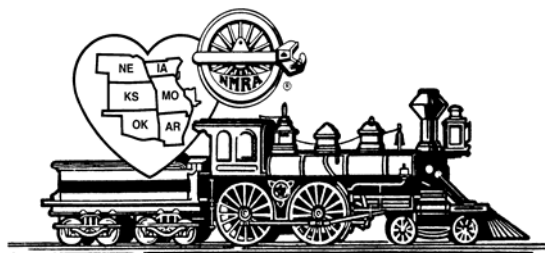
*For Vendor information contact:*

*Gary Mills - 417-725-1433 - [GMOzarkTrains@aol.com](mailto:GMOzarkTrains@aol.com)*

*Larry Smith - 417-865-6250 - [Lsmith7364@aol.com](mailto:Lsmith7364@aol.com)*

*Check out our website: [omra.homestead.com](http://omra.homestead.com)*





**Mid-Continent Regional Convention/ *BRANSON EXPRESS 2008***

Hosted by the Ozark Mountain Area

**MAY 15-18, 2008 IN BRANSON, MO**

**STONE CASTLE (formerly Settle Inn)**

3050 Green Mountain Dr. 800-677-6906 group # NMRA-5158 rate \$69.98 + tax

**Activities planned for this year's meet include:**

**Door Prizes and Silent Auction** - for all registrants.

**Display Layout and Layout Tours** – In addition to the display layout at the meet, several local modelers will be opening their homes to layout tours Friday afternoon and evening. Layout tour maps will be available at registration.

**Excursion train trip** – On the Branson Scenic Railway. Information will be available at registration.

**Model & Photo Contests** – by NMRA judging and Poplar vote.

**Clinics** – a full slate of clinics covering many aspects of the hobby. For Clinic registration contact Tom McMorran at k\_t\_mack@yahoo.com or 417-239-2776.

**Swap Tables and Railroad Groups** – Approximately 75 tables for area dealers, local hobbyists and other railroad groups. For information on tables contact Tom McMorran at k\_t\_mack@yahoo.com or 417-239-2776.

**BRANSON, MO** – Live entertainment capitol of the U.S.A., with over 52 show venues. Plus Silver Dollar City, Celebration City, Branson Belle and three lakes for boating and fishing. There is something for every member of the family to do in Branson, so make the trip to the convention a family vacation.

For information log onto explorebranson.com or call 800-214-3661.

**Mid Continent Regional Convention / *Branson Express 2008* Registration Form**

Advance Registration (until October 31,2007) is: \$55.00 for the convention & banquet  
 Full Registration (after October) is \$45.00 for the convention and/or \$25.00 for the banquet  
 Swap tables @ \$20.00, plus \$15.00 Branson City Vendor License fee (March 31,2008)

	Number of attendees / tables	x	Cost	=	total
Advance Registration (before 10/31/07)			\$55.00		
Convention Registration			\$45.00		
Banquet			\$25.00		
Swap Tables (maximum of five)			\$20.00		
Branson Vendors License	1		\$15.00		
			Total Enclosed:		

Name \_\_\_\_\_ e-mail \_\_\_\_\_

Address \_\_\_\_\_ phone \_\_\_\_\_

City \_\_\_\_\_ State \_\_\_\_\_ Zip code \_\_\_\_\_ - \_\_\_\_\_

Additional attendees \_\_\_\_\_

Make Checks Payable to: "Branson Express 2008"  
 Mail to: Tom McMorran, 730 Emerald Pointe Dr #433, Hollister, MO 65672



**TURKEY CREEK DIVISION**  
**4954 Marsh Avenue**  
**Kansas City, MO 64129-2111**



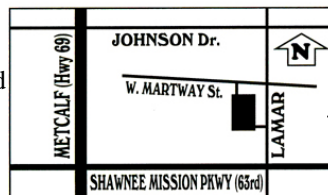
**FIRST CLASS MAIL**  
**ADDRESS SERVICE REQUESTED 4955**

[mcor-nmra.org/divisions/turkeycreek/](http://mcor-nmra.org/divisions/turkeycreek/)

## **TURKEY CREEK DIVISION MEETING**

**7:00 P. M. October 23, 2007**  
**Johnson Country Offices**

**October 23**  
**November 27**  
**December 18 the Third Tuesday**  
**2008**  
January 22  
February 26 - meeting place to be announced  
March 25  
April 22  
May 27  
June 24  
July 22 - meeting place to be announced  
August No Meeting  
August Train Show 9 or 16 Saturday  
September 23  
October 28 - meeting place to be announced  
November 25  
December 16, Third Tuesday of the Month Holiday Party  
All meetings start at 7PM  
Northeast Johnson County Offices 6000 Lamar, Mission, Kansas



We meet at the NE Johnson County Office, located at 6000 Lamar, Shawnee Mission, KS (the southwest corner of West Martway and Lamar).

