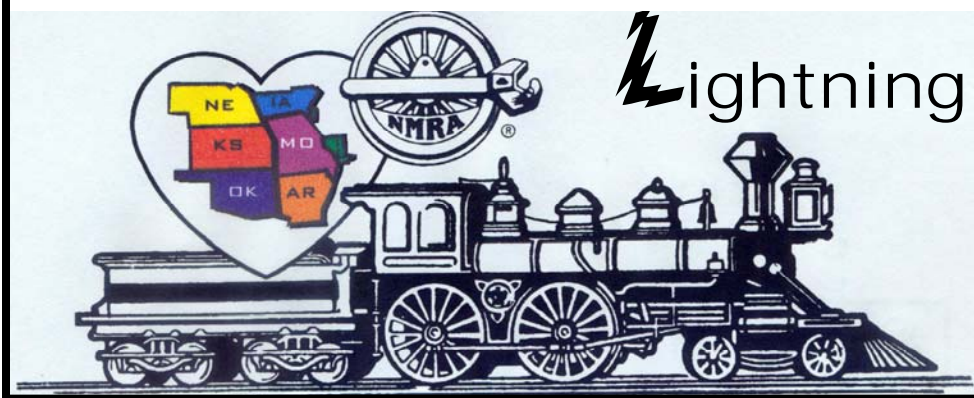


Turkey Creek Division



Lightning Slinger

VOL. 20 NO. 11

"For all gauges and all ages"

November 2007

MONTHLY PUBLICATION OF THE TURKEY CREEK DIVISION
OF THE MID-CONTINENT REGION, NMRA

The two Clinics for November

The History of Railroading in Kansas City
by Dennis Owens

The American Street Car
by Bob Jefferis

Don't forget this year's
"Take a Model Train to Work Day"
is on **Friday, November 16.**

Launched in 2001, this national day of action
encourages you to share your love of
model railroading with friends and co-workers.



From THE SUPER'S DESK....

Hello everyone!

Well I finally have to say that we had a meeting that was not great and I feel responsible. We had Paul Richardson consent to do a clinic on switch stands which no one could see because I did not get the equipment he needed for his clinic. I made a mistake and I want to apologize to all members in attendance. I am going to make sure that all the equipment needs for all future clinics is available for future clinics so all future clinics can be seen and enjoyed by everyone attending. I intend to contact all the upcoming clinicians to make sure we have the equipment available for the remainder of this year's clinics. We had a smaller group than normal and the numbers dropped after the first clinic. We did have some new faces join us and I hope they will continue to attend our meetings in the future!

During the business part of our meeting we discussed our budget. Jack said that we have over 1300 dollars in the bank and no expenses. We discussed room rental which our new Regional President opposes. We discussed some alternative room arrangements. I will make sure that this item gets added to the agenda for our next meeting of the officers. If you have an opinion on room rental or others topics pertaining to the budget of the Turkey Creek Division please feel free to contact me by e-mail or phone.

We asked for volunteers to serve as committee chairs for the upcoming train show in August. We got volunteers for Layout and Registration. Louis may have filled the other posts, but if you would like to volunteer for one of these chairmanships, please contact Louis. This is a great way to begin earning your association volunteer certificate.

We also asked for volunteers for the upcoming elections of officers of Turkey Creek. No one stepped forward at the meeting to volunteer for any of the positions. So as it now stands the following people will be nominated and elected, if previous years are any guide to what to expect.

1. Kerry Lindenbaum – returned to office as Superintendent
2. Jack Boren – returned to office as Pay Master
3. Louis Seibel – returned to Office as Clerk
4. Brad Morneau – wants to fill the Division Director spot being vacated by Paul Meyers

Next, we need to know how many people are not getting this newsletter either by mail or by e-mail and are still members of NMRA and interested. Louis thinks there might be as many as 60 people who fit the above description. So, if you know someone who is not getting the Lightning Slinger who needs it and wants it, please contact Louis Seibel.

We will have two clinics after completing the division business and the elections of officers. They will be the following:

- The History of Railroading in Kansas City by Dennis Owens
- The American Street Car by Bob Jefferis

I am now putting out the call for next year's clinics. I have the month of January booked already but I could use clinics for next year. We have the train show in August and the Christmas party in December. We have the Clinic by Ron Morse called "If these walls could talk" for the 2008 Christmas party. We have moved the modeling contest back to May from June in 2008 so be thinking about what you want to build for the contest. All entries are welcome. The only requirement is that it must be able to fit through the door one way or another and be related to railroading. You can bring structures, railroad scenes, engines, or cars.

Do not forget to volunteer to do a clinic. Just let me know what the title of the clinic is and what equipment you need such as projectors so we can have everything ready for you.

Until then happy railroading everyone!

Kerry Lindenbaum,



Turkey Creek Minutes October 23, 2007

The meeting was brought to order by Kerry Lindenbaum Superintendent.

He asked if there were any first time visitors. There were two: Bob Hollowell from Blue Springs who has rerailed and models in HO, and Paul Grayless who has moved from the Southern California area and was a member of the Los Angeles Division there and now lives in Olathe model in HO.

Kerry then recapped the September meeting. Highlights were two new MMRS Charles Heying and Charles Stapleton and a great clinic put on by Fran and Miles Hale on Building a 3-in-1 Wathers kit.

Kerry then asked if there were any awards. Joe Robertson MMR said that there were none.

Kerry asked Jack Boren for a Treasurer's report. He said we had about \$3,500 in the checking account and there was not much activity in the account, and there have been less than 10 checks written in the year.

Kerry then asked Louis Seibel to report on the 2008 show which he will head again this year. He said that the show will be held on August 2 at the Lenexa Community Center. He said the positions open on the committee are: Registration, Door Prizes, PR, Layout and Layout Tours. He asked if any of the members present would like to do any of them. Bob Hollowell said that he would do Registration. Louis called Brad Moreau. Brad said he would do the Layout Tour. Louis said the first meeting would be at his home on November the 8th at 7pm.

Louis then mentioned there are two train shows in the Kansas City area next year. One on January 12 & 13 at the Governor's Hall at the Kemper Arena complex, and the other at the Worlds Greatest Hobby on Tour on March 15 & 16 at the Kansas City Convention Center. He said we need Volunteers to help with the booth. Jack Boren said that he would help on both Saturdays.

Louis reminded every one that the preregistration for the MCR region meet was coming due at the end of the month. It's \$55 which includes registration and dinner on Saturday Night.

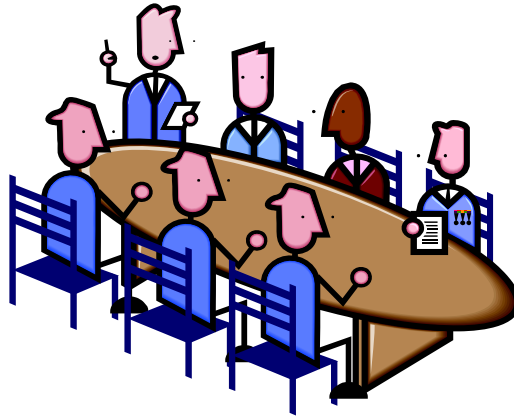
Kerry talked about next year's meetings. He said we would need to move three times because of the elections. Louis mentioned that Bob Jefferis said that we could use his church at Knox and 95 St. for no charge, but a donation would be nice of \$25. There was some discussion about other places that would be at no charge. One was Union Station; Miles Hale MMR has a room to put together layouts, but we would have to bring chairs. Larry Alfred MMR said we should check in to the Libraries for space and we should contact them 6 to 8 weeks in advance.

Kerry said the clinics were next, and we would take a break between them.

The first clinic was Modeling Switch Stands for Dummies by Paul Richardson MMR. It was great and there was a nice handout. A copy of the handout will be in this issue.

The second clinic was "How Real Bridges are Designed" by Bob McBean PE, who is a Structural Engineer and has taught at MU and worked on different projects throughout the US. He had an eight page handout that will be on the website this month

Respectfully, Louis Seibel, Clerk



OFFICERS

Superintendent
Kerry Lindenbaum
NMRA LM 5767
913-648-8201

kerryleonlindenbaum@kc.rr.com

Paymaster
Jack Boren
913-962-2408
mccjbcmd@mindspring.com

Clerk
Louis Seibel
913-393-3495
l-seibel@comcast.net

Division Director
Paul Myers, MMR
816-734-3719
paulwmyers@kc.rr.com

Train Show Chairman's for 2007

Louis Seibel 913-393-3495
L-Seibel@comcast.net
Brad Moreau 913-897-0699
bmorneau@kc.rr.com

Membership Chair Editor
Gary Hankins
913-782-3645
marlysdee@aol.com

L S Editor
Ted Tschirhart 816-861-3449
tedtschi@kc.rr.com
Louis Seibel
Nancy Chapman

AP Merit Awards and Achievement
Joe B. Robertson, MMR
816-331-2773
piperval@aol.com

Web Master
Paul Myers, MMR 816-734-3719
Paulwmyers@kc.rr.com

Web
<http://www.tc-nmra.org>
TURKEY CREEK DIVISION
IS A 501(C)(3) ORGANIZATION



THE SWITCHING LIST

The Switching List contains all known Mid-Continent Region, NMRA, train shows and Division meetings. It also lists all known club shows and swap meets in the Mid-Continent Region (IA, IL, MO, AR, NE, KS, OK). To list your event, send it to: garyonho@cox.net, or Gary Hemmingway, 3201 SW Stone Ave., Topeka, KS 66614. To subscribe, or unsubscribe, to The Switching List send an email to the above link. Look for us on the MCoR web site: www.mcor-nmra.org.

KANSAS CENTRAL DIVISION meets the 1st Saturday of even numbered months at various locations around the division area. This is a new schedule for 2007. BOD meetings are usually at noon and general meetings are at 1 p.m. For the full schedule check the MCoR website or email Gary Hemmingway: garyonho@cox.net. The next meeting is:

October 6, 2007: **Robert Stewart**: 249 Redbud Estates, Manhattan, KS: To get to Robert's home get on HWY 113 on the west side of Manhattan, KS. Turn East on Farm Bureau Road, turn North (left) at the mobile home park office building. After the road turns east (right) continue across the intersection to Robert's mobile home, #249 on the North side of the street. Please do not block entrances to other mobile homes. All are invited regardless of NMRA membership.

GATEWAY DIV. (ST. LOUIS, MO) meets 3rd Monday each month, 7:00 P.M. Odd numbered months: Trinity Lutheran Church, 14088 Clayton Road at Woods Mill Rd (Hwy 141), Ballwin, MO; Even numbered months: VFW Hall, O'Fallon, IL <http://www.gatewaynmra.org/division.htm>

TURKEY CREEK DIV. (KANSAS CITY, MO & KS) monthly meetings 4th Tuesday, 7:00 P.M. Johnson County Offices, NE Branch, 6000 Lamar, Shawnee Mission, KS (DMV Building on SW corner of Lamar and Martway)

WESTERN HERITAGE DIVISION (OMAHA, NE / COUNCIL BLUFFS, IA) meets second Saturday (except June and December) at noon. Sump Memorial Library, corner of Washington and Second Streets in Papillion (across from Runza). Visit www.whdnmra.org for more info and a map.

EASTERN IOWA DIVISION

Cedar Rapids, Iowa: Eastern Iowa Division Meeting Saturday, October 6, 2007 from 9:00 AM to 5:00 PM. The meeting will be held at the EOC/Training Room of the Linn County Emergency Management Agency on the Kirkwood Community College Campus (next to the tennis courts on the north side of the campus). Kirkwood Community College is located at 6301 Kirkwood Blvd. SW, Cedar Rapids, IA. The agenda for the day will include a short business meeting, a silent auction, two clinics from Eastern Iowa Division area members, and two model railroad open house tours after the meeting. Model judging for merit and AP will also be available. For additional information contact the Eastern Iowa Division Superintendent, Rich Mahaney at: 505-640-5909 or email: hazmatrichm@aol.com

KATE SHELLEY DIVISION meets monthly on the fourth Thursday of each month 7:00 p.m. at the St. Paul Lutheran Church, 15th & Wilson, Ames, IA.

INDIAN NATIONS DIVISION meets at the New Hardesty Library at 8316 E. 93rd. St. (Just east of Memorial) in Tulsa, OK. The time is from 9:30am to 12:30pm. The dates and themes for each meeting in 2007 are: Jan 20 - What did Santa Bring? March 31 - Locomotives, May 19 - Rolling Stock, Sept. 15 - Photography, Nov. 17 - Structures/Dioramas. Each meeting we have various presentations from clinics, to slide shows. After the meetings we have a layout tour at one of the members layouts. Contact Dave Salamon at drs_rr@yahoo.com for further information.

PLATTE VALLEY DIV. (HASTINGS, GRAND ISLAND, KEARNEY, NE) meets 2nd Tuesday of each month at 7:00 p.m. in members homes on a rotating basis. Info: John O'Neill, Div. Dir., 308-384-5011 or jponeill@computerconcepts.com. Next meeting at John's house: 4112 W. Faidley Dr., Grand Island, NE 68803. Two clinics by Jim Wells: "Coal and Coal Mines" & "HO Scale Coal Loads"

CLAREMORE & SOUTHERN RR OPERATING SESSION, 2nd Friday each month starting at 7:00PM and finishing by 10:00PM, 9372 E. Clover Creek Drive, Claremore, OK 74017-1487, Info: George F Maulsby, 918-341-9446 or www.csrailroad.com. Please RSVP approx. a week before each scheduled operations session. Thanks. George F Maulsby, Claremore & Southern RR www.csrailroad.com 918-341-9446

WICHITA TOY TRAIN CLUB TRAIN MANIA, each Saturday 12-5 P.M. below Blockbuster at Twin Lakes Shopping Center, 21st & Amidon, Wichita, KS 316-838-5103 or www.members.cox.net/wttc

TRAIN SHOWS & MEETS

NOV 3, 2007, KATE SHELLEY DIV, MCoR, NMRA, 16TH ANNUAL FALL MEET, United Community School, US Highway 30, between Ames & Boone, IA; 9 am – 3 pm, Adm: \$5.00 at door, Pre-registration \$4.00, clinics, silent auction, dealers, displays, layouts, door prizes, contest categories: diesel locomotives, coal hoppers, freight cars prior to 1960, box cars 50' or more, online structures, train-8 pieces; photo contest: structures, color/black & white, prototype & model; Info: Bob Folkmann 515-232-8689, Carl Chumos 515-233-8256.

NOV 3, 2007, GATEWAY DIV, MCoR, NMRA, ANNUAL FALL MEET, Trinity Lutheran Church 14088 Clayton Road at Woods Mill(Hwy 141), train show, operating layouts, clinics, door prizes, and self guided layout tours, Bob Boedges (rboedges@charter.com and 314-631-5371) is the Fall Meet Chairman. Brian Post (314-894-1154) is in charge of arranging tables for dealers at the train show segment.

NOV 17, 2007 – OZARK MODEL RAILROADERS ASSOCIATION 20TH ANNUAL TRAIN SHOW & SWAP MEET, King's Way United Methodist Church, 2401 S. Lone Pine, Springfield, MO; 9:00 a.m. – 3:00 p.m.; Adm: Adults \$5.00, age 7-12 \$3.00, 7 & Under Free w/pd adult, 8 foot tables \$20.00; Setup Friday from 4 pm – 8 pm only, vendor doors open at 7 am Saturday. Info: Gary Mills: 417-725-1433, GMOzarkTrains@aol.com or Larry Smith: LSmith7264@aol.com or 415-865-6250.



NOV 24, 2007 – JOPLIN MUSEUM COMPLEX TRAIN SHOW & SWAP MEET, Joplin Museum Complex is located at 7th and Schifferdecker Streets in Schifferdecker Park between the golf course and swimming pool. Admission is \$3 adult children 12 and under free. All proceeds at the door go to benefit the Joplin Museum Complex; operating HO, N and G gauge layouts and over 60 tables of items for sale and trade. For more information contact Rick Gardner at 417-673-4888 or email rickgardner@sofnet.com. Visit us on the web at www.tristatemodelrailroaders.com.

NOV 25, 2007 - MID- AMERICA TRAIN & TOY SHOW (formerly "Mid-America Train Meet"), BTC Exhibit Hall, I-435 and Front Street, Kansas City MO, 9am –2pm, Adm: \$5 adults, 12 & under, free, 7am early bird adm, \$10 ea. Trains, models, RR collectibles, toys, train movies, door prizes, operating layouts. Free parking. Info: Steve & Sherri Stich, P.O. Box 369, Leavenworth, KS 66048 or 913-651-5864. Directions: From I-435, exit 57 west (Front St) to Universal Ave. and turn right at stoplight. Or, from I-35, exit Front St. and continue east to Universal Ave., then turn left at stoplight.

JAN 26, 2008 – THE GREAT TRI-STATE RAIL SALE, Copeland Park, La Crosse, WI, info: Mark Hamre 608-784-0036 or Phil Lamke 608-582-4761 or email pdlamke@juno.com, or write to The 4000 Foundation, Limited, P. O. Box 3411, La Crosse, WI 54602-3411.

JAN 26-27, 2008 - TRAIN AND CIRCUS SHOW, Cisco, IL, I-72 Exit 156 between Decatur, IL, and Champaign, IL; **10:00** - 4:00 both days, breakfast and lunch available, 65 Vendor Tables, 5 Layouts: N, HO, O, and G; Donation \$3.00, trains@ciscojunction.com <http://www.ciscojunction.com>.

February 9, 2008 -- The Dupo Show: 18th Year, Sponsored by Reynolds Railways & Dupo Community High School, Dupo High Gym, 600 Admiral Trost Drive, Dupo, IL (I-255 to Exit 9; 7 minutes from the Arch in Downtown St. Louis, MO; hotel accommodations 7 to 10 minutes away in St. Louis South County, Downtown St. Louis, or Waterloo, IL.) 10 am - 3 pm; Adults \$3.00; 12 & under FREE with adult, 40-plus vendors, Lionel, Flyer, HO, N, etc., including operating layouts; Smoke-free environment. 8 ft. tables, \$12 each; tables usually sell out by January 1st; electric \$5.00; payment payable to Reynolds Railways must accompany registration; mail to Reynolds Railways, 212 North Main Street, Dupo, IL 62239; Seller set-up 7 a.m; ROTC carry-in/our service. Info: 618-286-3399.

FEB 9-10, 2008 -- WICHITA TRAIN SHOW & SWAP MEET, Cessna Activity Center 2744 George Washington Blvd., Wichita, KS, Sat: 9 – 5, Sun: 12 Noon – 4, Sponsored by Chisholm Trail Div. & Engine House Hobbies, Registration; \$6.00 both days. Advance table registration; before 12/ 31/07 take 10% off. Six foot tables are \$20.00 each, eight foot tables are \$25.00 each. Mail registration to: 603 Chestnut, Halstead, KS. 67056-2302, Email; aylward1@cox.net .

Here is the address to the latest online version of SER's The South-ErneR. I have to apologize about the download size for anyone who still has dial up like me. It is a 6.3 MB download, but it does have 70 pages with many, many color photos.

<http://www.ser-nmra.org/sou.htm>

There is more on the Detroit contest including many detail photos of the PRR Sandusky Coal Unloader model and a few photos of the present winner and some of the past winners of the William J. Lenior Award for best scratch built steam locomotive.

There is an article on the soon-to-start 5th annual Piedmont Pilgrimage which will run through the month of November and into the first weekend in December. The article features the HOn3 layout of Jim Hoffman whose layout has been used in a series of layout construction videos by Green Frog.

There are a couple of "how-to" or "how I did what" articles. There is a look at the SRR's former Norcross, GA train station - now a restaurant still located trackside in downtown Norcross.

There is also a day by day accounting of my experience before, during and after the Detroit convention as seen from the perspective of someone who helps run the contests at every national convention. It is a bit different from the "Oh Gee, Wow, I saw this and this and this..." perspective of your average convention attendee. More of a "down and dirty, this is what you did not see" perspective. However, before anyone runs off screaming about "my view of the Detroit convention contest", everything has been repaired, fixed, redone, or whatever was needed and we are running smoothly again.

Paul Voelker, SER Editor
NMRA Photo Contest





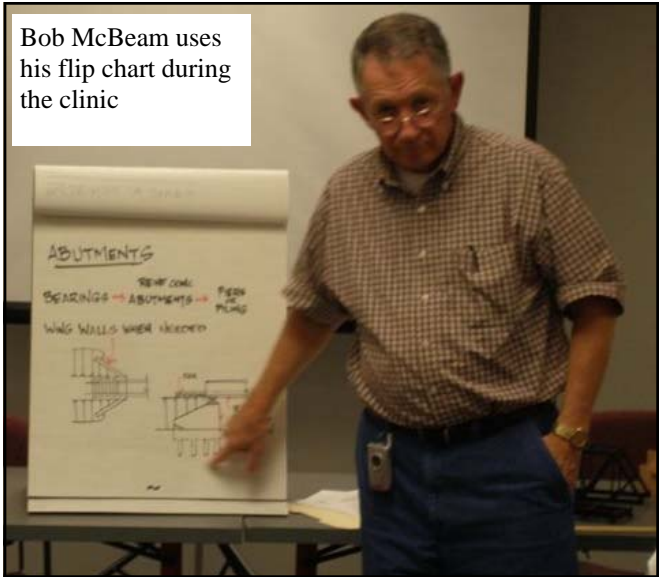
Paul Richardson MMR Clinic on Switch Stands for Dummies



Members of Turkey Creek



Members of Turkey Creek



Bob McBeam uses his flip chart during the clinic

Scratch Building Switch Stands

Plastruct part numbers and sizes:

90724 - .020" X .080"

90745 - .040" X .100"

90882 - .080" Half Round

90852 - .025" Round (Brass wire is MUCH better)

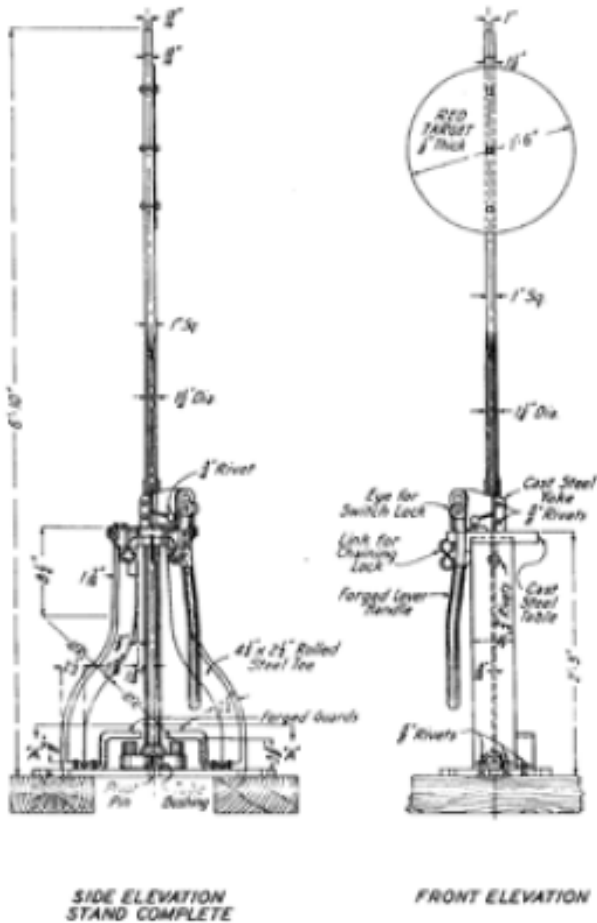
1) First, I cut the round target. I used a hole punch on some .016" sheet styrene.

2) Cut two pieces of half round at 3 foot lengths. You can bend the arch with your fingers. Put the crimps in 1 foot from each edge.

3) Cut a piece of the .020" X .080" @ 9 scale inches. This becomes the top plate for the stand. Drill a hole in the center of the plate with a bit big enough to get the .025" rod through it. MEK the two pieces cut in step 2 to the plate. Be sure to keep the edges flush.

4) Glue the wide end of the base down to a 5 foot piece of .040" X .100". This should be more than enough to span the ties on the turnout. Whatever is overhanging can be cut off and used to space the stand up if you need clearance for the throw bar.

5) Cut the 2 pieces of rod. 1 at 7 feet and 1 at 3 feet. MEK the 7 foot piece through the hole drilled into the top plate and to the base. The rod turns out very soft so I would really recommend brass wire for this part. Parts will have to be CA'd together instead of using MEK.



6) Cut a small piece of the .040" X .100" approximately 3 scale inches wide. This will represent the lock mechanism. MEK this to the top plate next to the staff. This will stick out past the side edge of the plate. This is OK since the mechanism did the same.

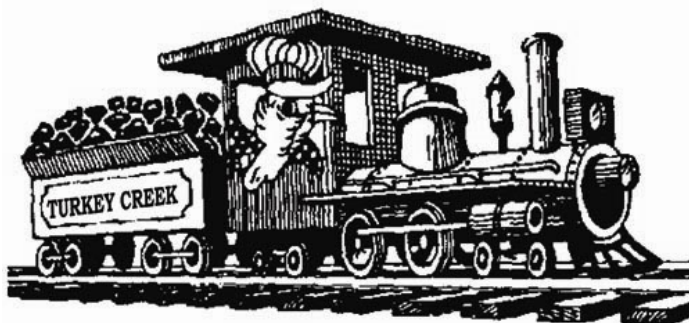
7) Crimp a bend in the 3 foot piece of rod. Just 4 or 5 scale inches from one end. This is the handle for the stand. MEK the crimped end next to the block you just MEK'd in place and against the staff. While on the prototype the handle would have come out of this the block and the staff would have gone through the block, in HO this is close enough that without close study the eye doesn't know the difference.

8) MEK one of the punched circles to the top of the staff.

9) Paint and mount it. I painted mine with Floquil weathered black and the targets are red for the mainline and yellow for sidings. I mount mine to the ties with ACC.

Duane Richardson, MMR, and Paul Richardson, MMR





Turkey Creek Show
 August 2, 2008
 Lenexa Community Center
 13420 Oak, Lenexa, KS (Pflumm & Santa Fe Drive)

Activities planned for this year's meet include:

- o **Clinics** – a full slate of clinics covering many aspects of the hobby.
 - o **Model & Photo Contests** -By Popular vote with NMRA Achievement Program judging available. *Each model (up to a maximum of 5 models) you enter in the model contest will automatically qualify you to be entered in to a special drawing to receive a \$50.00 gift voucher. Special Youth Award for the best overall youth model entry 16 and under.*
 - o **Door Prizes** – Additional door prizes will be set aside for advance registrants.
 - o **Display Layout and Layout Tours** – In addition to the display layout at the meet, several local modelers will be opening their homes to layout tours in the afternoon and evening. Layout tour maps will be available for collection with your registration.
 - o **Swap Tables and Railroad Groups** – Expect to find more than 70 tables from area dealers, local hobbyists and other railroad groups. For information on tables contact Robert Jefferis at jeffbobj@everestkc.net.
- Food and Refreshments** – Scout Troop 92 will have food and refreshments available during the show.

Turkey Creek 2008 Division Meet Registration Form			
Advance Registration: \$4.00 ♦♦♦♦ Full Registration: \$6.00 (\$5.00 NMRA member) at door Children under 12 free with paid registration			
	Advance Registration (\$4.00)	No. Registration	Total Cost
Name:			
Address:			
City			
State Zip			
Telephone #:		Total Enclosed:	
E-Mail Address:		Scale Modeled	
More Registrant Names:			
Make Checks Payable to: "Turkey Creek Division" Mail to: Turkey Creek Show, C/o Robert Hollowell, 2013 SE Stratford, Blue Springs, Mo 64014 4047			

Louis,

As mentioned I have a fairly large HO layout (16 by 16) which I have dismantled. We are moving to Arizona and I will have no room for it there, so would like to sell it to someone who appreciates it. NOT LOOKING FOR TOP DOLLAR!!! I modeled primarily modern-era freight, and most is in good to excellent condition. This is just a general idea of what I have:

- a. Oregon Rail single-target signals--LED's--several dozen
- b. Circuitron block detectors
- c. Many large buildings--both scratch built and kits (one has red flashing light on the roof!)
- d. DPM and like-type buildings--many with lighted interiors
- e. Campbell two track truss bridge, Queen Anne House, other high-end kit structures
- f. Several dozen Atlas Mark III #6 switches and 2 Shinohara crossovers and 1 Shinohara curved #6
- g. Herpa, Busch, Viking, etc. cars and trucks--several dozen
- h. Rolling stock is primarily Athearn and Roundhouse with metal wheel sets and some resistor axles
- i. 3 pair of NJ International crossing gates (with Tortoise set ups)
- j. 3 Grade Crossing Pro circuits
- k. Several Engines including 2 Genesis SD70s--all Southern Pacific
- l. Transformers--step down for lighting, switch power, signal system, etc.
- m. LOTS of trees, some Sweetwaters, home made, palms, firs, etc.
- n. Electrical miscellaneous, power packs, etc.
- o. Scratch Building Materials
- p. TTX Inter modal cars and double stack containers

Lot of miscellaneous stuff as well. Would like to unload the whole package rather than piecemeal it, but. talk to me. I live in the 151 and Mission area, but could deliver in the Metro

John Upton
3300 W 151 St
Leawood, KS 66224

Turkey Creek Division Train Show
August 2 2008
Lenexa Community Center
Lenexa, Kansas

The first meeting of the committee will be on November 8th at 7 PM. The meeting will be held at Louis Seibel's home 1069 N Logan Olathe Ks 66061. This meeting is open to anyone who would like to help with next year's meet. The following committee head positions are open: Door Prizes and PR. If you are interested in helping on any of the Committees please come to the meeting. Here is a list of the committee and the contacts for them.

Show Chairman: Louis Seibel L-seibel@comcast.net
Registration: Bob Holloway irongoat@comcast.net
Door Prizes: Open
Clinics: Jack Ferris jackferris@earthlink.net
Model & Photo Contest: Paul Richardson MMR paul@purgatoryanddevilriver.com
Layout Tour: Brad Morneau bmorneau@kc.rr.com
Swap Tables and Railroad Groups: Robert Jefferis jeffbobj@everestkc.net
PR: Open
Food and humenczuk@kc.rr.com
kerryleonlindenbaum@kc.rr.com

Lighting Slinger Editor: Ted Tschirhart tedtschi@kc.rr.com

Thank you all for volunteering your time in advance.

Also, I would like to have any of the members from this year's committee to come to this meeting and give the new members support and any information to them.

Louis Seibel Chairman



Bachmann purchases Williams Electric Trains; Jerry Williams retires

October 16, 2007

**The following is a press release from
Bachmann Industries, Inc.**

Mr. Jerry Williams, President/Owner of Williams Electric Trains, Columbia, MD and Mr. Bud Reece, Senior Vice President Sales & Marketing, along with Mr. Ed Winter, Senior Vice President Finance & Operations, Bachmann Industries, Inc., Philadelphia, PA announce the acquisition of the assets of Williams Electric Trains.

After 35 years, Mr. Jerry Williams decided to retire from the model railroad business. Bud Reece had contacted Mr. Williams a year earlier and planted the seed for the possibility of this acquisition. Bachmann has been in business since 1833 and has an extensive line of model trains and accessories in HO, N, On30, and Large Scale. Reece observed that the Williams O gauge 3-rail fits perfectly into the Bachmann family and complements the O scale Plasticville® U.S.A. buildings that Bachmann has been producing for 60 years.

Reece is very pleased to also announce that Mr. Larry Harrington, General Manager of Williams for several years, will be joining the Bachmann team as General Manager of the O gauge division. "I am very happy that Larry will be joining us, since his experience and background in the 3-rail market and Williams in particular will be invaluable to us."

"We at Bachmann feel that the Williams brand is very important in the 3-rail market place. We will continue to use and promote the Williams name as "Williams by Bachmann" to capitalize on both brand names. With the help of Larry Harrington, we plan to expand the availability of Williams by Bachmann products by supporting both the current Williams dealers and our national distributors. We will certainly continue to honor warranties from Williams, and we also hope to continue the Platinum Club on a modified program, yet to be determined, plus offer and expand the club to all of our Bachmann family."

"We couldn't have asked for a nicer gentleman than Mr. Jerry Williams to work with during the negotiation of this acquisition. Not only his patience and understanding, but his friendship, are greatly appreciated. I am very pleased that Mr. Williams has voluntarily agreed to council with Bachmann, and I for one will certainly take him up on that offer," assured Reece.

Ozark Model Railroad Association Presents

29th Annual Train Show & Swap Meet

Saturday, November 17, 2007

9 am – 3 pm

King's Way United Methodist Church

*2401 S. Lone Pine
Springfield, MO.*

*Railroad Memorabilia
HO, N, O, Lionel & G Scale
Lots of Model Trains for sale!
and Layouts*

Free parking with easy access to show

Admission: \$5.00 Adults

Children 7-12, \$3.00

7 & Under FREE

For more information on show contact:

AL Freeman-417-443-1014-dragonden51@yahoo.com

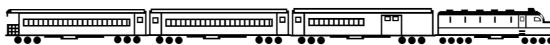
Dale Irvine - bowlanmrr@mchsi.com

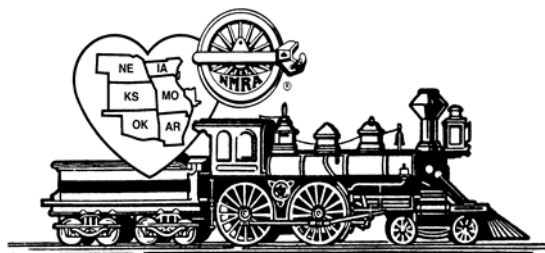
For Vendor information contact:

Gary Mills - 417-725-1433 - GMOzarkTrains@aol.com

Larry Smith - 417-865-6250 - Lsmith7364@aol.com

Check out our website: omra.homestead.com





Mid-Continent Regional Convention / *BRANSON EXPRESS 2008*
Hosted by the Ozark Mountain Area
MAY 15-18, 2008 IN BRANSON, MO
STONE CASTLE (formerly Settle Inn)

3050 Green Mountain Dr. 800-677-6906 group # NMRA-5158 rate \$69.98 +tax

Activities planned for this year's meet include:

Door Prizes and Silent Auction - for all registrants.

Display Layout and Layout Tours – In addition to the display layout at the meet, several local modelers will be opening their homes to layout tours Friday afternoon and evening. Layout tour maps will be available at registration.

Excursion train trip – On the Branson Scenic Railway. Information will be available at registration.

Model & Photo Contests – by NMRA judging and Poplar vote.

Clinics – a full slate of clinics covering many aspects of the hobby. For Clinic registration contact Tom McMorran at k_t_mack@yahoo.com or 417-239-2776.

Swap Tables and Railroad Groups – Approximately 75 tables for area dealers, local hobbyists and other railroad groups. For information on tables contact Tom McMorran at k_t_mack@yahoo.com or 417-239-2776.

BRANSON, MO – Live entertainment capitol of the U.S.A., with over 52 show venues. Plus Silver Dollar City, Celebration City, Branson Belle and three lakes for boating and fishing. There is something for every member of the family to do in Branson, so make the trip to the convention a family vacation. For information log onto explorebranson.com or call 800-214-3661.

Mid Continent Regional Convention / *Branson Express 2008* Registration Form

Advance Registration (until October 31,2007) is: \$55.00 for the convention & banquet
 Full Registration (after October) is \$45.00 for the convention and/or \$25.00 for the banquet
 Swap tables @ \$20.00, plus \$15.00 Branson City Vendor License fee (March 31,2008)

	Number of attendees / tables	x	Cost	=	total
Advance Registration (before 10/31/07)			\$55.00		
Convention Registration			\$45.00		
Banquet			\$25.00		
Swap Tables (maximum of five)			\$20.00		
Branson Vendors License	1		\$15.00		
			Total Enclosed:		

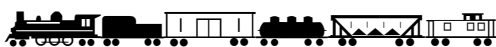
Name _____ e-mail _____

Address _____ phone _____

City _____ State _____ Zip code _____ - _____

Additional attendees _____

Make Checks Payable to: "Branson Express 2008"
 Mail to: Tom McMorran, 730 Emerald Pointe Dr #433, Hollister, MO 65672



TURKEY CREEK DIVISION
4954 Marsh Avenue
Kansas City, MO 64129-2111



FIRST CLASS MAIL
ADDRESS SERVICE REQUESTED 4955

mcor-nmra.org/divisions/turkeycreek/

TURKEY CREEK DIVISION MEETING

7:00 P. M. November 27, 2007
Johnson County Offices

November 27

December 18 the Third Tuesday

2008

January 22

February 26 - meeting place to be announced

March 25

April 22

May 27

June 24

July 22 - meeting place to be announced

August No Meeting

August Train Show 9 or 16 Saturday

September 23

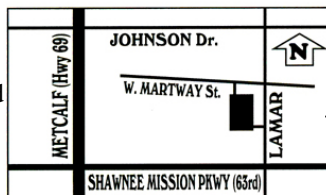
October 28 - meeting place to be announced

November 25

December 16, Third Tuesday of the Month Holiday Party

All meetings start at 7PM

Northeast Johnson County Offices 6000 Lamar, Mission, Kansas



We meet at the NE Johnson County Office, located at 6000 Lamar, Shawnee Mission, KS (the southwest corner of West Martway and Lamar).

