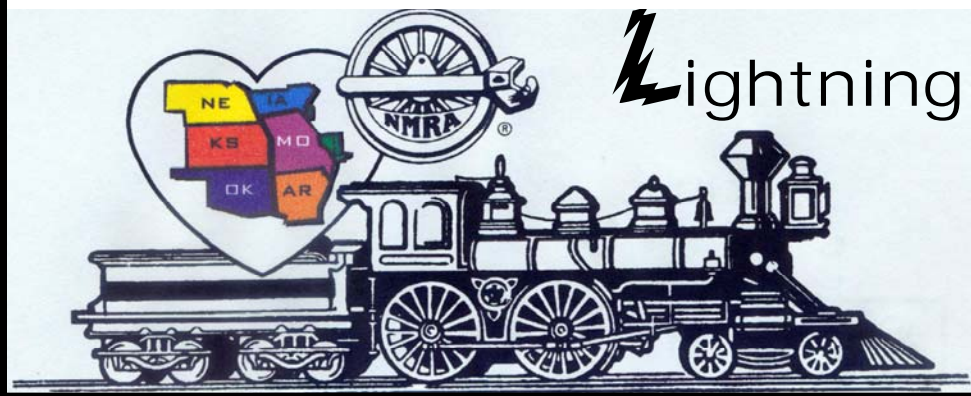


# Turkey Creek Division



Lightning Slinger

VOL. 20 NO. 2

“For all gauges and all ages”

February 2007

MONTHLY PUBLICATION OF THE TURKEY CREEK DIVISION  
OF THE MID-CONTINENT REGION, NMRA

**February 27, 2007**

**7:00pm**

Overland Park Community Center  
87th & Lamar  
Room 205  
Overland Park, KS

**Meeting**

**February Clinic**

**The first of the two clinics** will be given by  
Brad Morneau and is a surprise clinic,  
so be prepared for anything!

**The second** of the two clinics will be Scratch Building  
View Blocks by Gary Hankins.



## ***From THE SUPER'S DESK....***

*Kerry Lindenbaum*

Last week's meeting was my first sitting in the superintendent's chair and although I was nervous, everything flowed very smoothly. I was able to get about five or six new clinics for this coming year. Two of these will be given at the next meeting in February.

The first of the two clinics will be given by Brad Morneau and is a surprise clinic, so be prepared for anything! The second of the two clinics will be Scratch Building View Blocks by Gary Hankins.

I will not be in attendance next month. My wife is having a birthday and I will be taking her to dinner at her favorite restaurant, so Paul Richardson will fill in for me.

Last weekend, I attended my very first Regional meeting. Besides being long and sometimes emotional it was also very interesting. Let me try to recap some of what I learned at that meeting.

First, we are by far the most active division in our region. We had no less than 35 AP awards for last year out of a total of 76. We have just under half of all our regions AP activity for 2006. The next best division was the St. Louis Gateway Division at 15. So keep up the good work everyone!

Second, the region has formed a committee to see how they might serve NMRA members better. They will be tasked with identifying what the region does right, what it does not do right and recommendations based on those findings. Our own Paul Meyers will serve on this committee, so if you have positive thoughts that could help him do a better job representing our interests, be sure to contact him.

Well it is time to close for now. Remember next month's meeting will be held at the Overland Park Community Center located at 87<sup>th</sup> and Lamar, which is south of our normal meeting place. The room number will be 205.

See you at the March meeting, until then happy railroading!

*Kerry Lindenbaum*

Turkey Creek Superintendent



## **OFFICERS**

**Superintendent**  
Kerry Lindenbaum  
NMRA LM 5767  
913-648-8201

[kerryleonlindenbaum@kc.rr.com](mailto:kerryleonlindenbaum@kc.rr.com)

**Paymaster**  
Jack Boren  
913-962-2408

[mccjbcmd@mindspring.com](mailto:mccjbcmd@mindspring.com)

**Clerk**  
Louis Seibel  
913-393-3495  
[L-seibel@comcast.net](mailto:L-seibel@comcast.net)

**Division Director**  
Paul Myers, MMR  
816-734-3719  
[paulwmyers@kc.rr.com](mailto:paulwmyers@kc.rr.com)

**Train Show Chairman's for 2007**  
Louis Seibel 913-393-3495  
[L-Seibel@comcast.net](mailto:L-Seibel@comcast.net)  
Brad Morneau 913-897-0699  
[bmorneau@kc.rr.com](mailto:bmorneau@kc.rr.com)

**Membership Chair Editor**  
Gary Hankins  
913-782-3645  
[marlysdee@aol.com](mailto:marlysdee@aol.com)

**L S Editor**  
Ted Tschirhart 816-861-3449  
[tedtschi@kc.rr.com](mailto:tedtschi@kc.rr.com)  
**contributors**  
Nancy Chapman  
Bill Hickory  
Louis Seibel

**AP Merit Awards and Achievement**  
Joe B. Robertson, MMR  
816-331-2773  
[piperval@aol.com](mailto:piperval@aol.com)

**Web Master**  
Paul Myers, MMR 816-734-3719  
[paulwmyers@kc.rr.com](mailto:paulwmyers@kc.rr.com)

**Web**  
[www.mcor-nmra.org/divisions/turkeycreek](http://www.mcor-nmra.org/divisions/turkeycreek)

TURKEY CREEK DIVISION  
IS A 501(C)(3) ORGANIZATION



# Minutes for Turkey Creek Meeting

Turkey Creek Minutes for January 23, 2007

Kerry Lindenbaum, Turkey Creek new Superintendent, opened the meeting at 7pm.

He thanked everyone for coming to the December party. He thought that every one had a great time including the wives.

Louis Seibel presented a check from Union Station to Turkey Creek for \$188. This was for the volunteer work by a couple of members on the G-gauge layout at Union Station during the Christmas set up.

Jack Boren gave the Paymasters report which will be in this issue of the LS.

Kerry called for members to do clinics for future meetings. The February meeting will feature Brad Moreau and Gary Hankins. Paul Richardson MMR presented Certificates to Warren Weston MMR and Marty Vaughn MMR for doing clinics in 2006.

The Modeling project will be held in June instead of May. The project is an area of not more than 4 square feet. There will also be an article with more detail in this issue of the LS.

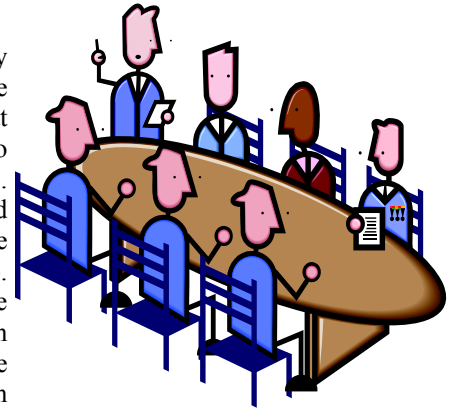
Paul Richardson MMR talked about the AP program. Brad Moreau will hold another Saturday session at his home on Feb 17 at 1pm. For directions contact Brad at [bmorneau@kc.rr.com](mailto:bmorneau@kc.rr.com). For a list of items needed for the class contact Paul at [paul@purgatoryanddevilriver.com](mailto:paul@purgatoryanddevilriver.com). If you are having trouble with the paper work for the AP program, contact Paul Richardson MMR, Joe Robertson MMR at [piperval@aol.com](mailto:piperval@aol.com) or Marty Vaughn MMR at [wmmaughn@mchsi.com](mailto:wmmaughn@mchsi.com). Also, here is the link to the National web site for the AP Programs <http://www.nmra.org/achievement/>.

Richard Brown is looking for some help building a home layout. He had questions on Electrical and on the Radii to use. He was also interested in getting more involved in the group.

Louis Seibel talked about the Regional Convention. The registration form is available on the Turkey Creek web site. He said that Frank Ciccarella has received some registrations and Louis brought some to the meeting so that members could fill them out. Louis said that he had to give a report at the Regional Board Meeting this weekend. He also said they need volunteers to do clinics at the convention and also some to be in charge of the Clinics. If you like to do either, please e-mail Louis at [l-seibel@comcast.net](mailto:l-seibel@comcast.net).

Dennis Owens is in charge of the Burlington Route Historical Society Convention in September of this year. He asked if anyone would be interested in helping. For more information see article in this issue.

Louis said Turkey Creek has a table at the show in March and that he needs volunteers to help man the table. Jack Boren and Richard Brown have volunteered to help. Louis asked if anyone would be interested in helping with the Love Fund program on February 16 from 8:30 to 3:00. Richard Brown and Tedy Bellos said that they would help.



Joe Robertson MMR AP Merit Awards and Achievement Officer gave out awards to Brad Morneau for Structures, and Peter Bellos was given his last two AP certificates in Electrical and Scenery awards and his MMR certificate No 386. There is more information on Peter in this issue.

During the break, the monthly clinic was set up.

Robert Jefferis brought a tape on a clinic by Larry Long MMR in August of 1989 at a Mon-Kan RailJoiners meeting at the Olathe Library.

The clinic presented at the January 23 meeting was a videotape made by Bob Jefferis of a clinic done for the Mo-Kan RailJoiners in August, 1989, by Larry Long titled "Layout Planning".

Larry started by saying that this was not Layout Design, rather Layout Planning. He looked at such diverse things as layout height, layout width (of a section), how much time you can devote to model railroading, how much money you can devote, what kind of trains you want to run and whether you want to run to a timetable or do industrial switching. And from there he expanded.

Larry was MMR 179 and unfortunately left the rest of us a few years ago. He was one of those who were most influential in getting the National NMRA Convention in Kansas City in 1998. His presentation had the group laughing frequently and reminded us of how much we as a group still miss him.

Bob Jefferis

With that I will end my report.

Respectfully, Louis Seibel, Clerk

**Next Meeting will be on February 27 at the Overland Park Community Center 87<sup>th</sup> and Lamar Room 205**



# Mid –Continent Region Convention / Turkey Creek Show

January 11 meeting update

Meeting 7pm

Chairman: Louis Seibel [l-seibel@comcast.net](mailto:l-seibel@comcast.net) 913-393-3495  
Co Chairman: Brad Morneau [bmorneau@KC.RR.Com](mailto:bmorneau@KC.RR.Com) 913-897-0669  
Registration: Frank Ciccarella [fciccarella@aol.com](mailto:fciccarella@aol.com) 913-915-8092  
Advertising: Gary Hankins [marlystee@aol.com](mailto:marlystee@aol.com) 913-782-3645  
Clinic Chairman: Open  
Model & Photo Contest: Paul Richards MMR  
[paul@purgatoryanddevilriver.com](mailto:paul@purgatoryanddevilriver.com) 816- 866-4043  
Door Prizes: Jack Rosenfield [jrosenfield@kc.rr.com](mailto:jrosenfield@kc.rr.com) 913-451-2177  
Layout Tours: Kerry Lindenbaum [kerryleonlindenbaum@kc.rr.com](mailto:kerryleonlindenbaum@kc.rr.com)  
913-648-8201  
Swap Tables and Railroad Groups: Robert Jefferis  
[Jeffboj@everestkc.net](mailto:Jeffboj@everestkc.net) 913-631-4441  
Food and Refreshments: Scout Troop 92  
Mid –Con: Larry Alfred MMR [lalfred2@comcast.net](mailto:lalfred2@comcast.net) 913-782-6584

Reports:

Chairman: Still need someone to chair the Clinics. Meeting room for MC board meeting set up at Johnson Country Northeast Offices on Friday 9 to 5.

Co Chairman: Not Present

Registration: Out of country; wants the registration form on web site, and we have our first registration.

Advertising: Not present; wants a copy of what we want as an ad for the magazines; suggests we pay for ads, is not very much.

Clinic: Open

Model & Photo Contest: Both AP and Popular vote, Mid-Con to supply the plaques for AP, Turkey Creek will supply the Awards for Popular Vote.

Door Prizes: Gave information on last year's donations, will e-mail lists, suggested that he get new vendors for this year from Model Railroader.

Layout Tours: good list of layouts in TC, no Friday night tours.

Swap Tables and Railroad Groups: Information to last years vendors will be sent by end of month, vendors must have check in by June 15, tables needed for Door Prizes (3 X 8'), NMRA (1 X 8'), Registration (2 X 6'), and train layout 14'X 20' Heartland.

Food and Refreshments: Troop 92

Mid –Con:

Next meeting: February 15, 2007 7pm Louis Seibel home

## KCS returning to historic diesel colors

December 29, 2006

KANSAS CITY, Mo. - A Kansas City Southern source confirmed to Trains News Wire on Friday that the railroad's new EMD SD70ACe locomotives that are on order will be painted in a variation of the railroad's historic red, yellow, and Brunswick (extremely dark) green passenger-train livery. A version of those colors is worn by KCS's "executive F-unit diesels" and business cars, but freight locomotives are gray with yellow stripes. It is believed that this new scheme will be applied to future KCS locomotives orders, and to existing units as they are shopped, but no confirmation on that point was available Friday.

KCS passenger diesels and cars wore variations of red, yellow, and Brunswick green from the 1940s into the late 1960s (freight units wore red and black, and switchers were all black), when an all-white scheme was adopted for passenger and freight locomotives. Only two E-series passenger diesels were repainted white, and the cars kept their historic colors until KCS quit all passenger service in 1969. Gray replaced white as the basic diesel color beginning in 1989.

KCS's business cars always retained the historic colors, and the F units that KCS boss Mike Haverty brought in to pull the expanded fleet in 1996 were painted to match them (Brunswick green is dominant, vs. yellow on the old E units). When passenger service was re-introduced in 2001 on KCS's newly acquired Panama Canal Railway, the cars and the ex-Amtrak F40's purchased for it were painted in the historic passenger colors, and KCS also applied the livery to an F unit donated in 2006 to the Union Station museum in Kansas City.



# SNOW TRAIN TOSHAVANO

by Ron Morse, MMR

It has been snowing like crazy in Colorado!! So, I was able to get this shot of a Forks Creek and Central freight train crossing the Fall River Trestle as it headed north from Shavano, Colorado a few days ago.....  
\*\*\*\*\* .....and.....\*\*\*\*\*



Ron Morse, MMR

.....if you believe that.....well, I have some other properties I would like to sell you....:O)

Actually with all of our surgeries and upcoming surgeries (Vicki and I have had six surgeries between us in the last six months) I needed a "quick" model railroad project to keep my model railroad and photo skills going. So some recycling seemed like the thing to do.....At this stage I have 7.75 hours in this, counting the photo imaging and editing time. This obviously does not take into account ALL the hours that were originally spent in creating the diorama pieces, the engine etc., etc....(maybe 100 hours+)

So here is the scene I have been playing around with.. [Snow Train from Shavano"](#)

- The scene is 'HO' scale (1/87). [The entire scene is about 18" wide and 12" deep.](#)
- The backdrop and the distant trees section came from my Victoria Falls Depot diorama (I hand painted the backdrop, etc.). See December 2007 NMRA Calendar.
- The trestle and the foreground scenery came from the model railroad layout that I had when we moved to Kansas in 1984! I saved this section as the trestle and the bridge abutments were scratch built. This section has been sitting under my train layout for 20 years!!!!
- Powdered marble dust for the snow.
- I made some bottle brush trees for the foreground.
- Aquarium filter floss (painted black and wiggled with a piece of thread) for the smoke .
- The picture was shot on a Canon EOS 20D. Exposure was 2.5 seconds @ f/22 with an ISO of 100 with the lens set to 22 mm. It was shot under florescent lights on AWB and then tweaked in PhotoShop.

\*\*\*\*\*



## Reign of the Rail Riders: An art exhibit exploring the kings and queens of the American hobo culture

There is Luther the Jet and Cannonball Eddie; Scoop Shovel Scotty and Connecticut Shorty to name just a few. Each one crowned a king or queen of the hobos. Now their portraits, created by Leanne Marlow Castillo, are part of a 12-painting exhibit exploring these cultural icons at the National Railroad Museum ([www.nationalrrmuseum.org](http://www.nationalrrmuseum.org)). Reign of the Rail Riders will be open from January 26 to July 31, 2007.

Since the late 1800s, the annual national hobo convention has been held in Britt, Iowa. Among the festivities is the election and coronation of the king and queen of the hobos. To set the slate of candidates for this honor, a committee reviews all those seeking the office to ensure that only the true rail-riders make the ballot. According to the Hobo Foundation ([www.hobo.com](http://www.hobo.com)), the first king, Charles Noe, was elected in 1900.

Leanne Marlow Castillo, an Iowa artisan, working in some cases from historic photographs, has created a series of 58 portraits spanning over a century of hobo kings and queens. Ms. Castillo renders her works in oil, watercolor and pastel on canvas board. In addition to her hobo works, she is an avid painter of old Iowa farm barns. Like her farm scenes, the hobo portraits are displayed in frames fashioned from authentic Iowa barn boards. "As an artist Ms. Castillo has opened an interesting visual window into the hobo culture," commented Michael Telzrow, Museum executive director. "The striking primary colors and naïve approach to portrait painting brings these hobo icons to life." "Hobos are woven into the fabric of American railroading," stated Charles Schuetz, Museum curator. "Many people can still remember the hobos; and even though their travel habits and way of life was not always safe or legal, they brought a dynamic culture within a culture to our country."

Hobos are often thought of as wanderers, who travel by catching freight trains. The origin of the term hobo or when the first hobos took to the rails is uncertain. The hobo population increased dramatically in the 1930s because of the Great Depression and has waned since that time.

The National Railroad Museum is located at 2285 South Broadway, Green Bay, Wisconsin. Hours are 9 a.m. – 5 p.m. Monday – Saturday and 11 a.m. – 5 p.m. Sunday. Reign of the Rail Riders is included in the regular admission.

Founded in 1956, the National Railroad Museum marked 50 years of preserving America's railroad heritage in 2006. Visiting the National Railroad Museum offers you an opportunity to explore America's railroad heritage. Sit in the cab of the Union Pacific Big Boy, the world's largest steam locomotive. View Gen. Eisenhower's World War II command train. Examine the future of railroading in the sleek 1955 General Motors Aerotrain. The Museum is one of the oldest and largest institutions of its kind in the U.S.

## Hello Everyone,

I am asking you to consider putting your layout on tour in August. Some of you did so last summer and told me that you enjoyed it. Here is your change to do it again.

The show will be on August 4<sup>th</sup> this year. August 4<sup>th</sup> is a Saturday. The tour will start an hour later due to additional awards and a business meeting. Therefore, the first tour will begin at 4pm and last until 7pm. The second tour will begin at 6pm and last until 9pm. There will be no Friday tour, just the two tours on Saturday same as in years past.

The division officers will be in town for this meet and might also attend the layout tours. But other than division meetings on Friday and Saturday, the meet is still a regional meet.

We have asked for new layouts and have got five new layouts that have not been shown or shown recently, but we do not want to exclude those who enjoyed displaying their layouts last year.

I have received replies from Joe Ringbauer, Charley Stapleton, Steve Priest and Floyd Brittain. I could use some more layouts for the tour. So if you have not responded, please do consider showing off your layout. I got positive feedback from everyone who participated last year.

I will work with all of the volunteer layout owners on best tour times. But first lets get as many layout owner's layouts on tour as possible, then we will plan how best to show the layouts on tour.

Please contact me by replying to this e-mail, or my e-mail address is:

[kerryleonlindenbaum@kc.rr.com](mailto:kerryleonlindenbaum@kc.rr.com)

Remember if you do reply by email, 'reply to sender' only.

By phone: (913) 648-8201

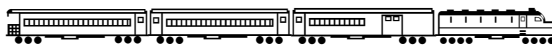
By mail: 10700 Walmer St.

Overland Park, KS 66211-1113

I hope we can have all your layouts on tour this year.

Kerry Lindenbaum

Layout Coordinator and 2007 Supervisor



# Modeling Tips & Tricks Tracks in the Alley

In many cities railroad lines are definitely not the focal point of commercial or residential areas. In fact, in many places they're often intentionally obscured to minimize their visual impact. Here are a few tips for detailing urban scenes along the right of way.

- **Building Placement:** Except in a few rural communities, commercial buildings, apartments and houses face away from the tracks. Trackside scenes should incorporate the backs of buildings complete with stairways, garages, alleys, building add-ons and overgrown areas.
- **Alleys and Streets:** Often, alleys and streets are sandwiched between the backs of adjacent structures and the edge of the roadbed. Some may be separated from the tracks by fencing or dense tree lines. Don't forget to add junk cars and garbage cans.
- **Dead Space:** An important part of detailing any urban right of way, this is the area along or behind fences of adjoining lots. In older neighborhoods, this may be where junk and abandoned autos accumulate. Here you'll also see plenty of weeds and bushes.
- **Lineside Structures:** On lines with plenty of grade crossings, and along signaled lines, don't forget to add telephone poles, relay/electrical cabinets, battery boxes and signals. In bad neighborhoods these almost always have graffiti and bullet holes.

Walthers [walthers.eupdate@walthers.com]

## 2007 Turkey Creek Division Modeling Challenge by Rusty Rails

Here we go again! For the 4<sup>th</sup> Annual Modeling Challenge, you must build a diorama or display of four square feet or less. This is the theme voted on by the members attending the May meeting last year. If this idea sounds familiar, it should, because it is essentially the same as the "Square Footer" challenge held in 2004, except that now you are allowed to develop up to four square feet.

So, what can you build on four square feet? In G scale, you could fit a small locomotive servicing facility, small industrial area, or simply scenery effects of some sort. In Z scale, you could probably model the Kansas City West Bottoms. In N, HO, S, or O, you'll be somewhere in between, with possibilities only limited by your imagination.

There is no restriction on how high your scene can go, so you can model a mountain or a twelve story building. If you're into Colorado mining, you could put an ore mill on a mountain side with tracks at the bottom for cars to pick up the refined ore. If coastal railroading is your bag, then a pier scene may be for you. Another thought might be a scene with an overpass with a train on the lower and upper levels.

If you're into city scenes, you could model the backside of some trackside tenements with Mrs. McGurty waving at the engineer while she's hanging out laundry. Another scene that would be interesting would be a station with passengers waiting for a train or perhaps boarding a passenger train.

There is no restriction on the diorama, except that the base cannot exceed four square feet and, of course, it must fit through the door of the meeting room! So it can be 2'x2', 1'x4', 6"x 8', and so on. Can it be smaller? Sure. If you already have a base you want to use and it's less than four square feet, that's fine. Do you have to have a train on the diorama? Nope. It's up to you what to include.

The judging will be by popular vote, so crowd appeal will be important. The event will take place at our June 26<sup>th</sup> meeting (not the May meeting, as usual), so you will have an extra month to construct your entry. There will be three places awarded for this challenge, plus awards for the "Most Creative" and the "Most Whimsical" entries. So, if you're entering a diorama, start thinking about your model now. There is plenty of time, but don't put it off. This will be another fun event!



# Meeting 1-23-2007

Photos by Louis Seibel

Brad Morneau  
receiving his AP  
certificate for  
Structures  
Joe Robertson  
AP Chairman



Warren Weston MMR and  
Marty Vaugh MMR with  
certificates for doing clinics in  
2007 for past Superintendent  
Paul Richardson MMR





# Pete Bellos MMR 386

Pete earned his last two required AP certificates in Electrical and Scenery and with those became the newest MMR in Turkey Creek. Pete holds certificates in Cars, Structures, Scenery, Electrical, Volunteer, Official and Author.



Anyone who has lived in the Kansas City area knows Pete, he has been a long time supporter of the NMRA, holding most of the jobs available, including AP Chairman. In fact, Pete was one of the members who judged the current MD-CON AP Chairman Marty Vaughn's first AP effort 25 years ago. Marty was one of the judges for Pete's Scenery certificate, bringing the judging full circle.

Pete is a long time Sn3 Modeler who builds some beautiful scratch built models.

When presented with his MMR plaque, Pete told the group; "If I can do this with one hand there is no reason why anyone can't earn their MMR."

Sounds like Pete has laid down a challenge to all of us!



2006 Cash Flow  
1/1/2006 Through 12/31/2006

Annual Account Balances 2006  
As of 12/31/2006

1/18/2007

Page 1

Category Description	1/1/2006-12/31/2006
<b>INFLOWS</b>	
Area Meet Inc	
2006 Area Meet Incom	
Pre-Registration	212.00
Registration	1,062.05
Vendor Tables	1,200.00
TOTAL 2006 Area Meet Incom	2,474.05
TOTAL Area Meet Inc	2,474.05
Dues	
2005	2.00
2007	132.00
2008	12.00
TOTAL Dues	146.00
Int Inc	826.26
Merchandise	4.50
Other Inc, Bus	110.00
<b>TOTAL INFLOWS</b>	<b>3,560.81</b>
<b>OUTFLOWS</b>	
Admin	118.20
Area Meet - Exp	
2006 Exp	
Award Contest Room	50.00
Award Plaques	401.17
Facility	896.50
Misc	118.94
Postage	296.23
Publicity	156.57
Security	88.00
Table Rental	464.60
TOTAL 2006 Exp	2,478.01
2007 Exp	
Facility	100.00
TOTAL 2007 Exp	100.00
TOTAL Area Meet - Exp	2,578.01
Bank Chrg	10.00
Corp Registration	40.00
LSlinger	
Misc	23.22
Post	667.61
Printing	998.20
TOTAL LSlinger	1,689.23
Miscellaneous, Bus	23.73
Postage and Delivery	8.25
Publicity	93.02
TC_Awards	74.19
<b>TOTAL OUTFLOWS</b>	<b>4,632.63</b>
<b>OVERALL TOTAL</b>	<b>-1,071.82</b>

Account	12/31/2006 Balance
<b>Bank Accounts</b>	
CD 4667	5,154.71
CD 5148	0.00
CD 5274	0.00
CD 5290	0.00
CD 6480	0.00
CD 6493	0.00
CD 6503	0.00
CD 6586	5,037.84
CD 7020	5,221.51
CD 7309	5,122.10
New Checking	2,987.91
TC NMRA - Checking	0.00
<b>TOTAL Bank Accounts</b>	<b>23,524.07</b>
<b>Cash Accounts</b>	
Petty Cash	25.00
<b>TOTAL Cash Accounts</b>	<b>25.00</b>
<b>OVERALL TOTAL</b>	<b>23,549.07</b>

Paymaster by Jack Boren

In Memoriam - Bruce J. Walthers, 1919-2007

Bruce Walthers Passes on January 28, 2007

It is with great sadness that I must tell you that my Father, Bruce

Walthers, Chairman of Wm. K. Walthers, Inc. passed away on Sunday

morning.

His leadership, insights, and wisdom will be sorely missed.



[Tony Bowen](#) : Michael McLain This happened last week on the Railroad overpass I-15 between Capital Interchange and Cedar Street in Helena, MT. The deer jumped off the overpass and landed on top of a boxcar in the Helena Yard. This is quite unusual and something you don't see every day.



# General@lists.nmra.org

is a general discussion list that exists for the sharing of model railroad, railroad information and Association matters pertaining to the interests of NMRA members. It is a closed list open to NMRA members only. The member's first and last name and NMRA Member Number are required for joining. General@lists.nmra.org is not an official 'Question and Answer' list and all responses are to be considered opinions of the sender and not official NMRA positions, unless so stated by someone with the authority to do so.

As this list exists to further communications between members from all levels and parts of the NMRA, the exchange of information about the promotion of the hobby and the NMRA is encouraged.

The NMRA is a family oriented organization. Spam, flame wars, personal attacks, posting of knowingly false and/or defamatory matter or other abusive or offensive behavior will not be tolerated.

Moderators can suspend or remove members who violate these rules after warnings, but reserve the right to remove members at any time due to excessive behavior.

A moderator has the right to close any topic.

NMRA activities may be promoted here, but sales of commercial (non-NMRA) merchandise is not permitted. Special run merchandise benefiting the national, a region or division may be offered up to three times in a four month period.

All messages are to be signed with the sender's name as list members have the right to know who is speaking. An Alias or Handle is not acceptable.

The NMRA is not responsible or liable for the personal opinions expressed on this list.

Copyrights must be honored. Quotes or excerpts from copyrighted material, under the 'Fair Use' provision of the law, should always credit the source. Photos or drawings not your own, must not be uploaded or shared without the explicit permission of the owner or copyright holder.

To send mail to the list, send mail to: general@lists.nmra.org

To be removed from this list, send a message with a body of ``unsubscribe" (without the quotes) to:

general-request@lists.nmra.org

An archive has been established for the list. A username and password has been established for the mailing list archives. The mailing list archives can be found at <http://lists.nmra.org>.

To access the web archives, the username is `nmra' (lower case, no quotes), and the password is `mrisfun' (lower case, no quotes, mnemonic: ``Model Railroading is Fun")

# LAWRENCE MODEL RAILROAD CLUB

All Aboard!

# 6 IS READY TO BOARD  
PASSENGERS

**Model Railroad Show  
& Swap Meet**

**Saturday, Feb. 24, 2007**  
9 am to 5 pm



**Douglas County  
Fairgrounds  
Building 21  
Lawrence, Ks.  
2120 Harper Street**  
Two blocks North of K10 on Harper

*Stop Look and Listen!  
Model contests for:  
Best locomotive, Best steam  
engine, rolling stock, and  
structure.*



**Adults \$3 – Kids 12 and under FREE with paid Adult**  
**\$1.00 off of admission with the donation of canned food item.**

<b>Features:</b>	<b>Model contest</b>	<b>Train vendors &amp;</b>
	<b>Train layouts</b>	<b>Food &amp; drinks</b>

**Fun for the entire family**



# LAWRENCE MODEL RAILROAD CLUB

## ALL ABOARD!

# 6 IS READY TO BOARD PASSENGERS AT GATE 21



## Model Railroad Show & Swap Meet Saturday, February 24, 2007 - 9 am to 5 pm

Douglas County Fairgrounds. Building 21, 2120 Harper Street, Lawrence, Kansas  
2 blocks north of K10 on Harper

**Adults \$3 – Kids 12 and under FREE with Adult**

With the Donation of a canned food item, \$1.00 off of the admission

Operating club train layouts in HO and N scale.

A model contest with the peoples choice judging: Diesel,  
Steam, rolling stock, and structures categories.

Access to Fair Grounds area will be Friday, February 23 after 1:00 PM through Saturday, February 24<sup>th</sup>. at 7:00 PM.

Vendor Name: \_\_\_\_\_

Email address: \_\_\_\_\_  Preferred contact choice

Contact Name: \_\_\_\_\_

Contact Address: \_\_\_\_\_  Preferred contact choice

Contact City, State, Zip: \_\_\_\_\_

Day Phone: \_\_\_\_\_ - \_\_\_\_\_ - \_\_\_\_\_  Preferred contact choice Evening Phone: \_\_\_\_\_ - \_\_\_\_\_ - \_\_\_\_\_  Preferred contact choice

Returning vendor Registration prior to Monday, February 12, 2007: \$15.00 per table

New Vendor Registration prior to Monday, February 12, 2007: \$20.00 per table

Late Vendor registration after Monday February 12, 2007: \$25.00 per table

Number of 8 foot tables needed: \_\_\_\_\_ Total due: \_\_\_\_\_

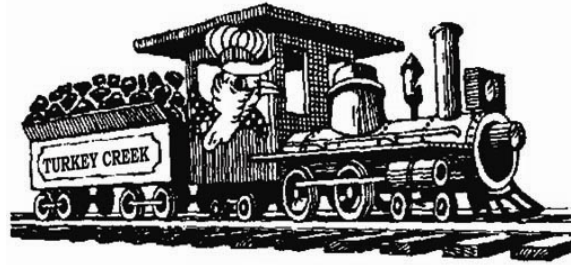
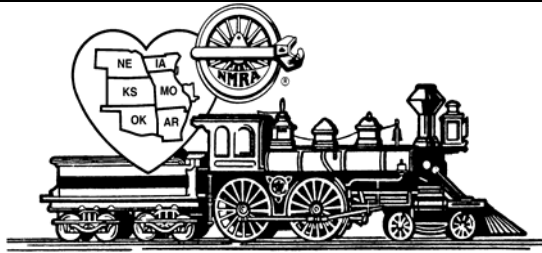
Make Check Payable to: **Lawrence Model Railroad Club**

Send To: Show Coordinator: Jim Taylor 255 N. Michigan # 5-25 Lawrence Ks. 66044

Phone: 785-841-6256 or email: jimforegolf@hotmail.com

## Fun for the entire family





## Mid-Continent Regional Convention/Turkey Creek Show August 4, 2007 Lenexa Community Center 13420 Oak, Lenexa, KS (Pflumm & Santa Fe Drive)

### Activities planned for this year's meet include:

- o **Clinics** – a full slate of clinics covering many aspects of the hobby.
- o **Model & Photo Contests** – by NMRA judging and Poplar vote. *Each model (up to a maximum of 5 models) you enter in the model contest will automatically qualify you to be entered in a special drawing to receive a \$50.00 gift voucher.* Light Iron Narrow Gauge Award for the best narrow gauge entry; Special Youth Award for the best overall youth model entry.
- o **Door Prizes** – Additional door prizes will be set aside for advance registrants.
- o **Display Layout and Layout Tours** – In addition to the display layout at the meet, several local modelers will be opening their homes to layout tours in the afternoon and evening. Layout tour maps will be available for collection with your registration.
- o **Swap Tables and Railroad Groups** – Expect to find more than 70 tables from area dealers, local hobbyists and other railroad groups. For information on tables contact Robert Jefferis [Jeffboj@everestkc.net](mailto:Jeffboj@everestkc.net).
- o **Food and Refreshments** – Scout Troop 92 will have food and refreshments available during the show.

### Mid Continent Regional Convention / Turkey Creek 2007 Division Meet Registration Form

Advance Registration: \$4.00    Full Registration: \$6.00 (\$5.00 NMRA member) at door  
Children under 12 free with paid registration

	Advance Registration (\$4.00)	No. Registration	Total Cost
Name:			
Address:			
City			
State Zip			
Telephone #:		Total Enclosed:	
E-Mail Address:		Scale Modeled	
More Registrant Names:			

Make Checks Payable to: "Turkey Creek Division"  
Mail to: Mid-continent Regional Convention 2007, C/o Frank Ciccarella, 6403 W. 158 St.,  
Overland Park, KS 66223-3582





# 13TH ANNUAL TRAIN SHOW

**SPONSORED BY THE NEBRASKA WEST-CENTRAL DIVISION OF THE  
NATIONAL MODEL RAILROAD ASSOCIATION**

**LOCATION: D&N EVENT CENTER**

**501 East Walker Road**

**North Platte, Nebraska**

**APRIL 21st AND 22nd, 2007**

**HOURS: 9:00 A.M. - 5:00 P.M. SATURDAY THE 21st**

**AND 10:00 A.M. - 4:00 P.M. SUNDAY THE 22nd**

**ADMISSION: \$3.00, CHILDREN UNDER 12 \$1.00,**

**(under 5 with paid adult free)**

**TRAIN LAYOUTS AND DISPLAYS,**

**VENDOR TABLES SELLING RAILROAD ITEMS**

**NOTE TO VENDORS: TABLES ARE \$10 EACH UNTIL APRIL 1ST, AFTER APRIL 1ST THEY ARE \$15**

**UNION PACIFIC TOURS WILL BE AVAILABLE AS AN EXTRA FARE**

**ITEM (Saturday only)**

**FOR ADDITIONAL INFORMATION CONTACT:**

**Gene Tacey**

**P.O. Box 485**

**Sutherland, NE 69165**

**308-386-2489**

**taceys@gpcom.net**





## GARY'S SWITCHING LIST

The Switching List contains all known Mid-Continent Region, NMRA, train shows and Division meetings. It also lists all known club shows and swap meets in the Mid-Continent Region (IA, IL, MO, AR, NE, KS, OK). To list your event, send it to: [garyonho@cox.net](mailto:garyonho@cox.net), or Gary Hemmingway, 3201 SW Stone Ave., Topeka, KS 66614. To subscribe, or unsubscribe, to The Switching List send an email to the above link. Look for us on the MCoR web site: [www.mcor-nmra.org](http://www.mcor-nmra.org).

**KANSAS CENTRAL DIVISION** meets the 1<sup>st</sup> Saturday of even numbered months at various locations around the division area. This is a new schedule for 2007. BOD meetings are usually at noon and general meetings are at 1 p.m. For the full schedule check the MCoR website or email Gary Hemmingway: [garyonho@cox.net](mailto:garyonho@cox.net). The first two 2007 meetings are:

February 3, 2007: Tom Katafiasz: 2105 Northwood Ln, Salina, KS: Turn off Interstate 70 south on Ohio Street, Turn Left (East) on Iron Street and go to top of hill, turn Right (South) on Marymount Road go past the stop light, turn left (East) on Northwood (first street past stop light) Tom's house is on the corner (first one on your left (north)) once you turn onto Northwood, [tommmarykat@aol.com](mailto:tommmarykat@aol.com) or 785-827-8167.

April 7, 2007: Richard Napper, MMR: 7244 NW US Highway 24, Topeka, KS 66618-5605: Richard's house is the third house West of Channel 27 KSNT TV on the North side of the Highway and his house is the only one that sits at an angle to the Highway on the North side of the Highway. Coming from the West on U.S. 24 it is 3.7 miles from the corner Shell gas station in Silver Lake, KS.

**GATEWAY DIV. (ST. LOUIS, MO)** meets 3rd Monday each month, 7:00 P.M. Odd numbered months: Trinity Lutheran Church, 14088 Clayton Road at Woods Mill Rd (Hwy 141), Ballwin, MO; Even numbered months: VFW Hall, O'Fallon, IL <http://www.gatewaynmra.org/division.htm>

**TURKEY CREEK DIV. (KANSAS CITY, MO & KS)** monthly meetings 4th Tuesday, 7:00 P.M. Johnson County Offices, NE Branch, 6000 Lamar, Shawnee Mission, KS (DMV Building on SW corner of Lamar and Martway)

**WESTERN HERITAGE DIVISION (OMAHA, NE / COUNCIL BLUFFS, IA)** Our meeting location is the Sump Library, 84th and Second Streets, Papillion, NE on the 2nd Saturday of each month from Noon to 3:00 pm. The meetings consist of a business meeting followed by a clinic, slide show, and sometimes a layout tour. During the months of June and December we do not meet at the library, they are reserved for the annual picnic (June meeting) and the annual holiday dinner (December meeting).

### **EASTERN IOWA DIVISION**

Contact Allen Merta, Superintendent, (319) 393-2990, or visit our web site at [www.TheWigWag.org](http://www.TheWigWag.org) for information.

**KATE SHELLEY DIVISION** meets monthly on the fourth Thursday of each month 7:00 p.m. at the St. Paul Lutheran Church, 15<sup>th</sup> & Wilson, Ames, IA.

**INDIAN NATIONS DIVISION** meets at the New Hardesty Library at 8316 E. 93rd. St. (Just east of Memorial) in Tulsa, OK. The time is from 9:30am to 12:30pm. The dates and themes for each meeting in 2007 are: Jan 20 - What did Santa Bring? March 31 - Locomotives, May 26 - Rolling Stock, Sept. 15 - Photography, Nov. 17 - Structures/Dioramas. Each meeting we have various presentations from clinics to slide shows. After the meetings we have a layout tour of one of the member's layouts. Contact Dave Salamon at [drs\\_rr@yahoo.com](mailto:drs_rr@yahoo.com) for further information.

**CLAREMORE & SOUTHERN RR OPERATING SESSION**, 2<sup>nd</sup> Friday each month starting at 7:00PM and finishing by 10:00PM, 9372 E. Clover Creek Drive, Claremore, OK 74017-1487, Info: George F Maulsby, 918-341-9446 or [www.csrailroad.com](http://www.csrailroad.com). For your calendar planning our schedule for remaining 2006/7, is as follows:

January 13 1:00PM-4:00PM

February 10 1:00PM-4:00PM

Please RSVP approx. a week before each scheduled operations session. Thanks. George F Maulsby, Claremore & Southern RR [www.csrailroad.com](http://www.csrailroad.com) 918-341-9446

**FEB 10 - 11, 2007 – WICHITA TRAIN SHOW & SWAP MEET**, Cessna Activity Center, 2744 George Washington Blvd., Wichita, KS, (1 block South of Oliver on George Washington Blvd, near the West gate to McConnell AFB), sponsored by Chisholm Trail Div., MCoR, NMRA and Engine House Hobbies. Berry Karlberg WATCO Safety Dept. will give a live clinic on how to model a shortline. Swap tables, Modular layouts, Switching contest, Pulling contest, Model contest, Photo contest, clinics and more. Admission: \$6.00 for both days, Under 10 free with paid adult. Table Registration: Six foot tables are \$20.00 each, Eight foot tables \$25.00 each; Before 12/31/06 take 10% off. Send table registration to WTS&SM 603 Chestnut Halstead, KS 67056-2302. Info: John LaRoe, Engine House Hobbies, 2745 Boulevard Plaza, Wichita, KS 67211, 800-586-4443, [john@ehh.kscoxmail.com](mailto:john@ehh.kscoxmail.com) Or Phil Aylward 603 Chestnut Halstead, KS 67056 email: [aylward1@cox.net](mailto:aylward1@cox.net)

**FEB 10, 2007, THE DUPO SHOW YEAR 2007**, Dupo High School Gymnasium, Dupo, Illinois 10 am to 3 pm. Sponsored by DCHS and Reynolds Railways 17th year!

**FEB 24TH 2007, LAWRENCE MODEL RAILROAD CLUB SHOW AND SWAP MEET**, Douglas County Fairgrounds Building #21, 2120 Harper St., Lawrence, KS, 9 am to 5 pm, Adults \$3 (\$1 off at door with the donation of canned food item.) Kids 12 and under FREE. Returning vendor Registration prior to Monday, February 12, 2007: \$15.00 per table. New Vendor Registration prior to Monday, February 12, 2007: \$20.00 per table. Late Vendor registration after Monday February 12, 2007: \$25.00 per table, Contact info: Jim Taylor, 785-841-6256 or [jimforegolf@hotmail.com](mailto:jimforegolf@hotmail.com).

**FEB. 24, 2006, 4TH ANNUAL GREAT NORTHWEST ARKANSAS MODEL TRAIN SHOW**, Clarion Hotel & Convention Center, Bentonville, AR, info: 479-855-3250 or 479-426-1544 email: [w5mth73@cox.net](mailto:w5mth73@cox.net)



# BURLINGTON ROUTE HISTORICAL SOCIETY IS COMING TO KANSAS CITY

The 2007 Annual Meeting of the Burlington Route Historical Society will be held in the Greater Kansas City area. The Society last held its convention in Kansas City 12 years ago. "The restoration of Union Station was a big selling point," said Dennis Owens, a Society member who will chair the convention. The Midland Railroad in Baldwin, Kansas, the BNSF training center at the Johnson County Community College in Overland Park, Kansas, and the concentration of National Model Railroad Association Master Model Railroaders in the Kansas City area were also positive factors.

The event will take place September 13 through September 16, 2007, at the Doubletree Hotel on College Boulevard in Overland Park, Kansas. The B.R.H.S. annual meeting includes visits to prototype activities, clinics, lectures, spouse tour, swap meet, model competition, and layout tours. A visit to Union Station and its Rail Experience will be a highlight.

Dennis Owens, a member of Mo-Kan Railjoiners and Turkey Creek, is asking for help in making this convention a success.

- Can you serve as a model contest Judge?
- Would you like your layout to be on the tour, either Thursday or Friday night?
- Could you give a presentation on, say, the Hannibal Bridge?
- Do you have a slide show on Kansas City railroad history?
- Would you present a clinic on some aspect of Model Railroading?
- Could your business contribute an item for goodie bags for those attending?

**Must urgently, if you have worked in coordinating a railroad convention or meet in the past, would you be willing to serve as an advisor, coach, and mentor to the Kansas City Host Committee for this event?**

If so, please contact Dennis Owens: day- (816-474-3000), evenings- (816-931-1800), cell- (816-729-4252), email [owensappeal@aol.com](mailto:owensappeal@aol.com) or see him at a meeting.

## George Filkins

Long time member and friend of both Mo-Kan RailJoiners & Turkey Creek passed away on Jan 6, 2007. He was born in Osage City, KS & lived all his life in this area.

I have known both George & Mary (his wife) for over 20 years. He was an active member of the Modular Group & always showed up with his pickup & trailer to haul the Modulares where ever we needed them.

George was an excellent modeler; he could take a piece of wood or plastic & create beautiful models. They were so good they are still on display at the in airport in Gardner, Ks.

George & Mary opened their home at anytime to show their RR during the National Convention in K.C. They had over 327 people from 42 states and 5 foreign countries to see their layout.

It is rumored that George built the top floor of his house to have room for his R.R.

George's R.R. was very unique! All of the rolling stock is private line R.R. Cars. The equipment was given by his many friends.

His personal line was the Sycamore Valley Line. He gave Sycamore Valley Line cars to anyone that would come over and operate.

George was a personal friend of mine for over 20 years so I and all our R.R. friends will really miss him.

George was 80 years young,

Chuck Heying



## To All Turkey Creek Members:

At the September 26, 2006 meeting, we voted on the subscription rate for one year for the Lightning Slinger to be mailed to members. The price chosen was \$12.00 per year beginning in January, 2007. The payment for your subscription must be in by December 18, 2006 to receive the Lightning Slinger by mail for 2007. Please fill in the information below and mail it back with a check if you want to receive it by mail. If you would like it by e-mail, please e-mail confirmation to [l-seibel@comcast.net](mailto:l-seibel@comcast.net).

### I would like to receive the Lightning Slinger:

By E-mail – *no charge* E-Mail Address: \_\_\_\_\_

From Website Only – *no charge go to* <http://www.mcor-nmra.org/Divisions/TurkeyCreek/TC-Library.html>

By Mail - \$12.00 per year subscription – Make check payable to **Turkey Creek**

### Make check payable to Turkey Creek

#### Send to:

**Louis Seibel  
Clerk Turkey Creek Division  
1069 N Logan  
Olathe, KS 66061**

The address on my label is ok. If not, please name changes below:

Name: \_\_\_\_\_

Address: \_\_\_\_\_

City/ST/Zip: \_\_\_\_\_

### Turkey Creek Meeting Dates for 2007

**February 27 Overland Park Community Center**

**March 27**

**April 24**

**May 22**

**June 26**

**July 24**

**August 4 Turkey Creek Meet**

**Lenexa Community Center**

**September 25**

**October 22**

**November 27**

**December 18 the Third Tuesday**

All meetings start at 7PM.

All meetings except the February and August meetings will be held at:

Northeast Johnson County Offices

6000 Lamar

Mission, Kansas



This space could be

your's

And it

would be for

A P

Points.



**TURKEY CREEK DIVISION**  
4954 Marsh Avenue  
Kansas City, MO 64129-2111



**FIRST CLASS MAIL**  
**ADDRESS SERVICE REQUESTED 4955**

[mcor-nmra.org/divisions/turkeycreek/](http://mcor-nmra.org/divisions/turkeycreek/)

**TURKEY  
CREEK  
DIVISION  
MEETING**

**7:00 P.M. February  
27, 2007**

Overland Park  
Community Center  
87th & Lamar  
Room 205  
Overland Park, KS

February 27 Overland Park  
Community Center  
March 27  
April 24  
May 22  
June 26  
July 24  
August 4 Turkey Creek Meet  
Lenexa Community Center  
September 25  
October 22  
November 27  
December 18 the Third  
Tuesday

