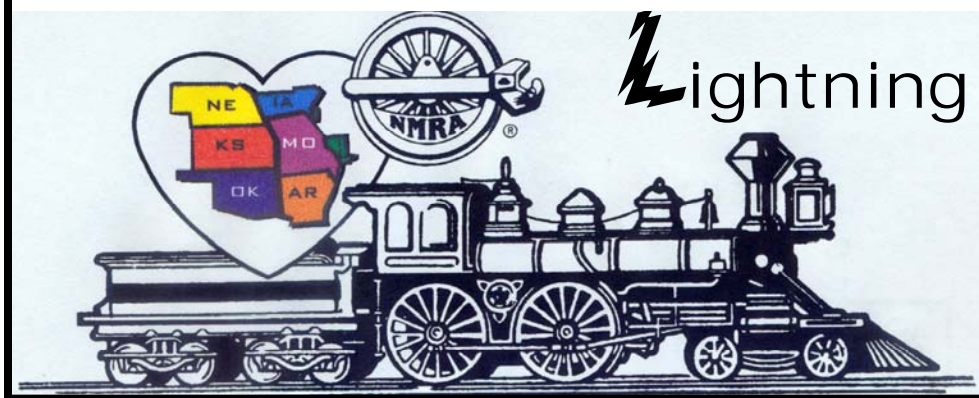


Turkey Creek Division



Lightning **S**linger

VOL. 21 NO. 6

"For all gauges and all ages"

June 2008

MONTHLY PUBLICATION OF THE TURKEY CREEK DIVISION
OF THE MID-CONTINENT REGION, NMRA

2008 Turkey Creek Division Modeling Challenge Is Now Here

Turkey Creek Division Meeting
June 23rd at 7PM
Johnson County Northeast Offices

Clinic
Turkey Creek Division Show
August 2, 2008
Don't Forget Advance Registration is Only \$4

Happy Fathers Day



From THE SUPER'S DESK....

Hello everyone!

6th Annual KCNG Narrow Gauge Meet An invitation to all Narrow Gaugers (and all other Model Railroaders),

The Kansas City Area Narrow Gaugers (KCNG) will host their 6th Annual Narrow Gauge Meet on Saturday, June 21, 2008. The meet will be held again at the Antioch Branch of the Johnson County Library at 8700 Shawnee Mission Parkway, Merriam, Kansas. To get there, take the Shawnee Mission Parkway exit east from I-35 to Antioch (about ¼ mile), turn left on Antioch, and then turn left again into the library.

The fun will begin at 9:30 am with registration and socializing. We will have two live clinics in the morning.

A lunch will be provided at noon. A Show-and-Tell session will be held after lunch. Please bring something to display and share with the group. You will get \$1 of your registration refunded if you bring something. We will then have two narrow gauge layouts available to visit during the afternoon. Layouts will include Pat Harriman's (MMR) Oregon Coast Mining & Timber Co. (HOn3) and Shelly Levy's San Juan & Tellurton RR (On3). Meet activities will wind down at about 5:00 pm.

The clinics will include:

Marty Vaughn, MMR: Modeling Water.

Larry Alfred, MMR: Detailing a Blank Wall.

Cost: \$8.00 (includes morning donuts/coffee and lunch).

Bring a model for Show and Tell and get \$1 back.

Advance registrations are required by June 16, 2008, so that we can plan for lunch. Mail registration with your check to:

Larry Alfred

14633 S. Chalet Drive

Olathe, KS 66062

Make checks payable to Larry Alfred

For anyone considering coming in from out of town on Friday night, please let us know that in advance. We will meet for our traditional Friday night barbeque dinner at Jack Stack restaurant for any that may be interested.

It should be a great day to share narrow gauge modeling and conversation. You are all invited to participate!! Email me off line

(lalfred2@comcast.net <<mailto:lalfred2@comcast.net>>) if you have questions.

Hope to see you on June 21.

Kerry Lindenbaum,



Heart of America Garden Railway Show

June 20 ~ 22, 2008

Overland Park Int'l Trade Center

115th & Metcalf

Overland Park, KS

Vendors

Manufacturers Exhibits

Layout Displays

**A Train Show exclusively for
Garden Scale Railroading,
with fun for the entire family!**



for more information, visit us on-line at

www.hagrs.com

Heart of America Garden Railway Show

P. O. Box 296 • Grandview, MO 64030



Garden Rails in the Heartland



Turkey Creek Division

Minutes May 26, 2008

Kerry Lindenbaum called the meeting to order at 7pm. He asked if there were any visitors. There was one Bob Davis who is a member of the Heartland N- Track Club.

The next thing was the AP program. Joe Robertson MMR has some to be given out Gary Gilroy received his Gold Spike; Gary Hankins had been out of town and received three more AP certificates Master Builder Structures, Electrical and Chief Dispatcher; and Paul Myers MMR received Chief Dispatcher.

Next was a report from Larry Alfred MMR on the Mid- Con Regional Convention in Branson in May. Larry said that the convention was very good with over 90 Registrations and 100 for the Banquet. The clinics were very well attended members of the division that gave clinic were Marty Vaughn MMR, Larry Alfred MMR, Paul Richardson MMR, Fran & Miles Hale MMR, and Pat Harriman MMR. At the Banquet Louis Seibel was awarded the Larry Long MMR Memorial Award in recognition of his dedicated service to the region and division for 2008

Louis Seibel brought up the up and coming events in the division's area Garden railway Tour June 7 & 8, Heart of American Garden Railway Show June 20-22, Union Pacific Historical Society Train Show and Swap Meet July 25 & 26, Turkey Creek Division Show August 2, and the Union Station Train show September 27 & 28. Louis said that the division had a table at the show on June 20-22 and that we needed members to work the show. Larry Alfred MMR also said that the 6th Annual KCNG Narrow Gauge Meet would be held on June 21. Information on all these events all listed in this months LS.

Next was the clinic by Robert Jefferis on The Anatomy of a Steam Locomotive. It was very informative on how the steam engine works

Next meeting is June 24th. The Fifth Annual TCD Modeling Challenge will be held.

Meeting was adjourned

Respectfully
Louis Seibel

On a sad note Charles Fennen son Josh was one of the four Boy Scouts that died in the tornado that hit the Little Sioux Scout Camp on June 11. Charles was the chairman for the MCoR convention in Council Bluffs. Our thoughts and prayers are with Charles and his family. There is a short news article on this in the LS. Division will have a card and will take donations towards a memorial fund for Josh at the June meeting.

Memorial donations may be sent to either:

Josh Fennen Memorial Fund, c/o Streamliner Credit Union, 1400 Douglas St., STOP 0040, Omaha, NE., 68179.

Boy Scouts of America, Mid-America Council, 12401 West Maple Road, Omaha, NE 68164.

Please designate the Scout Tribute Fund in honor of Josh Fennen.

Respectfully
Louis Seibel, Clerk

OFFICERS

Superintendent
Kerry Lindenbaum
NMRA LM 5767
913-648-8201
kcc@everestkc.net

Paymaster
Jack Boren
913-962-2408
mccjbcmd@mindspring.com

Clerk
Louis Seibel
913-393-3495
l-seibel@comcast.net

Division Director
Brad Morneau
913-897-0669
bmorneau@kc.rr.com

Train Show Chairman's for 2008
Louis Seibel 913-393-3495
L-Seibel@comcast.net

Membership Chair Editor
Gary Hankins
913-782-3645
marlysdee@aol.com

LS Editor
Ted Tschirhart 816-861-3449
tedtschi@kc.rr.com
Louis Seibel
Nancy Chapman

AP Merit Awards and Achievement
Joe B. Robertson, MMR
816-331-2773
piperval@aol.com

Web Master
Paul Myers, MMR 816-734-3719
Paulwmyers@kc.rr.com

Web
<http://www.tc-nmra.org>.
TURKEY CREEK DIVISION
IS A 501(C)(3) ORGANIZATION



6th Annual KCNG Narrow Gauge Meet

An invitation to all Narrow Gaugers (and all other Model Railroaders),

The Kansas City Area Narrow Gaugers (KCNG) will host their 6th Annual Narrow Gauge Meet on Saturday, June 21, 2008. The meet will be held again at the Antioch Branch of the Johnson County Library at 8700 Shawnee Mission Parkway, Merriam, Kansas. To get there, take the Shawnee Mission Parkway exit east from I-35 to Antioch (about ¼ mile), turn left on Antioch, and then turn left again into the library.

The fun will begin at 9:30 am with registration and socializing. We will have two live clinics in the morning. A lunch will be provided at noon. A Show-and-Tell session will be held after lunch. Please bring something to display and share with the group. You will get \$1 of your registration refunded if you bring something. We will then have two narrow gauge layouts available to visit during the afternoon. Layouts will include Pat Harriman's (MMR) Oregon Coast Mining & Timber Co. (HOn3) and Shelly Levy's San Juan & Tellurton RR (On3). Meet activities will wind down at about 5:00 pm.

The clinics will include:

Marty Vaughn, MMR: Modeling Water.

Larry Alfred, MMR: Detailing a Blank Wall.

Cost: \$8.00 (includes morning donuts/coffee and lunch). Bring a model for Show and Tell and get \$1 back.

Advance registrations are required by June 16, 2008, so that we can plan for lunch. Mail registration with your check to:

Larry Alfred

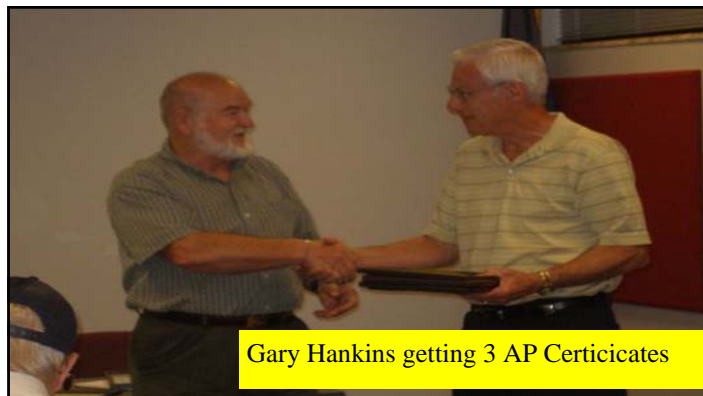
14633 S. Chalet Drive

Olathe, KS 66062

Make checks payable to Larry Alfred

For anyone considering coming in from out of town on Friday night, please let us know that in advance. We will meet for our traditional Friday night barbeque dinner at Jack Stack restaurant for any that may be interested.

It should be a great day to share narrow gauge modeling and conversation. You are all invited to participate!! Email me off line (lalfred2@comcast.net <mailto:lalfred2@comcast.net>) if you have questions. Hope to see you on June 21.



Gary Hankins getting 3 AP Certificates



Greg Gilroy received his gold spike



Part of a Steam Engine

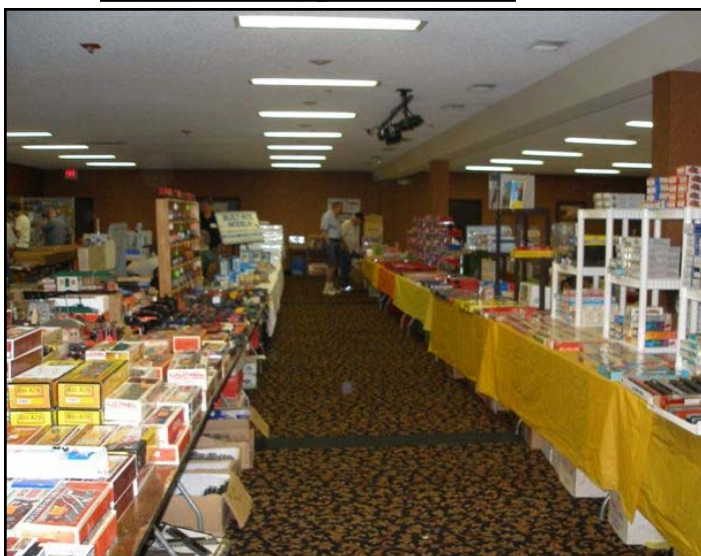


Bob Jefferis giving his clinic on Steam Engines



For more pictures on the Mid-Continent Region Convention in Branson, MO on May 15, 16, 17, and 18 go to this web site:

<http://home-and-garden.webshots.com/album/563605049uPGjOP>





Materials Needed

• Hydrocal or Molding Plaster	• Campbell Plastic Stone Walthers Part # 200-810
• Water	• Rubber Cement
• Rubber Mixing Bowl	• Stirring Sticks
• Wooden Spoons	• Paper Towels
• Base Color of Paint	• Drop Cloths
• Lighter Paint for Mortar	• Drawing of Building Walls
• Styrene Triangle Strips	• Styrene Sheets
• Flat Styrene Strips	• Door & Window Castings
• Styrene Solvent and Brush	• Styrene or Wood - Decking
• NWS Chopper	• Shingles
• Hobby Knife	• Roof Details
• Scale Ruler	• Sandpaper
• Mechanical Pencil	• Signs, Meters, Debris etc
• Plastruct Sheets	

<http://www.purgatoryanddevilriver.com>

















Louis Seibel Receiving the Larry Long, MMR Memorial Award



Marty Vaughn, MMR Receiving His last AP Certificate and Plaque show that he has received all 11 AP Certificates



15th Annual
Water Gardens Tour 2008
Saturday - Sunday
July 12-13, 2008
9am to 5pm
Rain Or Shine
816-861-3449



THE SWITCHING LIST

The Switching List contains all known Mid-Continent Region, NMRA, train shows and Division meetings. It also lists all known club shows and swap meets in the Mid-Continent Region (IA, IL, MO, AR, NE, KS, and OK). To list your event, send it to: garyonho@cox.net, or Gary Hemmingway, 3201 SW Stone Ave., Topeka, KS 66614. To subscribe, or unsubscribe, to The Switching List send an email to the above link. Look for us on the MCoR web site: www.mcor-nmra.org.

DIVISION MEETINGS

KANSAS CENTRAL DIVISION meets the 1st Saturday of even numbered months at various locations around the division area. This is a new schedule for 2008. BOD meetings are usually at noon and general meetings are at 1 p.m. For the full schedule check the MCoR website or email Gary Hemmingway: garyonho@cox.net. The next meeting is:

June 7, 2008 Emporia City Library: 110 East 6th, Emporia, KS. Coming in on interstate turn East on Highway 50, go to Commercial Street (main street going North/South.) Continue east about one block, Library is on your left; the parking lot for library is behind the Museum. All are invited regardless of NMRA membership.

GATEWAY DIV. (ST. LOUIS, MO) meets 3rd Monday each month, 7:00 P.M. Odd numbered months: Trinity Lutheran Church, 14088 Clayton Road at Woods Mill Rd (Hwy 141), Ballwin, MO; Even numbered months: VFW Hall, O'Fallon, IL <http://www.gatewaynmra.org/division.htm>

TURKEY CREEK DIV. (KANSAS CITY, MO & KS) monthly meetings 4th Tuesday, 7:00 P.M. Johnson County Offices, NE Branch, 6000 Lamar, Shawnee Mission, KS (DMV Building on SW corner of Lamar and Martway)

WESTERN HERITAGE

DIVISION (OMAHA, NE / COUNCIL BLUFFS, IA) meets second Saturday (except June and December) at noon. Sump Memorial Library, corner of Washington and Second Streets in Papillion (across from Runza). Visit www.whdnmra.org for more info and a map.

EASTERN IOWA DIVISION

Davenport, Iowa: Eastern Iowa Division Meeting Saturday, February 2, 2008 at 9:00 AM. The meeting will be held at the First Christian Church, 510 East 15th Street in Davenport, Iowa. The agenda for the day will include a short business meeting, a clinic from a BNSF employee on Track Warrants, and tours of two club layouts and two private layouts. All are welcome to attend. Model judging for merit and AP will also be available. For additional information contact the Eastern Iowa Division Superintendent, Rich Mahaney, at 505-640-5909 or hazmatrichm@aol.com

KATE SHELLEY DIVISION meets monthly on the fourth Thursday of each month 7:00 p.m. Meeting location varies call 515-232-8689 or e-mail rfolkmann@mchsi.com for location.

INDIAN NATIONS DIVISION meets at the New Hardesty



A Tornado's Tragic Toll

135-mph Twister Kills 4 Scouts In Iowa; Heroic Moments In Aftermath

LITTLE SIOUX, Iowa, June 11, 2008

[Twister Hits Scout Camp](#)

Little or no warning before tornado hits camp in Iowa, killing four, injuring more than 40.

(CBS/ AP) When the howling winds finally died down, the Boy Scouts - true to their motto, "Be Prepared" - sprang into action.

Putting their first-aid training to use, they applied tourniquets and gauze to the injured. Some began digging victims from the rubble of a collapsed chimney. And others broke into an equipment shed, seized chainsaws and other tools, and started clearing fallen trees from a road.

Dozens of the Scouts, ages 13 to 18, were hailed for their bravery and resourcefulness Thursday, the morning after a tornado with wind speeds upwards of 135 miles an hour, reports **CBS News correspondent Dave Price**, killed four boys and left the Iowa camp unrecognizable.

"There were some real heroes at this Scout camp," Gov. Chet Culver said, adding that he believes the Scouts saved lives while they waited for paramedics to cut through the trees and reach the camp a mile into the woods. The 93 boys, all elite Scouts attending a week-long leadership training session, had taken part in a mock emergency drill with 25 staff members just a day before the twister hit. "They knew what to do, they knew where to go, and they prepared well," said Lloyd Roitstein, an executive with the Mid-America Council of the Boy Scouts of America. Among the dead were: Aaron Eilerts, 14, of Eagle Grove, Iowa, who was known as an outgoing friendly kid who loved Elvis Presley, reports **Price**; Josh Fennen, 13, of Omaha, who was described as creative, confident and a natural leader; Sam Thomsen, 13, of Omaha who was known to love scouting, sports and his church; and Ben Petrzilka, 14, of Omaha, who is said to have enjoyed the outdoors and liked to hunt and fish with his father. Roitstein said all four had taken shelter in a building that was leveled, and all of them were found near its collapsed stone chimney. The governor said the cause of death had not been determined. Scout supervisor Thomas White recalled riding out the storm in a ditch and then running to help.

"It was about five minutes after I was up there that I saw the scouts that had died," White told **Davis**. "But I stayed calm when I was up there cause one thing got to do is stay calm yourself so other people stay calm. Then it goes a lot smoother and people get taken care of and more people survive."

At least a dozen people remained hospitalized Thursday with everything from bruises to spine and head injuries. At the campsite, a pickup truck had been tossed on its side. Tree limbs rested on top of the Scouts' tents. Trees were flattened. And the one-room multipurpose building where the scouts died was a pile of cinderblocks and chimney stones. Boy Scout officials said the campers had heard the severe weather alerts but decided not to leave because a storm was on the way. "They were watching the weather and monitoring with a weather radio, listening for updates," said Deron Smith, a national spokesman for the organization. "The spot they were at was the lowest spot of camp. It was deemed to be the safest place." A group of Scouts who had set out on a hike had returned to the camp before the storm hit, Smith said. On the other side of the state, 3,900 homes were evacuated from flood-stricken Cedar Rapids, where rescuers removed people with boats, officials estimated 100 blocks were under water, and a railroad bridge over the flooded Cedar River collapsed.

In Albert Lea, Minn., 90 miles south of Minneapolis, a man died

Thursday after his vehicle plunged from a washed-out road and was submerged in floodwaters.

Also Thursday, several Kansas communities began cleaning up from tornadoes a day earlier that killed at least two people, destroyed much of the small town of Chapman, and caused extensive damage on the Kansas State University campus.

Meanwhile, tales of heroism emerged from the Iowa camp.

Roitstein said a group of scouts pulled the camp ranger and his family from their destroyed home. Doug Rothgeb of Omaha said his 15-year-old son emerged from a ditch where he had taken cover, then joined other scouts to break into the equipment shed.

Fourteen-year-old Zach Jessen of Fremont, Neb., said that before the storm struck, someone spotted the rotation in the clouds and a siren sounded in the multipurpose building, which had tables and a TV in addition to a fireplace. Jessen said he and others managed to get Scouts out of their tents and indoors just before the tornado hit. According to Roitstein, the Scouts took shelter in three buildings.

Jessen said shortly afterward, the door on the multipurpose building flew open and he heard someone yelling to get under the tables.

"All of a sudden, the tornado came and took the building," Jessen said. "It sounded like a giant freight train going right over the top of you."

Jessen said shortly afterward, the door on the multipurpose building flew open and he heard someone yelling to get under the tables.

Ethan Hession, 13, said he crawled under a table with his friend. "I just remember looking over at my friend, and all of a sudden he just says to me, 'Dear God, save us,'" he said on NBC's "Today" show.

Ethan said the scouts' first-aid training immediately compelled them to act.

"We were prepared," he said. "We knew that we need to place tourniquets on wounds that were bleeding too much. We knew we need to apply pressure and gauze. We had first-aid kits, we had everything. We knew about this, we knew how to do it."

He added: "All of a sudden people started taking action. Like it just clicked. One of the staff members took off his shirt and put it right on the guy who was bleeding and told me to get on top of him so he would stop moving so he could apply pressure and gauze. We started digging people out of the rubble."

The 1,800-acre Little Sioux Scout Ranch is in the Loess Hills in westernmost Iowa, close to the Nebraska line, about 40 miles north of Omaha. The hills rise 200 feet above the plains in what is otherwise an exceedingly flat state. While tornadoes are often associated with flat, open land, Iowa is in Tornado Alley, and forecasters said twisters are not unusual in the Loess Hills.

The camp includes hiking trails through narrow valleys and over steep hills, a 15-acre lake and a rifle range.

Lisa Petry, the mother of 13-year-old Boy Scout Jose Olivo, said she had a bad feeling Wednesday morning when she heard reports of possible severe weather. "I thought, 'Should I call the scout camp and ask if there's severe weather, where will they go?'" she said.

The governor would not address questions about whether the Scouts should have remained at the campground after severe weather alerts were issued.

"There's always lessons learned from any natural disaster, from any tragedy," Culver said. "We need to focus on the victims, the families affected."

Homeland Security Secretary Michael Chertoff toured the camp and said it appeared that the Boy Scouts "didn't have a chance" and that the tornado came through the camp "like a bowling ball."





The First Annual Union Station Model Railroad Show

September 27th & 28th, 2008
Show hours 9am to 5pm

The show is put on by the Union Station Kansas City Model Railroad Society (USKCMRRS).
This organization is made up of Volunteers that help take carry of the Union Station owned model railroad collections and displays

We hope to be able to provide a greater interest in the hobby of model railroading by having this show.

We hope to have a steam engine and other displays outside that weekend.

Inside we will plan to have for the show the Sprint Festival Plaza and the KCP&L Exhibit Gallery.
We hope to have a number of Model Railroad Club layouts, Railroad Historical Societies, Operation Life Save, Manufactures, Vendors and Clinics for this show.

We hope to do advertising for this show with Flyers, Radio, TV, Newspaper ads, Magazines ads, and web sites.

We are also looking of Corporation sponsors for this event.

If interested in being part of this show please fill out the form below.

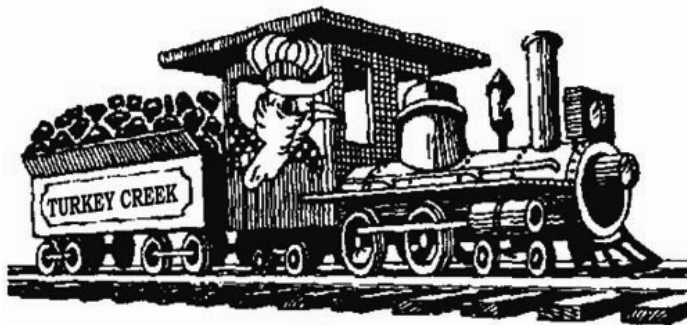
Vendor and Manufactures tables will be \$15.00 for an 8' x 30" table.

Union Station Model Railroad Show Registration Form

Manufactures, Vendors, Historical Societies, and Mode Railroad Clubs
Registration Form

		Tables Costs \$15.00	No. of Tables	Total Cost
Name:				
Address:				
City				
State Zip				
Telephone #:		Total Enclosed:		
E-Mail Address:		Scale Modeled		

Make Checks Payable to:
Union Station Kansas City Model Railroad Society
30 W Pershing Road, Suite 850
Kansas City, MO 64108
913-393-3495 816-861-3449



Turkey Creek Show
August 2, 2008
 Lenexa Community Center
 13420 Oak, Lenexa, KS (Pflumm & Santa Fe Drive)

Activities planned for this year's meet include:

- o **Clinics** – a full slate of clinics covering many aspects of the hobby.
- o **Model & Photo Contests** -By Popular vote with NMRA Achievement Program judging available. *Each model (up to a maximum of 5 models) you enter in the model contest will automatically qualify you to be entered in to a special drawing to receive a \$50.00 gift voucher.* Special Youth Award for the best overall youth model entry 16 and under.
- o **Door Prizes** – Additional door prizes will be set aside for advance registrants.
- o **Display Layout and Layout Tours** – In addition to the display layout at the meet, several local modelers will be opening their homes to layout tours in the afternoon and evening. Layout tour maps will be available for collection with your registration.
- o **Swap Tables and Railroad Groups** – Expect to find more than 70 tables from area dealers, local hobbyists and other railroad groups. For information on tables contact Robert Jefferis at jeffbobj@everestkc.net.

Food and Refreshments – Scout Troop 92 will have food and refreshments available during the show.

Turkey Creek 2008 Division Meet Registration Form				
Advance Registration: \$4.00 ♦♦♦♦ Full Registration: \$6.00 (\$5.00 NMRA member) at door Children under 12 free with paid registration				
		Advance Registration (\$4.00)	No. Registration	Total Cost
Name:				
Address:				
City				
State Zip				
Telephone #:		Total Enclosed:		
E-Mail Address:		Scale Modeled		
More Registrant Names:				
Make Checks Payable to: "Turkey Creek Division" Mail to: Turkey Creek Show, C/o Robert Hollowell, 2013 SE Stratford, Blue Springs, Mo 64014 4047				



Da "Hammer" report

WE HAVE ADDED ONE :0) We have 14 "YES" & 2 "maybe". 2008 Turkey Creek Division Modeling Challenge

by Rusty Rails

Here we go again! For the 5th Annual TCD Modeling Challenge, the theme has been opened up to the max! You may build and enter anything, yes....that's anything, that will fit through the meeting room door! This is the theme voted on by the members attending the modeling challenge meeting last summer.

So, what exactly does this mean for each of you? What it means is that you will now not have any excuse whatsoever for not participating in the event. Let me emphasize here that the Modeling Challenge program was conceived to encourage everyone to participate in the enjoyment of building and displaying railroad models!! Please don't feel overwhelmed, intimidated, or that you don't have time to join in. It is hoped that by participating you will feel a sense of "inclusion", that of being "one of the group."

You may ask yourself, what sort of model could I enter? First, let me make this clarification.....entries need not be constructed especially for this event. If you have something that you built in the past,

please consider entering it. Or, if there is a new project that you have been thinking about starting, now is a good time. You could limit your entry to a single car or locomotive; remember any scale or gauge is acceptable (yes, Warren, you can bring whatever you like!). You could also consider entering your favorite entire train. Alternatively, you could focus on structures and enter a single structure or a full scene, with several buildings. Remember, there is no limit! You might want to build a large or small display or diorama, with basic details or highly detailed. Whichever, this could be an opportunity to build a component of your home layout....to be incorporated into the layout at a later date. Several of the past entries have been used in this way, to a great benefit of the modeler. Possibly, the ultimate entry could be an entire operating layout (albeit, somewhat small.....remember, it has to fit through the door)! This is intended to be a fun filled event, with the entry possibilities only limited by your imagination and enthusiasm to participate.

The judging will be by popular vote, so crowd appeal will be important. The event will take place at our June 24th meeting, so you have five months to prepare your entry. As in the past, there will be **three places awarded for this challenge**, plus awards for the **"Most Creative"** and the **"Most Whimsical"** entries. But, again, I want to emphasize that the participation is the important aspect of this program. So, if you're interested in being involved, start thinking about your model entry now. There is plenty of time, but don't put it off. This will be another fun event!

PLEASE....no excuses...let's go for it!!!!

This



years
MODELING CHALLENGE

happens on

June 24, 2008

Please join in on the fun and

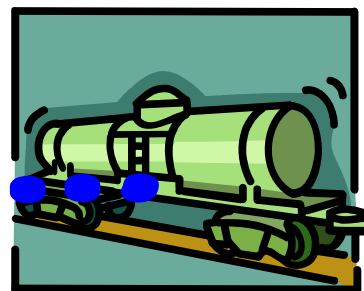
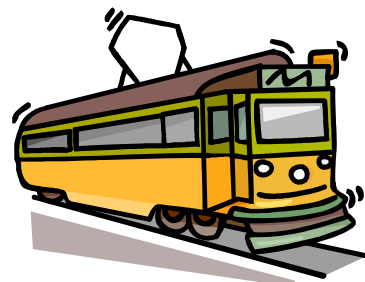
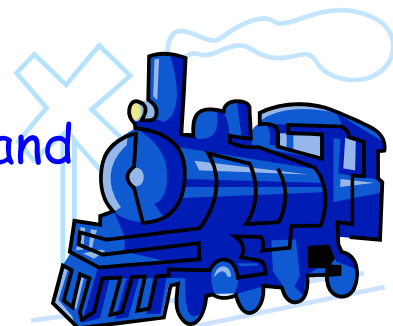
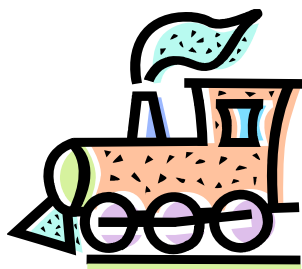
BUILD...
BUILD...
BUILD...
BUILD...

BUILD...

BUILD...

BUILD...

BUILD



From hereon out I will be sending a **"MODELING CHALLENGE"** update every other week for now...:0)
Drop me an e-mail and let me know if you will be joining the fun this year and what scale you will be modeling.

- 1.) Pat Harriman, MMR... yes... 'HO' Scale
- 2.) Larry Alfred, MMR... Yes... 'O' scale
- 3.) Ron Morse, MMR... yes... 'HO' Scale
- 4.) Brad Morneau... yes... 'HO' Scale (roundhouse)



- 5.) Larry Diehl... **yes... 'HO' Scale**
- 6.) Paul Richardson, MMR... **yes - Scale to be determined**
- 7.) Douglas G. De Berg... **yes** ...I'll be bringing either a 1 1/2" scale way car that's presently under construction or a kit bashed rock crushing plant in HO or a Diesel House I'm now building also in HO.
- 8.) **steve Mckee... Yes..** I will bring a On3 model to the challenge.
- 9.) Jack Ferris... **YES..** Either something in 1:48 and/or 1:24 scale.
- 10.) Marty Vaughn, MMR... **yes... 'n' scale**
- 11.) Louis Seibel... **YES... 'HO' Scale**
- 12.) TOM STOLTE... **maybe...**
- 13.) Chase McCutcheon... **YES..** White Pass and Yukon ALCO DL535E, or a GEX3341.
- 14.) kerry lindenbaum..... **maybe...** If I model anything it will be a N-Track Module.
- 15.) Bob Hollowell... **yes... 'HO' Scale**
- 16.) Shelly LevY... **yes... 'on3' Scale..** I'll bring an On3 Blacksmith shop.
- 17.) Peter Ellis.... **not able to this year**
- 18.) FRAN HALE...
- 19.) Steve Newland....
- 20.) Jack Rosenfield
- 21.) Jim Flynn...
- 22.) Gary Hankins...
- 23.) Bill Craig...
- 24.) Warren Weston, MMR... I regret that I ran out of timber for my entry. In my broad search for materials, I have not found a source for the correct size and shape or quantity that is needed for my miniature model entry. I may be able to finish it in time for a future meet.
- 25.) CHUCK HEYING, MMR...
- 26.) John Breau...
- 27.) Dean Windsor, MMR...
- 28.) Gary Davidson....
- 29.) Fred Hulen ...
- 30.) Roger Quinlan...
- 31.) Bob Bayley...
- 32.) Paul Myers...
- 33.) Dave Eisenstein
- 34.) Pete Bellos, MMR
- 35.) Bob Jefferis...
- 36.) Mike Fyten...
- 37.) Dave Engle
- 38.) MILES HALE, MMR...
- 39.) Bob Miller, MMR
- 40.) Dave Jacobs
- 41.) Jack Boren...
- 42.) Lon Johnson
- 43.) RICK MCCLELLAN, MMR
- 44.) Bill Humenczuk
- 45.) Bill Hirt
- 46.) Wm. B. Alpert
- 47.) Dr. James Budde
- 48.) Charles R. Hitchcock, MMR
- 49.) Keith Jordan
- 50.) David E. Lindquist
- 51.) Mike Porter
- 52.) TED Tschirhart
- 53.) CHARLES STAPLETON, MMR
- 54.) STEVE PRIEST, MMR
- 55.) Joe Robertson, MMR...

Ron Morse, MMR

Ron Morse, MMR
Morse Productions
rdmorse1@juno.com
<http://morseproductions.blogspot.com/>



UPHS Conventions

This page will tell you about UPHS Conventions and Activities.

**The 24th Annual Convention will be held in
Topeka, KS**

July 23 - 26, 2008

Capitol Plaza Hotel, rooms \$89.

[CLICK HERE for the Registration Form](#)

**The 25th Annual Convention will be held in
Cheyenne, WY**

July 9 - 12, 2009

Little America Hotel

**Additional information will be posted here as it
is available.**

General Notices

Updated April 12

(scroll to bottom for updates)

The \$89.00/night hotel rate is good from Sun Jul 20 to Sun Jul 26.

The Topeka Blvd. Bridge is still under construction and may not be open before start of the convention. Please be aware of posted detours

if you are coming into town via I-70.

The tour schedule for Wed Jul 23 is in place. We will depart the hotel at 10:00 AM for PTMW Metal Fabrication to see how signal houses are made.

For lunch, the buses will be parked in a location central to several places to eat within a 2 block walk. From there, we head to the BNSF shops for a 1:00 PM arrival. We then go next door to Gunderson Rail Services where they repair well cars.

PLEASE NOTE THESE FOOTWEAR REQUIREMENTS!! BNSF requires that all visitors wear steel toed boots. If you have them, please wear them. If you don't, please wear some sort of other work boot. Steel toe caps will be provided, as will hard hats and safety goggles. This is a heavy duty maintenance/repair area so we will be expected to follow all safety rules.

In addition to proper footwear, this includes **NO SHORTS OR SKIRTS**. The UPHS strongly encourages you to wear jeans or other clothing suitable for this environment.

For the Thu Jul 24 bus tour to Marysville and Jeffery Energy center, steel toed boots will not be required but the usual requirements of no open toed shoes or shorts/skirts will be in place. When packing, please keep these things in mind!

The traditional swap meet will be a full blown, 2-day train show on Fri Jul 25 and Sat Jul 26. We expect to have several outside vendors

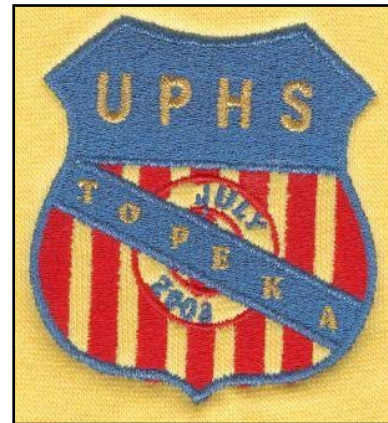
participating in addition to our own Society members.

Banquet entrees will be flat iron steak, chicken cordon bleu and maple lacquered salmon. Please indicate your preference of beef, chicken or fish on your registration form. There will be a wide selection of things to choose from at the dessert bar.

If you will be arriving in Topeka via Amtrak and need transportation between the station and the hotel, please let us know on your registration form. We will contact you about arrangements to pick you up.

**The convention polo shirts will feature variations
of these designs:**

Front pocket



[Apr 12]

Buses for the Wednesday tours will depart the hotel at 9:30 AM, possibly as early as 9:00.

The Marysville tour stop will include time to watch and photograph trains coming into the yard from the north. We may be able to get a brief tour of the area if operating conditions allow.

The train show / swap meet will start at 8:00 AM on Friday. From 8:00 to 10:00 it will be open to convention attendees only. At 10:00, the general public will be admitted. Your registration fee includes admission to the train show anytime over the weekend.

UPHS Conventions



INTERMODAL 101

Text and Photos (except where noted) by:
Rich Mahaney, Superintendent, Eastern Iowa Division/NMRA
and
Ed Chapman, Director, Hazardous Materials, BNSF Railway
and
Dave Mahaney, Compass Intermodal

Part 5 – Prototype Operations: Responding to Changes



A concept we discussed early on, moving containers from west coast steamships to east coast steamships via a “land based bridge”, is changing. With changes at both the Panama Canal and the Suez Canal routes, shipping times from Asia to Europe are getting shorter which means there maybe less movement of containers across North America. However, the Canadian National (CN) Railway continues to promote their “shorter land routes” across Canada and through the United States from British Columbia (Prince Rupert and Vancouver ports) to the ports of Montreal, Quebec and Halifax, Nova Scotia, as compared to complete steamship transportation.

Fuel costs are changing the way some companies ship by rail and they are now leaving their containers on steamships for longer trips. Some have said they will deliver their containers by steamships to US west coast ports for anything going to locations west of the Mississippi River and sail to the US east coast ports for containers going to the eastern half of the US. It has been said that the railroad rates have been doing some serious changing as they deal with the higher fuel costs. Cost plans from six months ago look different today with the higher cost of diesel fuel and gasoline.

Another CN Railway intermodal story is about their new intermodal service, tailored for forest products producers serving key markets in Ontario and western Canada. The CN Railway will provide the service between the eastern Québec region, Toronto and western Canada, with daily service to Toronto; Winnipeg, Manitoba; Edmonton and Calgary, Alberta; and Vancouver, British Columbia. The service will appeal to shippers of heavy products that can load 60,000 pounds of freight into a 40-foot container, CN said. "We believe there is strong interest in this intermodal option in the Québec City area and beyond," said CN Senior Vice President of Sales Stan Jablonski in a prepared statement.

Photo courtesy of Canadian National

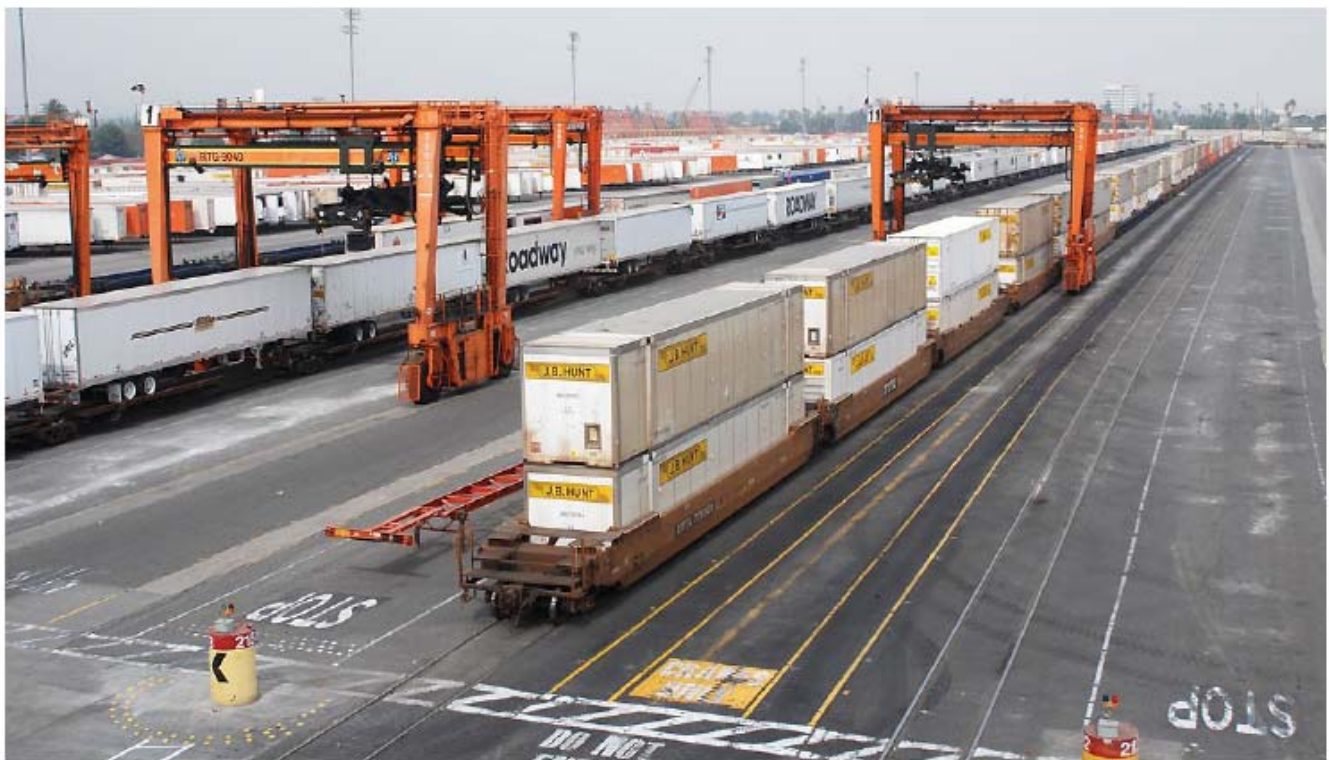




"The service will reduce wear and tear on long-distance truck fleets and extend the environmental benefits of rail to a new group of shippers."

Remember that 20 foot box containers in well cars will have the doors facing away from each other. The same is true for tank containers, as the discharge valves will be facing away from each other. Intermodal tanks carrying hazardous materials also will not have any containers set on top of them. If you see a box container on top of tanks, the tanks will contain non-hazardous materials, unless it is a mistake. BNSF Railway currently estimates that 1/5th of the hazardous materials they transport is in intermodal containers.

If you're going to build an intermodal terminal on your layout, remember that most are paved with concrete. You will find both concrete between the rails covering the ties and the ties exposed. Maintenance issues result if the tracks are completely paved over, but the perceived trade-off is improved ramp operation due to a smooth, drivable surface. There are modeling techniques in the scenery books on how to make realistic concrete to cover a large area.



Remember that both full and empty containers and truck trailers need to be transported on the railroad, so you will see "loaded" railroad cars going both ways. Also empty well cars, spine cars and flat cars will also be seen going both ways on railroads, as railroads and shippers need to reposition their equipment for the next rental or movement. 🚚

NEXT MONTH...

PART 6, PROTOTYPE OPERATIONS: AT THE RAMP



TURKEY CREEK DIVISION
4954 Marsh Avenue
Kansas City, MO 64129-2111



FIRST CLASS MAIL
ADDRESS SERVICE REQUESTED 4955

mcor-nmra.org/divisions/turkeycreek/

TURKEY CREEK DIVISION MEETING

7:00 P. M. June 24, 2008
Johnson County Offices

2008

June 24

July 22 - meeting place to be announced

August No Meeting

August 2 Train Show Saturday

September 23

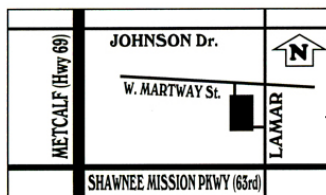
October 28 - meeting place to be announced

November 25

December 16, Third Tuesday of the Month Holiday Party

All meetings start at 7PM

Northeast Johnson County Offices 6000 Lamar, Mission, Kansas



We meet at the NE Johnson County Office, located at 6000 Lamar, Shawnee Mission, KS (the southwest corner of West Martway and Lamar).

