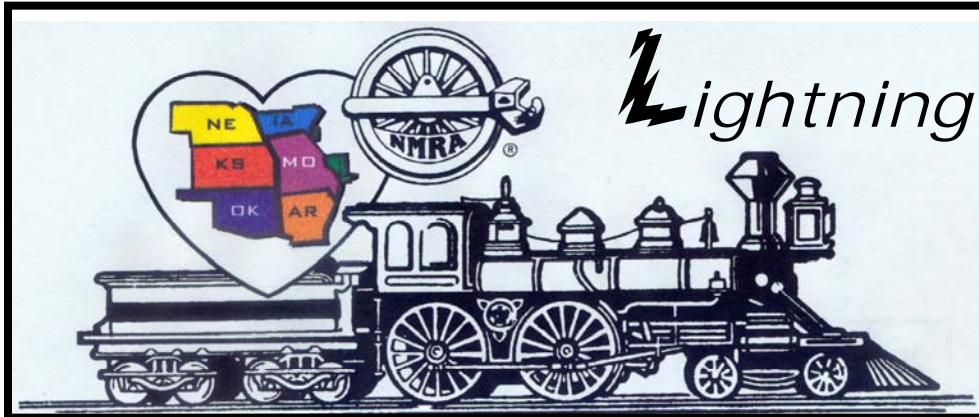


Turkey Creek Division



Lightning Slinger

VOL 23 NO. 6

"For all gauges and all ages"

June 2009

MONTHLY PUBLICATION OF THE TURKEY CREEK DIVISION
OF THE MID-CONTINENT REGION, NMRA

This years
MODELING
CHALLENGE
happens on
June 23, 2009



From THE SUPER'S DESK....

Hello everyone!

June 2009 Newsletter - Turkey Creek Division

We have a camera! Thank you Shelly, Paul and Kerry. This should really provide opportunities to have better "hands-on" clinics. I hope many of you will come forward with modeling ideas to share with all. You do not have to prepare PowerPoint slide shows to show your techniques and processes. You can mark, cut, detail, glue and paint in front of the camera, and all will be able to see! Who wants to be first?

Consider...air brush techniques, weathering approaches, your process to construct intricate stair details, trellis, streams, water features, weeds, people building...

Congratulations Shelly Levy with an AP Certificate for Author. Paul Richardson MMR conducted a white elephant exchange and all seemed to leave happy with their new finds!

We had two really good clinics historically oriented about railroads in the Kansas City Area. Dennis Owens made an excellent presentation on origins of railroads into Kansas City. How Kansas City struggled to establish commerce dominance over St. Joseph and Leavenworth, even stiff competition from Pleasant Hill as a desirable rail center. The confluence of the Missouri and Kaw did not ensure success. As Dennis pointed out, the Hannibal Bridge was the turning point of Kansas City's growth, opening in 1869. It was the first bridge across the Missouri River, spanning 1371 feet.

It was the political accomplishment of community leaders Kersey Coates and Robert Van Horn, with engineering design by Octave Chanute, chief RR engineer for the Chicago and Alton Railroad. Very Interesting Dennis!

Bob Jefferies gave an equally interesting presentation on the Strang Line Interurban Trolley Railroad. The line operated from approximately 1906 to 1941. It was developed by Mr. William Strang as a part of his grand plan to develop a community he called Overland Park. As a part of the promotions, Overland Park had the first "aviation airport" west of the Mississippi!

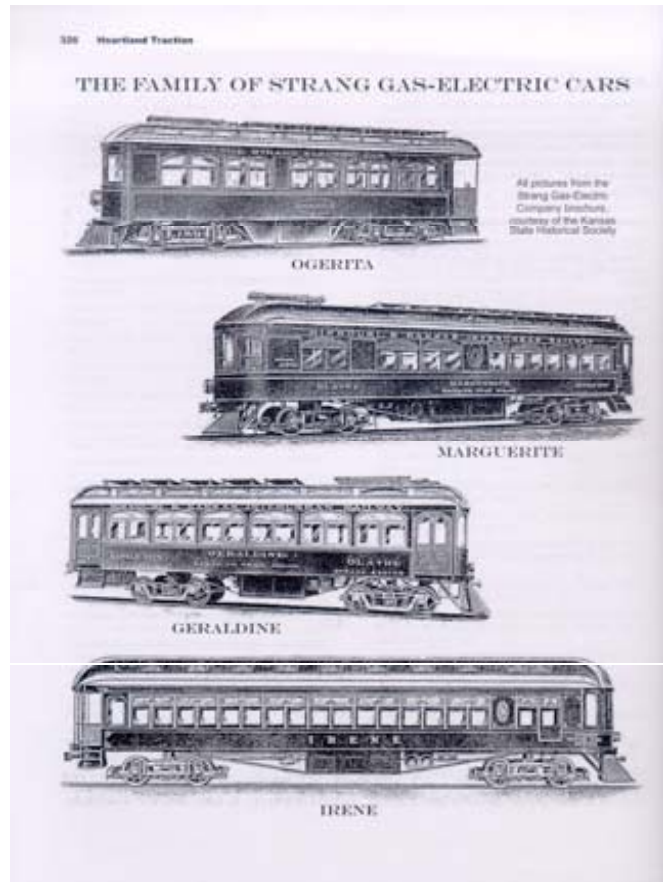
We learned Mr. Strang was very mechanically inclined and quite ingenious in designing the first "gas-electric" powered cars (1906) in lieu of steam or overhead trolley lines. Unfortunately, the gas-electric design was ahead of its technology of the day and repairs were difficult and time consuming, with downtime causing ridership issues. In 1914 they converted the line to overhead electrical trolley operation.

The design of the gas-electric system went on to be developed by railroads in the 1930's and the basis of motive power today known as diesel-electric locomotives. That idea is even gaining popularity with automobile designs as a means to fuel economy, dubbed the hybrids! Thank You. Great presentation Bob!

(I hope I got the facts correct.)

I hope many get to attend the MCOR Wichita Northern Extra 2009 convention and train show June 11th to 14th.

The 7th Annual KCNG Narrow Gauge meet is a one day event held at Antioch Branch Johnson County



Library, 8700 Shawnee Mission Parkway, Merriam, Kansas. Contact Larry Alfred at laffred2@comcast.net.

Next meeting is our Modeling Challenge, Tuesday, June 23rd. Hope to see everyone there!

Photos from:

Sincerely, *Historic Photos of Kansas City*
by Lara Copeland, Larry W. Diehl, *Heartland Traction*
by Edward Conrad

Sincerely,

Larry W. Diehl



Turkey Creek Division Minutes **May 26th**

Meeting was called to order by Larry Diehl at 7pm.

Larry said that the Committee for the camera had brought one and plans to use it at the Regional meet. He thanked Shelly, Paul and Kerry for their hard work.

Larry then asked if there was any AP to be presented. Marty Vaughn MMR said that he had one. Marty then asked Sheldon Levy to come forward and receive his AP Certificate for Author.

Next was the White Elephant Exchange done by Paul Richardson MMR.

Louis then gave a quick update on coming vents for the Division. The Regional Convention June 11-14, KCNG Narrow Gauge on 27th, Turkey Creek Show on August 1st, Mid American on August 2, the Large Scale show on August 14 & 15, and Train Fair on September 26 & 27.

Larry asked if anyone would like to be the chairman of the layout tour for the Turkey Creek Meet. He got no reply. He asked if anyone would like to be on tour Chuck Hitchcock MMR said that he would. He would also check with members of the operations group to see if some of them would be on tour.

Larry asked if there were any visitors both of Robert Jefferies sons Brint and Curt and Peter & Bonnie Hanson.

Next we took a short break so that we could finish setting up the clinic.

Dennis Owens gave his clinic on the History of Railroads in Kansas City. Robert Jefferis then gave his on the Strang Line Interurban Trolley Railroad. These were both **Excellent** clinics. For those that missed them they will be presented at the Turkey Creek Meet in August.

Louis Seibel
Clerk
PS

The MCOR Wichita Northern Extra 2009 Convention was excellent. There are some Pictures in this issue. More pictures to come in the July issue.

OFFICERS

Superintendent

Larry Diehl
HP: 913-441-1605
ldiehl@aci-boland.com

Paymaster

Jack Boren
HP: 913-962-2408
jbcmd1@me.com

Clerk

Louis O Seibel
HP: 913-393-3495
C: 913-927-6850
L-seibel@comcast.com

Division Director

Brad Morneau
HP: 913-897-0669
bmorneau@kc.rr.com

Train Show Chairman 2009

Louis O Seibel
HP: 913-393-3495
C: 913-927-6850
L-seibel@comcast.com

Membership Chair

Gary Hankins
HP: 913-782-4645
marlysdee@aol.com

L S Editor

Ted Tschirhart
HP: 816-816-3449
tedschi@kc.rr.com

AP Merit Awards & Achievement

Joe B. Robertson, MMR
HP: 816-331-2773
piperva@aol.com

Past Superintendent

Kerry Lindenbaum
HP: 913-648-8201
klldgl@att.net

Web Master

Paul Myers, MMR
HP: 816-734-3719
paulwmyers@kc.rr.com

Web

<http://www.tc-nmra.org>
Turkey Creek Division
IS A 501(C) (3)
ORGANIZATION



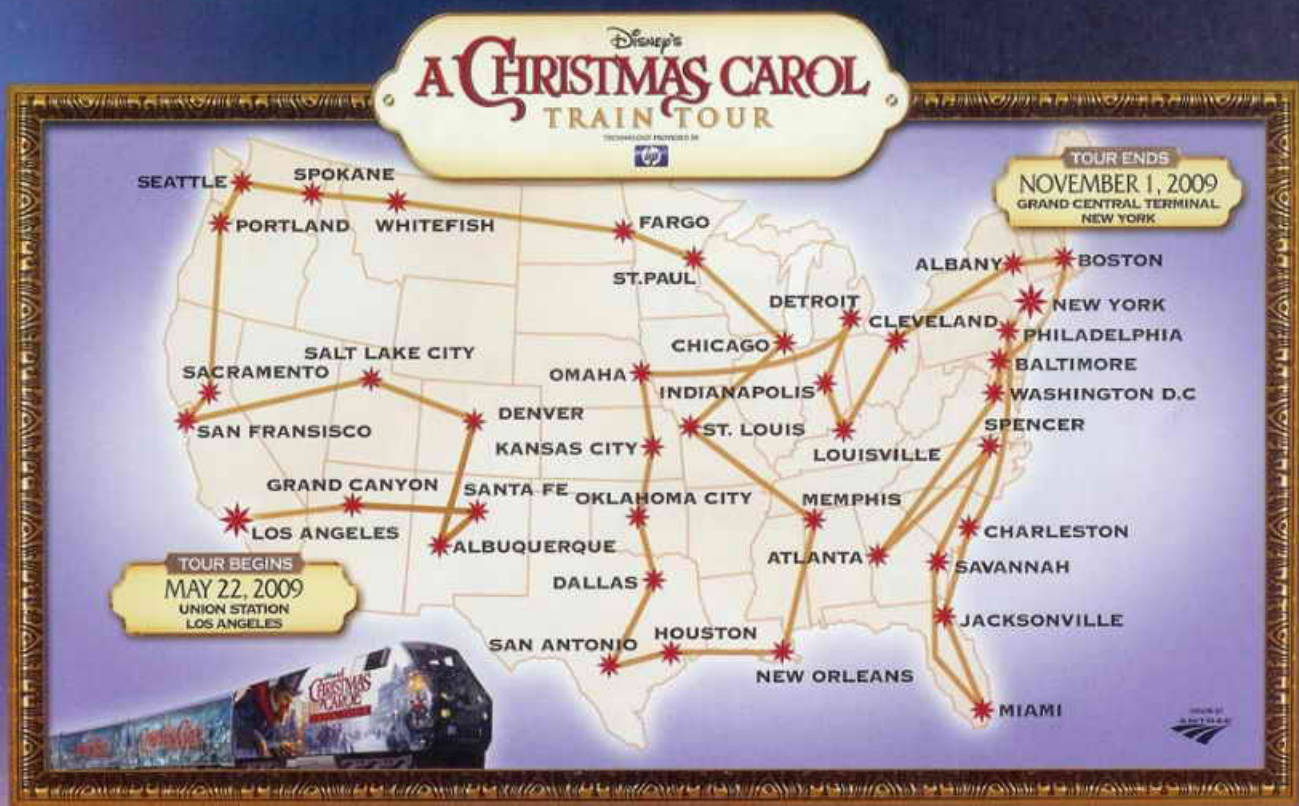




Pictures of meeting







MAY 22-25
LOS ANGELES, CA
Los Angeles Union Station
800 N. Alameda St.
Los Angeles, CA 90012

MAY 29-31
GRAND CANYON, AZ
Williams Depot
233 North Grand Canyon Blvd
Williams, AZ 86046

JUNE 2
SANTA FE, NM
Santa Fe Depot
419 S. Guadalupe St.
Santa Fe, NM 87501

JUNE 5-7
ALBUQUERQUE, NM
Albuquerque Amtrak Station
214 First Street Southwest
Albuquerque, NM 87102

JUNE 12-14
DENVER, CO
Denver Union Station
1731 W. York St.
Denver, CO 80202

JUNE 15
SALT LAKE CITY, UT
Ogden Union Station
2501 West Avenue
Ogden, UT 84401

JUNE 19-21
SACRAMENTO, CA
California State Railroad Museum
1111 J Street
Sacramento, CA 95814

JUNE 26-28
SAN FRANCISCO, CA
Port of Redwood City
375 Seaport Blvd.
Redwood City, CA 94063

JULY 1
PORTLAND, OR
Portland Union Station
800 Northwest 8th Avenue
Portland, OR 97209

JULY 3-5
SEATTLE, WA
King Street Station
300 South Jackson Street
Seattle, WA 98104

JULY 7
SPOKANE, WA
Spokane Amtrak Station
221 W. 1st Avenue
Spokane, WA 99201

JULY 10-11
WHITEFISH, MT
Amtrak Station
100 Depot St.
Whitefish, MT 59937

JULY 15
FARGO, ND
North Dakota State University
1301 12th Avenue North
Fargo, ND 58102

JULY 17-19
ST. PAUL, MN
Amtrak Midway Station
120 Transfer Road
St. Paul, MN 55114

JULY 24-26
CHICAGO, IL
Chicago Union Station
225 South Canal Street
Chicago, IL 60606

JULY 31 - AUG 2
ST. LOUIS, MO
St. Louis Union Station
500 South 10th Street
St. Louis, MO 63103

AUGUST 4
MEMPHIS, TN
Memphis Central Station
645 South Main Street
Memphis, TN 38163

AUGUST 7-9
NEW ORLEANS, LA
Audubon Zoo and Park
500 Magazine Street
New Orleans, LA 70118

AUGUST 11
HOUSTON, TX
Houston Amtrak Station
902 Washington Avenue
Houston, TX 77002

AUGUST 14-16
SAN ANTONIO, TX
San Antonio Amtrak Station
250 Heargen Street
San Antonio, TX 78205

AUGUST 18-19
DALLAS, TX
Dallas Union Station
401 South Houston St.
Dallas, TX 75202

AUGUST 21-23
OKLAHOMA CITY
Oklahoma City Santa Fe Depot
100 South E. K Gaylord Blvd.
Oklahoma City, OK 73102

AUGUST 25
KANSAS CITY, MO
Kansas City Union Station
30 W. Pershing Road
Kansas City, MO 64108

AUGUST 28-30
OMAHA, NE
Durham Museum
801 South 10th Street
Omaha, NE 68106

SEPTEMBER 4-6
DETROIT, MI
Henry Ford Museum
Greenfield Village
20900 Oakwood Blvd.
Dearborn, MI 48124

SEPTEMBER 9
INDIANAPOLIS, IN
Downtown Bargersville
24 North Main Street
Bargersville, IN 46106

SEPTEMBER 11-13
LOUISVILLE, KY
Louisville Union Station
1000 W. Broadway
Louisville, KY 40203

SEPTEMBER 18-19
CLEVELAND, OH
Cleveland Brown's Lot
1095 W. Third St.
Cleveland, OH 44118

SEPTEMBER 22
ALBANY, NY
Albany-Henrieville Rail Station
525 East Street
Henrieville, NY 12144

SEPTEMBER 25-27
BOSTON, MA
South Station
2 South Station
Boston, MA 02119

SEPTEMBER 30
BALTIMORE, MD
B & O Railroad Museum
909 W. Pratt St.
Baltimore, MD 21223

OCTOBER 2-4
WASHINGTON, DC
Union Station
50 Massachusetts Ave. NE
Washington DC 20002

OCTOBER 6
ATLANTA, GA
Southeastern Railway Museum
3095 Peachtree Rd.
Duluth, GA 30096

OCTOBER 9-11
SPENCER, NC
NC Transportation Museum
411 S. Salisbury Ave.
Spencer, NC 28158

OCT 30 - NOV 1
NEW YORK, NY
Grand Central Terminal
42nd Street and Park Avenue
New York, NY 10017

OCTOBER 13
SAVANNAH, GA
Savannah Amtrak Station
2611 Seaboard Coastline Dr.
Savannah, GA 31415

OCTOBER 16-18
MIAMI, FL
Gold Coast Railroad Museum
12450 SW 152nd St.
Miami, FL 33177

OCTOBER 20
JACKSONVILLE, FL
Jacksonville Amtrak Station
3510 Clifford Lane
Jacksonville, FL 32209

OCTOBER 23-25
CHARLESTON, SC
Ansonborough Field
Washington and Concord
Charleston, SC 29401

OCTOBER 27
PHILADELPHIA, PA
30th Street Station
2955 Market Street
Philadelphia, PA 19104

ENTER FOR A CHANCE TO WIN AT EVERY STOP



**RADIO DISNEY invites you to become a
Movie Surfer in your hometown!**

Visit a stop near you and enter to win a prize package
of Movie Surfer and Disney's A Christmas Carol Gear –
and to become your "Hometown Movie Surfer."

ALL ABOARD!

Enter to win an
**HP TouchSmart PC &
Photosmart Printer**
at each station!



Visit **www.christmascaroltraintour.com** for more details
Enter for a chance to win 4 Tickets to the World Premiere of Disney's A Christmas Carol in London

GIVE-AWAY BROUGHT TO YOU BY **AMTRAK**

The National Highway Traffic Safety
Administration encourages you to
Buckle Up, Every Trip, Every Time!



ALL ABOARD!

Disney's A CHRISTMAS CAROL TRAIN TOUR

TECHNOLOGY PROVIDED BY



MAY 22 - NOVEMBER 1

See Back For City and Dates



www.christmascaroltraintour.com

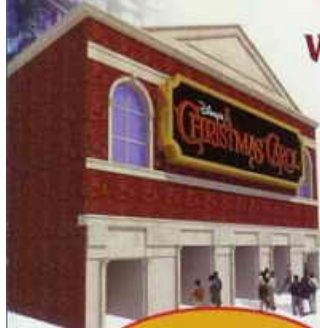
Enjoy a once-in-a-lifetime attraction where guests of all ages will get a behind the scenes look at the magic, the spectacle and cutting edge technology of the all-new motion picture "Disney's A Christmas Carol" directed by Robert Zemeckis – and it's all for FREE!

- See a sneak peek of the film in our state of the art Digital 3-D™ Theater!
- Experience a Behind the Scenes look at the making of the Movie!
- See original artifacts from the Charles Dickens Museum in London, England!
- Morph your face into characters from the movie using HP TouchSmart PC's!
- See concept art, models, costumes and maquettes!
- Plus Carolers, Snow and Much More!

**Fun for the
Whole Family!**



SNEAK PEEK IN
DIGITAL 3D™



Home layout of Jack Rosenfield

Photos By Louis Seibel

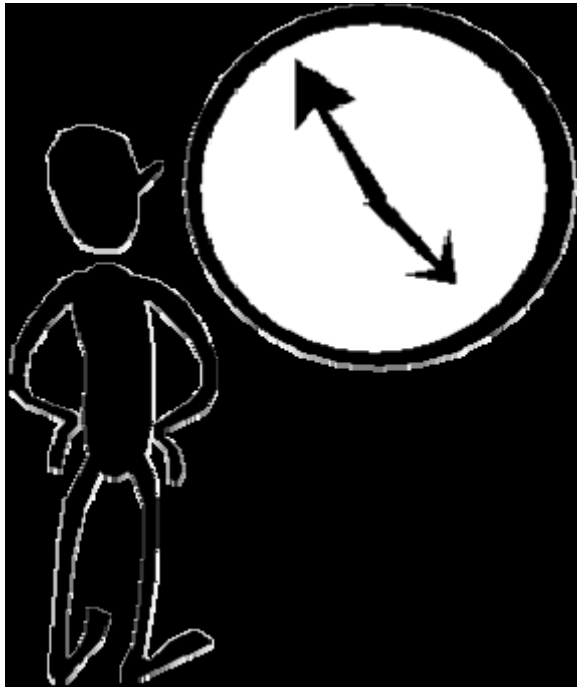


Maintenance of Way Equipment in Olathe and Grandview

Photos By Louis Seibel



This Tuesday June 23, 2009



DA “Hammer” Report.. Okay... We have 15. 2009 Turkey Creek Division Modeling Challenge

by Rusty Rails
2009 Turkey Creek Division Modeling Challenge
by Rusty Rails

Here we go again! For the 6th Annual TCD Modeling Challenge, the theme continues, as it was last year, to be opened up to the max! Again this year, you may build and enter anything, yes....that's anything. The only requirement is that it must fit through the meeting room door! This is the theme voted on by the members

attending the modeling challenge meeting last summer. So, what exactly does this mean for each of you? What it means is that you will not have any excuse whatsoever for not participating in the event. Let me emphasize here that the Modeling Challenge program was conceived to encourage everyone to participate in the enjoyment of building and displaying railroad models!! Please don't feel overwhelmed, intimidated, or that you don't have time to join in. It is hoped that by participating you will feel a sense of “inclusion”, that of being “one of the group.”

You may ask yourself, what sort of model could I enter? First, let me make this clarification.....entries need not be constructed especially for this event. If you have something that you built in the past, please consider entering it. Or, if there is a new project that you have been thinking about starting, now is a good time. You could limit your entry to a single car or locomotive..... remember any scale or gauge is acceptable, from Z to live steam. You could also consider entering your favorite entire train. Alternatively, you could focus on structures and enter a single structure or a full scene with several buildings. Remember, there is no limit! You might want to build a large or small display or diorama, with basic details or highly detailed.

Whichever, this could be an opportunity to build a component of your home layout....to be incorporated into the layout at a later date. Several of the past entries have been used in this way, to a great benefit of the modeler. Possibly, the ultimate entry could be an entire operating layout (albeit, somewhat small.....remember, it has to fit through the door)! This is intended to be a fun filled event, with the entry possibilities only limited by your imagination, creativity, and enthusiasm to participate.

The judging will be by popular vote, so crowd appeal will be important. The event will take place at our June 23rd meeting, so you have almost four months to prepare your entry. As in the past, there will be three places plus honorable mentions awarded for this challenge, plus awards for the “Most Creative” and the “Most Whimsical” entries. But, again, I want to emphasize that the participation is the important aspect of this program. So, if you're interested in being involved, start thinking about your model entry now. There is plenty of time, but don't put it off. This will be another fun event!



This years MODELING CHALLENGE

happens on
June 23, 2009

Please join in on the fun and

BUILD...
BUILD...
BUILD...
BUILD...

**BUILD...
BUILD...
BUILD...
BUILD...**

Drop me an e-mail and let me know if you will be joining
the fun this year and what scale
you will be modeling.

- 1.) Larry Alfred, MMR... **Yes... 'O' scale**
- 2.) Ron Morse, MMR... **yes... 'HO' Scale**
- 3.) PAT HARRIMAN... **YES... 'ON30' SCALE**
- 4.) Dave Jacobs... **YES.. 'O' SCALE**
- 5.) Fred Hulen ... **Yes... 'HO' Scale**
- 6.) Larry Diehl... **yes... 'HO' Scale**
- 7.) Gary Sidebottom... **yes... 'HO' Scale**
- 8.) FRAN HALE... **yes... 'HO' Scale MODULE**
- 9.) MILES HALE, MMR... **yes... 'HO' Scale MODULE**
- 10.) Paul Myers... **yes... 'HO' Scale**
- 11.) Marty Vaughn, MMR... **yes... 'N' Scale**
- 12.) Jack Ferris... **YES.. 'O' SCALE**

13.) JIM gameson... **yes... microcontrolled switching display.**

14.) Shelly LevY... **yes... On3 model**

15.) Kent Hurley... **yes... 'HO' Scale... I will finally try to finish a diorama I started over ten years ago**

Ron Morse, MMR
Morse Productions

ronmorsemmr@gmail.com
<http://morseproductions.blogspot.com/>

The Railroads Made Kansas City

Dennis Owens's presentation addressed the geographic, business, and political forces at work in determining how and why Kansas City emerged as a great railroad center – second only to Chicago. In 1860, Kansas City was smaller than St. Joseph, Atchison, Leavenworth, Westport or Independence. The first significant railroads in Missouri reached St. Joseph and Sedalia. The Missouri Pacific was going to go to Pleasant Hill and then keep moving due West, bypassing Kansas City! Railroads were crucial to the growth and prosperity of a community.

The Hannibal Bridge changed all that. It connected Kansas City with Chicago. Dennis recounted the many railways that then came to town and how their names changed. Census figures are the proof of the comparative growth of Kansas City and its rivals. The railroads brought the stockyards, the packing plants, allied industries, and the markets. These brought jobs, population growth, money, and optimism.

Dennis spoke for a half hour without notes, citing numerous dates, names, facts, events, and ideas.



Layout Design and Operations Weekend 2009

September 25, 26 & 27

Tulsa, Oklahoma

Presented by the Indian Nations Division of the NMRA

In conjunction with the LDSIG and OPSIG

Workshop Presentations

Saturday September 26th from 9:30am-4:30pm

- Paul J. Dolkos – Designing Baltimore's Fell Street District.
- Marty McGuirk – Designing the Central Vermont
- Keith Jordan – Designing Los Angeles' "The Patch"
- Several others are in the works.....

- ✓ Also, Birds of a Feather (discussion groups)
 - ✓ Bring your trackplans, photos, display boards and mockups to share with everyone, great place to solicit feedback on your layout!
 - ✓ Panel discussion
 - ✓ Conclude the day with layout open houses from 6pm to 10pm
-

Local layout operating sessions:

Friday September 25th from 7pm-10pm

Sunday morning September 27th from 10am to 1pm

(Out of town and first time operators get preference,
register early to secure a spot on one of the layouts!)

Registration will be limited to 200. Don't miss out!

(Registration form located on back)

Location:

Hardesty Library

8316 E. 93rd St.

(Just East of Memorial on 93rd St.)

Tulsa, Oklahoma 74133

Visit our web page for additional and updated information; follow the link to the meet at: www.tulsanmra.org

We look forward to seeing you in Tulsa!



Plan to attend the only Kansas City area railroad event located at an operating train station and historical landmark!

only at the Station!

Train Fair

September 26th and 27th, 2009!

This one-of-a-kind event is presented by The Union Station Kansas City Model Railroad Society, which is made up of volunteers who take care of Union Station's model railroad collections and displays.

Vendor booths will be located in Sprint Festival Plaza inside Union Station. Visit the Train Fair to see operating model train layouts of various scales; representatives from railroad historical societies; railroad displays; safety information; and more! Special events for kids too!

It's all about trains and only at Union Station
Saturday and Sunday - September 26 and 27, 2009
Saturday 9 a.m. – 5 p.m. - Sunday 10 a.m. – 4 p.m.

**Goin' to
Kansas City...**



**Kansas City,
here I come!**

**Special Hotel Rates
and Show Discounts**

**August 14 & 15, 2009
Overland Park Int'l Trade Center
115th & Metcalf
Overland Park, Kansas**

Layout Displays • Manufacturers Exhibits • Vendors

**For more information,
visit us on-line at
www.hagrs.com**

**Heart of America
Garden Railroad Show
24595 Hedge Lane
Paola, Ks 66071**

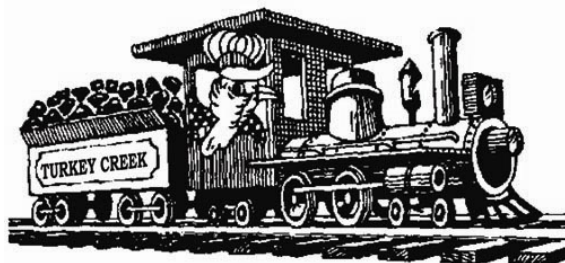
**Show Car
For HAGRS**

Clinics:

- Drawf Plants
- Water Features
- Bridges
- Weathering
- Super Detailing
- DCC & MTS
- Radio Control
- Master Gardener

and more, check our website for details.





**Turkey Creek Show
August 1, 2009
Lenexa Community Center
13420 Oak, Lenexa, KS (Pflumm & Santa Fe Drive)**

Activities planned for this year's meet include:

- o **Clinics** – a full slate of clinics covering many aspects of the hobby.
 - o **Model & Photo Contests** – by NMRA judging and Poplar vote. *Each model (up to a maximum of 5 models) you enter in the model contest will automatically qualify you to be entered in to a special drawing to receive a \$50.00 gift voucher.* Special Youth Award for the best overall youth model entry.
 - o **Door Prizes** – Additional door prizes will be set aside for advance registrants.
 - o **Display Layout and Layout Tours** – In addition to the display layout at the meet, several local modelers will be opening their homes to layout tours in the afternoon and evening. Layout tour maps will be available for collection with your registration.
 - o **Swap Tables and Railroad Groups** – Expect to find more than 70 tables from area dealers, local hobbyists and other railroad groups. For information on tables contact Robert Jefferis at jeffbobj@everestkc.net.
- Food and Refreshments** – Scout Troop 92 will have food and refreshments available during the show.

Turkey Creek 2009 Division Meet Registration Form

Advance Registration: \$4.00 ♦♦♦ Full Registration: \$6.00 (\$5.00 NMRA member) at door
Children under 12 free with paid registration

	Advance Registration (\$4.00)	No. Registration	Total Cost
Name:			
Address:			
City			
State Zip			
Telephone #:		Total Enclosed:	
E-Mail Address:		Scale Modeled	
More Registrant Names:			

Make Checks Payable to: "Turkey Creek Division"
Mail to: Turkey Creek Show, C/o Sheldon Levy, 9054 Muller, Lenexa, KS, 66215-5409





Dogpatch and Western Railroad

*The home of easy-to-build full-size **caboose kits**.*

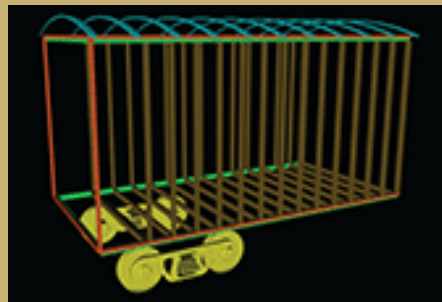
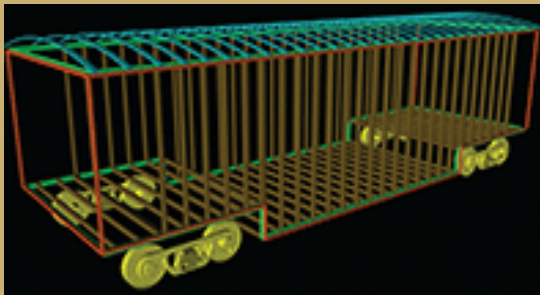
June 11, 2009

Greetings,

Perhaps the club, or some of your members, might like to own a real caboose, but have been concerned about the cost. Perhaps for a club house, hobby house, or even a guest house.



We custom design and build full size do-it your-self framing kits, of your-design cabooses. We can build these kits up to 40 feet exterior size, to be assembled for as little as \$4000.



Our product includes the basic frame, constructed of lumber and steel, and since we only ship the un-assembled frame, allowing you to purchase standard sized lumber locally, we are able to

hold shipping costs to a minimum. And, the use of innovative materials and design holds the cost down further. Assembly is easy, requiring 2 people with ordinary tools and no special skills to assemble the frame in about two days.

We strive to blend authenticity with the needs of our customers, and allows us to build caboose kits up to 40 feet by 12 feet or more. Because of our design flexibility and the unpredictable needs of our customers, we prefer to have our customers purchase their own windows and doors, placing them where ever they want, as many as they want, and in their choice of sizes and styles.

We invite your members to visit our site, the home the "have it your way" Caboose Co.
WWW.DOGPATCHANDWESTERNRR.COM or contact me at **951-302-3084** to discuss your requirements and allow us to further describe our kits.

Thank you,

Richard Barak



THE SWITCHING LIST

*=new since last issue

The Switching List contains all known Mid-Continent Region, NMRA, train shows and Division meetings. It also lists all known club shows and swap meets in the Mid-Continent Region (IA, IL, MO, AR, NE, KS, and OK). To list your event, send it to: garyonho@cox.net, or Gary Hemmingway, 3201 SW Stone Ave., Topeka, KS 66614. To subscribe, or unsubscribe, to The Switching List send an email to the above link. Look for us on the MCoR web site: www.mcor-nmra.org. Put me on your newsletter list.

DIVISION MEETINGS

KANSAS CENTRAL DIVISION meets the 1st Saturday of even numbered months at various locations around the division area. This is a new schedule for 2009. Meetings are at 1:00 pm. For the full schedule check the MCoR website or email Gary Hemmingway: garyonho@cox.net. The next meeting is: *
June 6, 2009

Robert Stewart: 249 Redbud Estates, Manhattan, KS: To get to Robert's home get on HWY 113 on the west side of Manhattan, KS. Turn East on Farm Bureau Road, turn North (left) at the mobile home park office building. After the road turns east (right) continue across the intersection to Robert's mobile home, #249 on the North side of the street. Please do not block entrances to other mobile homes.

GATEWAY DIV. (ST. LOUIS, MO) meets 3rd Monday each month, 7:00 P.M. Odd numbered months: Trinity Lutheran Church, 14088 Clayton Road at Woods Mill Rd (Hwy 141), Ballwin, MO; Even numbered months: VFW Hall, O'Fallon, IL <http://www.gatewaynmra.org/division.htm>

TURKEY CREEK DIV. (KANSAS CITY, MO & KS) monthly meetings 4th Tuesday, 7:00 P.M. Johnson County Offices, NE Branch, 6000 Lamar, Shawnee Mission, KS (DMV Building on SW corner of Lamar and Martway)

WESTERN HERITAGE DIVISION (OMAHA, NE / COUNCIL BLUFFS, IA) meets second Saturday (except June and December) at noon. Sump Memorial Library, corner of Washington and Second Streets in Papillion (across from Runza). Visit www.whdnmra.org for more info and a map.

EASTERN IOWA DIVISION

* The Eastern Iowa Division has tentatively scheduled its next meeting for Saturday, May 2, 2009 at the Hawkeye Model Railroad Club in Coralville, Iowa. The start time is 9:00 AM. The meeting will include a short business meeting, a clinic on wiring a layout with DCC, merit judging and presentation of AP certificates, a "Bring & Brag/Show & Tell" session, and possibly an operating session on the Hawkeye Area Model Railroad Club layout. More information will be available on the Eastern Iowa Division web site, which is <http://eid.mcor-nmra.org/index.html> and through our newsletter – *The Wig-Wag* – which is also online at the same web address.

INDIAN NATIONS DIVISION meets at the New Hardesty Library at 8316 E. 93rd. St. (Just east of Memorial) in Tulsa,

OK. The time is from 9:30am to 12:30pm. Each meeting we have various presentations from clinics, to slide shows. After the meetings we have a layout tour at one of the members layouts. Meeting dates are: January 26, 2008, March 29, 2008, May 31, 2008, September 20, 2008, and November 19, 2008. Contact Dave Salamon at drs_rr@yahoo.com for further information.

***KATE SHELLEY DIVISION** now meets the 4th Thursday at the Ames Public Library in Ames, Iowa. Time is 7 Pm to 8:45 PM. All are welcome to attend the meetings. The library is located at 515 Douglas Ave. We meet in the upstairs meeting rooms.

PLATTE VALLEY DIV. (HASTINGS, GRAND ISLAND, KEARNEY, NE) meets 2nd Tuesday of each month at 7:00 p.m. in members homes on a rotating basis. Info: John O'Neill, MMR, Div. Dir., 308-384-5011 or jponeill@computerconcepts.com.

WESTERN KANSAS DIVISION (GARDEN CITY, KS) Meets every Monday evening from 7:00 P.M. to 9:00 P.M. at 4091/2 N. Main St. (second floor above "Stage" department store) 7 layouts on display (2-HO, 5-N) Operating sessions available Info: Robert Simmons, Division Director (620) 521-3591 or ras@odsgc.net.

*INDIAN NATIONS DIVISION

Meets 5 times a year, remaining 2009 meetings: May 2, Theme - Steam Locomotives; September 19, Theme - Freight Cars; November 14, Theme - Structures/Dioramas. Meet from 9:30am-12:30pm at the Hardesty Library, 8316 E. 93rd St, Tulsa, Oklahoma. After the meeting we visit one of the local layouts. Web page: www.tulsanmra.org
Superintendent - Dave Salamon (918)272-5512 or drs_rr@yahoo.com

CLAREMORE & SOUTHERN RR OPERATING SESSION, Info: George Maulsby, 9372 E. Clover Creek Dr, Claremore, OK 74017-1487, Claremore & Southern RR www.csrailclub.com

Division Directors, Train Show Chairs, or Club Show Chairs: Let's get the word out about your 2008 or 2009 event! Get your information to Gary at any of the above addresses. **The Switching List is a service of Mid-Continent Region, NMRA.**

TRAIN SHOWS & MEETS

*= New or revised since last e-mailing

***JUN 20-21, 2009—31ST ANNUAL PITTSBURG MODEL RR CLUB TRAIN MEET**, Meadowbrook Mall, Centennial & Broadway, Pittsburg, KS; Sat: 9 am – 9pm, Sun 1 pm – 4 pm, Operating Layouts, lunch available; Adm: Free, Tables \$12.50 each, 6 or more \$10.00 each, dealer set up 6-19 8 pm. 6-20 8 am, advanced registration with payment to 508 N. Woodland, Pittsburg, KS 66762 other Info: 620-231-9674 before 8 pm CST please.



Introducing the best deal in model railroading.

Join the NMRA for 6 months for just \$9.95*!

Sign me up!

Fill out this form and include your payment. **U.S.:** Send \$9.95 (U.S.) to NMRA-Rail Pass Membership, 4121 Cromwell Road, Chattanooga, TN 37421-2119. **Canada:** Send \$9.95 (Cdn) to NMRA-Canadian Rail Pass Membership, 69 Schroder Cres., Guelph, ON N1E 7B4, Canada.

Name _____

Address _____

City/State/Zip _____

Phone (____) _____

Email _____

☐ Check

☐ Credit card

Credit Card # _____

Credit Card Exp _____

Signature _____

*Rail Pass offer is for new members and those who have not been NMRA members for two years or more. Individuals can join at Rail Pass rates only once; membership renewal will be at the regular membership rate. Rail Pass members can attend conventions and participate in contests, but cannot vote or hold office and will not receive a New Member Pak.

- Have easy access to one of the world's largest railroad libraries...which includes over 100,000 prototype photos, 6,000 books, and over 50,000 modeling, prototype and historical society magazines
- Experience the fellowship and fun of getting modeling help and discussing the hobby with other members in your area
- Receive reduced rates on special insurance for your layout or collection
- Get admission to local model railroad meetings & events
- Receive 6 monthly issues of *Scale Rails* magazine
- Have access to standards info and data sheets
- Be a part of programs like "Modeling With The Masters," the Pike Registry, Estate Counseling, contests, clinics, the Achievement Program and more!

**Also
available in
Canada!**



**Visit www.nmra.org to
see what you're missing!**

**So much bang.
So few bucks.**

***JUL 5-11, 2009, HARTFORD NATIONAL 2009--NMRA NATIONAL CONVENTION**, Hartford Convention Center, Hartford, CT, See the March 2009 *Scale Rails* for details and fares or the convention web site www.hn2009.org. There are way too many activities and events to list them all here. HN2009 will be a great national convention.

***AUG 1, 2009—TURKEY CREEK DIV MEET**, Lenexa Community Center, 13420 Oak, Lenexa, KS 66215, 9:30-3:30, Advance Registration \$4, Day of the Show \$6 (\$5 NMRA Member). Activities Clinic, Model & Photo Contest, Swap Tables around 90 cost \$15 each, Home Layouts nine or more, and Door Prizes. Registration forms may be found on the web site. Wheelchair Accessible, Info: Louis Seibel, Show Chairman at l-seibel@comcast.net, www.tc-nmra.org

***AUG 25, 2009—DISNEY CHRISTMAS CAROL TRAIN**, Union Station, Kansas City, MO, The cars will contain exhibits from the Charles Dickens Museum in London and stuff from the movie. It's free. Info: <http://disney.go.com/disneypictures/christmascaroltraintour/>

***SEP 12, 2009-- BOEING EMPLOYEES RAILROAD SWAP MEET**. St. Louis, MO—10 am—3 pm, Greensfelder Recreation Complex at Queeny Park, 550 Wiedman Rd., St. Louis, MO 63011, Adm: \$3 children under 12 free w/pd adult, doors open for sellers setup at 8 am, Tables (30"x96") \$15.00, Info: Wayne

Schimmel, VP/Swap Meet Conductor, Boeing Employee's Railroad Club, St. Louis, MO, wwhtehrse@aol.com or call after 6:30 pm 636-668-6313 or mail: 733 Hwy Y, Winfield, MO 63389-2206.

***SEP 12-13, 2009—FRISCO FESTIVAL**, Watco Companies, 315 W. 3rd Street, Pittsburg, KS, hosted by the Heart of the Heartland Corp. a railroad historical society, Watco Companies, Inc. and the South Kansas & Oklahoma Railroad. Events will include three clinics on Frisco history and modeling, swap meet, slide show, model display area, operating model railroad layout and on Sunday an all day train ride over former Frisco track to the Heartlands railroad museum at Carona with a catered lunch by Chicken Annie's. Registration, including the Sunday train ride and meal is \$20.00 (\$25 after 9/4).

Saturday's events will take place at the Watco National Headquarters building at 315 W. 3rd Street. Two of the clinic presenters will be Richard Napper and Rick McClellan. Bring your slides to show on Saturday evening, limit of 15 minutes for each presentation. Bring your own laptop computer we will have a projector on site. Swap tables will be limited to two per registration. First come first served on the tables, we have a limit of 30. The Watco meeting room is located in the basement and requires going down at least one flight of stairs. If you need help going down stairs please contact us ahead of time so we can arrange entry into the building at the rear entrance.

Total cost for both days including the train ride and lunch is \$20.00 per person for advanced registration or \$25.00 at the door. Advanced registration deadline is Sept. 4, 2009.

NAME: _____

ADDRESS: _____

CITY: _____ ST: _____ ZIP: _____



TURKEY CREEK DIVISION
4954 Marsh Avenue
Kansas City, MO 64129-2111



FIRST CLASS MAIL
ADDRESS SERVICE REQUESTED 4955

mcor-nmra.org/divisions/turkeycreek/

TURKEY CREEK DIVISION MEETING

Turkey Creek Division Meetings and Events 2009

May 26 Meeting at 7PM to 9:30 PM

June 23 Meeting at 7PM to 9:30 PM

July 28 Meeting at 7PM to 9:30 PM

August 1 Turkey Creek Division Train Show

9:30 to 4:00 Lenexa Community Center

September 22 Meeting at 7PM to 9:30 PM

October 27 Meeting at 7PM to 9:30 PM

November 24 Meeting at 7PM to 9:30 PM

December 15 Holiday Party All rooms A B C Meeting 7PM to 9:30 PM

