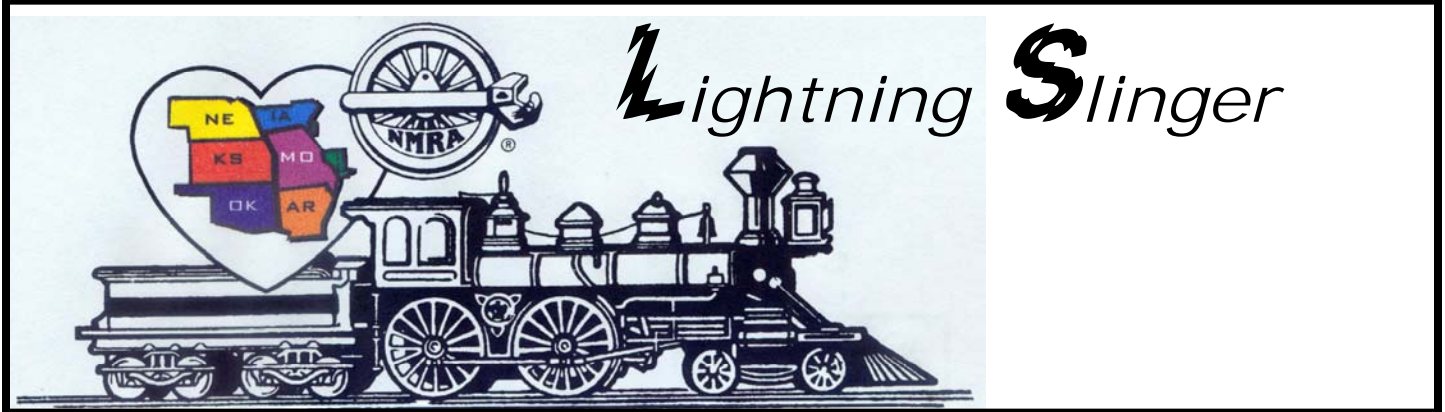


# Turkey Creek Division



VOL 23 NO. 9

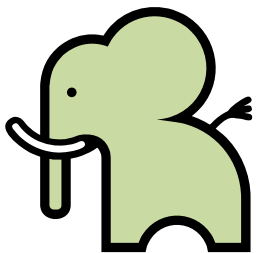
“For all gauges and all ages”

September

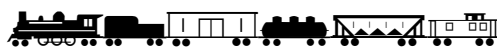
MONTHLY PUBLICATION OF THE TURKEY CREEK DIVISION  
OF THE MID-CONTINENT REGION, NMRA

Two Clinics  
Peter A. Hansen,  
editor of *Railroad History* and  
correspondent for *Trains* magazine,  
will offer a look at the history of  
Kansas City Union Station

"Scratch Building Models"  
By Brad Morneau



White Elephant Exchange



## Turkey Creek Division 2009 Contest Winners

### Maintenance of Way

- 1<sup>st</sup> Place – David Jacobs, Rail Maintenance Car
- 2<sup>nd</sup> Place – Ken Jenkins, Rock Island Crane and Tender
- 3<sup>rd</sup> Place – Pat Harriman, MMR, OCM&T Light Snow Plow

### Cabooses

- 1<sup>st</sup> Place – Ken Jenkins, Rock Island Caboose
- 2<sup>nd</sup> Place – Stephen Priest, MMR, ATSF Caboose
- 3<sup>rd</sup> Place – Pat Harriman, MMR, Shorty Caboose #4

### Diesel Locomotives

- 1<sup>st</sup> Place - Stephen Priest, MMR, Santa Fe #4011
- 2<sup>nd</sup> Place – Chester Myles, NW-SW
- 3<sup>rd</sup> Place – Chester Myles, PRR-BP20

### Steam Locomotives

- 1<sup>st</sup> Place – Chester Myles, B&O #282
- 2<sup>nd</sup> Place – Roger Percival, UP Challenger
- 3<sup>rd</sup> Place – Dick Schavile, Challenger

### Freight Cars

- 1<sup>st</sup> Place - Stephen Priest, MMR, Auto Rack
- 2<sup>nd</sup> Place - Pat Harriman, MMR, OCM&T Stock Car
- 3<sup>rd</sup> Place - Pat Harriman, MMR, OCM&T Gondola

### Passenger Cars

- 1<sup>st</sup> Place – E. J. Watson, Santa Fe Observation
- 2<sup>nd</sup> Place -
- 3<sup>rd</sup> Place –

### Structures

- 1<sup>st</sup> Place – Donald Broner, Blair Feed Grain Elevator
- 2<sup>nd</sup> Place – Marty Vaughn, MMR, Marty's Place
- 3<sup>rd</sup> Place – 7 Stall Roundhouse

### Dioramas & Displays

- 1<sup>st</sup> Place – Larry Diehl, Dakota Flour Milling
- 2<sup>nd</sup> Place – Ron Morse, MMR, Vick's Mercantile
- 3<sup>rd</sup> Place – Vance Reed, Work Train

Continued on next page

### Model Photos

- 1<sup>st</sup> Place – Ron Morse, MMR, Forks Creek & Central Depot
- 2<sup>nd</sup> Place – Paul Myers, MMR, G Scale Coal Train
- 3<sup>rd</sup> Place – Jacque Gameson, Creede Colorado Bank and Steam Engine

### Prototype Photos

- 1<sup>st</sup> Place – Larry Alfred, MMR, Double Head
- 2<sup>nd</sup> Place – Ron Morse, MMR, Memorial Day Steam Up
- 3<sup>rd</sup> Place – Paul Myers, MMR, San Diegoan

### Youth Award

Robby Spencer, CC's CDs

### Best of Show

Larry Diehl, Dakota Flour Milling

Peter A. Hansen,

editor of *Railroad History* and correspondent for *Trains* magazine, will offer a look at the history of Kansas City Union Station. More than a place to catch trains – magnificent as it was in that role – the station was the city's center of activity for decades. Pete will get you inside the head of architect Jarvis Hunt, relate stories from the WWII years, introduce some of the craftsmen who helped restore the building – and much more.

## "Scratch Building Models" By Brad Morneau

This clinic will cover my approach to planning a model and then fabricating parts, assemblies and final assembly from plans drawn up myself. I use Visio and other PC based tools to plan and design my models. The design process also includes templates I use to actually assemble my models. I will discuss construction in wood, styrene and even plaster using these techniques. The first part of the clinic will demonstrate design while the second part will demonstrate cutting and fitting parts.



## UP opens massive new bridge

A Union Pacific coal train eases across the railroad's new Des Moines River bridge west of Boone, Iowa, on Aug. 20. It's the first train to use the new bridge. The 1901-built Kate Shelley High Bridge is visible in the background. *Photo by: Bob Schmitt* BOONE, Iowa - Union Pacific last week ran the first trains across its new double-track Des Moines River crossing, the replacement for the famed Kate Shelley Bridge. Reliable reports indicate the first train passed through at 7:15 a.m. Thursday, though a UP spokesman couldn't be reached to confirm that.



The bridge carries trains of UP's "Central Corridor," which links Chicago with the West Coast and the Powder River Basin coal fields. Trains crossing the 1901-built Kate Shelley bridge had to slow to 25 mph, making it a bottleneck on the busy line. When completed, the new bridge will be able to handle 70 mph trains.

In July 1881, Kate Shelley saw a train derail from the Honey Creek Bridge near Moingona, Iowa, and crossed the bridge on her hands and knees to warn the station operator to halt rail traffic. The move saved a train from plunging into the river, and authorities with UP predecessor Chicago & North Western named the bridge in her honor.

Work began on the replacement bridge in early 2007. It stands 198 feet high and is 2,550 feet across. Of its 50 spans, 23 came from an abandoned Milwaukee Road bridge over the Des Moines at Madrid, Iowa.

No plans are in place to demolish the Kate Shelley, and it may be used for a UP access road.

## OFFICERS

### Superintendent

Larry Diehl  
HP: 913-441-1605  
[ldiehl@aci-boland.com](mailto:ldiehl@aci-boland.com)

### Paymaster

Jack Boren  
HP: 913-962-2408  
[jbcm1@me.com](mailto:jbcm1@me.com)

### Clerk

Louis O Seibel  
HP: 913-393-3495  
C: 913-927-6850  
[L-seibel@comcast.com](mailto:L-seibel@comcast.com)

### Division Director

Brad Morneau  
HP: 913-897-0669  
[bmorneau@kc.rr.com](mailto:bmorneau@kc.rr.com)

### Train Show Chairman 2009

Louis O Seibel  
HP: 913-393-3495  
C: 913-927-6850  
[L-seibel@comcast.com](mailto:L-seibel@comcast.com)

### Membership Chair

Gary Hankins  
HP: 913-782-4645  
[marlysdee@aol.com](mailto:marlysdee@aol.com)

### L S Editor

Ted Tschirhart  
HP: 816-861-3449  
[tedtschi@kc.rr.com](mailto:tedtschi@kc.rr.com)

### AP Merit Awards & Achievement

Joe B. Robertson, MMR  
HP: 816-331-2773  
[piperva@aol.com](mailto:piperva@aol.com)

### Past Superintendent

Kerry Lindenbaum  
HP: 913-648-8201  
[kllldgl@att.net](mailto:kllldgl@att.net)

### Web Master

Paul Myers, MMR  
HP: 816-734-3719  
[paulwmyers@kc.rr.com](mailto:paulwmyers@kc.rr.com)

### Web

<http://www.tc-nmra.org>

Turkey Creek Division

IS A 501(C) (3)

ORGANIZATION

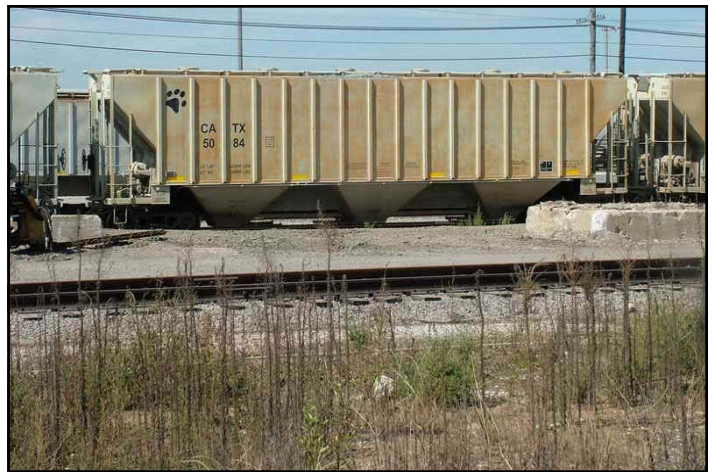


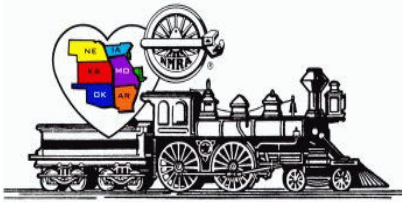


# Circus Train coming to Kansas City By Louis Seibel



Tom Stolte  
owner of Oddballs Decals  
My prototype photos <http://oddballsdecals.rpicturearchives.net/>  
my photos of the Missouri Pacific <http://www.trainweb.org/mopac/>





## Celebrate the 25<sup>th</sup> Anniversary of the Turkey Creek Division

### August 7, 2010 Turkey Creek Show

Lenexa Community Center  
13420 Oak, Lenexa, KS (Pflumm & Santa Fe Drive)  
Times 8:30 to 3:00  
Layout Tours 3:30 to 9:00

#### Activities planned for next year's meet include:

**Clinics** – a full slate of clinics covering many aspects of the hobby.

**Model & Photo Contests** – by NMRA judging and Popular vote. *Each model (up to a maximum of 5 models) you enter in the model contest will automatically qualify you to be entered in to a special drawing to receive a \$50.00 gift voucher.*

Special Youth Award for the best overall youth model entry.

**Door Prizes** – Additional door prizes will be set aside for advance registrants.

**Display Layout and Layout Tours** – In addition to the display layout at the meet, several local modelers will be opening their homes to layout tours in the afternoon and evening. Layout tour maps will be available at the show to paid registrants.

**Swap Tables and Railroad Groups** – Expect to find more than 70 tables from area dealers, local hobbyists and other railroad groups. One table includes 1 registration; two or more tables include 2 registrations. For information on tables contact Robert Jefferis at [jeffbobj@everestkc.net](mailto:jeffbobj@everestkc.net).

**Food and Refreshments** – Scout Troop 92 will have food and refreshments available during the show.

#### Turkey Creek 2010 Division Meet Registration Form

Advance Registration: \$4.00    Full Registration: \$6.00 (\$5.00 NMRA member) at door  
Children under 12 free with paid registration

**Tables (\$15.00) if paid by December 31, 2009, Starting January 2010 tables will be \$20.00 each**  
**Vendor set up Friday August 6<sup>th</sup> 5pm to 9pm**

		Tables (\$15.00)each	No. Registration \$4.00	Total Cost
Name:				
Address:				
City				
State Zip				
Telephone #:		Total Enclosed:		
E-Mail Address:			Scale Modeled	
More Registrant Names:				
<p>Make Checks Payable to: "Turkey Creek Division"</p> <p>Mail to: Turkey Creek Show, C/o Bob Jefferis, 6000 W. Richards Dr, Shawnee, KS, 66216-1721</p> <p>For more information contact Bob Jefferis at 913-631-4441</p>				



# J&L Hobby & Trains

## New Store

Odessa Outlet Mall Opposite side of Eastern Jackson County Mainliners big Layout  
Mile Marker 37A

### Store hours:

Monday, Tuesday, Wednesday, and Friday 10 am - 6 pm

Saturday 10 am - 4 pm

Closed Thursdays and Sundays.

### Contact Information

#### Telephone

(816) 633-5400

#### Postal address

1344 W Old Highway 40

Suite F20

Odessa, MO 64076-9601

#### EBay Store link:

<http://stores.ebay.com/Train-Store-MO>

Seller ID jltrainman

#### Electronic mail

General and Sales Information: [jltrain@attglobal.net](mailto:jltrain@attglobal.net)

Weekly newsletter: [jltrain@attglobal.net](mailto:jltrain@attglobal.net)

#### Web Site:

<http://pws.prserv.net/jltrain>


eid.mcor-nmra.org

# THE CROSSROADS OF EASTERN IOWA

**EID  
MCoR  
NMRA**

June  
10-13

- two days of informative clinics
- model judging, contest, and display
- 100-table train show
- prototype and industrial tours
- 15 home, club, & garden layout tours
- excursion on the Iowa Interstate RR
- banquet speaker: MR's Cody Grivno
- rail and non-rail sightseeing guides
- state of the art convention facility

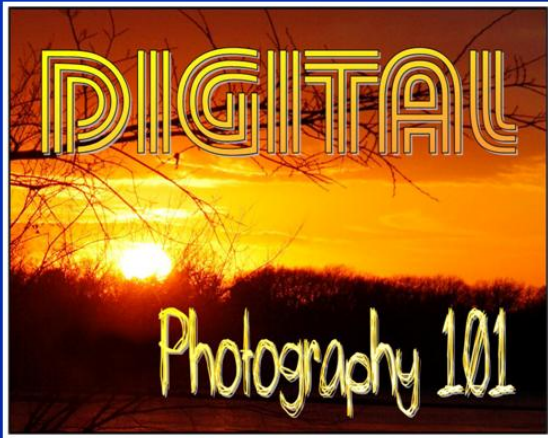


# CEDAR RAPIDS 2010

Presented by the Eastern Iowa Division  
Join us in celebrating the 60th anniversary of the Mid-Continent Region!







**SPECIAL INTEREST GROUP:**  
**Would you like to learn more about digital photography? Join Crossroads' Digital Photography class and meet others with the same interest.**



**Ron Morse, a seasoned and published photographer, will give you pointers on understanding your digital camera and taking photos.**

**This class has been expanded to five , two hour sessions. Classes start on 9/19/2009.**

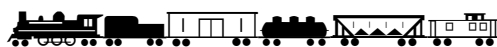
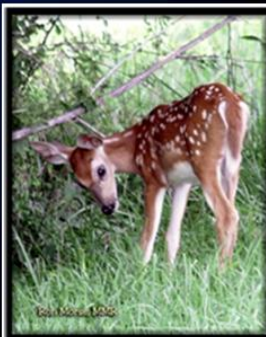
**The class is FREE but you must PREREGISTER.**

**This series is being offered by Ron and Crossroads Christian Church (Johnson Drive & Renner Road).**

**For more information, and/or an electronic brochure please contact Ron Morse, MMR at**

**913-894-6472**

**ronmorsemmr@gmail.com**



# 2010 Mid-Continent Regional Convention

## The Crossroads of Eastern Iowa



hosted by the  
**Eastern Iowa Division**  
June 10 - 13, 2010  
Cedar Rapids, Iowa



**Official Convention Site:**  
Kirkwood Community College  
Center for Continuing Education  
7725 Kirkwood Blvd. S.W.  
Cedar Rapids, IA 52404

and



**Official Convention Hotel:**  
Clarion Hotel & Convention Center  
525 33rd Avenue, S.W.  
Cedar Rapids, IA, US 52404



- **Thursday Night Ice Breaker:** Arrive early to pick-up your registration packet at the Clarion Hotel, which will include information about Thursday evening layout tours. After that, registration will take place at Kirkwood Community College starting on Friday morning, June 11<sup>th</sup>, 2010.
- **Prizes:** Special drawings will be held for convention registrants.
- **Model & Photo Contests:** NMRA judging on Saturday, June 12<sup>th</sup>, 2010.
- **Silent Auction:** A silent auction on Saturday, June 12<sup>th</sup>, 2010 for convention attendees.
- **Clinics:** A full slate of clinics will be held Friday and Saturday during the convention. If interested in giving a clinic, please contact Michael Armstrong at: [pikaaa@q.com](mailto:pikaaa@q.com)
- **Prototype Tours:** The GRANDIC Railway shops and PMX Industries in the Cedar Rapids area.
- **Train Excursion:** The Iowa Interstate Railroad will provide a 3-hour train ride on two of their business cars with an optional photo run by. Seating will be limited. *Note: the train is not handicap accessible.*
- **Banquet Dinner:** Saturday night, June 12<sup>th</sup> **Cody Grivno**, Associate Editor for Model Railroader Magazine and star of Cody's Office will be our banquet keynote speaker.
- **Layout Tours:** Home and club layouts open for tours all days of the convention.
- **Two-Day Train Show:** Over 90 tables for area dealers, local hobbyists, and other railroad groups. For information on tables, contact Whit Johnson at: [whitjohnson@mchsi.com](mailto:whitjohnson@mchsi.com)
- **Railfanning Guide:** A guide of railfanning spots in the Cedar Rapids / Iowa City corridor will be part of your registration.
- **Non-Railroad Related Activities:** This guide will be part of your registration.
- **Accommodations:** The Clarion Hotel and Convention Center will have a special \$89.95 rate for registered attendees. To get this rate, make your reservation **by May 20<sup>th</sup>, 2010** and be sure to mention the 2010 Mid-Continent Regional Convention. Contact them at 877-949-2992 or [www.clarioncr.com](http://www.clarioncr.com)



**Ozark Model Railroad Association  
Presents**

**Annual Fall Train Show & Swap Meet**

**Saturday Oct. 24th, 2009**

**9 am – 3 pm**

**Teamster Hall**

**1850 E. Division St. (East of Glenstone)**

**Springfield, Mo.**

**Railroad Memorabilia, HO, N, O, Lionel & G Scale**

**Lots of Model Trains for sale!**

**And Others Activities**

**Free Parking with easy access to show**

**Admission:**

**Adults - 13 & up - \$5.00**

**Children – 12 & under – FREE**

**When accompanied by an Adult**

**For more information on show, Contact:**

**Co-Chairman – Dale Irvine Email: [bowlanmrr@mchsi.com](mailto:bowlanmrr@mchsi.com)**

**Co-Chairman – Ted Beresky Email: [tberesky@hotmail.com](mailto:tberesky@hotmail.com)**

**Phone 417-459-6042**

**For Vendor information Contact:**

**Gary Mills – 417-725-1433**

**For more vendor information**

**Check out our website: <http://omra.homestead.com>**



# Layout Design and Operations Weekend 2009

September 25, 26 & 27

Tulsa, Oklahoma

Presented by the Indian Nations Division of the NMRA

In conjunction with the LDSIG and OPSIG

---

## Workshop Presentations

Saturday September 26<sup>th</sup> from 9:30am-4:30pm

- Paul J. Dolkos – Designing Baltimore’s Fell Street District.
- Marty McGuirk – Designing the Central Vermont
- Keith Jordan – Designing Los Angeles’ “The Patch”
- Several others are in the works.....

- ✓ Also, Birds of a Feather (discussion groups)
  - ✓ Bring your trackplans, photos, display boards and mockups to share with everyone, great place to solicit feedback on your layout!
  - ✓ Panel discussion
  - ✓ Conclude the day with layout open houses from 6pm to 10pm
- 

Local layout operating sessions:

Friday September 25<sup>th</sup> from 7pm-10pm

Sunday morning September 27<sup>th</sup> from 10am to 1pm

(Out of town and first time operators get preference,  
register early to secure a spot on one of the layouts!)

---

**Registration will be limited to 200. Don't miss out!**

(Registration form located on back)

Location:

**Hardesty Library**

**8316 E. 93rd St.**

(Just East of Memorial on 93rd St.)

**Tulsa, Oklahoma 74133**

Visit our web page for additional and updated information; follow the link to the meet at: [www.tulsanmra.org](http://www.tulsanmra.org)

***We look forward to seeing you in Tulsa!***



**\* TRAIN SHOW \***

# **KATE SHELLEY**

## **Division**

Robert Folkmann, Division Meet Registration Chairman  
MCoR, NMRA

**EIGHTEENTH Annual Fall Meet**

**Come One, Come All to The Annual Fall Meet.  
Enjoy Clinics, Silent Auction, Dealers, Dis-  
plays, Layouts, Door Prizes**

**Contest Categories: Diesel Locomotives; Passenger Cars;  
Cabooses; Gondolas with Load; Offline Structures;  
Bridges; Youth in all Categories**

**Photo Contest: Bridges, Color & B&W, Prototype & Model**

**WHERE: *United Community School***

**US Highway 30, Between Ames and Boone, IA**

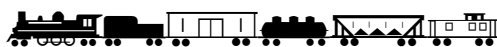
**WHEN: *November 7, 2009*, 9:00 AM-3:00 PM**

**Admission \$5.00 at the Door - Pre-Registration \$4.00**

**Info: *Bob Folkmann 515/232-8689***

***David Yetter 515/233-5665***

**Mailing Address: Kate Shelley Division, P. O. Box 474, Ames, IA 50010**



## THE SWITCHING LIST

\*=new since last issue

The Switching List contains all known Mid-Continent Region, NMRA, train shows and Division meetings. It also lists all known club shows and swap meets in the Mid-Continent Region (IA, IL, MO, AR, NE, KS, and OK). To list your event, send it to: garyonho@cox.net, or Gary Hemmingway, 3201 SW Stone Ave., Topeka, KS 66614. To subscribe, or unsubscribe, to The Switching List send an email to the above link. Look for us on the MCoR web site: www.mcor-nmra.org. Put me on your newsletter list.

### DIVISION MEETINGS

**KANSAS CENTRAL DIVISION** Meetings are at 1:00 pm. For the full schedule check the MCoR website or email: garyonho@cox.net. The next meeting is

**\*October 3, 2008** McPherson Museum/Mid-Kansas Model Railroad Club, 1130 E. Kansas St (US 56 Hwy) McPherson, KS: Hosts are John Snell, Michael Clark & Mid-Kansas Model Railroad Club. Coming East on I-70, take the I-135 exit to McPherson. Take the first exit into McPherson, US 56, turn right and travel about a mile and a half, across the overpass. The museum is about 2 blocks pass the first traffic light on the right after going over the overpass. There is a sign out front "Mid Kansas Model Railroad Club".

**GATEWAY DIV. (ST. LOUIS, MO)** meets 3rd Monday each month, 7:00 P.M. Odd numbered months: Trinity Lutheran Church, 14088 Clayton Road at Woods Mill Rd (Hwy 141), Ballwin, MO; Even numbered months: VFW Hall, O'Fallon, IL <http://www.gatewaynmra.org/division.htm>

**TURKEY CREEK DIV. (KANSAS CITY, MO & KS)** monthly meetings 4th Tuesday, 7:00 P.M. Johnson County Offices, NE Branch, 6000 Lamar, Shawnee Mission, KS (DMV Building on SW corner of Lamar and Martway)

**WESTERN HERITAGE DIVISION (OMAHA, NE / COUNCIL BLUFFS, IA)** meets second Saturday (except June and December) at noon. Sump Memorial Library, corner of Washington and Second Streets in Papillion (across from Runza). Visit [www.whdmra.org](http://www.whdmra.org) for more info and a map.

### EASTERN IOWA DIVISION

\* The Eastern Iowa Division has tentatively scheduled its next meeting for Saturday, May 2, 2009 at the Hawkeye Model Railroad Club in Coralville, Iowa. The start time is 9:00 AM. The meeting will include a short business meeting, a clinic on wiring a layout with DCC, merit judging and presentation of AP certificates, a "Bring & Brag/Show & Tell" session, and possibly an operating session on the Hawkeye Area Model Railroad Club layout. More information will be available on the Eastern Iowa Division web site, which is <http://eid.mcor-nmra.org/index.html> and through our newsletter - *The Wig-Wag* - which is also online at the same web address.

**INDIAN NATIONS DIVISION** meets at the New Hardesty Library at 8316 E. 93rd. St. (Just east of Memorial) in Tulsa, OK. The time is from 9:30am to 12:30pm. Each meeting we

have various presentations from clinics, to slide shows. After the meetings we have a layout tour at one of the members layouts. Meeting dates are: January 26, 2008, March 29, 2008, May 31, 2008, September 20, 2008, and November 19, 2008. Contact Dave Salamon at [drs\\_rr@yahoo.com](mailto:drs_rr@yahoo.com) for further information.

**\*KATE SHELLEY DIVISION** now meets the 4<sup>th</sup> Thursday at the Ames Public Library in Ames, Iowa. Time is 7 Pm to 8:45 PM. All are welcome to attend the meetings. The library is located at 515 Douglas Ave. We meet in the upstairs meeting rooms.

**PLATTE VALLEY DIV. (HASTINGS, GRAND ISLAND, KEARNEY, NE)** meets 2<sup>nd</sup> Tuesday of each month at 7:00 p.m. in members homes on a rotating basis. Info: John O'Neill, MMR, Div. Dir., 308-384-5011 or [jponeill@computerconcepts.com](mailto:jponeill@computerconcepts.com).

**WESTERN KANSAS DIVISION (GARDEN CITY, KS)** Meets every Monday evening from 7:00 P.M. to 9:00 P.M. at 4091/2 N. Main St. (second floor above "Stage" department store) 7 layouts on display (2-HO, 5-N) Operating sessions available Info: Robert Simmons, Division Director (620) 521-3591 or [ras@odsgc.net](mailto:ras@odsgc.net).

**INDIAN NATIONS DIVISION** Meets 5 times a year, remaining 2009 meetings: May 2, Theme - Steam Locomotives; September 19, Theme - Freight Cars; November 14, Theme - Structures/Dioramas. Meet from 9:30am-12:30pm at the Hardesty Library, 8316 E. 93rd St, Tulsa, Oklahoma. After the meeting we visit one of the local layouts. Web page: [www.tulsanmra.org](http://www.tulsanmra.org)  
Superintendent - Dave Salamon (918)272-5512 or [drs\\_rr@yahoo.com](mailto:drs_rr@yahoo.com)

**Division Directors, Train Show Chairs, or Club Show Chairs:** Let's get the word out about your 2008 or 2009 event! Get your information to Gary at any of the above addresses. **The Switching List is a service of Mid-Continent Region, NMRA.**

### TRAIN SHOWS & MEETS

\*= New or revised since last e-mailing

**SEP 25-27, 2009-- Layout Design and Operations Weekend 2009, Indian Nations Division of the NMRA, In conjunction with the LDSIG and OPSIG, Hardesty Library 8316 E. 93rd St., (Just East of Memorial on 93rd St.) Tulsa, Oklahoma;** Registration will be limited to 200. Don't miss out; Info: [www.tulsanmra.org](http://www.tulsanmra.org); for registration questions email: [ldopregistration@tulsanmra.org](mailto:ldopregistration@tulsanmra.org). If you want to operate email: [ldoperations@tulsanmra.org](mailto:ldoperations@tulsanmra.org)  
All other questions email: [ldopchairman@tulsanmra.org](mailto:ldopchairman@tulsanmra.org) Early bird registration before August 25th, 2009 is \$15.00 after that the registration is \$20.00

**OCT 4, 2009, 28th ANNUAL WASHINGTON MODEL RR SHOW AND SWAP MEET, Knights of Columbus Hall 606 West 3rd Street, Washington, IA 52353; : 9 am - 3 pm** Over 60 tables of dealers in items of all scales; Adults-\$4.00, children (4-12) \$1.00; Info: [meworley@iowatelecom.net](mailto:meworley@iowatelecom.net) or 319-653-3782



**OCT 4, 2009—COWBOY LINE DIVISIONAL MEET**, Prenger's Restaurant, Norfolk, NE, 8:30 am – 3:00 pm; Cost: NMRA members \$15, non-members \$16, Ladies Program \$15; includes coffee, pastry & lunch; clinics, model contest (structures & cars), show & tell, layout tour, silent auction.

**OCT 25, 2009—15<sup>th</sup> ANNUAL WTTC SWAP MEET**, 4-H building, 21<sup>st</sup> & Ridge, Wichita, KS, 9 am—3 pm. Adm \$5, under 12 free w/pd adult, Tables will be \$20 until September 26<sup>th</sup> and \$25 after September 26<sup>th</sup>. The day of the show tables will be \$30. Concessions available. Info: [www.wttcinc.org](http://www.wttcinc.org), or P. O. Box 4091, Wichita, KS 67204-0091 or Jason Ingels, [jingels208@yahoo.com](mailto:jingels208@yahoo.com) 913-961-8080, Jim Hickman, [jwhickman@att.net](mailto:jwhickman@att.net)

**NOV 28, 2009--THE JOPLIN MUSEUM COMPLEX MODEL RAILROAD SHOW AND SWAP MEET** 7th and Schifferdecker Streets in Schifferdecker Park between the golf course and swimming pool; 9:00 a.m. to 3:00 p.m.; attractions include several operating train layouts, over 65 tables of items for sale or trade from scale model trains, collectible antique electric trains, and train collectibles; admission: \$3.00, adults; 12 and under admitted free w/pd adult. All proceeds at the door go to benefit the Joplin Museum Complex. For more information, contact: Rick Gardner, (417) 673-4888; e-mail: [rickgardner@sofnet.com](mailto:rickgardner@sofnet.com); or visit: [www.tristatemodelrailroaders.com](http://www.tristatemodelrailroaders.com)

**DEC. 3-5 2009 WHITE RIVER VALLEY MODULAR RAILROAD CLUB OPEN HOUSE** at 251 St. James Street, Hollister, MO. There will be door prizes, free clinics & trains running. Due to limited space for clinics preregistration is required. For more information call T.P.A.Hobby center (417) 335-6624 E-mail [tpahobby@aol.com](mailto:tpahobby@aol.com) or Jim Dimatteo (417)

239-0436 [jbdimatteo@aol.com](mailto:jbdimatteo@aol.com).

**JAN 31 & FEB 1, 2010—WICHITA TRAIN SHOW & SWAP MEET, CHISHOLM TRAIL DIV., NMRA & ENGINE HOUSE HOBBIES**, Cessna Activity Center, 2744 George Washington Blvd., Wichita, KS, Sat: 9-5, Sun: Noon-4, Swap tables, Modular Layouts, Switching Contest, Model Contest, Photo Contest, Live Clinics & much more; Adm: \$6.00 for both days, Advance Table Registration includes 2 admission tickets, Before 12/31/2008 take off 10%, 8 foot tables are \$25 each, Info: Phil Aylward or Jon LaRoe, 1-316-685-6608, mail registration to 603 Chestnut, Halstead, KS 67056-2302 or [aylward1@cox.net](mailto:aylward1@cox.net)

**\*APR 11, 2010-- SPRINGFIELD TRAIN FAIR**, Illinois State Fairgrounds Orr Bldg., Springfield, IL, 10 am – 4 pm, Admission is \$4 per person and kids 10 and under are in for free! Contact person Tracy Bailey - [springfieldmodelrailroadclub@yahoo.com](mailto:springfieldmodelrailroadclub@yahoo.com)

**SEP 12, 2009-- BOEING EMPLOYEES RAILROAD SWAP MEET. St. Louis, MO-10 am—3 pm**, Greensfelder Recreation Complex at Queeny Park, 550 Wiedman Rd., St. Louis, MO 63011, Adm: \$3 children under 12 free w/pd adult, doors open for sellers setup at 8 am, Tables (30"x96") \$15.00, Info: Wayne Schimmel, VP/Swap Meet Conductor, Boeing Employee's Railroad Club, St. Louis, MO, [wwhtehrse@aol.com](mailto:wwhtehrse@aol.com) or call after 6:30 pm 636-668-6313 or mail: 733 Hwy Y, Winfield, MO 63389-2206.

**JUN 10-13, 2010—THE CROSSROADS OF IOWA MIDCONTINENT REGION CONVENTION CEDAR RAPIDS 2010, HOSTED BY EASTERN IOWA DIVISION, MCoR, NMRA**, Clarion Hotel & Convention Center, 525 33<sup>rd</sup> Avenue SW, Cedar Rapids, IA and Official

# Introducing the best deal in model railroading.

**Join the NMRA for 6 months for just \$9.95\*!**

## Sign me up!

Fill out this form and include your payment. **U.S.:** Send \$9.95 (U.S.) to NMRA-Rail Pass Membership, 4121 Cromwell Road, Chattanooga, TN 37421-2119. **Canada:** Send \$9.95 (Cdn) to NMRA-Canadian Rail Pass Membership, 69 Schroder Cres., Guelph, ON N1E 7B4, Canada.

Name \_\_\_\_\_

Address \_\_\_\_\_

City/State/Zip \_\_\_\_\_

Phone (\_\_\_\_) \_\_\_\_\_

Email \_\_\_\_\_

Check  Credit card

Credit Card # \_\_\_\_\_

Credit Card Exp \_\_\_\_\_

Signature \_\_\_\_\_

\*Rail Pass offer is for new members and those who have not been NMRA members for two years or more. Individuals can join at Rail Pass rates only once; membership renewal will be at the regular membership rate. Rail Pass members can attend conventions and participate in contests, but cannot vote or hold office and will not receive a New Member Pak.

- ◆ Have easy access to one of the world's largest railroad libraries...which includes over 100,000 prototype photos, 6,000 books, and over 50,000 modeling, prototype and historical society magazines
- ◆ Experience the fellowship and fun of getting modeling help and discussing the hobby with other members in your area
- ◆ Receive reduced rates on special insurance for your layout or collection
- ◆ Get admission to local model railroad meetings & events
- ◆ Receive 6 monthly issues of *Scale Rails* magazine
- ◆ Have access to standards info and data sheets
- ◆ Be a part of programs like "Modeling With The Masters," the Pike Registry, Estate Counseling, contests, clinics, the Achievement Program and more!



Visit [www.nmra.org](http://www.nmra.org) to see what you're missing!

**So much bang. So few bucks.**



**TURKEY CREEK DIVISION**  
**4954 Marsh Avenue**  
**Kansas City, MO 64129-2111**



**FIRST CLASS MAIL**  
**ADDRESS SERVICE REQUESTED 4955**

[mcor-nmra.org/divisions/turkeycreek/](http://mcor-nmra.org/divisions/turkeycreek/)

## **TURKEY CREEK DIVISION MEETING**

### **Turkey Creek Division Meetings and Events 2009**

September 22 Meeting at 7PM to 9:30 PM

October 27 Meeting at 7PM to 9:30 PM

November 24 Meeting at 7PM to 9:30 PM

December 15 Holiday Party All rooms A B C Meeting 7PM to 9:30 PM

