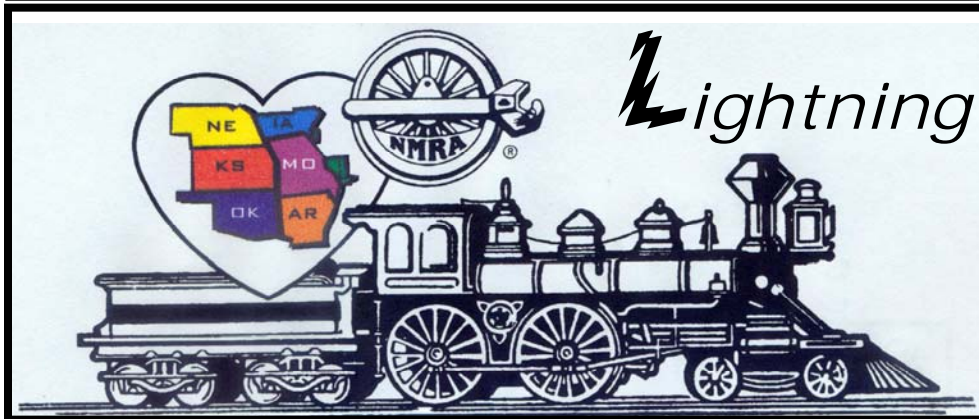


Turkey Creek Division



Lightning Slinger

VOL 24 NO. 10

"For all gauges and all ages"

October 2010

MONTHLY PUBLICATION OF THE TURKEY CREEK DIVISION
OF THE MID-CONTINENT REGION, NMRA

Meeting Tuesday November 23, 2010



Next Meeting October 26 at
Knox Presbyterian Church
9595 West 95th Street – Overland Park, KS

Up & Coming Clinics

Paul Richardson – Scratch building Flat Cars

Modeling in Foam by Kerry Lindenbaum

The clinic is on how to use Insulation board to form your scenery on your layout.
I will discuss tools, strengths and weakness.

I will show the tools and

I will discuss how to circumvent the weaknesses of this material.

I realize that scales Ho and up are too heavy to use this material for support for track but It is fine for supporting buildings and other features of your scenery.



From THE SUPER'S DESK....

Turkey Creek Supt letter for September 2010

Turkey Creek Supt letter for October 2010

Our vacation trip was cut short so I will be at the upcoming October meeting. At this month's meeting nominations for Turkey Creek Division officers for 2011 will be made. Louis has faithfully served as Division Clerk for five years and has expressed a desire to succeed Brad Morneau as division Director. Louis's election to that position would allow him to meet the AP program's "NMRA Official" requirement as a step toward his MMR. He has agreed to remain another year as Chairman of the Division Show next August.

The availability of railroad information in digital format is exploding. In the last issue of 'NMRA Magazine' (previously named 'Scale Rails') Gerry Leone, MMR reported that the NMRA Diamond Club has embarked on digitizing the *Kalmbach Memorial Library* (KML) collection so that NMRA members could access a document 24/7 on line. It is exciting to read that article and learn how Steve Priest's Historical Archives Services that has converted much of the Russell Lee Crump Memorial Library (RLCML) of AT&SF RR documents into digital format. The Linda Hall Library of Science, Engineering and Technology also of Kansas City has an extensive collection of railroad literature. Their collection '••• chronicles the technological advances of the 19th century •••' in that period journals such as the *American Railroad Journal* and *Mechanics Magazine* both which began in 1832. It is amazing that Kansas City is a major railroad town and is also the major force in developing the system that will provide such complete on line documentation of prototype and model railroad information. The KML documents are to begin being available in the spring of 2011. The RLCML can be accessed at www.atsfry.com, LHL at www.lindahall.org.

A sample from the LHL is this Baldwin Locomotive Works ad scanned from *Railway Age*, May 29, 1879. Samples of the KML images may be viewed in the current *NMRA MAGAZINE*.



The BNSF Foundation is funding the LHL project. Funding for the KML project is through contributions to the Diamond Club of NMRA and can be made via www.nmra.org/diamondclub. Kerry Lindenbaum and Paul Richardson will give the clinics this month. Next month Fred Hulen will provide an in depth clinic on the use of the various 'instant glues' and selecting the proper adhesive for each gluing task.

Enjoy the hobby,

Shelly



OFFICERS

Superintendent

Sheldon Levy
913-438-7065
shellylevy@everestkc.net

Paymaster

Jack Boren
HP: 913-962-2408
jbcmd1@me.com

Clerk

Louis O Seibel
HP: 913-393-3495
C: 913-927-6850
L-seibel@comcast.net

Division Director

Brad Morneau
HP: 913-897-0669
bmorneau@kc.rr.com

Train Show Chairman 2010

Louis O Seibel
HP: 913-393-3495
C: 913-927-6850
L-seibel@comcast.net

Membership Chair

Jack Rosenfield
913-451-2177
rosenfieldjack@gmail.com

L S Editor

Ted Tschirhart
HP: 816-861-3449
tedtschi@kc.rr.com

AP Merit Awards & Achievement

Joe B. Robertson, MMR
HP: 816-331-2773
piperva@aol.com

Past Superintendent

Larry Diehl
HP: 913-441-1605
ldiehl@aci-boland.com

Web Master

Paul Myers, MMR
HP: 816-734-3719
paulwmyers@kc.rr.com

Web

<http://www.tc-nmra.org>
Turkey Creek Division
IS A 501(C) (3)
ORGANIZATION

Turkey Creek Minutes for September 28, 2010
Meeting was called to order by Louis Seibel Clerk.
Sheldon Levy was out of town on a short vacation.

Joe Robertson's MMR gave out awards
Jack Boren Paymaster gave a short talk on the finances

Paul Richardson MMR had a White Elephant Exchange. There were six members that brought items.
The next exchange will be at the Holliday Party on December 14th.

Show and Tell section had a fair showing of support this will be done again in November.

At the October meeting nominations will be for the following positions Superintendent, Clerk, Paymaster, and Division Director.

Charles Stapleton MMR then gave the clinic on The Does, Don'ts and Maybes of Model Railroading. It was very interesting.

Some of the parts of the clinic will be on the web site in November along with the clinic at the September's meeting.

Next meeting will be at Knox Presbyterian Church, 9595 W 95th St. Overland Park, Kansas across from the Overland Park Fire Station.

Louis Seibel Clerk
See you all on October 26, 2010





Turkey Creek Division

December 14, 2010 (Tuesday) @ 7:00 PM
At our regular meeting place....

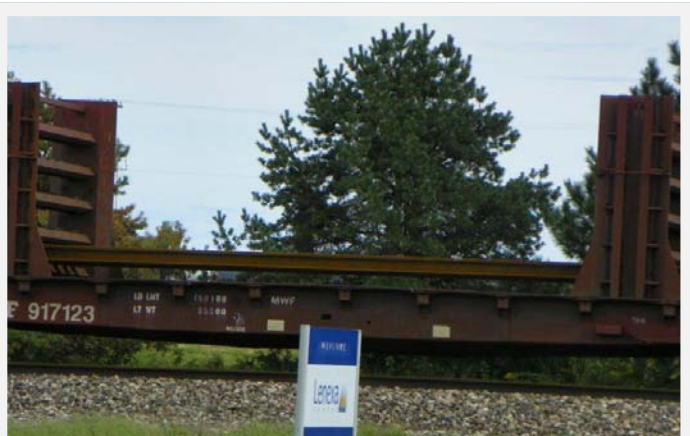


Midwest Meanderings



This PowerPoint® presentation was created from photographs taken by Ron Morse in Kansas, Missouri and Arkansas. This show includes scenic shots from all four seasons and includes *everything from butterflies to deer, sunsets, snow, flowers, fall leaves, birds, moon shots etc., etc.* ***This is really a beautiful show aimed at the Nature Lover.....*** 







GOMOTORBIDS.COM

The most popular online auction for automotive and racing collectibles

NOW HAS TRAINS!

- Daily auctions for trains and accessories from every era and for every scale & gauge!
- Incredible daily deals on overstocks and aged inventory!



- The most trusted auction on the internet. No fraud. No shill bidding. No worries!
- The best customer service in online auctions!



Visit now and sign up for your FREE membership!
WWW.GOMOTORBIDS.COM/TRAINS



THE SWITCHING LIST

*=new since last issue

The Switching List contains all known Mid-Continent Region, NMRA, train shows and Division meetings. It also lists all known club shows and swap meets in the Mid-Continent Region (IA, IL, MO, AR, NE, KS, and OK). To list your event, send it to: garyonho@cox.net, or Gary Hemmingway, 3201 SW Stone Ave., Topeka, KS 66614. To subscribe, or unsubscribe, to The Switching List send an email to the above link. Look for us on the MCoR web site: www.mcor-nmra.org. Put me on your newsletter list.

DIVISION MEETINGS

KANSAS CENTRAL DIVISION Meetings are at 1:00 pm. For the full schedule check the MCoR website or email: garyonho@cox.net. The next meeting is **October 2, 2008: Inman Depot Museum**: Going south on I-135 take exit 58 to Hutchinson. Inman is about 12 miles south on Highway 61. The Inman Depot is very visible from the 61 highway. There is a freshly painted RI caboose sitting beside it. I think we should meet there first, have a quick business meeting, tour the depot, and then go over to Scale Structures, Ltd. The latter is in an unmarked building on the other side of the highway, very visible but you wouldn't know what was there unless you've been there before. John Snell

GATEWAY DIV. (ST. LOUIS, MO) meets 3rd Monday each month, 7:00 P.M. Odd numbered months: Trinity Lutheran Church, 14088 Clayton Road at Woods Mill Rd (Hwy 141), Ballwin, MO; Even numbered months: VFW Hall, O'Fallon, IL <http://www.gatewaynmra.org/division.htm>

TURKEY CREEK DIV. (KANSAS CITY, MO & KS) monthly meetings 4th Tuesday, 7:00 P.M. Johnson County Offices, NE Branch, 6000 Lamar, Shawnee Mission, KS (DMV Building on SW corner of Lamar and Martway).

WESTERN HERITAGE DIVISION (OMAHA, NE / COUNCIL BLUFFS, IA) meets second Saturday (except June and December) at noon. Sump Memorial Library, corner of Washington and Second Streets in Papillion (across from Runza). Visit www.whdnmra.org for more info and a map.

EASTERN IOWA DIVISION

The EID Fall Meeting will be September 18th at the Cedar Rapids Area Chamber of Commerce, 424 First Avenue NE in Cedar Rapids, Iowa. Parking is free on Saturdays, so do not feed the parking meters! We will have a short meeting, silent auction, Bring & Brag / Show & Tell. I'm pulling together an interesting program on modeling. We will start at 9:00 am. The EID Annual / Winter Meeting will be 9am, January 15th, 2011 at the First Christian Church in Davenport, Iowa.

KATE SHELLEY DIVISION now meets the 4th Thursday at the Ames Public Library in Ames, Iowa. Time is 7 Pm to 8:45 PM. Due to Thanksgiving being the 4th Thursday we usually try to meet on the 3rd Thursday. Call Superintendent from NMRA web sight for latest information. All are welcome to attend the meetings. The library is located at 515 Douglas Ave. We meet in the upstairs meeting rooms. December we have NO meetings due to the holidays.

PLATTE VALLEY DIV. (HASTINGS, GRAND ISLAND, KEARNEY, NE) meets 2nd Tuesday of each month at 7:00 p.m. in members homes on a rotating basis. Info: John O'Neill, MMR, Div. Dir., 308-384-5011 or jponeill@computer-concepts.com.

WESTERN KANSAS DIVISION (GARDEN CITY, KS) Meets every Monday evening from 7:00 P.M. to 9:00 P.M. at 4091/2 N. Main St. (second floor above "Stage" department store) 7 layouts on display (2-HO, 5-N) Operating sessions available Info: Robert Simmons, Division Director (620) 521-3591 or ras@odsgc.net.

INDIAN NATIONS DIVISION Unless otherwise specified, all Indian Nations NMRA meets are held at the new Hardesty Library, 8316 E. 93rd. St., just east of Memorial Rd. in Tulsa, OK. The library opens at 9:00 am and the meetings start at 9:30 am. August 28, 2010 – Photography, November 20, 2010

- Structures/Dioramas **NEW** *Note new date. Web page: www.tulsanmra.org Superintendent - Dave Salamon (918)272-5512 or drs_rr@yahoo.com

OK Heartland Division of the NMRA meets in the even months in the Oklahoma City area. All who are interested in Model railroading are welcome. Info: www.okcnmra.org

Division Directors, Train Show Chairs, or Club Show Chairs: Let's get the word out about your 2010 or 2011 event! Get your information to Gary at any of the above addresses. **The Switching List is a service of Mid-Continent Region, NMRA.**

TRAIN SHOWS & MEETS

OCT 3, 2010--WASHINGTON,IOWA ANNUAL TRAIN SHOW AND SWAP MEET, KC Hall-608 West 3rd Street 9am to 3 pm \$4.00-Adults, Children under 10-\$1.00, 60 tables/15 dealers All Scales, Contact Mike Worley at meworley@iowatelecom.net for more info.

OCT 7-9, 2010—MISSOURI PACIFIC RAILROAD HISTORICAL SOCIETY CONVENTION, Sedalia, MO, Info: www.mopac.org

OCT 9, 2010—COWBOY LINE DIVISIONAL MEET, Salvo's layout room, Deshler, NE 8:30 am to 3 pm, Adm: \$5 NMRA, non-NMRA \$6, clinics, show & tell, modeling contest: structures and cars, photo contest: prototype and model BW or Color any size, door prizes, silent auction, tour Fairbury, NE Rock Island Depot, Info: Jim Van Delden, genjvan@msn.com, 402-833-5531.

OCT 16, 2010—CENTRAL ARKANSAS MODEL RR CLUB OPEN HOUSE, McGee Sports Center, 3800 College Ave., Conway, AR, 9 am—3 pm, FREE; Info: Daniel Gladstone, 501-269-3030, ca_mrc@yahoo.com, www.artrains.org.

OCT 23, 2010--The Ozarks Model Railroad Association's Fall Train Show, Springfield Catholic HS, 2340 S. Eastgate, Springfield, MO 9am to 3pm, Tables are \$20. Admission is \$5 adults, children under 12 are free with a paid adult and a family is \$10. Info: Ron Williams, MMR, rjwilliams1@mchsi.com.



OCT 23—24, 2010—3rd WESTERN KANSAS TRAIN SHOW, Ellis County Fairgrounds, 1343 Fairground Rd., Exit 157 on I-70, Hays, KS, Sat: 9 am—5 pm, Sun: 11 am—4 pm, Adm: \$5 adults, 12 and under free w/pd adult, 100 tables @ \$25 each, large operating layouts, food vendor on site, door prizes, KND Collectibles sponsor, Info: Kevin Keeler klk@mchsi.com.

OCT 30-31, 2010—SMALL RAIL GROUP SHOW & SWAP MEET, Great Mall of the Great Plains, 20195 W. 151st St., Olathe, KS, 9 am-4 pm both days, Adm: \$5, Tables \$25, 30,000 sq ft of operating layouts, vendors, clinics, Giant G scale club layout next door is open free to the public, Info: David Roberts: gscaleisfun@hotmail.com, (913) 406-3400

***OCT 31, 2010—16TH ANNUAL WICHITA TOY TRAIN CLUB TRAIN SHOW & SWAP MEET**, Sedgwick Co. Extension Center located at 21st and Ridge in Wichita, KS, 9 am-3 pm, Adm: Adult \$5, children under 12 free w/pd adult, . Tables are available to vendors at 7.00am the day of the show. Visit www.wttcinc.org for more information or to print a show flyer.

NOV 6, 2010—KATE SHELLY DIVISION 19TH ANNUAL MEET, United Community School located between Ames and Boone, Iowa, on US Hwy 30 (9 mi W of I-35/US 30 interchange) 9 a.m.—3:30 p.m., Adm: pre-pd, \$4, at door \$5, \$1 off for NMRA and full-time student, children under 13 free w/pd adult, Tables \$15 each includes dealer adm.; Clinics by national and local presenters, Door Prizes, Model Contests:

Diesel Locomotives, Amtrak Equipment, Freight Cars (restenciled), Steam Locomotives, Tank cars, Online Structures; Photo Contest color and black & white: Rolling stock (model), Rolling Stock (prototype). NMRA Merit Judging, Silent Auction, operating layouts, food & refreshments, operating layouts, layout tour after the show; Info: Bob Folkmann 515-232-8689.

NOV 6-7, 2010—MIDCONTINENT PROTOTYPE MODELERS, Lions Activity Center, 150 S. Main, Benton, KS, Sat: 9 – 5, Sun: 10 – 4. Admission for this event is \$10 if preregistered by Oct 22, 2010, \$15 not preregistered and at the door. Admission includes all clinics, display space for your models and a great time. Please note that space is limited and priority will be given to preregistrants to display. Contact mcpmmeet@hotmail.com for more information or visit us at our website <http://www.midcontinentprototypemodelers.org/>.

NOV 27, 2010—JOPLIN MUSEUM COMPLEX TRAIN SHOW AND SWAP MEET, Schifferdecker Park, 7th and Schifferdecker Streets, Joplin, MO; 9am to 3pm, Included will be several operating model railroad layouts along with over 65 tables of items for sale or trade. Admission is \$3 adult, children 12 and under admitted free w/pd adult. All proceeds at the door go to benefit the Joplin Museum Complex. For further information or table rental call Rick Gardner at 417-673-4888 or email rickgardner@sofnet.com. Tables rent for \$15 each. On the web at www.tristatamodelrailroaders.com

The Kansas City Garden Railway Society

is proud to be a part of the 27th annual National Garden Railroad Convention.

Kansas City is rich in railroad heritage from its very beginning; and it is fitting that we host our first ever convention in the region.

Our convention will be held in Overland Park, KS, a suburb 20 miles southwest of downtown Kansas City.

The convention site is the spacious

Overland Park International Trade Center at 115th and Metcalf.

We will have one of the biggest exhibition halls at any NGRC With over 70,000 sq. ft. available for vendor, manufacturers and special events.

We invite you to come and join the fun at the 27th annual National Garden Railroad Convention on June 21st-27th 2011 in the heart of America.

Contact: Dave Roberts
gscaleisfun@hotmail.com



I did not you email story
So here is the space
Send it to tedtschi@kc.rr.com.

DECAL SALE

ALL HO SCALE DECALS 50% OFF TILL AUG 31 2010
PRINT INTERNET SPECIAL ON YOUR ORDER BLANK

www.oddballsdecals.org

Tom Stolte

Internet special on Decals

from Oct 1 - Dec 31 all decals are 20% off all scales except G scale stock up and save
Tom Stolte

owner of Oddballs Decals

<http://oddballsdecals.org>

My prototype photos <http://oddballsdecals.rpicturearchives.net/>

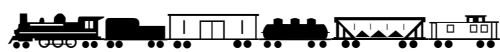
my photos of the Missouri Pacific <http://www.trainweb.org/mopac/>

aka Grumpy, one of the seven Dwarfs only taller :-)

only 7 feet tall, 213 centimeters tall or 2130 mm tall

MP, CNW, MKT, KCS, DRGW, BN, RI, MILW, ATSF, SLSF and SP Forever







Fall Swap Meet

Date of Sale: Nov 13, 2010

Time: Bus. Mtg @12:00,
Swap Meet follows till 3:00pm
Open to all members and their
friends. Free Admission!

Sump Public Library,
Papillion, NE



NOTE:

“Sale Items” are resale (or swap)
of “used” (i.e., prior
purchased) items only.

Restrictions: No flammable/toxic
liquids or food items. please

Western Heritage Division
Omaha, NE
<http://whdnmra.info>

Point of Contact: Bob Albano
Phone: 933-1308
E-mail: BOXCAR-BOB@JUNO.COM



SELLER's GUIDELINES

- **Eligibility:** Be a current NMRA member.
- **Type:** Model Railroad related items only.
Small clean actual railroad items are okay too (NMT 24" in length, no more than 5 lbs in weight).
- **Limits:** 15 sale items, if the item has 3 pieces to it, attach them together (tape, or a box); bring things that will sell or “price things to sell!” (\$1 - \$25 max)
- **Mark Your Price/ID:** Clearly mark the price (ex: \$5, not \$4.95), with your initial on the price sticker. [Example: \$5 / RA]
- **Money:** Bring \$\$\$ (“green stuff”), at least \$10 in small bills for making change. All sales and payments are cash only.... *Please no promises to pay at a later time offers.*
- **NMRA Share:** The local division receives 15% of all sales made. *(Ex: If you sell an item for \$10, the division gets \$1.50.)*
- **Paperwork:** Fill out sale sheet (provided) for items sold and what amount you charged.
- **Supplies:** bring plastic grocery sacks, small boxes to hold items you are selling.
- **Confirmation:** Please email Bob at: boxcar-bob@juno.com to reserve a spot NLT Nov. 7, 2010.

Name Tags: Please
wear your
division name
tag.



Bargains: Please
bring at least one
“bargain” item or
some “free stuff”
– make it fun for
yourself and for
all of us coming!

Pricing: Setting a
fair price for
your items will
keep frustration
out of the event...
items that are
worth \$150
probably should
not be in a \$1-\$25
swap meet.



NMRA WESTERN HERITAGE DIVISION

November 7, 2010

Fall Swap Meet

SELLER's GUIDELINES

All WHD members: We'll have our first annual club swap meet on Nov 13, 2010 following the regular business meeting at the Papillion Public Library until 3:00pm. See attachment for details.

SELLER's GUIDELINES

--Eligibility: Be a current NMRA member.

--Type: Model Railroad related items only. Small clean actual railroad items are okay too (NMT 24" in length, no more than 5 lbs in weight).

--Limits: 15 sale items, if the item has 3 pieces to it, attach them together (tape, or a box); bring things that will sell or "price things to sell!" (\$1 - \$25 max)

--Mark Your Price/ID: Clearly mark the price (ex: \$5, not \$4.95), with your initial on the price sticker. [Example: \$5/RA]

--Money: Bring \$\$\$, at least \$10 in small bills and coins, for making change. All sales and payments are cash only.... Please no promises to pay at a later time offers.

--NMRA Share: The local division receives 15% of all sales made. (Ex: If you sell an item for \$10, the division gets \$1.50.)

--Paperwork: Fill out sale sheet (provided) for items sold and what amount you charged.

--Supplies: bring plastic grocery sacks or small boxes to hold items you are selling (and buying).

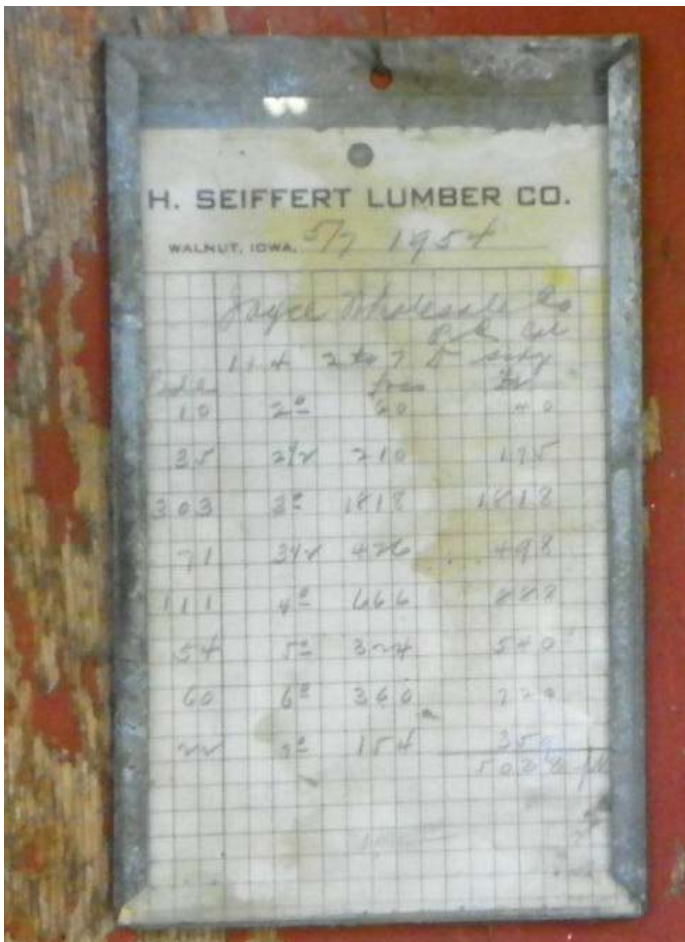
--Confirmation: -->>>> Please email Bob at: 'boxcar-bob@juno.com' to reserve a spot NLT Nov. 7, 2010.

****PLEASE DO NOT REPLY TO THIS EMAIL ACCOUNT!****

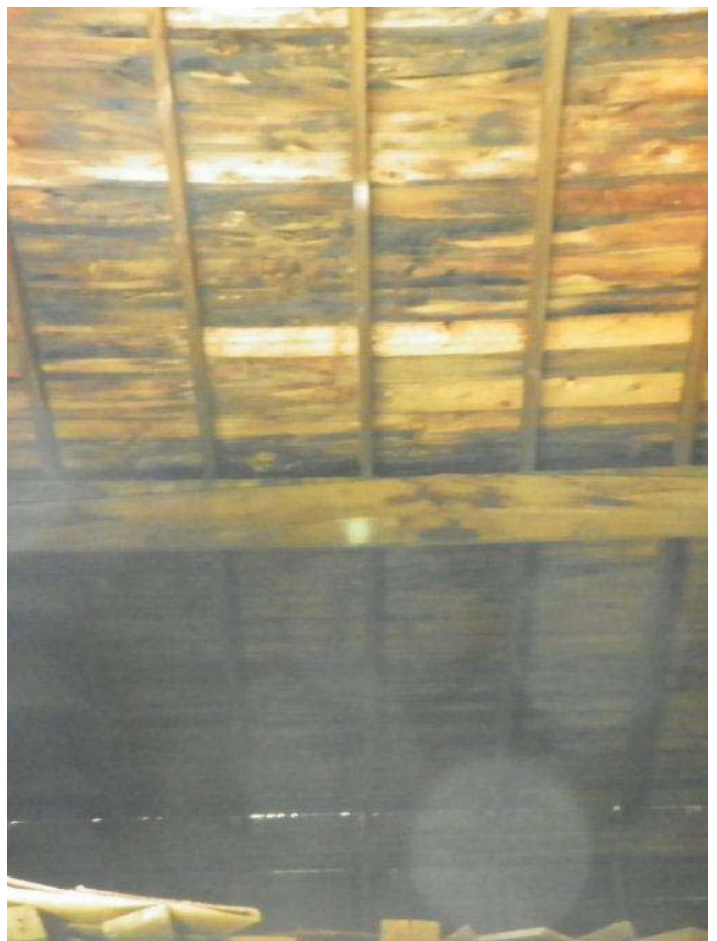
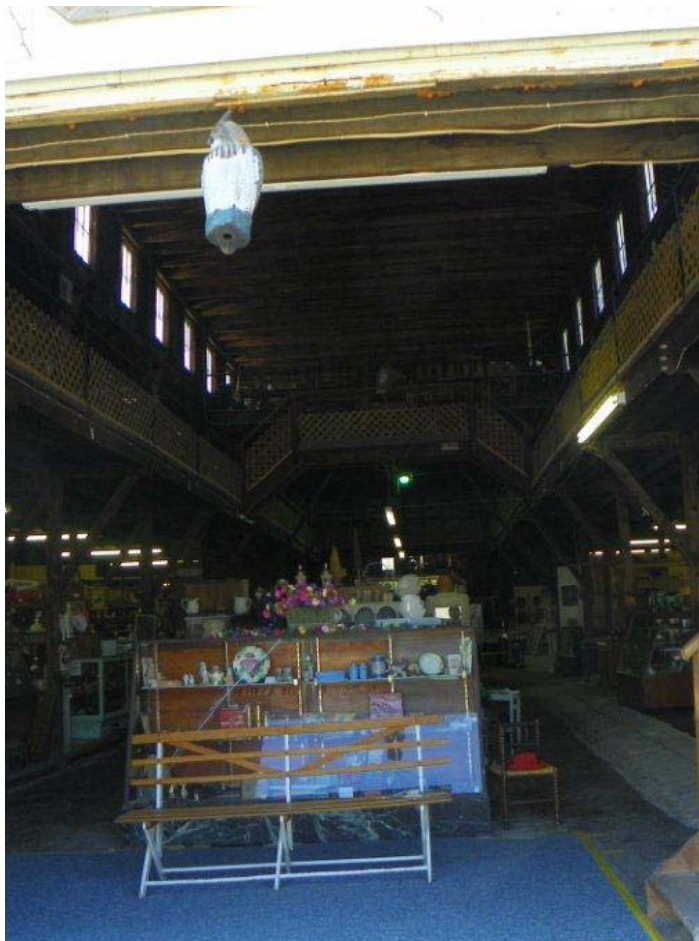
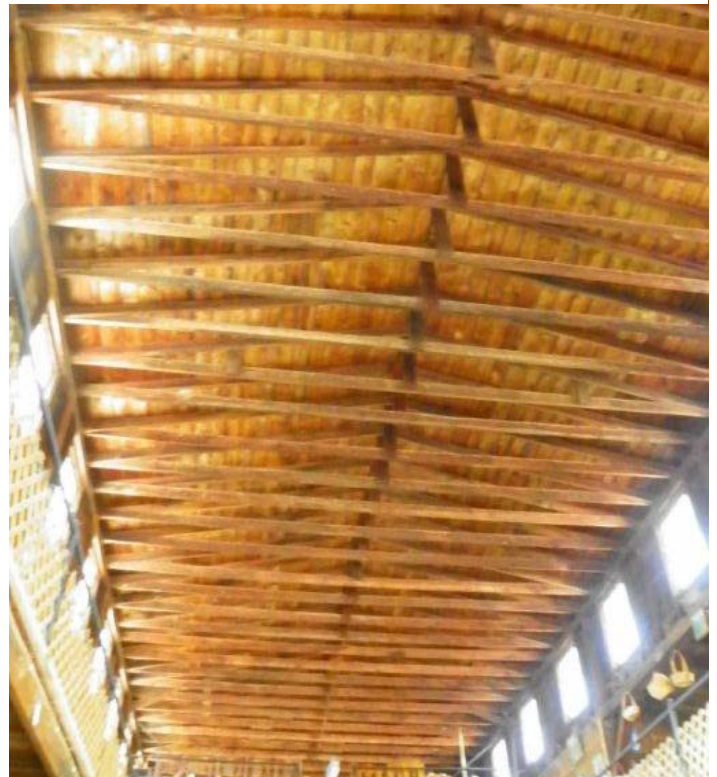
See you there!

Bob Albano





Lumber company was built in 1885 in Walnut Iowa is now a three story Antic Store







Dear fellow train enthusiasts,

There are 5 subjects in this email. Please read what is of interest to you and skip the rest ☺

1. (WORK) VACATION I will be gone from October 5 until October 22. I'm going to Europe to visit family and to visit some train stores and swap meets. During my absence the store will be open on Saturday 10/9 and Saturday 10/16. In the meantime you can reach me by email (preferred) or phone (modern technology I guess). Please feel free to place order(s) if you'd like; I process all orders from overseas so there will be no delays.

HOTLIST

Walthers came out with another "Hotlist." For some really good prices please see the attached spreadsheet. I also attached the sheets with the manufacturer numbers. Enjoy snooping around!

MÄRKLIN PART I Märklin has come out with their fall items. They were announced about 1 ½ week ago but I didn't want to post it until all the prices were firm. You can find the items at:

www.tototrains.com/2010marklinfall.htm.

MÄRKLIN PART II Besides the fall items Märklin also announced a limited special imprint car. The price is right and you can find the car at www.tototrains.com/2010marklinkoln.htm .

MÄRKLIN PART III The next announced item is something that Märklin rarely does. Later this year and early next year Märklin will release a set of 4 weathered steam locomotives! It is, of course, a very limited set and I have to order this set by Thursday. The prices are not firm yet but they will be between \$520.00 and \$560.00 per locomotive. I am guaranteeing this price range; they actually might turn out to be a little bit less in price. Please look at them at

www.tototrains.com/2010marklinweathered.htm . The locomotives are weathered by hand by Märklin. Please contact me right away if you are interested; first come, first served.

That is it for today; have a great week!

Jan

If you do not wish to receive newsletters from ToToTrains, please respond to this email.

Jan Bröcker

ToToTrains, LLC

European Trains and Accessories

Substantial Discounts on all Walthers Catalog Items

Store hours: Wed through Sat, 10:00 am - 4:00 pm

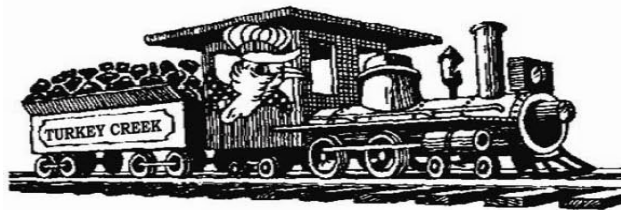
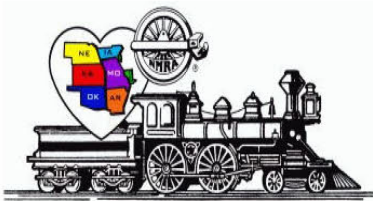
1031 Vermont Street, Suite A

Lawrence, KS 66044

785-766-0467 (phone) 785-843-2151 (fax)

www.tototrains.com info@tototrains.com





Turkey Creek Division Meet August 6, 2011

Lenexa Community Center
13420 Oak, Lenexa, KS (Pflumm & Santa Fe Drive)
Show Times 8:00 to 3:00
Layout Tours 3:30 to 9:00

Free Parking!

Clinics Start at 9:00 – a full slate of clinics covering many aspects of the hobby.

Model & Photo Contests – by NMRA judging and popular vote. Each model you entered into the contest will give you a chance in the Special Drawing to receive a \$50.00 gift voucher, up to a maximum of 5 chances.
Special Youth Award for the best overall youth model entry.

Door Prizes – From lots of different manufacturers and local hobby shops

Display Layout and Layout Tours – In addition to the display layout at the meet, several local modelers will be opening their homes to layout tours in the afternoon and evening. Layout tour maps will be available at the show to paid registrants.

Swap Tables and Railroad Groups – Expect to find more than 90 tables from area dealers, local hobbyists and other railroad groups. Two registrations with each vendor table rental. Additional registrations: \$4.50 each. Table rental: \$16.50 each if paid for by January 31, 2011, after that date \$22.00 each. (All rates include Sales Tax)

Vendor set up Friday August 5th 5pm to 9pm

For information on tables and special requests contact Robert Jefferis at jeffbobj@everestkc.net or 913-631-4441

Food and Refreshments – Scout Troop 92 will have food and refreshments available during the show.

Turkey Creek 2011 Division Meet Registration Form

Advance Registration: \$4.50 by July 10, 2011 - *Additional door prizes will be set aside for advance registrants*
Full Registration at the door: \$7.00 (\$6.00 NMRA member)
Children under 12 free with paid registration (All rates include sales tax)

Name: _____

Address: _____

City: _____ State: _____ Zip: _____ Telephone: _____

E-Mail Address: _____

Table Rental \$16.50 per table by January 31, 2011 No. of Tables: _____ Total amount \$ _____

Table Rental \$22.00 per table after January 31, 2011 No. of Tables _____ Total amount \$ _____

Total Encl. \$ _____ Check # _____

More Registrations: _____

Make checks payable to "Turkey Creek Division"

Mail to: Turkey Creek Show, C/O Larry Diehl, 11229 Nall, Suite 140, Leawood, Kansas 66211

For more information contact: Louis Seibel, L-seibel@comcast.net, 913-927-6850 or 913-393-3495

Mark your calendars! Turkey Creek Division Meet will be August 11, 2012 – that's the second Saturday.





**LAYOUT DESIGN AND
OPERATIONS WEEKEND
TULSA, OK**

March 18, 19 & 20

Presented by the Indian Nations Division of the NMRA
In conjunction with the LDSIG and OPSIG

Location:

**Shriners Temple
2808 South Sheridan Rd.
Tulsa, Oklahoma 74129**

Workshop Presentations

Saturday March 19th from 8:00am-5:00pm

- Tony Koester – 2 presentations
- Doug Gurin – 2 presentations
- Riley Triggs – 1 presentation
- Keith Robertson – 1 presentation
- Check web page for more information on presenters....

- ✓ Layout Design Challenge – See web page for additional details
- ✓ Bring your trackplans, photos, display boards and mockups to share with everyone, great place to solicit feedback on your layout!
- ✓ Panel discussion
- ✓ 3 Operating sessions with several layouts available for each session

Local layout operating sessions:

Friday March 18th from 6pm-9pm

Saturday March 19th, 7pm-10pm

Sunday morning March 20th from 10am to 1pm

(Register early to secure spots as an operator on the layouts.)

Visit our web page to register using Pay Pal and for updated information;

<http://ldopsigmeet.tulsanmra.org/>

We look forward to seeing you in Tulsa!



Layout Design and Operations Weekend 2011

March 18, 19 & 20

For registration questions email: ldopregistration@tulsanmra.org

For Layout Design Challenge questions email: ldopchallenge@tulsanmra.org

All other questions email: ldopchairman@tulsanmra.org

REGISTRATION FORM:

Please mail to:

Carl Schorfheide

LDOP Weekend

7245 S. 92nd Ave, Apt. #8

Tulsa, OK 74133

(Cash or check accepted; make checks payable to: Eastern Oklahoma Division)

Name: _____

Address: _____

Phone Number: _____

Email Address: _____

☐ EARLY BIRD REGISTRATION BEFORE January 1st, 2011 is \$20.00

AFTER January 1st, 2011 REGISTRATION is \$25.00

☐ Lunch - make your own Sandwich Bar \$8.00

☐ Polo Shirt \$25.00 write in size _____ (2XL and larger add \$2.00)

☐ Yes, I would like to operate on the local layouts

☐ I am just attending the Workshop Presentations will not be operating

I am a member of the following: (this is just a survey for our own information; your info will not be distributed)

☐ NMRA

☐ LDSIG

☐ OPSIG

Register early to secure spots as an operator on the layouts!

(For Internal use below the line)

Date Received:

Registration #:



TURKEY CREEK DIVISION
4954 Marsh Avenue
Kansas City, MO 64129-2111



FIRST CLASS MAIL
ADDRESS SERVICE REQUESTED 4955

mcor-nmra.org/divisions/turkeycreek/

TURKEY CREEK DIVISION MEETING

Meeting and Show Dates for Turkey Creek Division 2010

Meeting October 26

Meeting November 23

Meeting December 14

