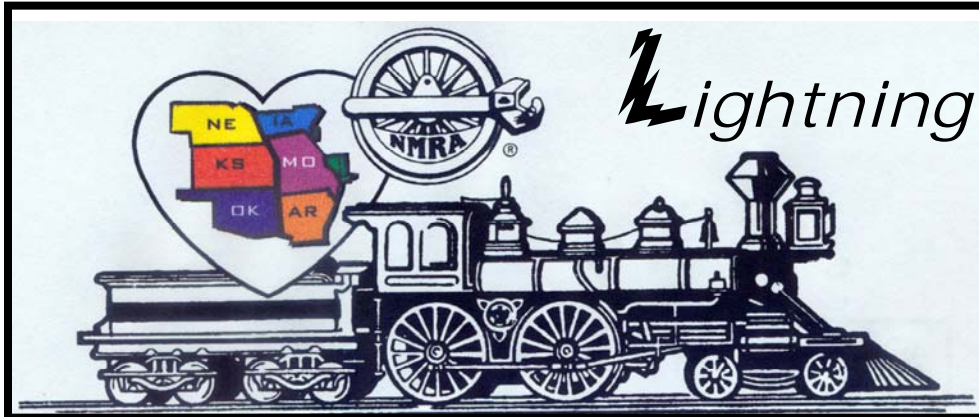


# Turkey Creek Division



*Lightning Slinger*

VOL 24 NO. 12

"For all gauges and all ages"

December 2010

MONTHLY PUBLICATION OF THE TURKEY CREEK DIVISION  
OF THE MID-CONTINENT REGION, NMRA

## Turkey Creek Division Annual Holiday Party December 14, 2010

Come One Come All

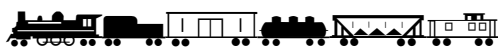
Help Celebrate the Last Meeting of  
Turkey Creek Division's 25<sup>th</sup> Year

Cake, Coffee, and Many Treats

Program by Ron Morse MMR on Midwest Meanderings

White Elephant Exchange

Annual MMR's Picture



## ***From THE SUPER'S DESK....***

Hi There

This is my last "Superintendents Message" as I finish out this year in having the opportunity as your superintendent. In November we elected Turkey Creek Division's officers for 2011

Superintendent: Lionel Smith

Clerk: Larry Diehl

Paymaster: Jack Boren

Director: Louis Seibel

I have enjoyed serving as the super for these past twelve months and with a bit of nostalgia looked back at the Divisions accomplishments. A major function of the NMRA and its parts is to encourage knowledge and techniques to our members. This is fostered by the Achievement Program (AP) of the association. In our 2010 meetings we acknowledged the accomplishments of members by presenting them with awards. Three Turkey Creek members Fran Hale, Floyd Brittan and Brad Morneau received their MMR plaques. In addition there were 14 AP awards to 10 members - - Floyd Brittan, Jack Ferris, Fran Hale, Gary Hankins, Ken Jenkins, Shelly Levy, Brad Morneau, Roger Percival, Vance Reed, and William Scheerer.

These accomplishments led me to look back at the history of Turkey Creek's (TC) AP accomplishments. The MMR's of TC include Warren Weston- MMR #26, the earliest, and Brad Morneau-MMR #450, the latest. There are 21 other current MMRs in the Division. Then adding in Larry Long MMR and Pete Bellows MMR to the count of TC MMR, the Division has produced one out of every 20 MMRs in the National; Yeah Turkey Creek J J.. Furthermore Doug Taylor and Marty Vaughn are in that elite handful which have achieved all 11 AP certificates. Miles Hale and Jim Eudaly are right behind them with 10 certificates each. The challenge is for the TC members to continue learning and serving the hobby this way. Our thanks to Joe Robertson MMR is the Division AP chairman and Marty Vaughn MMR is the National chairman - - thanks guys. And while doing the thank you I personally want to add my thanks the Division officers this past year - - - Louis Seibel - Clerk, Jack Boren-Paymaster, Brad Morneau-Director, Jack Rosenfield -Membership Chairman, Ted Tschirhart-Newsletter Editor, and Paul Myers MMR-Webmaster

As we end the year we want to document Turkey Creek's achievement program with a photo of current MMR members of the division. This is my personal request that if you are an MMR please attend the December meeting, its the 2<sup>nd</sup> Tuesday, December 14<sup>th</sup> instead of the 4<sup>th</sup> Tuesday.

I thought that Fred Hulen's surprise at his clinic last month will stick with us. Thank you for that extra and we appreciate that the remaining glue bottles will be door prizes for the 2011 TC show. This meeting our annual holiday meeting. Again Ron Morse has agreed to provide a presentation of his "Midwest Meanderings". Louis and Marie Seibel will supply coffee and cake and everyone else may add their goodies to the festivities. You are encouraged to bring something for the 'white elephant' gift exchange.

Looking ahead to 2011 my best wishes for the new officers of TC and to each of you this festive season.

Enjoy the hobby,

Shelly

# Minutes from November 23<sup>rd</sup> Turkey Creek Division Meeting

Sheldon Levy Call the meeting to order.

Sheldon had found the camera and box at the meeting place. He has painted the box, it now has pictures and list of what is to go into it.

We had a couple of visitors Craig Hatch and Jack (did not get last name). Jack Boren Paymaster said that there was no change in the bank account. Joe Robertson MMR presented awards to Ken Jenkins Merit Awards for the following Trestle, Sand Tower, Co-op Elevator, Morganville Depot, Bud's Tires, Freight Station Clay Center Kansas, Depot Clay Center, and UP Coal Tower. Then Joe gave him Master Builder Structures. Joe Robertson MMR presented Vance Reed Master Builder Cars. Joe Robertson MMR presented Brad Moreau his MMR Certificate and Paul Richardson MMR presented Brad his MMR Plaque.

Sheldon asked if there were any other members of the group that would like to run for office. The candidates are Lionel Smith Superintendent, Jack Boren Paymaster, Larry Diehl Clerk and Louis Seibel Director. Pat Harriman MMR asked if the nominations be approved as read and Kerry Lindenbaum Seconded and buy vote of the members it was approved.

Ward Parkway Mall is home to two Model Railroad Clubs. Weekend Engineers and Southern KC Model Railroad Historical Society they are open Saturday and Sunday from noon to five.

Paul Richardson MMR said that we will have a White Elephant Exchange at the December meeting.

Louis Seibel Clerk reminded members that the December meeting will be on the 14<sup>th</sup> and it will be the Annual Holiday Party with Ron Morse MMR doing the program Midwest Meanderings. Louis said that there would be cake and coffee, and asked if everyone would bring some type of deserts or snacks. Also he added that there will be a picture of all of the MMR's present at the meeting.

Louis also added that there was to be a small display set up at the Olathe Main Library Thursday, Saturday, and Sunday the first week of December. He asked for volunteers Brad Moreau and Larry Diehl said they would help.

Brad Moreau MMR and Paul Richardson MMR will start up building cars at Brads home on December 11, 2010.

Louis Seibel Clerk

## OFFICERS

### Superintendent

Sheldon Levy  
913-438-7065  
[shellylevy@everestkc.net](mailto:shellylevy@everestkc.net)

### Paymaster

Jack Boren  
HP: 913-962-2408  
[jbcmd1@me.com](mailto:jbcmd1@me.com)

### Clerk

Louis O Seibel  
HP: 913-393-3495  
C: 913-927-6850  
[L-seibel@comcast.net](mailto:L-seibel@comcast.net)

### Division Director

Brad Morneau  
HP: 913-897-0669  
[bmorneau@kc.rr.com](mailto:bmorneau@kc.rr.com)

### Train Show Chairman 2010

Louis O Seibel  
HP: 913-393-3495  
C: 913-927-6850  
[L-seibel@comcast.net](mailto:L-seibel@comcast.net)

### Membership Chair

Jack Rosenfield  
913-451-2177  
[rosenfieldjack@gmail.com](mailto:rosenfieldjack@gmail.com)

### L S Editor

Ted Tschirhart  
HP: 816-861-3449  
[tedtschi@kc.rr.com](mailto:tedtschi@kc.rr.com)

### AP Merit Awards & Achievement

Joe B. Robertson, MMR  
HP: 816-331-2773  
[piperva@aol.com](mailto:piperva@aol.com)

### Past Superintendent

Larry Diehl  
HP: 913-441-1605  
[ldiehl@aci-boland.com](mailto:ldiehl@aci-boland.com)

### Web Master

Paul Myers, MMR  
HP: 816-734-3719  
[paulwmyers@kc.rr.com](mailto:paulwmyers@kc.rr.com)

### Web

<http://www.tc-nmra.org>  
Turkey Creek Division  
IS A 501(C) (3)  
ORGANIZATION

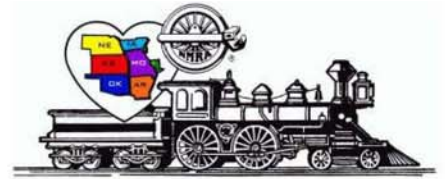




## Mid-Continent Regional Convention

Hosted by the  
Cowboy Line Division

June 16-19, 2011



### Official Convention Hotel:

Rodeway Inn  
2206 Market Lane  
Norfolk, NE 68701



### Official Convention Site:

Northeast Community College  
Lifelong Learning Center  
801 E Benjamin Ave.  
Norfolk, NE 68701

- **Thursday Evening Welcome Reception:** Arrive early and you can pick up your registration packet at the Rodeway Inn. Enjoy Norfolk hospitality with refreshments, snacks, clinics and an old fashion ice cream (custard) social.
- **Friday registration** opens at the Lifelong Learning Center on the Northeast Community College campus at 8:00 am, Friday.
- **Silent Auction** on Friday for convention attendees
- **Prototype Tour** on Friday afternoon of NUCOR Steel Mill, Louis Dreyfus Ethanol Plant, and NE Central RR yards and facilities going to or from on a transfer caboose.
- **Wine Tasting, Art & Museum Tour** on Friday afternoon starting with lunch at Reeder's, a stop at the Johnny Carson exhibit at the Elkhorn Valley museum and tour and wine tasting at the Cuthills Winery.
- **Clinics:** there will be a full slate of clinics Thursday evening and all day Friday and Saturday morning. For more information or to sign up to give a clinic contact Dennis Brandt (402-992-2415) or email: [dennisbrandt44@gmail.com](mailto:dennisbrandt44@gmail.com) or [info.convention.2011@gmail.com](mailto:info.convention.2011@gmail.com).
- **Special Air Brushing Workshop:** Local professional artist Karl Reeder will be conducting a 2 ½ hour hands on air brushing clinic at this studio. The clinic will be offered Friday and Saturday morning. You need to bring your own air brush clean and ready to go along with a project to weather. Practice cars will be furnished. For more information contact Dennis Brandt. (very limited)
- **Women's program** will include three or more crafts and Women related clinics including card making, knitting, and others. If you would like to share a craft please contact Dennis Brandt.
- **Contest:** Be sure and bring models for the contest all NMRA categories including photos will be available. **Special Nucor Scrap Car Contest** for anyone wanting to enter a scrap car loaded with your special load of scrap. This Contest will be judged by Nucor employees.
- **Saturday Night Banquet:** a delicious buffet served by the First Choice Caterers at the NECC College. Keynote speaker is Dr. Rudy Daniels, Railroad author and railroad historian.
- **Layout Tours:** Many of the local modelers will have their layouts open Friday evening for your touring pleasure. Maps will be available at the Convention.
- **Model Train Show:** over 100 tables will be available for area vendors, rail organizations, and other interested individuals. Local Boy Scout Troup will provide refreshments.
- **Accommodations:** The Rodeway Inn will have a special rate of \$55.00 plus tax for registered convention goers. They will provide a delicious hot breakfast to get your going in the morning. To get this special rate make your reservation before May 20, 2011 and mention 2011 Mid-Continent Regional Convention. Contact them at: (402) 371-9779 or [www.roadwayinn.com](http://www.roadwayinn.com)



**Mid-Continent Regional Convention 2011**  
**hosted by: Cowboy Line Division**

**Registration Form**

(Please send this registration form with your payment  
**\$40.00 registration until March 31, 2011**)

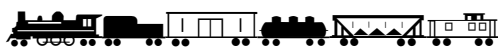
Activity	Cost	Number	Total
Advance NMRA member Registration (Before March 31, 2011)	40.00		
Advance Non-NMRA member Registration (Before March 31, 2011)	50.00		
Spouse Registration	10.00		
NMRA member Registration (After April 1, 2011)	60.00		
Advance Non-NMRA member Registration (After April 1, 2011)	70.00		
Proto Tour (limited to 30) Includes: tour of NUCOR steel plant, Ethanol Plant; ride on Transfer Caboose to NE Central RR yards and office. Also includes snacks and refreshments	35.00		
Wine Tasting Tour (Limit 15) Includes: Lunch, Johnny Carson exhibit at the Elkhorn Valley Museum, Cuthills winery wine tour and wine and cheese tasting	35.00		
Air Brush Painting Workshop (Friday 9:00-11:30) (limit 8)	35.00		
Air Brush Painting Workshop (Saturday 9:00-11:30) (limit 8)	35.00		
Special Build a DPM structure and take home (Sat 10:00-12:00) Fran and Miles Hale (limited to 20, includes kit)	5.00		
Banquet Dinner (Saturday night)	25.00		
Train Show Vendor Tables (30" x 6')	20.00		
Electricity <input type="checkbox"/> Yes <input type="checkbox"/> No			
2011 Polo Convention Shirt      circle your size ( S   M   L   XL   XXL )	30.00		
2011 Convention Patch	5.00		
2011 Convention Pin - 1 included with registration	3.00		
	<b>Total Enclosed:</b>		\$

**Checks or Money Orders only (no credit cards)**

Name: \_\_\_\_\_ NMRA #: \_\_\_\_\_  
Address: \_\_\_\_\_ Email: \_\_\_\_\_  
City: \_\_\_\_\_ State: \_\_\_\_\_ Zip: \_\_\_\_\_ Phone: \_\_\_\_\_

Spouse: \_\_\_\_\_

Make checks/money order payable to:  
MCoR Convention 2011  
Mail to: James van Delden, registrar  
902 Nebraska Street  
Wayne, NE 68787







# Turkey Creek Division

**December 14, 2010 (Tuesday) @ 7:00 PM**  
**At our regular meeting place....**



## Midwest Meanderings



This PowerPoint® presentation was created from photographs taken by Ron Morse in Kansas, Missouri and Arkansas. This show includes scenic shots from all four seasons and includes *everything from butterflies to deer, sunsets, snow, flowers, fall leaves, birds, moon shots etc., etc.* ***This is really a beautiful show aimed at the Nature Lover.....***





# GOMOTORBIDS.COM

The most popular online auction for automotive and racing collectibles

## NOW HAS TRAINS!

- Daily auctions for trains and accessories from every era and for every scale & gauge!
- Incredible daily deals on overstocks and aged inventory!



- The most trusted auction on the internet. No fraud. No shill bidding. No worries!
- The best customer service in online auctions!



Visit now and sign up for your FREE membership!  
[WWW.GOMOTORBIDS.COM/TRAINS](http://WWW.GOMOTORBIDS.COM/TRAINS)



## THE SWITCHING LIST

\*=new since last issue

The Switching List contains all known Mid-Continent Region, NMRA, train shows and Division meetings. It also lists all known club shows and swap meets in the Mid-Continent Region (IA, IL, MO, AR, NE, KS, and OK). To list your event, send it to: garyonho@cox.net, or Gary Hemmingway, 3201 SW Stone Ave., Topeka, KS 66614. To subscribe, or unsubscribe, to The Switching List send an email to the above link. Look for us on the MCoR web site: [www.mcor-nmra.org](http://www.mcor-nmra.org). Put me on your newsletter list.

### DIVISION MEETINGS

**KANSAS CENTRAL DIVISION** Meetings are at 1:00 pm. For the full schedule check the MCoR website or email: garyonho@cox.net. The next meeting is **October 2, 2008: Inman Depot Museum**: Going south on I-135 take exit 58 to Hutchinson. Inman is about 12 miles south on Highway 61. The Inman Depot is very visible from the 61 highway. There is a freshly painted RI caboose sitting beside it. I think we should meet there first, have a quick business meeting, tour the depot, and then go over to Scale Structures, Ltd. The latter is in an unmarked building on the other side of the highway, very visible but you wouldn't know what was there unless you've been there before. John Snell

**GATEWAY DIV. (ST. LOUIS, MO)** meets 3rd Monday each month, 7:00 P.M. Odd numbered months: Trinity Lutheran Church, 14088 Clayton Road at Woods Mill Rd (Hwy 141), Ballwin, MO; Even numbered months: VFW Hall, O'Fallon, IL <http://www.gatewaynmra.org/division.htm>

**TURKEY CREEK DIV. (KANSAS CITY, MO & KS)** monthly meetings 4th Tuesday, 7:00 P.M. Johnson County Offices, NE Branch, 6000 Lamar, Shawnee Mission, KS (DMV Building on SW corner of Lamar and Martway).

**WESTERN HERITAGE DIVISION (OMAHA, NE / COUNCIL BLUFFS, IA)** meets second Saturday (except June and December) at noon. Sump Memorial Library, corner of Washington and Second Streets in Papillion (across from Runza). Visit [www.whdnmra.org](http://www.whdnmra.org) for more info and a map.

### EASTERN IOWA DIVISION

The EID Fall Meeting will be September 18th at the Cedar Rapids Area Chamber of Commerce, 424 First Avenue NE in Cedar Rapids, Iowa. Parking is free on Saturdays, so do not feed the parking meters! We will have a short meeting, silent auction, Bring & Brag / Show & Tell. I'm pulling together an interesting program on modeling. We will start at 9:00 am. The EID Annual / Winter Meeting will be 9am, January 15th, 2011 at the First Christian Church in Davenport, Iowa.

**KATE SHELLEY DIVISION** now meets the 4<sup>th</sup> Thursday at the Ames Public Library in Ames, Iowa. Time is 7 Pm to 8:45 PM. Due to Thanksgiving being the 4th Thursday we usually try to meet on the 3rd Thursday. Call Superintendent from NMRA web sight for latest information. All are welcome to attend the meetings. The library is located at 515 Douglas Ave. We meet in the upstairs meeting rooms. December we have NO meetings due to the holidays.

**PLATTE VALLEY DIV. (HASTINGS, GRAND ISLAND, KEARNEY, NE)** meets 2<sup>nd</sup> Tuesday of each month at 7:00 p.m. in members homes on a rotating basis. Info: John O'Neill, MMR, Div. Dir., 308-384-5011 or [jponeill@computer-concepts.com](mailto:jponeill@computer-concepts.com).

**WESTERN KANSAS DIVISION (GARDEN CITY, KS)** Meets every Monday evening from 7:00 P.M. to 9:00 P.M. at 4091/2 N. Main St. (second floor above "Stage" department store) 7 layouts on display (2-HO, 5-N) Operating sessions available Info: Robert Simmons, Division Director (620) 521-3591 or [ras@odsgc.net](mailto:ras@odsgc.net).

**INDIAN NATIONS DIVISION** Unless otherwise specified, all Indian Nations NMRA meets are held at the new Hardesty Library, 8316 E. 93rd. St., just east of Memorial Rd. in Tulsa, OK. The library opens at 9:00 am and the meetings start at 9:30 am. August 28, 2010 – Photography, November 20, 2010 - Structures/Dioramas **NEW** \*Note new date. Web page: [www.tulsanmra.org](http://www.tulsanmra.org) Superintendent - Dave Salamon (918)272-5512 or [drs\\_rr@yahoo.com](mailto:drs_rr@yahoo.com)

**OK Heartland Division of the NMRA** meets in the even months in the Oklahoma City area. All who are interested in Model railroading are welcome. Info: [www.okcnmra.org](http://www.okcnmra.org)

**Division Directors, Train Show Chairs, or Club Show Chairs:** Let's get the word out about your 2010 or 2011 event! Get your information to Gary at any of the above addresses. **The Switching List is a service of Mid-Continent Region, NMRA.**

### TRAIN SHOWS & MEETS

**DEC 11-12, 2010—MACTRAX SHOW & SWAP MEET**, McPherson Community Bldg., 122 E Marlin, McPherson, KS, Sat: 10-5, Sun 11-4, Adm: \$4 adults, 10 and under free w/pd adult, Tables \$10 each, Info: Jerry Bruce [skytracker@ks-usa.net](mailto:skytracker@ks-usa.net).

**JAN 15-16, 2011—WORLD'S GREATEST HOBBY**, Omaha, NE

**JAN 29-30, 2011—GREAT TRAIN EXPO**, St Charles Convention Center, St. Charles, MO

**FEB 12-13, 2011—WICHITA TRAIN SHOW & SWAP MEET, CHISHOLM TRAIL DIV., NMRA & ENGINE HOUSE HOBBIES**, Cessna Activity Center, 2744 George Washington Blvd., Wichita, KS, Sat: 9-6, Sun: 11-4, Swap tables, Modular Layouts, Switching Contest, Model Contest, Photo Contest, Live Clinics & much more; Adm: \$6.00 for both days, Advance Table Registration includes 2 admission tickets, Before 12/31/2008 take off 10%, 8 foot tables are \$25 each, Info: Phil Aylward or Jon LaRoe, 1-316-685-6608, mail registration to 603 Chestnut, Halstead, KS 67056-2302 or [aylward1@cox.net](mailto:aylward1@cox.net)

**\*FEB 19, 2011—10<sup>TH</sup> ANNUAL LAWRENCE MODEL RAILROADERS TRAIN SHOW**, Douglas County Fairgrounds, 2120 Harper St., Building 20, Lawrence, KS; Info: James Taylor, [jimforegolf@hotmail.com](mailto:jimforegolf@hotmail.com).





**MAR 12, 2011—BOEING EMPLOYEES' RAILROAD CLUB-ST LOUIS RAILROAD SWAP MEET** Greensfelder Recreation Complex at Queeny Park 550 Wiedman Rd., St. Louis, MO 63011; 10 am – 3 pm, Tables \$15 each, Adm: \$3.00 children under 12 free w/pd adult; doors open for sellers' setup at 8 am, Info: Wayne Schimmel after 6:30 pm Central Time (636) 668-6313 or 733 Hwy Y, Winfield, MO 63389-2206, e-mail wmschimmel@gmail.com

**\*MAR 18-20, 2011--INDIAN NATIONS DIV & LDSIG & OPSIG LAYOUT DESIGN AND OPERATIONS CONFERENCE**, Shriner's Temple, 28th & Sheridan, Tulsa, Oklahoma, Info: [www.tulsanmra.org](http://www.tulsanmra.org) Superintendent - Dave Salamon (918)272-5512 or [drs\\_rr@yahoo.com](mailto:drs_rr@yahoo.com)

**JUN 16-19, 2011 Mid-Continent Region's Annual Regional Convention, Hosted by the Cowboy Lines Division, Official Convention Site:** Northeast Community College Lifelong Learning Center, 801 E Benjamin Ave. Norfolk, NE 68701  
**Official Convention Hotel:** Roadway Inn 2206 Market Lane Norfolk, NE 68701 (402) 371-9779 or [www.roadwayinn.com](http://www.roadwayinn.com)

**SEPT 17, 2011--2011 Frisco Convention**, Frisco Building, Springfield, MO, Info: Ron Williams MMR, [rjwilliams1@mchsi.com](mailto:rjwilliams1@mchsi.com)

**The Switching List is a service of Mid-Continent Region, NMRA.**

**TOTOTRAINS,LLC**

**SPECIALIZING IN EUROPEAN TRAINS**  
**MÄRKLIN/TRIX/LGB/ROCO/FLEISCHMANN**

**EVERY DAY DISCOUNTS ON**  
**WALTHERS CATALOG ITEMS: 20%-35%**

**HOURS: WED-SAT: 10.00AM-4.00PM**

**OR BY APPOINTMENT**

**785-766-0467**

**[WWW.TOTOTRAINS.COM](http://WWW.TOTOTRAINS.COM)**

**[INFO@TOTOTRAINS.COM](mailto:INFO@TOTOTRAINS.COM)**

**1031 VERMONT STREET, SUITE A**  
**LAWRENCE, KS 66044**

## The Kansas City Garden Railway Society

is proud to be a part of the 27th annual National Garden Railroad Convention.

Kansas City is rich in railroad heritage from its very beginning; and it is fitting that we host our first ever convention in the region.

Our convention will be held in Overland Park, KS,  
a suburb 20 miles southwest of downtown Kansas City.

The convention site is the spacious  
Overland Park International Trade Center at 115th and Metcalf.

We will have one of the biggest exhibition halls at any NGRC With over 70,000 sq. ft. available for vendor, manufacturers and special events.

We invite you to come and join the fun at the 27th annual

National Garden Railroad Convention on  
June 21st-27th 2011 in the heart of America.

Contact: Dave Roberts  
[gscaleisfun@hotmail.com](mailto:gscaleisfun@hotmail.com)



## The 2011 Thousand Lakes Region Convention

# Three Rails, Three States

**May 20-22, 2011**  
**Dubuque, Iowa**



- Tours to IEL Barge, Rentex Chemical, and Eagle Window & Door, plus the 4th St. Elevator – the steepest inclined railroad in the world
- Modeling clinics, modeling contests, and layout tours
- Optional riverboat cruise and paddlewheeler lunch
- Amazing railfanning, with the ICE/DME, CN, and BNSF -- up to 35 trains a day!
- A wide variety of non-rail activities, including a craft fair, Dubuque Old Home Enthusiasts tour, Mississippi River Museum & Aquarium, two casinos, and Dubuquefest
- Just \$60 base Convention registration (includes clinics, social, and banquet). A la carte menu for other activities.
- Make room reservations now at the Dubuque Holiday Inn (563-556-2000).

Visit [www.thousandlakesregion.org](http://www.thousandlakesregion.org) now for the link to our video plus the registration form after Feb 1.



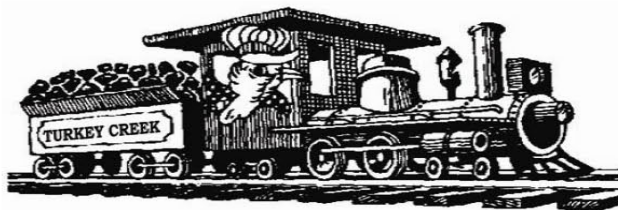
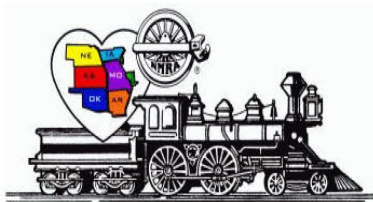
### Frank's Train Shop

15105 Metcalf Ave.  
Stanley, Kansas 66223  
[Frankstrainshop.com](http://Frankstrainshop.com)  
Frank Fisher Engineer

We Buy Train Collections  
Small, Large, and Wholly Cowl  
(913) 681-6830 shop  
(913) 710-4331 cell







## Turkey Creek Division Meet

**August 6, 2011**

**Lenexa Community Center**

**13420 Oak, Lenexa, KS (Pflumm & Santa Fe Drive)**

**Show Times 8:00 to 3:00**

**Layout Tours 3:30 to 9:00**

**Free Parking!**

**Clinics Start at 9:00** – a full slate of clinics covering many aspects of the hobby.

**Model & Photo Contests** – by NMRA judging and popular vote. Each model you entered into the contest will give you a chance in the Special Drawing to receive a \$50.00 gift voucher, up to a maximum of 5 chances.  
Special Youth Award for the best overall youth model entry.

**Door Prizes** – From lots of different manufacturers and local hobby shops

**Display Layout and Layout Tours** – In addition to the display layout at the meet, several local modelers will be opening their homes to layout tours in the afternoon and evening. Layout tour maps will be available at the show to paid registrants.

**Swap Tables and Railroad Groups** – Expect to find more than 90 tables from area dealers, local hobbyists and other railroad groups. Two registrations with each vendor table rental. Additional registrations: \$4.50 each. Table rental: \$16.50 each if paid for by January 31, 2011, after that date \$22.00 each. (All rates include Sales Tax)

**Vendor set up Friday August 5<sup>th</sup> 5pm to 9pm**

For information on tables and special requests contact Robert Jefferis at [jeffbobj@everestkc.net](mailto:jeffbobj@everestkc.net) or 913-631-4441

**Food and Refreshments** – Scout Troop 92 will have food and refreshments available during the show.

### Turkey Creek 2011 Division Meet Registration Form

**Advance Registration: \$4.50 by July 10, 2011** - *Additional door prizes will be set aside for advance registrants*

Full Registration at the door: \$7.00 (\$6.00 NMRA member)

Children under 12 free with paid registration (All rates include sales tax)

Name: \_\_\_\_\_

Address: \_\_\_\_\_

City: \_\_\_\_\_ State: \_\_\_\_\_ Zip: \_\_\_\_\_ Telephone: \_\_\_\_\_

E-Mail Address: \_\_\_\_\_

**Table Rental \$16.50 per table by January 31, 2011** No. of Tables: \_\_\_\_\_ Total amount \$ \_\_\_\_\_

Table Rental \$22.00 per table after January 31, 2011 No. of Tables \_\_\_\_\_ Total amount \$ \_\_\_\_\_

Total Encl. \$ \_\_\_\_\_ Check # \_\_\_\_\_

More Registrations: \_\_\_\_\_

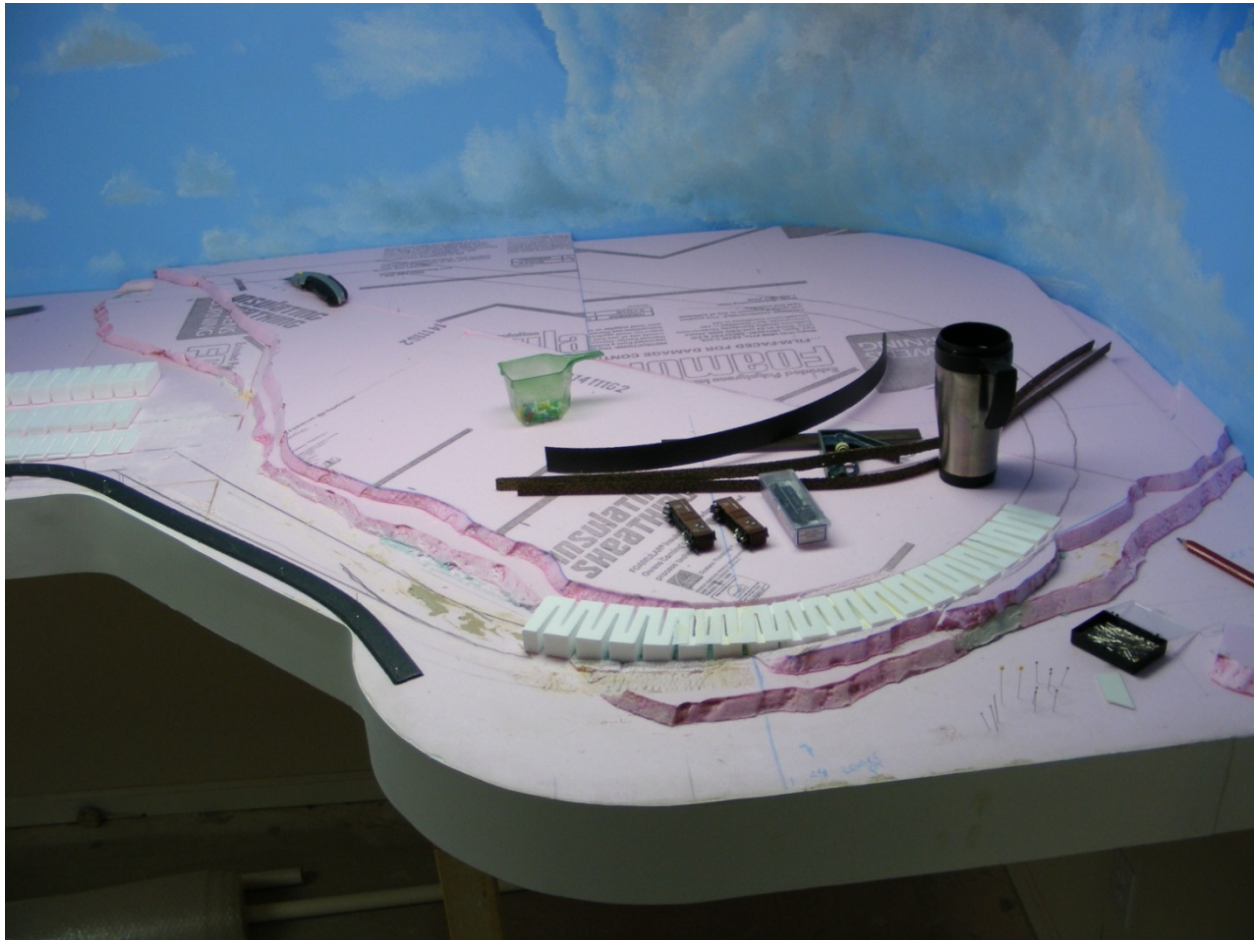
**Make checks payable to "Turkey Creek Division"**

**Mail to: Turkey Creek Show, C/O Larry Diehl, 11229 Nall, Suite 140, Leawood, Kansas 66211**

**For more information contact: Louis Seibel, [L-seibel@comcast.net](mailto:L-seibel@comcast.net), 913-927-6850 or 913-393-3495**

**Mark your calendars! Turkey Creek Division Meet will be August 11, 2012 – that's the second Saturday.**





## Table of Contents

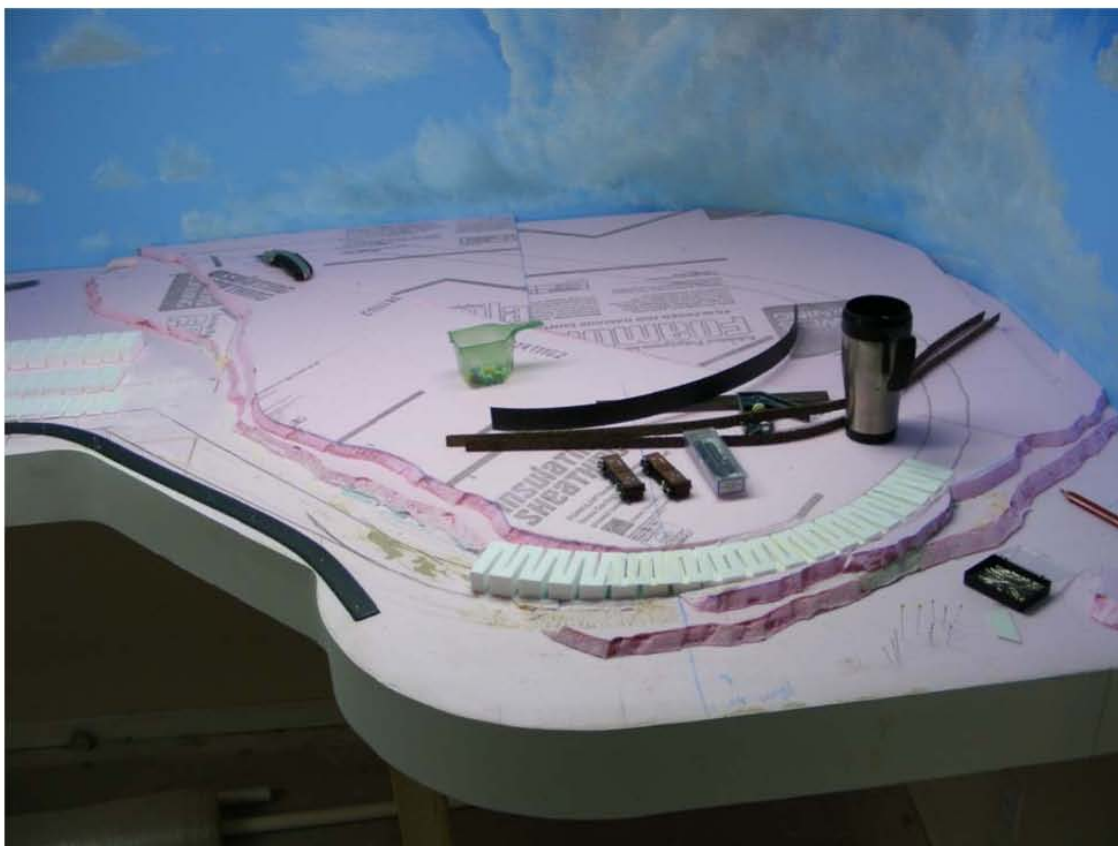
<a href="#">Introduction: .....</a>	<a href="#">3</a>
<a href="#">Now Let's Get Started: .....</a>	<a href="#">3</a>
<a href="#">Strengths verse Weaknesses: .....</a>	<a href="#">4</a>
<a href="#">Strengths: .....</a>	<a href="#">4</a>
<a href="#">Weaknesses .....</a>	<a href="#">4</a>
<a href="#">Tools: .....</a>	<a href="#">5</a>
<a href="#">Cutting: .....</a>	<a href="#">5</a>
<a href="#">Shaping: .....</a>	<a href="#">6</a>
<a href="#">Gluing: .....</a>	<a href="#">7</a>
<a href="#">Painting: .....</a>	<a href="#">7</a>
<a href="#">Adding Trees and Other Scenic Elements .....</a>	<a href="#">8</a>
<a href="#">Water Effects and Foam board .....</a>	<a href="#">8</a>
<a href="#">Conclusion: .....</a>	<a href="#">8</a>





## Using Insulation Board for Layout Scenery

---



1

No basket weave necessary to structure shape of hills, rivers or mountains



It is easy to cut and shape

This material can be cut using saws, knives both hot and cold

This material is easily shaped using wire brushes to remove material to create rounded hill tops, the sides of rivers or railroad cuttings

This can also be shaped using sandpaper to smooth the material after you have finished using the brushes.

### Weaknesses

Ok let us get to reasons that you may not like using this material for your layout. I now need to present the weakness of using insulation board for scenery.

Limits type of paint products and how I apply the paint

Do not want to use oil based paints because the chemistry of the paint will react with the board and destroy your scenery

Do not want to use spray cans of paint because the propellant used will also react with the insulation board to destroy it

If I want to use washes to color my hill side, cutting or river bank, I must first use a white acrylic paint to prime the material. This covers the blue or pink color of the material

Limits type of materials used to create water effects

Must use an acrylic material to create water effects because compounds that create heat can melt the insulation board if it gets hot enough.

Must not use any substance that might interact with the insulation board and dissolve it both destroying the scenery and possibly producing poisonous gas in the process

If you want to use some material for creating water that will react to the insulation board, you must make sure that your lake bed, river bed, etc. has been coated in plaster. So you would still need to use plaster for the bottom and sides of your water effect. And then, you might still need to make sure your material for creating water does not get too hot during curing.

Cannot be used for roadbed material for scales greater than N

Insulation board just is not strong enough to support the weight of larger engines and cars so plywood would need to be under the insulation board which eliminates the need to use the board for flat layouts.

Material is bulky

It only comes in 4ft by 8ft sheets so it cannot be loaded into a car or for that matter a SUV unless you have one of the biggest models on the road.

If you have a large SUV or pickup then no problem but the Lowes and Home Depot stores have rental trucks. That is how I had to haul my insulation board home. And there are other rental options or friends, if you know one with a truck.

### Tools:

When working with insulation board, I need to be able to do two things to turn plain board into realistic scenery. First I need to be able to cut the board into pieces that fit into my layout or be able to cut pieces to the rough shapes of my hills, valleys, rivers and other shapes I need to form my scenery. Second, I need to be able to shape the cut pieces into the final form for painting, detailing out with trees and grass, etc.

### Cutting:

Knives are divided into two types which are hot and cold. Which you use depends on what you want to do in your scenery.

Hot knives leave a hard film that is difficult to work with while cold knives dull easily when cutting insulation board but do allow additional shaping after the board has been cut.

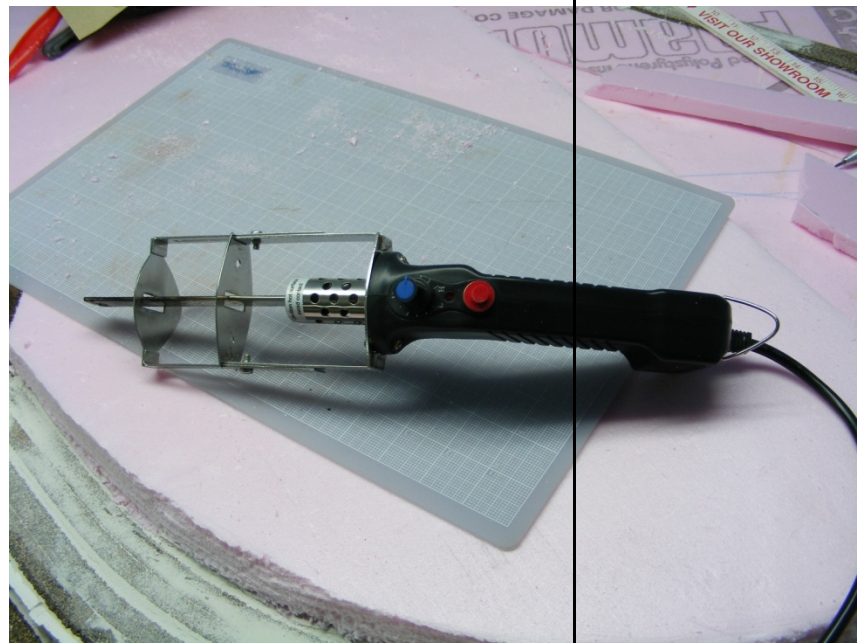
Hot knives (these are available from Micro-Mark, the Scribe tool is also available at Hobby Lobby)





**Crafter's heavy duty hot knife**

Temperature control from 225 to 750 degrees  
Has removable hot blade protector  
Cuts easily through all thickness of board  
Useful for cutting and shaping



Hot wire scroll table for precision cutting and mitering.

Have not used this but would provide miter control if you want to hot cut all of your scenery pieces

Hot wire foam cutter called hand tool in picture to right.

Useful to shape foam before you glue it down.

Its shape would not make it useful for shaping after gluing or for cutting large thickness of foam board.

Scribe tool which is a metal rod that gets hot enough to melt the foam board.

Is good for light weight shaping and making holes.

Not useful for cutting large thickness of foam board or heavy duty scenic molding.



Precision Knives (these are available at Hobby Lobby, Hobby Stores and Micro-Mark)

These come in various shapes and sizes.

They have a handle that can be unscrewed to use different attachment blades of different lengths.

They work well for shaping and for cutting thinner thicknesses of foam board but not for thicker pieces.



Saws which can be divided into specialty saws made for use on foam board and sheet rock saws which you can also use to cut foam board. These saws will cut through any thickness of foam board but I would not use them to do the cutting of the board to size but to shape the foam board after it has been attached or just before it is attached. These saws tend to tear up the board as they cut it.

Foam Board Saw (I have only seen this at Micro-Mark).

This is a 9" long saw that is built for the special purpose of cutting foam board.

It can be used to cut foam board before or after application to the layout. I would use this to complete my basic or first shaping of the board.

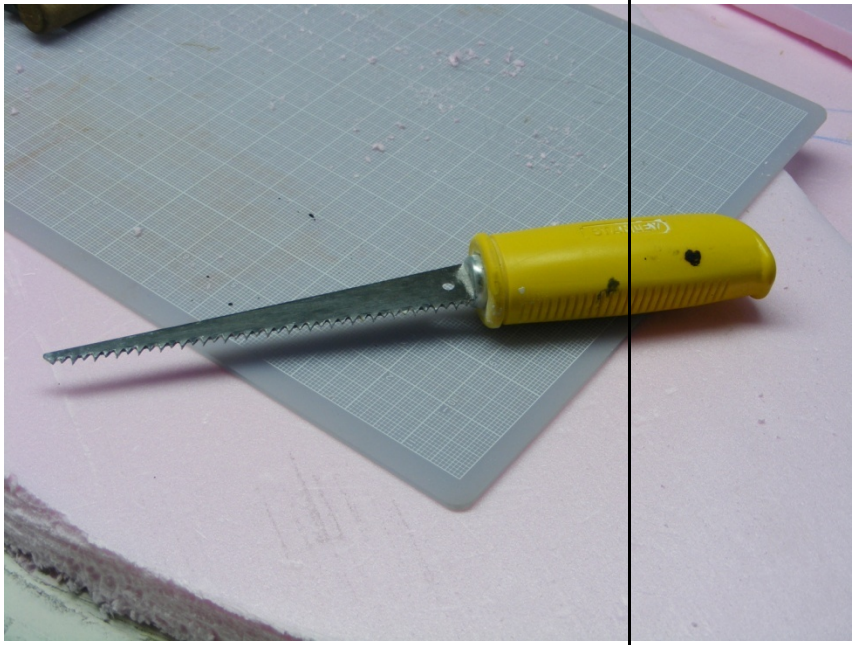
To cut the hill or other feature to the approximate size.

It allows you to remove large amounts of material at one time.





Keyhole saw which can be found at hardware stores, Home Depot, Sears, in fact, any place that sells tools. This saw is used for cutting holes in sleet rock and wood. It can be used like the foam board saw. The teeth are larger in this saw so they tear up the foam board more so be careful. Otherwise you will remove more material than you intend to remove.



### Shaping:

Keyhole saw, shown above, is also useful to dig out rivers and valleys. This tool should be used first because it takes off a lot of material and leaves the surface very rough. I have always used the wire brush after using the keyhole saw to smooth the surface.

#### Picks

Useful for digging out material to add depth to the weathering of the rock cuttings. They also are useful for adding other scenic elements such as trees, fences, posts, signs, etc.



## Wire Brushes



Wire brushes are used to take the foam board that has been cut to the final stage of developed scenery. Wire brushes are good for howling out indentations, creating exposed rock on the sides of cuttings, smoothing the tops of hills and creating fields, streams and rivers. Brushes are made

Steel – can be found in hardware stores, the Home Depots. Anywhere were you buy tools you will find these brushes.

They come in different widths. Some have scraper blades and some don't. They do a good job of removing material to round corners, tops of hills and other shaping jobs needed to create your scenery.

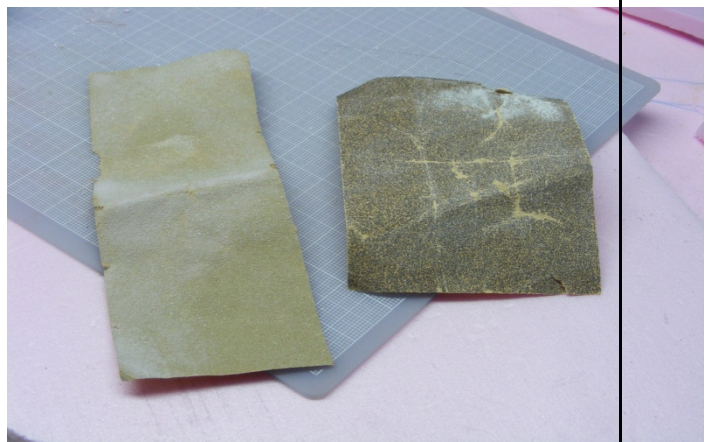
brass – where steel brushes are designed to scrape off paint, brass brushes are designed to clean brushes, files and other clean – up jobs. The bristles are not as hard and therefore don't remove as much material. These are good brushes to use as the final touch up brush.

Brushes also come in both wide and narrow varieties which are used differently to produce different scenic effects:

Wide brushes are good for shaping larger sections of foam board, like rounding off the tops of hills or creating major valleys, rivers etc. They work well for the first shaping of a cutting.

Narrow brushes are idea for adding texture to the face of a cutting to simulate a rocky surface.

## Sandpaper



Sandpaper is also used sometimes when I want the surface smoother than the wire brushes are capable of making it. I used course and medium sandpaper. Sandpaper comes in handy for small fields, home lots or to give the rounding of a hill the final touch before applying the paint and grass.





## Precision knives



Precision knives are used to add texture to the sides of a cutting to add rock detail. I cut into the side of cutting using the knife, making horizontal and vertical cuts to bring out the rock detail I am trying to model. This is done after the brushes have been applied to give the overall effect.

## Gluing:

There are various types of glues that can be used but for best results I use Liquid Nail. I use the tube that states that it is made for paneling and includes foam board on the side of the tube. There is also the same product that is formulated just for foam board which also works when you are gluing foam board to foam board. But I have used the paneling glue with good results even when gluing foam to foam. I would not use wood glues because the foam board is an insulation material and the glue will take forever to dry.

## Painting:

Stay away from oil based paints because they will react with the foam board. The reaction will cause the foam board to dissolve which means you will be replacing the scenery you attempted to paint.

All acrylic paints are safe to use because they do not react with foam board. They are cheaper too.

If you prefer to use light washes to color your rocks and scenery, you will need to paint your foam board with a white acrylic paint or a mat preparation, which is also just white paint, to cover the pink or blue color of the foam board.

Do not spray paint foam board scenery, it will destroy the foam board. Of course, I do know why you would want to paint scenery with spray paint anyway!

If you use plaster on top of the foam board to model rocks, rivers, etc., then the plaster allows use of oil based products for painting and coloring your scenery because it prevents contact of oil paint and foam board.

Use of plaster might also remove the need to paint the scenery white before washes are applied.



## Adding Trees and Other Scenic Elements



This material is easy to add trees, fences and other scenic elements because it is softer than plaster  
Tree roots do not have to sit on the surface but can be worked into the insulation board for more realistic looking scenery  
Wholes to set your signs, fences, etc. are easily to make, just add a little glue and set your post in the whole  
Scenery does not have to sit on the surface or need a drill to make the wholes you need!  
Do not be afraid to mix up your paint, sand, and other scenic elements and just apply them directly to this board, no need to add plaster first unless you really need it!

## Water Effects and Foam board



You must be careful not to use any of the many water effects produces that are oil based or epoxy based because they will destroy the foam board  
There are a number of acrylic water effects creating products on the market. Realistic Water and Water Effects are both offered for sale by Micro-Mark. There is also the artist product called Liquitex Goss which is a thick liquid or paste artists use to added texture to their art and which we can use to simulate water. This is the same material that Marty Vaughn uses and used as the modeling material for his clinic on constructing water effects.  
Addition of plaster to create rock effects using rock molds and to coat the bed of your lake, river or stream eliminates the restrictions on what type of products you use for creating your water effects because the plaster insulates the foam board from the product you are using for creating your water.

## Conclusion:

Use of foam insulation board can produce light weight and yet durable scenery. Because of how the insulation board is manufactured, there are limits as to what products can be applied directly to the board to add color or water effects. It is my belief that the board is quicker, easier and less messy to apply than cardboard webbing covered with plaster cloth. It is easy to cut shape using hot knives, saws, and various types of knives. It is easy to shape using saws, knives and various sizes of brushes. Also, plaster can be applied over the foam board to give it rock effects along rivers, railroad and highway cutting and on the sides of hills and mountains. When plaster is applied over the foam board, any product can be used for painting or to produce water effects. The foam board is easy to get but is only sold in large 4 by 8 feet sheets which can be inconvenient if you don't have a truck or trailer hitch. But the stores that sell this material also rent trucks and there are rental agencies so it is possible to get this material home without too much pain or expense. I have used it on my home layout and I would like to encourage you to try it if you are building a home layout.



## Turkey Creek Division Meetings and Events for 2011

All meeting for this year will be held at

Johnson Country Northeast Offices

6000 Lamar, Mission, KS

### Calendar of events for 2011

January 15 & 16 World Greatest Hobby on Tour, Omaha, NE

January 22 Mid-Con Region Business Meeting Shawnee Library

January 25 Meeting

February 22 Meeting

March 22 Meeting

April 26 Meeting

May 24 Meeting

May 16-19 Mid-Continent Regional Convention Hosted by the  
Cowboy Line Division in Norfolk, NE

June 21-26 National Large Scale Convention 2011 Overland Park, KS

June 28 Annual Model Contest

July 26 Meeting

August 6 Turkey Creek Division Train Show Lenexa Community Center

August 23 Meeting

September 27 Meeting

October 25 Meeting

November 22 Meeting

December 13 Holiday Party (Second Tuesday)

**WWW.NGRC2011.COM**



**June 21- 26, 2011**

**Come join us for some good ole' midwest hospitality**

\* Over 30 tours in the Kansas City area plus pre and post convention tours all over the midwest including St Louis, Mo.

\* Over 40 Hours of clinics.

\* Fruit and Chocolate Social

\* A Huge Exhibition Hall

\* Module Layouts from all over

\* and of course

**World Famous Kansas City Bar-B-Q**

**Make it a vacation....**

Union Station  
Agricultural Hall of Fame  
Worlds of Fun Theme Park/ Oceans of Fun Theme Park  
Schlitterbahn Vacation Village  
Mahaffie Stage Coach Stop and Farm  
Major League Baseball  
Country Club Plaza  
18th & Vine Historic District  
Historic River City Market  
Historic Westport District  
Great Wolf Lodge  
Hallmark Visitor's Center & Kaleidoscope

Wonderscope Children's Museum  
Arabian Steamboat Museum  
Liberty Memorial  
National World War I Museum  
Harry S Truman Library and Museum  
Nelson-Atkins Museum of Art  
Airline History Museum  
American Jazz Museum  
Harry S Truman Farm Home  
Thomas Hart Benton Home  
Missouri Town 1855  
Kemper Museum of Contemporary Art  
Kansas City Museum

**On-line at**

**WWW.NGRC2011.COM**

**Now taking Registrations**

**By Phone**

**913-648-6566**





**LAYOUT DESIGN AND  
OPERATIONS WEEKEND  
TULSA, OK**

**March 18, 19 & 20**

**Presented by the Indian Nations Division of the NMRA**  
In conjunction with the LDSIG and OPSIG

**Location:**

**Shriners Temple  
2808 South Sheridan Rd.  
Tulsa, Oklahoma 74129**

---

**Workshop Presentations**

**Saturday March 19<sup>th</sup> from 8:00am-5:00pm**

- Tony Koester – 2 presentations
- Doug Gurin – 2 presentations
- Riley Triggs – 1 presentation
- Keith Robertson – 1 presentation
- Check web page for more information on presenters....

- ✓ Layout Design Challenge – See web page for additional details
- ✓ Bring your trackplans, photos, display boards and mockups to share with everyone, great place to solicit feedback on your layout!
- ✓ Panel discussion
- ✓ 3 Operating sessions with several layouts available for each session

---

**Local layout operating sessions:**

**Friday March 18<sup>th</sup> from 6pm-9pm**

**Saturday March 19<sup>th</sup>, 7pm-10pm**

**Sunday morning March 20<sup>th</sup> from 10am to 1pm**

(Register early to secure spots as an operator on the layouts.)

---

Visit our web page to register using Pay Pal and for updated information;

<http://ldopsigmeet.tulsanmra.org/>

***We look forward to seeing you in Tulsa!***





# Layout Design and Operations Weekend 2011

March 18, 19 & 20

For registration questions email: [ldopregistration@tulsanmra.org](mailto:ldopregistration@tulsanmra.org)

For Layout Design Challenge questions email: [ldopchallenge@tulsanmra.org](mailto:ldopchallenge@tulsanmra.org)

All other questions email: [ldopchairman@tulsanmra.org](mailto:ldopchairman@tulsanmra.org)

---

## REGISTRATION FORM:

**Please mail to:**

Carl Schorfheide

LDOP Weekend

7245 S. 92<sup>nd</sup> Ave, Apt. #8

Tulsa, OK 74133

(Cash or check accepted; make checks payable to: Eastern Oklahoma Division)

Name: \_\_\_\_\_

Address: \_\_\_\_\_

\_\_\_\_\_

Phone Number: \_\_\_\_\_

Email Address: \_\_\_\_\_

☐ EARLY BIRD REGISTRATION BEFORE January 1<sup>st</sup>, 2011 is \$20.00  
AFTER January 1<sup>st</sup>, 2011 REGISTRATION is \$25.00

☐ Lunch - make your own Sandwich Bar \$8.00

☐ Polo Shirt \$25.00 write in size \_\_\_\_\_ (2XL and larger add \$2.00)

☐ Yes, I would like to operate on the local layouts

☐ I am just attending the Workshop Presentations will not be operating

I am a member of the following: (this is just a survey for our own information; your info will not be distributed)

☐

NMRA

☐

LDSIG

☐

OPSIG

**Register early to secure spots as an operator on the layouts!**

---

(For Internal use below the line)

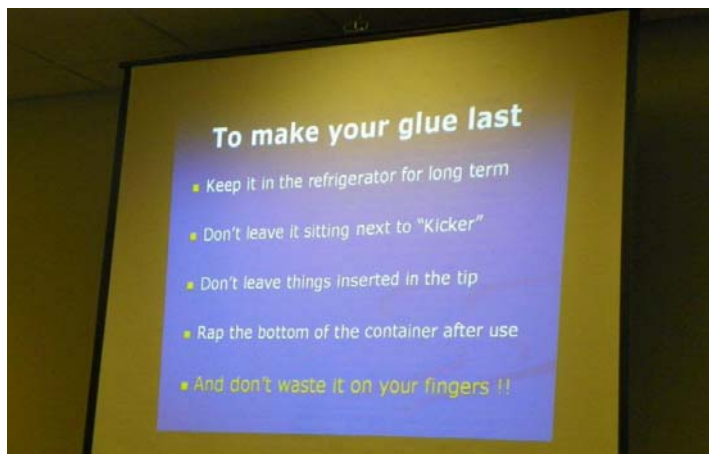
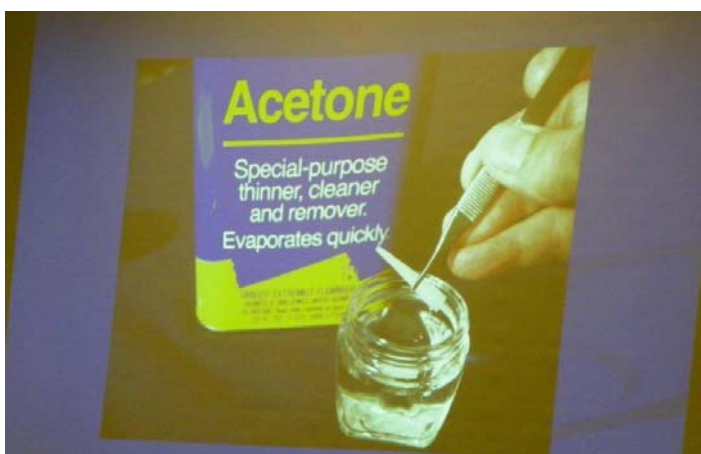
Date Received:

Registration #:

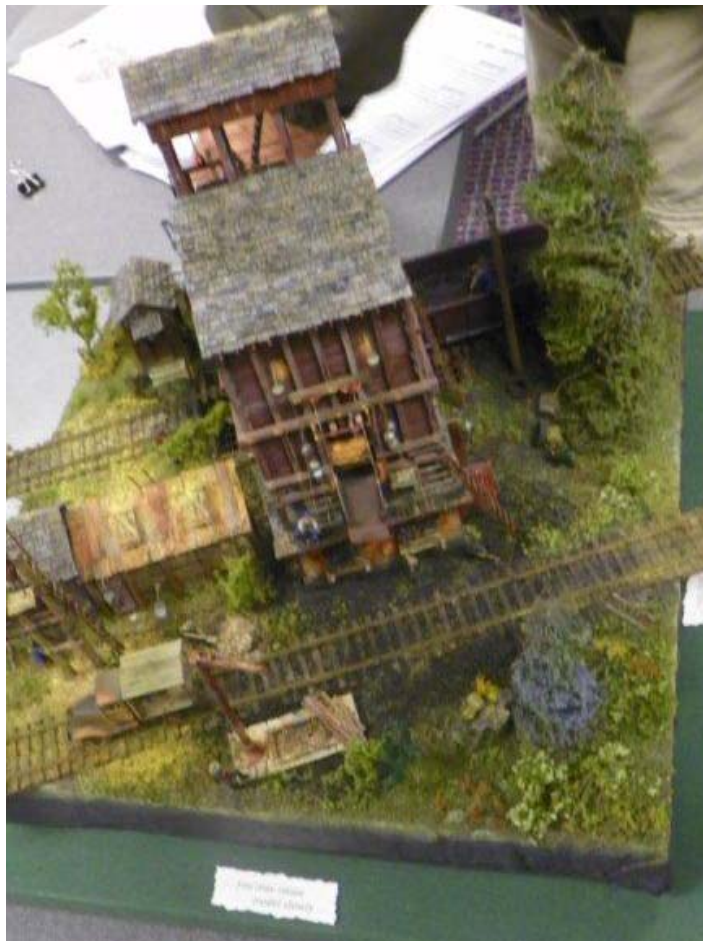




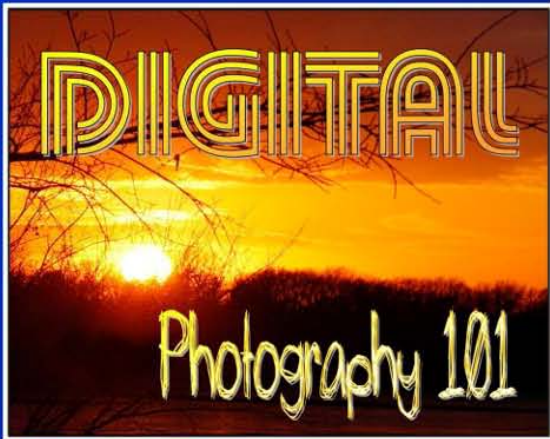












**SPECIAL INTEREST GROUP:**  
Would you like to learn more about digital photography? Join Crossroads' Digital Photography class and meet others with the same interest.



Ron Morse, a seasoned and published photographer, will give you pointers on understanding your digital camera and taking photos.

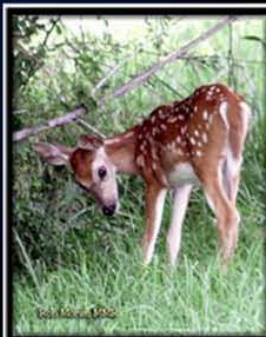
This class will be offered on four consecutive  
**Monday evenings from 7:00-9:00 p.m.**

Class dates are:  
**March 28, April 4, April 11, and April 18, 2011.**

The class is **FREE** but you must **PREREGISTER.**

For more information, and/or an electronic brochure please contact  
Ron Morse, MMR at

913-894-6472  
[ronmorsemmr@gmail.com](mailto:ronmorsemmr@gmail.com)



**TURKEY CREEK DIVISION**  
**4954 Marsh Avenue**  
**Kansas City, MO 64129-2111**



**FIRST CLASS MAIL**  
**ADDRESS SERVICE REQUESTED 4955**

[mcor-nmra.org/divisions/turkeycreek/](http://mcor-nmra.org/divisions/turkeycreek/)

## **TURKEY CREEK DIVISION MEETING**

### **Meeting and Show Dates for Turkey Creek Division 2010**

#### **Meeting December 14**

January 15 & 16 World Greatest Hobby on Tour, Omaha, NE  
January 22 Mid-Con Region Business Meeting Shawnee Library  
January 25 Meeting  
February 22 Meeting  
March 22 Meeting  
April 26 Meeting  
May 24 Meeting  
June 21-26 National Large Scale Convention 2011 Overland Park, KS  
June 28 Meeting Annual Model Contest  
July 26 Meeting  
August 7 Turkey Creek Division Train Show  
August 23 Meeting  
September 27 Meeting  
October 25 Meeting  
November 22 Meeting  
December 13 Annual Holiday Party (Second Tuesday)

