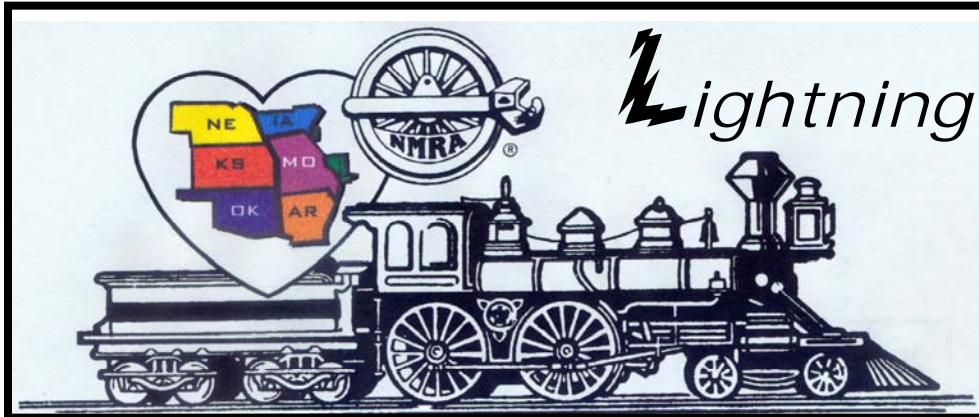


Turkey Creek Division



Lightning Slinger

VOL 24 NO. 2

"For all gauges and all ages"

February 2010

MONTHLY PUBLICATION OF THE TURKEY CREEK DIVISION
OF THE MID-CONTINENT REGION, NMRA

Clinic for February Turkey Creek Meeting

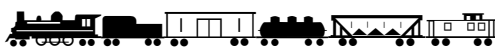
BACKGROUNDS: THE DOUBLE BACKDROP by Dr. Dave Jacobs

BACKGROUNDS FOR THE ARTISTICALLY SHORT-CHANGED...with a
brief literature review

"Painting and Hanging a Mountain Backdrop" by Bob McBean

This PowerPoint presentation will suggest some ways a backdrop can be hung like a picture to avoid defacing the wall in a room, how the backdrop can be constructed, and some painting techniques to provide a suitable mountain backdrop.

Where is spring



From THE SUPER'S DESK....

February 2010 Newsletter Turkey Creek Division

Vance Reed's clinic on "Building Glory" provided not only an outstanding description of building a level of detail not usually found in N-scale but provided an excellent description of his layouts history. Pat Harriman is an advocate that every layout should have a history or story behind it. And all are familiar to Ron Morse's story of the Colorado heritage that is included in his layout. But those thoughts only nudge me to put into writing the story of my San Juan & Tellurton RR. Mostly my comments have been about how my railroad is founded on a legacy. But I must develop the story of why the railroad was built and how those reasons led to the design. It may include the need for a passing track at a specific location or a service spur for an industry that the railroad was to serve.

The clinic "Operation Lifesaver" by Howard Gillespie was informative and a reinforcement that railroad safety is a major concern. For the SJ&T RR I do not need to have elaborate safety features as even today on the Cumbers and Toltec such features are minimal. However Howard's comments create thoughts of incorporating Operation Lifesaver features, such as warning signs, cross-arms, gates and the swinging light signal that a train was approaching the roadway. The fences and signs for people would add interesting detail.

There are interesting clinics this month - - both relate to backdrops however I believe that they show different approaches and alternative ways to achieve a layout enhancing feature. Dave Jacobs and Bob McBean will do these clinics. And while on the subject of clinics I need your help. Many of you have done something different, special, unusual, and/or even something that you feel great pride in having achieved. Your clinic participation also helps you in acquiring the Author Achievement Award. I'll be soliciting your participation in Turkey Creek's clinics. We need you to share your knowledge and talents of model railroading. A recent modeling internet items that I had called to my attention are Michael Smith's car dioramas at <http://www.flickr.com/photos/24796741@N05/sets/72157604247242338/show/with/2346008881/> The last photo in that group Michael annotates the parts he used to construct the diner interior. Great inventiveness.

Sign up and start working on this year's Modeling Challenge. Remember that the specification is open – the entry has only has to fit through the meeting room door. Ron Morse has again accepted the HAMMER task. Oh yes, I too will have to get going on an entry for Model Challenge 2010. This is the second month of having the privilege and responsibility of being Superintendent and it has gone well with the help of ever faithful clerk Louis. I avidly look forward the coming months.

Shelly

Superintendent 

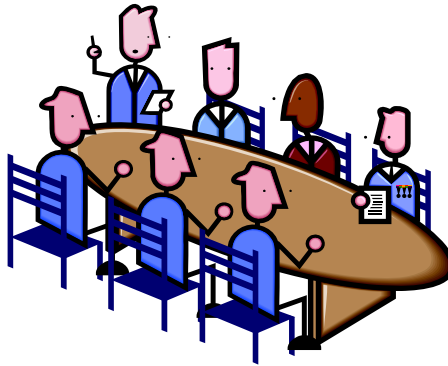


Turkey Creek Division

Minutes from the January 24 2010 Meeting

Sheldon Levy our new Superintend brought the meeting to order at 7pm. He introduced himself and gave a brief history of his history in Model Railroad.

Sheldon then asked if there were any awards to be given out. Marty Vaughn MMR said that he had some. He asked Brad Morneau to come and receive his to Master Builder Structures, then asked Jack Ferris to come forward to receive Model Railroad Author and Association Volunteer and then after a couple of reports Ken Jenkins receive his Gold Spike Award.



Louis gave a short talk on up and coming events that Turkey Creek will have displays at. They are the Lawrence Train Show February 20, the Great Train Expo at the American Royal February 27 & 28, Cedar Creek Branch of Olathe Library March 27 & 28, and also there is a display at the Great Plains Mall at the A the Great Plains Train Station they are open Thursday, and Friday nights and all day on Saturdays and Sundays.

Louis asked Robert Jefferis to talk about the 25 Anniversary Train Show Robert said that he had 45 tables sold for the show. Since then he has told me that we now have 85 tables paid for. We are still look for help to fill the positions of Layouts, and PR chairman's. We need help the day of the show with registration, door prizes, contest room, and clinics. Please let Louis know if you can help.

Next was the clinic's the first was by Howard Gillespie, Regional Manager, for Grade Crossing Safety & Trespass Prevention for the Federal Railroad Administration his clinic was on Operation Lifesaver. He gave a great talk that covered a lot of information on what Operation Lifesaver was about then he talked about what he does with the FRA and his layout that he is building at home. He also was very worried about his dog who he had taken to the vet. In an email that he has sent me he has this to say - Also, my dog made it - the vets said she was the worst case she had ever seen and was 99% dead.

We took a short break during that time Kerry Lindenbaum handed out the motors that members could use for this year's Model Challenge. There are still motors left and they will be at the meeting next week.

The next clinic was by Dr Vance Reed on Building Glory a Scale model of a fishing fleet in the area in the 40's and 50's. His layout is in N Sale the Foggy Harbor & Eastport Railroad. Pictures for his boats that he has built are in this issue of the Lightning Slinger. This was a great clinic and a fantastic layout pictures.

Both of the clinics will be given again at the Turkey Creek Division Show in August. **Don't miss them.**

Next Meeting on February 23 at 7pm
Clinics will be on Backdrops.
Louis Seibel Clerk

OFFICERS

Superintendent

Sheldon Levy
913-438-7065
shellylevy@everestkc.net

Paymaster

Jack Boren
HP: 913-962-2408
jbcmd1@me.com

Clerk

Louis O Seibel
HP: 913-393-3495
C: 913-927-6850
L-seibel@comcast.com

Division Director

Brad Morneau
HP: 913-897-0669
bmorneau@kc.rr.com

Train Show Chairman 2009

Louis O Seibel
HP: 913-393-3495
C: 913-927-6850
L-seibel@comcast.com

Membership Chair

L S Editor

Ted Tschirhart
HP: 816-861-3449
tedtschi@kc.rr.com

AP Merit Awards & Achievement

Joe B. Robertson, MMR
HP: 816-331-2773
piperva@aol.com

Past Superintendent

Larry Diehl
HP: 913-441-1605
ldiehl@aci-boland.com

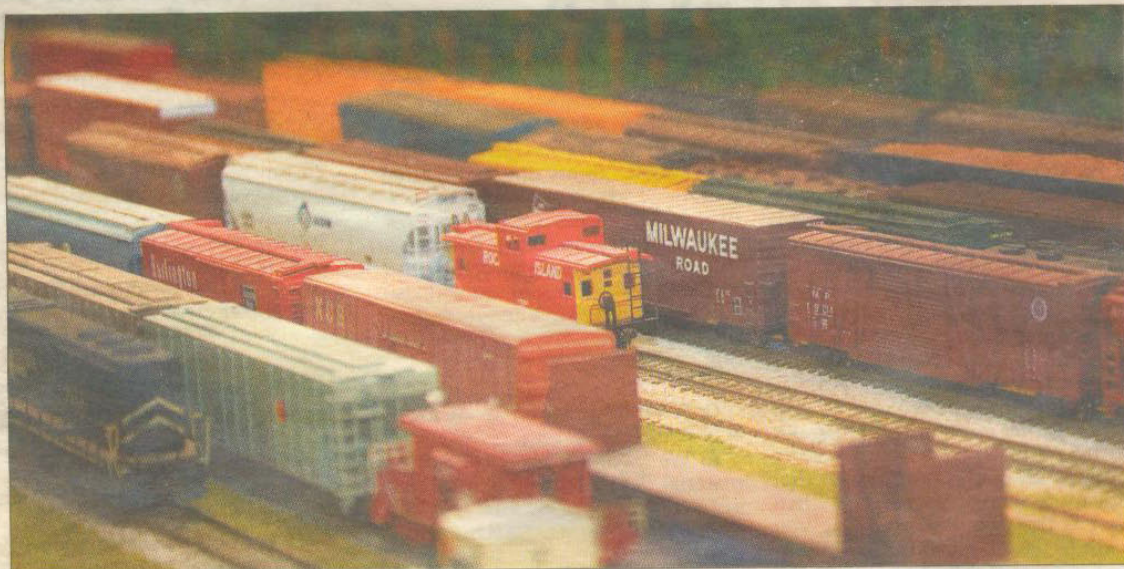
Web Master

Paul Myers, MMR
HP: 816-734-3719
paulwmyers@kc.rr.com

Web

<http://www.tc-nmra.org>
Turkey Creek Division
IS A 501(C) (3)
ORGANIZATION





SHAWN LINENBERGER/STAFF

Several model railroad cars, as well as cabooses and an engine are lined up in a "Kansas City" rail yard in Tom Stolte's railroad display near Jarbalo. Various stops from Kansas City to Omaha, Neb., are replicated in his railroad building. Stolte, who has been collecting trains since 1974, plans to have open houses in May.

WORKIN' ON (MINI) RAILROAD

Model train enthusiast
has collected since 1974

BY SHAWN LINENBERGER

SLINENBERGER@THEWORLD.CO.INFO

With a visit to Tom Stolte's property near Jarbalo, one can travel from Kansas City to Omaha, Neb., in a matter of moments.

A building measuring 20 feet by 40 feet is home to Stolte's hobby: model trains. More than 1,500 feet of track connects various communities in the display. Kansas City, Atchison, Leavenworth, Lincoln, Neb., and Omaha, Neb., are a few of the communities represented in the display that runs along the walls at two levels: about 4-5 feet from the floor and another level at 7 feet. Track also meanders throughout the building at the lower level as well.

"I told Mom one year, 'I'll get you a crockpot if you get me a train set,'" Stolte said. "I've been into it ever since."

Stolte started collecting model trains in 1974. His love for trains grew from trips in which he tagged along with his father taking livestock to the stockyards in Kansas City, Mo.

"We'd always drive by the Santa Fe yard," Stolte said.

These days, the only way to go is MoPac, or Missouri Pacific, in Stolte's opinion, as various MoPac signage can be found throughout the display. The building was finished in November 2008 and continued work on the display has taken place since then.

Stolte previously had worked for a few printing companies in the area. When he was laid off at his last printing company job in 1992, he went to work full-time making miniature railroad decals and has been in that profession ever since. His business is called Oddball Decals, oddballd decals.org.

In the model train building, replica grain elevators and other structures dot the display at each stop. For instance, Don Bronec of McLouth, who works for Stolte helping create the display, built a replica of the Blair Feeds building in Atchison. The structure placed first at the Turkey Creek Meet, a National Model Railroad Association contest, in Lenexa in 2009.

Paul Knowles of St. Joseph, Mo., and Kirk Freeman,

"I told Mom one year, 'I'll get you a crockpot if you get me a train set.' I've been into it ever since."

Tom Stolte
Model train enthusiast



SHAWN LINENBERGER/STAFF

Tom Stolte sits near miniature versions of select buildings in Atchison in his model train display building.

NUMBER CRUNCH

20x40: The dimensions, in feet, of Tom Stolte's railroad display building near Jarbalo.

1974: It was more than 35 years ago when Stolte started collecting model trains.

1,000: The number of miniature ears of corn Kirk Freeman created as part of a cornfield.

SEE **LONGTIME**, PAGE 10

FOR TODAY'S FAMILIES IN TONGANOXIE, SUBURBAN LEAVENWORTH COUNTY AND THE 2



Longtime model train collector creates job out of hobby by selling railroad decals

FROM PAGE 1

McLouth, also work for Stolte assembling the exhibit.

As Knowles noted, creating the replica buildings takes time. He estimated work on a building for a stop in Willis, Kan., which is near Hiawatha, required a total of three or four months to finish. Another small town, Weeping Water, Neb., is a stop on the way to Lincoln and Omaha.

In the "Leavenworth" area of the display is a replica of a Geiger Ready-Mix building and the former Bay State Mill. The actual mill no longer is standing in Leavenworth.

For a replica of the Stolte family's original homestead, which Stolte built tiny board by tiny board, Freeman created a cornfield — with about 1,000 miniature ears of corn. In addition, Freeman painted a backdrop complete with about 1,200 trees.

"I counted all those trees and I mind-numbingly did that," Freeman said.

Bronec dubbed Freeman as the group's "ar-teest" for all his artistic backdrops.

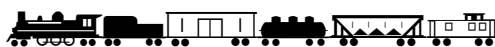
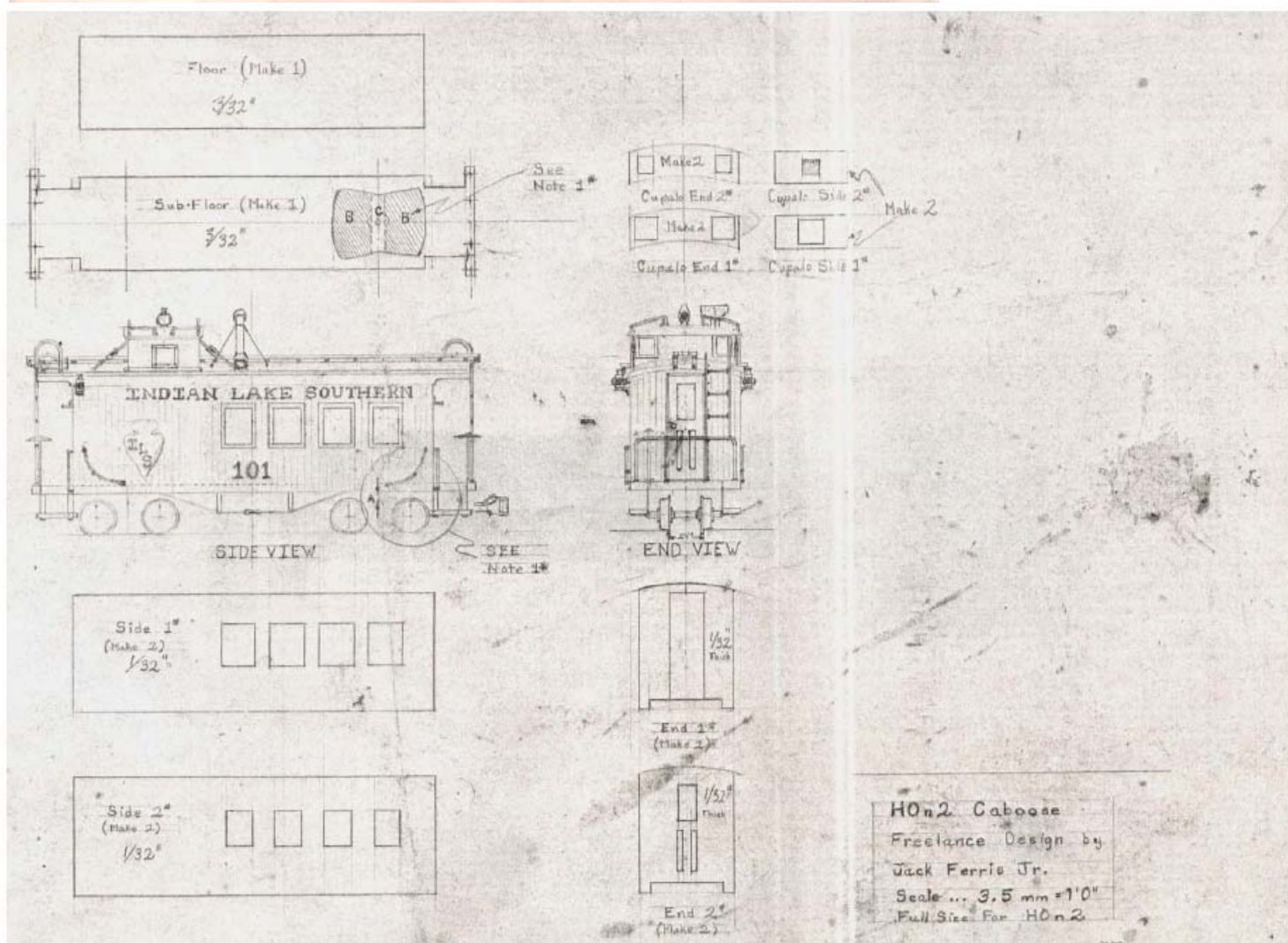
"I don't know about that," Freeman said with a groan.

Work continues on the display, but Stolte already has welcomed visitors. A group of about 10 from the MoPac Historical Society visited the exhibit. Stolte had planned to have open houses on Sundays in January, but the winter weather has caused a cancellation of those plans. He now is planning for Sunday afternoon showings in May.

"It's definitely great to see this all come together," Knowles said.

Bronec agreed, noting it's rewarding to take plastic and other materials and see it transform into an array of replica structures.

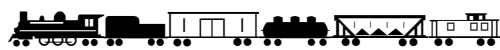
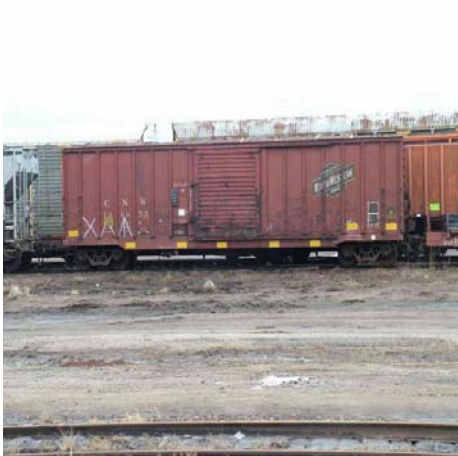
"Of all the jobs I've had in my life, it's the best one I've ever had," Freeman said.





Photos by
Tom Stolte





[Quote]

Union Pacific to give historic railroad bridge to Mo. city for potential use on Katy Trail

DAVID A. LIEB Associated Press Writer

February 4, 2010 | 4:24 p.m.

BOONVILLE, Mo. (AP) — A rusty Missouri River railroad bridge that came to symbolize the battle between historical tourism and modern transportation has been saved from demolition due largely to federal stimulus funds.

Gov. Jay Nixon announced Thursday that Union Pacific Corp. has agreed to give the old bridge to the central Missouri city of Boonville, which hopes to convert it for use by hikers and bikers on the Katy Trail State Park.

The 78-year-old bridge, which hasn't carried a train in a couple of decades, had been targeted to be torn by Union Pacific so that its steel could be used to build a much-needed, second railroad crossing over the Osage River east of Jefferson City.

But last week, the federal government awarded Missouri \$31 million in railroad stimulus funds, three-fourths of which will be used to help build a new Osage River Bridge. That alleviated the need for the steel from the old Katy bridge, said railroad spokesman Ben Jones.

Public and private funds still are needed to renovate the old bridge. But Nixon said he is confident it will eventually become part of the Katy Trail, a 225-mile path that follows the old route of the Missouri-Kansas-Texas Railroad Co., commonly known as the Katy Railroad.

The Katy Trail is promoted by Missouri as the longest developed rail-to-trail project in the nation. It currently diverts from its rail-bed route to a nearby highway bridge to cross the Missouri River at Boonville. But the historic lift-span bridge has long been coveted for the trail. Supporters fought for more than five years in the courts, federal regulatory agencies and behind-the-scenes negotiations to try to preserve it.

"We have saved the bridge, opened up economic and recreational opportunities for central Missouri and the world," Nixon said at a news conference with the bridge in the background. And because of the federal grant for new Osage River Bridge, "we've also increased the ability to move goods across the state of Missouri and put us in a better situation to have high-speed rail."

The Osage River Bridge will cost \$28 million, with \$5.6 million coming from Union Pacific and the rest from federal grant,

Jones said. The Union Pacific lines also are used by Amtrak, meaning trains often must stop and take turns crossing the single available bridge.

Because the old Katy Railroad Bridge near Boonville was no longer used for transportation, the U.S. Coast Guard had deemed it a navigational hazard that must be removed from the Missouri River. Union Pacific, which bought the MKT Railroad in 1988, had lined up a contractor to dismantle it when then-Attorney General Jay Nixon sued in 2005 to halt the project.

Nixon, who became governor in January 2009, lost in a case that went to the Missouri Supreme Court. But the legal fight delayed the bridge's dismantling, and regulatory procedures delayed it further.

Boonville Mayor Dave Nicholas said it will cost between \$2 million and \$4 million to convert the bridge for use on the Katy Trail. The city has \$500,000 for the bridge in its budget that takes effect in April, he said. The nonprofit Save the Katy Bridge Coalition has pledges of \$360,000, said chairwoman Paula Shannon, who believes fundraising will pick up now that the project has become a reality.

J&L Hobby & Trains

New Store

Odessa Outlet Mall Opposite side of Eastern
Jackson County Mainliners big Layout
Mile Marker 37A

Store hours:

Monday, Tuesday, Wednesday, and Friday 10
am - 6 pm

Saturday 10 am - 4 pm

Closed Thursdays and Sundays.

Contact Information

Telephone

(816) 633-5400

Postal address

1344 W Old Highway 40

Suite F20

Odessa, MO 64076-9601

EBay Store link:

<http://stores.ebay.com/Train-Store-MO>

Seller ID jltrainman

Electronic mail

General and Sales Information:

jltrain@attglobal.net

Weekly newsletter: jltrain@attglobal.net

Web Site: <http://pws.prserve.net/jltrain>



Common CVs

CV 1: Short address
CV 2: Vstart
CV 3: Acceleration
CV 4: Deceleration
CV 5: Vhigh
CV 6: Vmid

CV 7: Mfg version
CV 8: Mfg ID (list below)

CV 9: Total PVM
CV10: BEMF Cutout
CV11: Packet timeout
CV13: Alternate mode F1-F8
CV14: Alternate mode F9-F12, FL

CV15-16: Decoder lock
CV17-18: Long address

CV19: Consist address
CV21: Consist active F1-F8
CV22: Consist active F9-12, FL
CV23: Acceleration adjust
CV24: Deceleration adjust

CV29: Decoder configuration

CV30: Error indicator

CV65: Kick start
CV66: Forward trim
CV67-94: Speed table
CV95: Reverse trim

CV105-106: User ID

Manufacturer IDs (CV 8)

1: CML Electronics Limited
2: Train Technology
11: NCE Corporation
12: Wangrow
13: Public Domain & Do-It-Yourself Decoders
14: PSI - Dynatrol
15: Ramfixx Technologies (Wangrow)
17: Advanced IC Engineering, Inc.
18: JMRI
19: AMW
20: T4T - Technology for Trains GmbH
21: Kreischer Datentechnik
22: KAM Industries
23: S Helper Service
24: MoBaTron.de
25: Team Digital, LLC
26: MBTronik - PIN GfTmBH
27: MTH Electric Trains, Inc.
28: Heljan A/S
29: Mistral Train Models
30: Digsight
31: Brelec
32: Regal Way Co. Ltd

DCC Shortcuts Card

PRINT OUT AND KEEP
NEAR DCC SYSTEM

Model Railroad Hobbyist magazine - Issue 4 bonus

Resetting decoder to factory settings (use programming track):

- Set CV 8 to 8: Digitrax, ESU, SoundTraxx Tsunami
- Set CV 8 to 33: Lenz
- Set CV 30 to 2: NCE, SoundTraxx DSD, TCS

Then remove loco from track and put back on track (or power cycle the layout).

LOCO DOESN'T MOVE?

- Put loco on programming track
- Set CV19 to zero and try again
- Still doesn't move? Then ...
- Set CV29 to 2 and set CV1 to value 1-99
- Assign throttle to value in CV1
- Still doesn't move? Then ...
- Try resetting decoder to factory settings
- Still doesn't move? Then ...
- Time to send the decoder in for repair

Accessory decoder (**OFF**=mobile on=accessory)

Reserved (not used)

Addressing digits (off=2-digit **ON**=4-digit)

Speed table (**OFF**=none on=use speed table)

DC sensing (**OFF**=none on=run on DC)

Speed steps (off=14 **ON**=28/128)

Reverse direction (**OFF**=normal on=reverse)

GETTING OPTIMUM SLOW SPEED PERFORMANCE

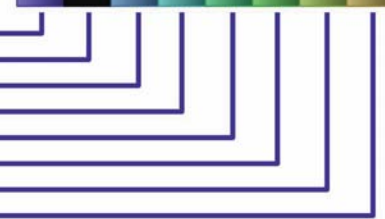
- Lubricate and break in your loco. Do the following while the loco is still warm:
- Make sure speed step table in CV67-94 is linear with step 1 = 0 (CV67) and step 28 = 255 (CV94).
 - Put the decoder in 28/128 mode and speed table on (50 in CV29). Set CV3, CV4, CV65 all to zero.
 - Run the loco, then determine the slowest speed step at which it will keep running.
 - Put the speed step value in Vstart (CV2).
 - Set the decoder to speed table off (34 in CV29).
 - Turn the throttle to speed step 1.
 - Play with kick start to get the loco to move consistently at speed step 1. Tweak CV2 up if needed.
 - Set CV 5 to desired top speed (128-255 common)
 - Set CV 6 to desired mid-speed (40-64 common)
 - Now adjust acceleration, deceleration, torque compensation, dithering, or BEMF as desired.

CV Bit Mapping

Bit 7	Bit 6	Bit 5	Bit 4	Bit 3	Bit 2	Bit 1	Bit 0
128	64	32	16	8	4	2	1

CV 29

Bit 7	Bit 6	Bit 5	Bit 4	Bit 3	Bit 2	Bit 1	Bit 0



MRH DCC SPONSORING ADVERTISER URLS (alphabetical):

Accu-Lites acculites.com
DCC Installed dccinstalled.com
Digitrax digitrax.com
Litchfield Station litchfieldstation.com
Tonys Trains tonystains.com
Traintek traintek.com

132: ZTC Controls Ltd.
133: Intelligent Command Control
135: CVP Products
139: RealRail Effects
141: Throttle-Up (Soundtraxx)
143: Model Rectifier Corp.
145: Zimo Elektronik
147: Umelec Ing. Buero
149: Rock Junction Controls
151: Electronic Solutions Ulm GmbH & Co KG
153: Train Control Systems
155: Gebr. Fleischmann GmbH & Co.
157: Kuehn Ing.
159: LGB (Ernst Paul Lehmann Patentwerk)
161: Modelleisenbahn GmbH (formerly Roco)
163: WP Railshops
165: Model Electronic Railway Group
170: AuroTrains
173: Arnold - Rivarossi
186: br/AWA Modellspielwaren GmbH & Co.
204: Con-Com GmbH
225: Elpoma Electronics Poland
238: NMRA reserved

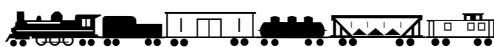
Before the bridge can be crossed, workers will have to rebuild one span that had been removed. Shannon said the goal is to first get the sections closest to the shores open for pedestrians, then tackle the middle section, which can be raised and lowered to allow barges and boats to pass underneath. The Missouri River typically is used by shippers only in the warmer months, when water levels are higher.

One option is to install an elevator system that would carry people from the lowered sections of the bridge to the raised section and then back down, said Chad Sayre, of the Columbia-based engineering firm Allstate Consultants, which has been working on the project.

Alas those of you that were not at the banquet a few weeks ago missed out on a GREAT dinner. Chuck did a great job as "banquet manager", and from all indications Warren is more than delighted to be done with that chore. We passed out the Club T Shirts to those present; I will have them with me at the next meeting for those that did not get theirs. Everyone was happy with the way that they turned out.....why not.....they were free !!

The Train Show at the American Royal was a great success; the attendance on Saturday was huge, Sunday's was excellent too, but not as large as on the previous day. As usual our two modules had good crowds at all times, and my thanks to Phil and Chuck for their help.....we could have used some additional bodies. The Club was paid \$95.00 for the event and we use this to pay for members parking. The Worlds Greatest Hobby show at Bartle Hall in March promises to be a good one.....My buddy Ed out in California went to the one a few weeks ago in Sacramento and said it was excellent. A great many of the manufacturers were their, however there were no bargain prices. It would be great if we could have a good turnout of Club members to help out on Saturday and Sunday. More about this at the February 4th meeting. I almost forgot.....we may have picked up some new members.....three to be exact. Well thats about it from beautiful downtown Garnett..... Happy rails to all.....

Steve



Gary,

Louis Seibel suggested that I contact you and see if you can help us get the word out about our Open Houses in 2010.

I am the president of the club and currently a member of NMRA and have been for a few years now.

The Central AR Model RR Club(CAMRC) started in 1998 and we have been growing ever since. Last year 2009, a few of our members suggested that we set-up regularly scheduled Open House at our local Community center to expose folks to the Worlds Greatest Hobby. We started with a very small attendance and at our last show of 2009, we had over a 1,000 guests for a 1-day show.

Since then, I have met a # of closet Model Railroaders and found out that a # of them are NMRA members, and did not know about the show or even that a club exists in central AR

We are trying to highly publicize these 7 Open House, and organize some of these closet modelers, who either are currently NMRA members or who we might get interested in joining a Local club and/or the NMRA.

I have attached a flyer for our first event of 2010 and was hoping that you could help. We do not have a budget right now to pay for advertising so any help you can give us would be greatly appreciated. Also, we do not charge an admission but contribution are gladly accepted. The facility that we have access to, has a separate room that we could use for seminars or Model contest.

Below is our schedule for our Open House for 2010 confirmed:

These will follow our established pattern but will be regularly set for the THIRD SATURDAY of these months:

- March 20, 2010
- April 17, 2010
- May 15, 2010
- July 17, 2010
- August 21, 2010
- September 18, 2010
- October 16, 2010.

The doors will open to the public for this Open House on Saturday mornings from 9 a.m. to 3

p.m. Mike Mottler

creates a new release that we send out to the Local Faulkner County and Pulaski County publications. He also creates a flyer that we post at our 3 local Colleges, Libraries and other facilities around the County.

I would love to set-up some sort of table or booth to advertise the NMRA, but holding down a full time job(50-60 hours a week) and trying to organize these events is gobbling up my free time.

Sending an email as well to, to see if they could help get the word out

- Paul Richardson - President - Mid Continent Region
 - Richard E. Napper
 - Larry Kelso - Region 29 Director
 - Steve Marquess
- We have no Division/Area director for 13 - Little Rock

to see if they can help me

- getting something set-up to publicize the NMRA, it would be great if I could get one of them to attend
- to see if they could help get the word out

We also created a website for all Arkansas train clubs, www.artrains.org as a platform for any Model RR club that would like to get their information out as well as a calendar of upcoming RR events. So if you could help in any way to gather area events information that would be great.

I know this is a lot of information in one email but am trying to keep the excitement/interest in the Worlds Greatest Hobby going and foster an increase in the NMRA membership rolls in the AR area.

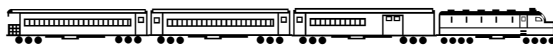
Thanks

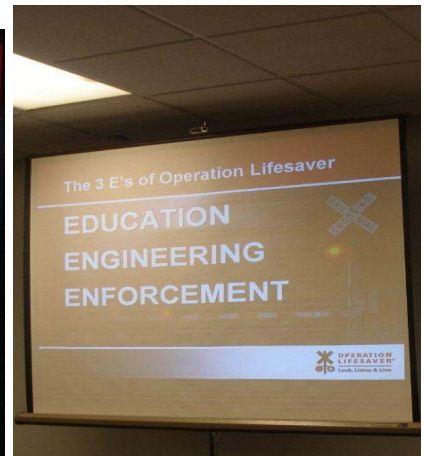
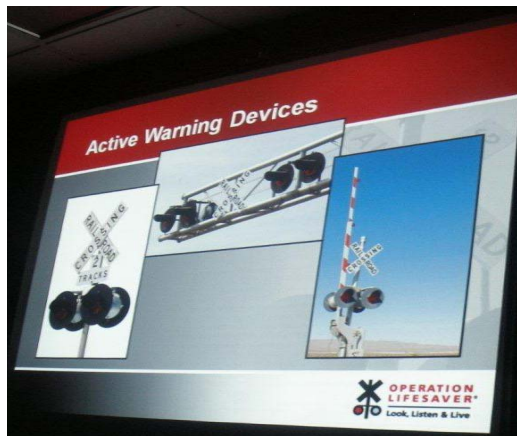
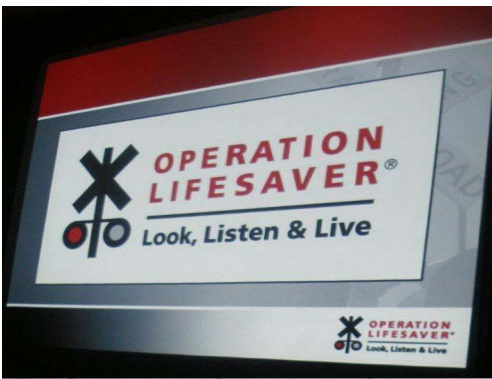
Daniel Gladstone

Email: ca_mrc@yahoo.com

Web Site: www.artrains.org

Phone: 501-269-3030





Marty Vaughn MMR Pressing to
Ken Jenkins



Marty Vaughn MMR Pressing to
Jack Ferris



Marty Vaughn MMR Pressing to
Brad Morneau



Union Pacific to give historic railroad bridge to Mo. city for potential use on Katy Trail

DAVID A. LIEB Associated Press Writer

February 4, 2010 4:24 p.m.



E-mail



Print

Share

BOONVILLE, Mo. (AP) — A rusty Missouri River railroad bridge that came to symbolize the battle between historical tourism and modern transportation has been saved from demolition due largely to federal stimulus funds.

Gov. Jay Nixon announced Thursday that Union Pacific Corp. has agreed to give the old bridge to the central Missouri city of Boonville, which hopes to convert it for use by hikers and bikers on the Katy Trail State Park.

The 78-year-old bridge, which hasn't carried a train in a couple of decades, had been targeted to be torn by Union Pacific so that its steel could be used to build a much-needed, second railroad crossing over the Osage River east of Jefferson City.

But last week, the federal government awarded Missouri \$31 million in railroad stimulus funds, three-fourths of which will be used to help build a new Osage River bridge. That alleviated the need for the steel from the old Katy bridge, said railroad spokesman Ben Jones.

Public and private funds still are needed to renovate the old bridge. But Nixon said he is confident it will eventually become part of the Katy Trail, a 225-mile path that follows the old route of the Missouri-Kansas-Texas Railroad Co., commonly known as the Katy Railroad.

The Katy Trail is promoted by Missouri as the longest developed rail-to-trail project in the nation. It currently diverts from its rail-bed route to a nearby highway bridge to cross the Missouri River at Boonville. But the historic lift-span bridge has long been coveted for the trail. Supporters fought for more than five years in the courts, federal regulatory agencies and behind-the-scenes negotiations to try to preserve it.

"We have saved the bridge, opened up economic and recreational opportunities for central Missouri and the world," Nixon said at a news conference with the

bridge in the background. And because of the federal grant for new Osage River bridge, "we've also increased the ability to move goods across the state of Missouri and put us in a better situation to have high-speed rail."

The Osage River bridge will cost \$28 million, with \$5.6 million coming from Union Pacific and the rest from federal grant, Jones said. The Union Pacific lines also are used by Amtrak, meaning trains often must stop and take turns crossing the single available bridge.

Because the old Katy Railroad bridge near Boonville was no longer used for transportation, the U.S. Coast Guard had deemed it a navigational hazard that must be removed from the Missouri River. Union Pacific, which bought the MKT Railroad in 1988, had lined up a contractor to dismantle it when then-Attorney General Jay Nixon sued in 2005 to halt the project.

Nixon, who became governor in January 2009, lost in a case that went to the Missouri Supreme Court. But the legal fight delayed the bridge's dismantling, and regulatory procedures delayed it further.

Boonville Mayor Dave Nicholas said it will cost between \$2 million and \$4 million to convert the bridge for use on the Katy Trail. The city has \$500,000 for the bridge in its budget that takes effect in April, he said. The nonprofit Save the Katy Bridge Coalition has pledges of \$360,000, said chairwoman Paula Shannon, who believes fundraising will pick up now that the project has become a reality.

Before the bridge can be crossed, workers will have to rebuild one span that had been removed. Shannon said the goal is to first get the sections closest to the shores open for pedestrians, then tackle the middle section, which can be raised and lowered to allow barges and boats to pass underneath. The Missouri River typically is used by shippers only in the warmer months, when water levels are higher.

One option is to install an elevator system that would carry people from the lowered sections of the bridge to the raised section and then back down, said Chad Sayre, of the Columbia-based engineering firm Allstate Consultants, which has been working on the project.



From: Ron Morse [mailto:ronmorsemmr@gmail.com]
Sent: Thursday, February 11, 2010 11:14 PM
To: Louis Seibel
Subject: 2010 Turkey Creek Division Modeling Challenge

Da "Hammer" report..

2010 Turkey Creek Division Modeling Challenge by Rusty Rails

Here we go again! For the 7th Annual TCD Modeling Challenge, the theme continues, as it was the last two years, to be opened up to the max! Again this year, you may build and enter anything, yes....that's anything. The only requirement is that it must fit through the meeting room door! This is the theme voted on by the members attending the modeling challenge meeting last summer. We had some great entries then, with a range of small models to huge layout modules (barely fit through the door). As an added wrinkle, this year we will have an added

category for Best Animation...small motors were made available at the January TC meeting.

So, what exactly does this mean for each of you? What it means is that you will not have any excuse whatsoever for not participating in the event. Let me emphasize here that the Modeling Challenge program was conceived to encourage everyone to participate in the enjoyment of building and displaying railroad models!! Please don't feel overwhelmed, intimidated, or that you don't have time to join in. It is hoped that by participating you will feel a sense of "inclusion", that of being "one of the group."

You may ask yourself, what sort of model could I enter? First, let me make this clarification....entries need not be constructed especially for this event. If you have something that you built in the past, please consider entering it. Or, if there is a new project that you have been thinking about starting, now is a good time. You could limit your entry to a single car or locomotive..... remember any scale or gauge is acceptable, from Z to live steam. You could also consider entering your favorite entire train. Alternatively, you could focus on structures and enter a single structure or a full scene with several buildings. Remember, there is



no limit! You might want to build a large or small display or diorama, with basic details or highly detailed. Which-ever, this could be an opportunity to build a component of your home lay-out....to be incorporated into the layout at a later date. Several of the past entries have been used in this way, to a great benefit of the modeler. Possibly, the ultimate entry could be an entire operating layout (albeit, somewhat small.....remember, it has to fit through the door)! This is intended to be a fun filled event, with the entry possibilities only limited by your imagination, creativity, and enthusiasm to participate.

The judging will be by popular vote, so crowd appeal will be important. **The event will take place at The Turkey Creek Division June meeting, so you have more than four months to prepare your entry.** As in the past, there will be three places plus honorable mentions awarded for this challenge, plus awards for the "Most Creative," the "Most Whimsical," and as noted above the Best Animation entries. But, again, I want to emphasize that the participation is the important aspect of this program. So, if you're interested in being involved, start thinking about your model entry now. There is plenty of time, but don't put it off. This will be another fun event!

Please join in on
the fun and

BUILD
BUILD
BUILD

BUILD

BUILD

BUILD

BUILD

BUILD

Drop me an e-mail and let me know if you will be joining the fun this year and what scale you will be modeling.

1. Larry Alfred, MMR...
- 2.) Ron Morse, MMR... **yes... 'HO' Scale**
- 3.) PAT HARRIMAN
- 4.) Dave Jacobs
- 5.) Fred Hulen
- 6.) Larry Diehl
- 7.) Gary Sidebottom...
- 8.) FRAN HALE, MMR
- 9.) MILES HALE, MMR



- 10.) Paul Myers
- 11.) Marty Vaughn, MMR
- 12.) Jack Ferris
- 13.) JIM gameson
- 14.) Shelly LevY
- 15.) Kent Hurley
- 16.) Louis Seibel
- 17.) Bob Jefferis...
- 18.) Warren Weston, MMR
- 19.) Brad Morneau...
- 20.) Jack Rosenfield
- 21.) Jim Flynn...
- 22.) CHARLES STAPLETON, MMR
- 23.) TED Tschirhart
- 24.) steve Mckee ...
- 25.) CHUCK HEYING, MMR
- 26.) John Breau...
- 27.) kerry lindenbaum
- 28.) Gary Davidson
- 29.) Gary Hankins
- 30.) Roger Quinlan
- 31.) Bob Bayley...
- 32.) Paul Richardson, MMR
- 33.) Bob Miller, MMR
- 34.) David E. Lindquist
- 35.) Keith Jordan
- 36.) Mike Fyten
- 37.) Dave Engle
- 38.) Bill Craig
- 39.) Mike Porter
- 40.) Dave Jacobs
- 41.) Jack Boren
- 42.) Lon Johnson
- 43.) RICK MCCLELLAN, MMR
- 44.) Bill Humenczuk
- 45.) Bill Hirt
- 46.) Wm. B. Alpert
- 47.) Dr. James Budde
- 48.) Charles R. Hitchcock, MMR
- 49.) STEVE PRIEST, MMR
- 50.) Joe Robertson, MMR
- 51.) Steve Mckee
- 52.)

- 53.)
- 54.)
- 55.)

Ron Morse, MMR

Morse Productions

ronmorsemmr@gmail.com

or visit my BLOG site at



TRAIN OPEN HOUSE

First Event of the 2010 Season – Five Areas in Play

**Saturday, March 20 – 9 a.m. to 3 p.m. – No Admission Fee
McGee Sports Center 3800 College Avenue Conway, AR**



Many train layouts will be operating throughout the day:

- The medium-size HO layout by the Central Arkansas Model Railroad Club in Conway is 8x20 feet with a double main line and many fully scenicked areas

- Youngsters can participate in hands-on fun on a HO-scale layout with the trains kids love – Thomas, James, and Emily – the “very useful engines” made famous by the PBS TV series and through books and videos

- A HO old-timey Western layout with trains of that era

- A vintage O-gauge, three-rail Marx train layout rendered in 1950s style

- A G-scale Circus Train display.

Club members will answer questions about the world’s greatest hobby, conduct demonstrations, and “talk trains” with visitors.

**Contact Daniel Gladstone at 501-269-3030 or by e-mail: ca_mrc@yahoo.com
For more info and photos, visit our website: www.artrains.org**



Great Plains Train Station



TOTOTRAINS, LLC

SPECIALIZING IN EUROPEAN TRAINS
WALTHERS/MÄRKLIN/LGB DEALER
REPAIRS•SERVICE
NEW/USED•BUY/SELL
THU-SAT: 10.00AM-4.00PM
WWW.TOTOTRAINS.COM
1031 VERMONT STREET, SUITE A
LAWRENCE, KS ----- 785-766-0467





16TH ANNUAL TRAIN SHOW

**SPONSORED BY THE NEBRASKA WEST-CENTRAL DIVISION OF
THE NATIONAL MODEL RAILROAD ASSOCIATION**

LOCATION: D&N EVENT CENTER

501 East Walker Road

North Platte, Nebraska

APRIL 24th AND 25th, 2010

HOURS: 9:00 A.M. - 5:00 P.M. SATURDAY THE 24th

AND 10:00 A.M. - 4:00 P.M. SUNDAY THE 25th

ADMISSION: \$3.00 CHILDREN UNDER 12 \$1.00

(under 5 with paid adult free)

TRAIN LAYOUTS AND DISPLAYS,

VENDOR TABLES SELLING RAILROAD ITEMS

**NOTE TO VENDORS: TABLES ARE \$10 EACH TILL APRIL 1ST, AFTER APRIL 1ST THEY
ARE \$15**

**UNION PACIFIC TOURS WILL BE AVAILABLE AS AN EXTRA FARE ITEM
(Saturday only)**

FOR ADDITIONAL INFORMATION CONTACT:

Gene Tacey

P.O. Box 485

Sutherland, NE 69165

308-386-2489

taceys@gpcom.net



WE BUY AND SELL MODEL TRAINS

Looking to sell?

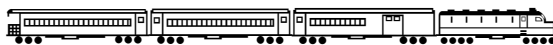
We will buy outright or consign your model railroad collection. No collection is too large. We can make it much easier than trying to sell it yourself.

Looking to buy?

We have hundreds of auctions closing daily for new and used model locomotives, rolling stock, accessories, and more. Every era, every scale.



Visit www.GoMotorBids.com for more information, or to see all the items currently up for bid.





Layout Displays • Manufacturers Exhibits • Vendors
Railroad Collectibles and Artifacts,
Train Ride for the Kids,
Fun for the Whole Family

Saturday June 26, 2010 9 am - 5 pm
Sunday June 27, 2010 9 am - 4 pm



Come Join The Fun at the
Overland Park Int'l Trade Ctr
115th and Metcalf
Overland Park, Ks 66211

Adults \$10.00/day \$18.00/2 day pass
Kids 16 and under FREE

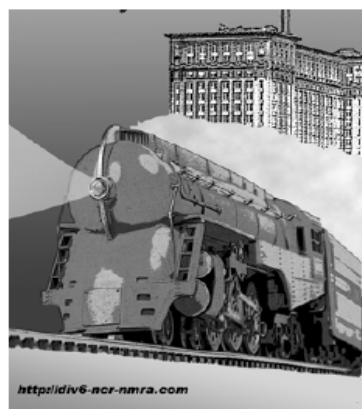
For more information
WWW.HAGRS.COM or 913-406-3400

Division Six of the
NCR- North Central Region of the
NMRA- National Model Railroad Association presents-



NORTH CENTRAL EXPRESS 2010

THURSDAY - FRIDAY - SATURDAY - SUNDAY
OCTOBER 21-22-23-24, 2010
LIVONIA, MICHIGAN, USA



WELCOME to the NCR Model Railroad Convention, *NORTH CENTRAL EXPRESS 2010!*
The convention is being hosted by DIVISION SIX, located in the western Detroit metro area.
We are planning a great weekend of model and prototype railroading, just for YOU!

EVENT HIGHLIGHTS INCLUDE-

- * Operation sessions available Thursday, Friday, Saturday
- * FREE bag of model railroad "stuff" first 200 registered
- * Extra Best in Show and Participants Choice Contest Awards
- * All-you-can-eat Pancake Breakfast on Sunday morning
- * Keynote speaker, Art Fahie of Bar Mills Products on Sunday morning
- * Special event HO & N scale billboards on sale
- * 15+ Workshops on

Friday and Saturday

- * 20+ model layouts to visit
- * Door Prizes awarded Friday and Saturday
- * Silent Auction Fund-Raisers!
- * Special DAY PASS entry available!
- * Event site- Livonia Marriott, Laurel Park Mall

- * Prototype tours available on Friday
- * NMRA Model and Photo contests
- * Limited special event shirts on sale
- * Online Registration available, see website!
- * EVERYONE welcome to attend!

For more information or questions answered, contact - Barry Hensel 734-397-5182 (5pm-10pm) email- barry76Lt@wowway.com, OR Glenn Joppich 734-464-6004 (5pm-10pm) email- steambigot@yahoo.com
and visit our web pages at- www.div6-ncr-nmra.com



Steam Train Ride

Los Angeles to San Diego May 1, 2010

San Diego to Los Angeles May 2, 2010



Tickets for this special steam train excursion are available exclusively through the Central Coast Railway Club, P.O. Box 434, Santa Clara, CA 95052 and are not available through Amtrak ticket agents or call center.

For more information please visit www.GoldenStateRails.com,
e-mail Info@GoldenStateRails.com, or call 408-256-8118.

- * \$99 steam train one-way
- * \$198 steam train roundtrip (overnight accommodations in San Diego required and not included in price)
- * \$141 steam train one-way with same day coach return via Amtrak Pacific Surfliner®
- * Dome car seating onboard steam train available for additional charge

Fares, routes and schedules are subject to change without notice. Amtrak and Pacific Surfliner are registered service marks of the National Passenger Railroad Corporation.



The Crossroads of Eastern Iowa



Hosted by the
Eastern Iowa Division
June 10 - 13, 2010
Cedar Rapids, Iowa



Official Convention Site:
Kirkwood Community College
Center for Continuing Education
7725 Kirkwood Blvd. S.W.
Cedar Rapids, IA 52404

And



Official Convention Hotel:
Clarion Hotel & Convention Center
525 33rd Avenue, S.W.
Cedar Rapids, IA, US 52404



- **Thursday Night Ice Breaker:** Arrive early to pick-up your registration packet at the Clarion Hotel, which will include information about Thursday evening layout tours. After that, registration will take place at Kirkwood Community College starting on Friday morning, June 11th, 2010.
- **Prizes:** Special drawings will be held for convention registrants.
- **Model & Photo Contests:** NMRA judging on Saturday, June 12th, 2010.
- **Silent Auction:** A silent auction on Saturday, June 12th, 2010 for convention attendees.
- **Clinics:** A full slate of clinics will be held Friday and Saturday during the convention. If interested in giving a clinic, please contact Michael Armstrong at: pikaaa@a.com
- **Prototype Tours:** The CRANDIC Railway shops and PMX Industries in the Cedar Rapids area.
- **Train Excursion:** The Iowa Interstate Railroad will provide a 3-hour train ride on two of their business cars with an optional photo run by. Seating will be limited. *Note: the train is not handicap accessible.*
- **Banquet Dinner:** Saturday night, June 12th **Cody Grivno**, Associate Editor for Model Railroader Magazine and star of Cody's Office will be our banquet keynote speaker.
- **Layout Tours:** Home and club layouts open for tours all days of the convention.
- **Two-Day Train Show:** Over 90 tables for area dealers, local hobbyists, and other railroad groups. For information on tables, contact Whit Johnson at: whitjohnson@mchsi.com
- **Rail fanning Guide:** A guide of rail fanning spots in the Cedar Rapids / Iowa City corridor will be part of your registration.
- **Non-Railroad Related Activities:** This guide will be part of your registration.
- **Accommodations:** The Clarion Hotel and Convention Center will have a special \$89.95 rate for registered attendees. To get this rate, make your reservation **by May 20th, 2010** and be sure to mention the 2010 Mid-Continent Regional Convention. Contact them at 877-949-2992 or www.clarioncr.com



Mid-Continent Regional Convention / *The Crossroads of Eastern Iowa 2010*

Registration Form

(Please send this registration form in with your payment)

Advance Registration (until March 31st, 2010) is \$50.00 for the convention

Registration (after March 31st, 2010) is \$70.00 for the convention

You can sign up for an NMRA Rail Pass if you are not currently an NMRA member *

Activity/Item	Quantity	x Price	= Total \$
Advance Convention Registration (until March 31 st , 2010) *		\$50.00 per person	
Convention Registration (after March 31 st , 2010) *		\$70.00 per person	
* Add a Rail Pass if you are not currently an NMRA member		\$9.95 per person	
Friday, June 11 th , Prototype Tours: CRANDIC Railroad Shops and PMX Industries		\$30.00 per person	
Friday, June 11 th , Box Lunch between Prototype Tours and Train Excursion		\$10.00 per person	
Friday, June 11 th , Iowa Interstate Train Ride Excursion (Limited seating) <i>Note: the train is not ADA compliant / handicap accessible.</i>		\$40.00 per person	
Banquet Dinner (Saturday, June 12 th)		\$30.00 per person	
Train Show Vendor Tables		\$25.00 per table	
HO Convention Car: ready-to-roll CRANDIC gondola with scrap load, by Athearn		\$25.00 per car	
2010 Convention Polo Shirt, please circle size(s):		\$30.00 S M L XL XXL XXXL	
2010 Convention Patch		\$5.00 each	
2010 60 th Anniversary Pin	1	Included with registration	Included
2010 Convention Pen	1	Included with registration	Included
Layout Tour Maps and Directions	1	Included with registration	Included
Two-Day Train Show Admission	1	Included with registration	Included
Railfanning Guide for the Surrounding Area	1	Included with registration	Included
Non-Rail Activities	1	Included with registration	Included
Total \$ Enclosed:			

Checks / Money Orders only (no credit cards or cash, please)

Name: _____ Email: _____

Address: _____ Phone: _____

City: _____ State: _____ Zip: _____

Additional Attendee Names: _____

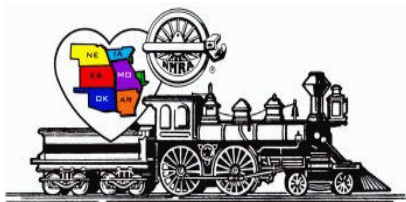
Make Check or Money Order Payable to: **2010 MCoR Regional Convention**

Mail form and payment to: **Tony Bowen, MMR**

588 6th Ave

Coggon, IA 52218-9618





Celebrate the 25th Anniversary of the Turkey Creek Division

August 7, 2010
Turkey Creek Show

Lenexa Community Center
 13420 Oak, Lenexa, KS (Pflumm & Santa Fe Drive)

Times 8:30 to 3:00

Layout Tours 3:30 to 9:00

Activities planned for next year's meet include:

Clinics – a full slate of clinics covering many aspects of the hobby.

Model & Photo Contests – by NMRA judging and Popular vote. *Each model (up to a maximum of 5 models) you enter in the model contest will automatically qualify you to be entered in to a special drawing to receive a \$50.00 gift voucher.*

Special Youth Award for the best overall youth model entry.

Door Prizes – Additional door prizes will be set aside for advance registrants.

Display Layout and Layout Tours – In addition to the display layout at the meet, several local modelers will be opening their homes to layout tours in the afternoon and evening. Layout tour maps will be available at the show to paid registrants.

Swap Tables and Railroad Groups – Expect to find more than 70 tables from area dealers, local hobbyists and other railroad groups. One table includes 1 registration; two or more tables include 2 registrations. For information on tables contact Robert Jefferis at jeffbobj@everestkc.net.

Food and Refreshments – Scout Troop 92 will have food and refreshments available during the show.

Turkey Creek 2010 Division Meet Registration Form

Advance Registration: \$4.00 Full Registration: \$6.00 (\$5.00 NMRA member) at door
 Children under 12 free with paid registration

Tables (\$15.00) if paid by December 31, 2009, Starting January 2010 tables will be \$20.00 each
Vendor set up Friday August 6th 5pm to 9pm

		Tables (\$15.00)each	No. Registration \$4.00	Total Cost
Name:				
Address:				
City				
State Zip				
Telephone #:		Total Enclosed:		
E-Mail Address:		Scale Modeled		
More Registrant Names:				
<p>Make Checks Payable to: "Turkey Creek Division"</p> <p>Mail to: Turkey Creek Show, C/o Bob Jefferis, 6000 W. Richards Dr, Shawnee, KS, 66216-1721</p> <p>For more information contact Bob Jefferis at 913-631-4441</p>				



THE SWITCHING LIST

*=new since last issue

The Switching List contains all known Mid-Continent Region, NMRA, train shows and Division meetings. It also lists all known club shows and swap meets in the Mid-Continent Region (IA, IL, MO, AR, NE, KS, and OK). To list your event, send it to: garyonho@cox.net, or Gary Hemmingway, 3201 SW Stone Ave., Topeka, KS 66614. To subscribe, or unsubscribe, to The Switching List send an email to the above link. Look for us on the MCoR web site: www.mcor-nmra.org. Put me on your newsletter list.

DIVISION MEETINGS

KANSAS CENTRAL DIVISION Meetings are at 1:00 pm. For the full schedule check the MCoR website or email: garyonho@cox.net. The next meeting is

***February 6, 2010** Tom Katafiasz host: 2105 Northwood Ln, Salina, KS: Turn off Interstate 70 south on Ohio Street, Turn Left (East) on Iron Street and go to top of hill, turn Right (South) on Marymount Road go past the stop light, turn left (East) on Northwood (first street past stop light) Tom's house is on the corner (first one on your left (north)) once you turn onto Northwood. Clinic Topic: "A Beginner's Experience with DCC-Both Good and Bad."

GATEWAY DIV. (ST. LOUIS, MO) meets 3rd Monday each month, 7:00 P.M. Odd numbered months: Trinity Lutheran Church, 14088 Clayton Road at Woods Mill Rd (Hwy 141), Ballwin, MO; Even numbered months: VFW Hall, O'Fallon, IL <http://www.gatewaynmra.org/division.htm>

TURKEY CREEK DIV. (KANSAS CITY, MO & KS) monthly meetings 4th Tuesday, 7:00 P.M. Johnson County Offices, NE Branch, 6000 Lamar, Shawnee Mission, KS (DMV Building on SW corner of Lamar and Martway)

WESTERN HERITAGE DIVISION (OMAHA, NE / COUNCIL BLUFFS, IA) meets second Saturday (except June and December) at noon. Sump Memorial Library, corner of Washington and Second Streets in Papillion (across from Runza). Visit www.whdnmra.org for more info and a map.

EASTERN IOWA DIVISION

* The Eastern Iowa Division has scheduled its next meeting for Saturday, January 23, 2010 at the First Christian Church, 510 E. 15th St., Davenport, IA In addition to the usual quick business meeting, we will have a clinic or two, model judging will be available, and the ever-popular Bring-N-Brag/Show-N-Tell event will take place. More information will be available on the Eastern Iowa Division web site, which is <http://eid.mcor-nmra.org/index.html> and through our newsletter – *The Wig-Wag* – which is also online at the same web address.

INDIAN NATIONS DIVISION meets at the New Hardesty Library at 8316 E. 93rd. St. (Just east of Memorial) in Tulsa, OK. The time is from 9:30am to 12:30pm. Each meeting we have various presentations from clinics, to slide shows. After the meetings we have a layout tour at one of the members layouts. Meeting dates are: January 26, 2008, March 29, 2008, May 31, 2008, September 20, 2008, and November 19, 2008. Contact Dave Salamon at drs_rr@yahoo.com for further information.

KATE SHELLEY DIVISION now meets the 4th Thursday at the Ames Public Library in Ames, Iowa. Time is 7 Pm to 8:45 PM. Due to Thanksgiving being the 4th Thursday we usually try to meet on the 3rd Thursday. Call Superintendent from NMRA web sight for latest information. All are welcome to attend the meetings. The library is located at 515 Douglas Ave. We meet in the upstairs meeting rooms. December we have NO meetings due to the holidays

PLATTE VALLEY DIV. (HASTINGS, GRAND ISLAND, KEARNEY, NE) meets 2nd Tuesday of each month at 7:00 p.m. in members homes on a rotating basis. Info: John O'Neill, MMR, Div. Dir., 308-384-5011 or jponeill@computer-concepts.com.

WESTERN KANSAS DIVISION (GARDEN CITY, KS) Meets every Monday evening from 7:00 P.M. to 9:00 P.M. at 4091/2 N. Main St. (second floor above "Stage" department store) 7 layouts on display (2-HO, 5-N) Operating sessions available Info: Robert Simmons, Division Director (620) 521-3591 or ras@odsgc.net.

INDIAN NATIONS DIVISION Meets 5 times a year, remaining 2009 meetings: May 2, Theme - Steam Locomotives; September 19, Theme - Freight Cars; November 14, Theme - Structures/Dioramas. Meet from 9:30am-12:30pm at the Hardesty Library, 8316 E. 93rd St, Tulsa, Oklahoma. After the meeting we visit one of the local layouts. Web page: www.tulsanmra.org
Superintendent - Dave Salamon (918)272-5512 or drs_rr@yahoo.com

Division Directors, Train Show Chairs, or Club Show

Chairs: Let's get the word out about your 2008 or 2009 event! Get your information to Gary at any of the above addresses.

The Switching List is a service of Mid-Continent Region, NMRA.

FEB 20, 2010—9TH ANNUAL LAWRENCE TRAIN SHOW & SWAP MEET, Douglas County Fairgrounds, Building #21, Lawrence, KS, 9 am – 5 pm, Info: Jim Taylor, 225 N. Michigan #5-25, Lawrence, KS 66044, 785-841-6256 or jimforegolf@hotmail.com, www.lawrencemodelrailroadclub.org

***FEB 20-21, 2010—LINCOLN AREA MODEL RR CLUB AND MUSEUM 2010 ANNUAL SPRING SHOW**, Lancaster Event Center, 4100 N. 84th St., Lincoln, NE; Sat 9 am—5 pm, Sun 10 am—4 pm; Adm: Adults \$6, Children under 12 free w/pd adult, Seniors (60 and older) \$5; setup Sat 7 am—9 am; operating layouts, clinics, silent auction (sat), contests: structures, open class, 1959s/transition period motive power, photography: MOW equipment, passenger equipment, NMRA & popular vote judging (sat), garage sale (sun); Info: Charles Buswell, 2749 California Ct., Lincoln, NE 68510, buzzmmr@windstream.net; vendor tables are sold out.

FEB 27, 2010--7TH ANNUAL GREAT NWA MODEL TRAIN & HISTORICAL MEMORABILIA SHOW sponsored by Sugar Creek Model Railroad and Historical Society 9:00 AM - 4:00 PM, Clarion Hotel and Convention Center 211 SE Walton Blvd, Bentonville, AR 72712, Interstate



540 take exit 85 go west on Hwy 71 about 1.3 miles on your right; Fare: adults \$6.00, children under 12 free w/pd adult; Info: Bill Wright, PO Box 3113, Bella Vista, AR 72715, Cell: 479 - 426 - 1544, E-mail: w5mth73@cox.net

FEB 27-28, 2010—GREAT TRAIN EXPO, American Royal Complex, Kansas City, MO; 10 am – 4 pm each day, Adm: \$7 adult, under 12 free w/pd adult.

MAR 6-7, 2010—GREAT TRAIN EXPO, Tulsa Convention Center, Tulsa, OK; 10 am – 4 pm each day, Adm: \$7 adult, under 12 free w/pd adult.

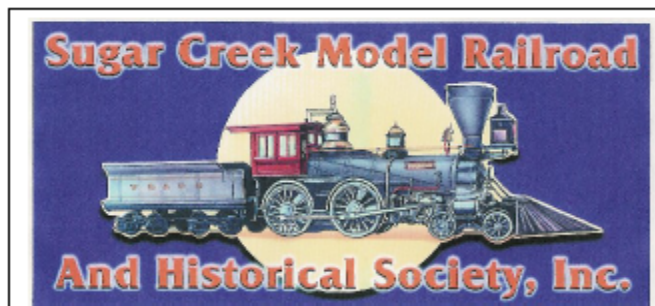
MAR 27, 2010--THE JOPLIN MUSEUM COMPLEX MODEL RAILROAD SHOW AND SWAP MEET 7th and Schifferdecker Streets in Schifferdecker Park between the golf course and swimming pool; 9:00 a.m. to 3:00 p.m.; attractions include several operating train layouts, over 65 tables of items for sale or trade from scale model trains, collectible antique electric trains, and train collectibles; admission: \$3.00, adults; 12 and under admitted free w/pd adult. All proceeds at the door go to benefit the Joplin Museum Complex. Swap tables are \$15 each. For more information, contact: Rick Gardner, (417) 673-4888; e-mail: rickgardner@sofnet.com; or visit: www.tristatamodelrailroaders.com

MAR 27-28, 2010—GREAT TRAIN EXPO, Century II, Wichita, KS; 10 am – 4 pm each day, Adm: \$7 adult, under 12 free w/pd adult.

APR 11, 2010-- SPRINGFIELD TRAIN FAIR, Illinois State Fairgrounds Orr Bldg., Springfield, IL, 10 am – 4 pm, Admission is \$4 per person and kids 10 and under are in for free! Contact person Tracy Bailey - springfieldmodelrailroadclub@yahoo.com

***APR 17, 2010--THE OZARKS MODEL RAILROAD ASSOCIATION TRAIN SHOW** from 9 to 3, Saturday, April 17 at the Springfield Catholic High School, 2540 S. Eastgate, Springfield, MO. In addition to swap tables and model contest we are planning to have some clinics and a tour of a couple of layouts. Admission: Adults - 13 & up - \$5.00; Children - 12 & under - FREE when accompanied by an Adult. For more information on show, Contact: Co-Chairmen - Dale Irvine Email: bowlanmrr@mchsi.com or Ted Beresky Email: tberesky@hotmail.com, Phone 417-459-6042. For vendor information Contact: Gary Mills - 417-725-1433.

APR 24-25, 2010--THE WESTERN HERITAGE DIVISION TRAIN SHOW, Burke High School (just off Dodge St) Omaha, NE \$6 admission with \$1 off for food donation. Children 12 and under free. Sat 9-5 Sun 10-4 Info: Barbara Lundquist, Clerk & Show



**The SEVENTH Annual
Great NWA**

Model Train & Historical Memorabilia Show

**Presented by the Sugar Creek Model Railroad
and Historical Society**

**at The Clarion Hotel and Convention Center,
Bentonville, Arkansas**

**Saturday, February 27, 2010
at 9:00 AM - 4:00 PM**

Grand Prize Drawing

**2 FREE Round Trip tickets on AMTRAK
"Texas Eagle"**

www.railroadclubsugarcreek.org

Wanted: Sunset Models and Iron Horse (PSCo) 1:48 3 tr. Shays, running or not, kits or RTR (but not painted, please).

Please contact: leesnover@nac.net.
I also repair and do new drives for the above engines.

Howard Gillespie has worked for the Federal Railroad Administration for 10 and-a-half years as a Regional Manager of Grade Crossing Safety & Trespass Prevention. His program will have an Operation Lifesaver presentation, some interesting aspects with his work, as well as a status update of his HO scale Seaboard Coast Line Tampa Division. He has been a member of the NMRA for several years and an HO scale modeler for over 30. Howard also worked for CSX Transportation and Amtrak before his starting his federal career.

Best regards,

Howard Gillespie, Regional Manager
Grade Crossing Safety & Trespass Prevention
Federal Railroad Administration



TURKEY CREEK DIVISION
4954 Marsh Avenue
Kansas City, MO 64129-2111



FIRST CLASS MAIL
ADDRESS SERVICE REQUESTED 4955

mcor-nmra.org/divisions/turkeycreek/

TURKEY CREEK DIVISION MEETING

Meeting and Show Dates for Turkey Creek Division 2010

Meeting February 23
Great Train Expo February 27 & 28
Meeting March 23
Meeting April 27
Meeting May 25
Mid-Continent Regional
The Crossroads of Eastern Iowa June 10-13
Meeting June 22
Meeting July 27
Turkey Creek Divisional Meet August 7
Meeting September 28
Meeting October 26
Meeting November 23
Meeting December 14

