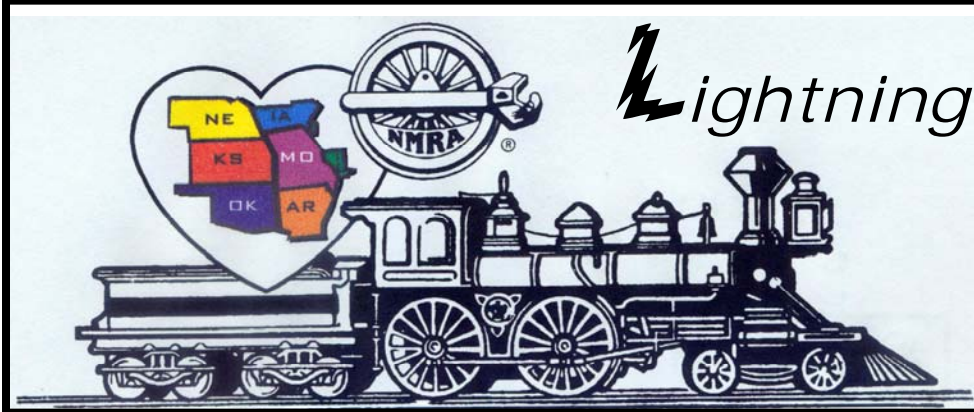


Turkey Creek Division



Lightning Slinger

VOL 26 NO. 11

“For all gauges and all ages”

November 2012

MONTHLY PUBLICATION OF THE TURKEY CREEK DIVISION
OF THE MID-CONTINENT REGION, NMRA

November 27th ... 7:00 p.m.
Presentation by Paul Myers, MMR
“Geared Locomotives ...
or something you can sink your teeth into ... ”

...

LOCATION:

Nieman Elementary School

10917 W. 67th Street

Shawnee, Kansas

(1 mile west off I-35 ... 67th Street Exit)



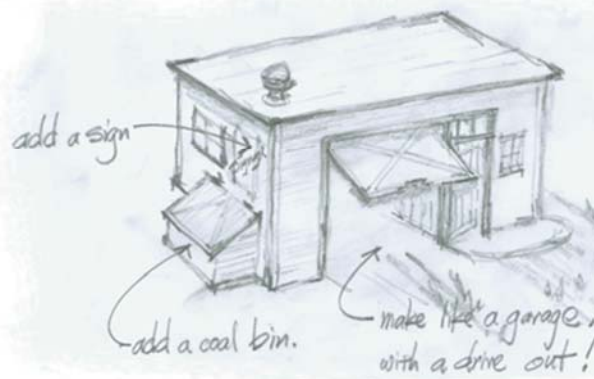
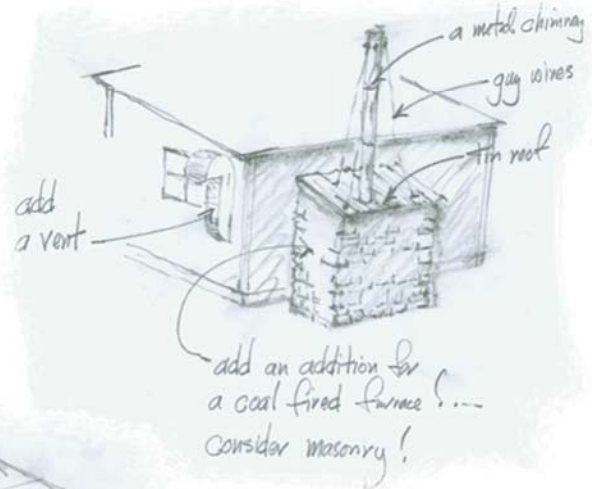
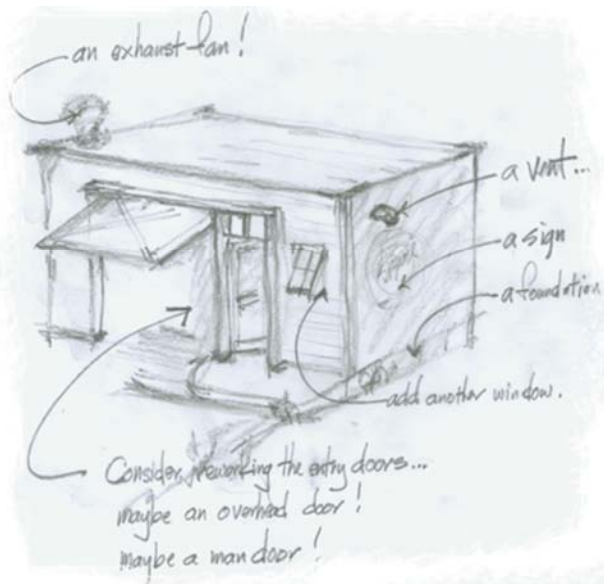
November 2012 Newsletter - Turkey Creek Division

Hello Everyone.

October 23rd, a good time seemed to be had by all!!!!!! I believe!!!



I think our "Make & Take" clinic directed by Miles and Fran Hale really went well. Our first time to assemble a laser cut wood kit at a meeting. Although a simple wood rectangle box. Let your imagination go a bit. Add some little details to add interest ... consider alterations:



Make it a part of your "Modeling Challenge" entry ... May 2013 ... you could win!!!

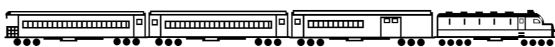




We had nominations for 2013 officers. We will be voting on these officers. If anyone has interest for next year, please come forward at the November meeting.

Ray Brown for Superintendent
Robert Spurgat for Paymaster
Bob Jefferis for Clerk

While we were concentrating on our building kits, several guys were judging cars brought by Don Ball. Don is well on his way to achieve Master Model Railroader! I hope he makes it. Good Luck!



Several people were experimenting with a new way of finishing wood ... "alcohol markers". Several people have asked where to get these artist markers. The best selection is at Coldsnows Artist Supply, 10456 Metcalf in Overland Park (immediately west of Metcalf in strip mall – behind Denny's). Several manufacturers; a good grayed wood effect is a marker Copic Sketch "Toner Gray" colors, intensities T4, T5, T6. Take a piece of wood with you to touch the colors to suit your liking. Markers seem to soak into bass wood, darker than on paper! And the color lightens a little after drying. My thoughts!

Our November clinic is a presentation by Paul Myers MMR titled "Geared Locomotives ... or something you can sink your teeth into..." This will be a good presentation showing all kinds of geared designs. Don't miss it!

Sincerely,

Larry W. Diehl
Retiring Superintendent



ole six eyes ...

*and his Floquil paints
and his 5 minute epoxy!*

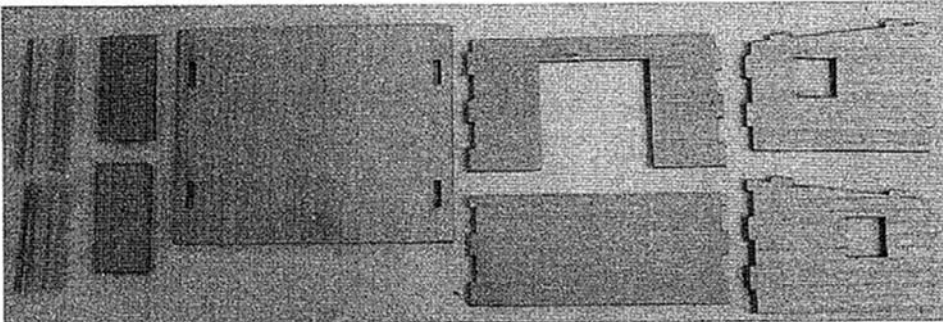


CREATIVE LASER DESIGN, Inc.

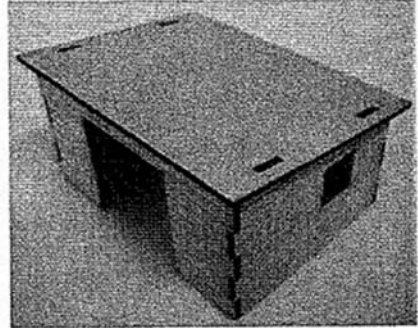
Teamster's Barn

HO- Scale instruction sheets. (Kit#CLD-HO-025)

Picture #1 - Kit Parts



Picture #2



4 Walls, 1 roof, 2 barn doors, 4 angle stock for corner trim.

STEP #1. Review pictures and make sure you have dry fitted all details.

STEP #2. Glue 4 walls together, place roof on top to make sure they are square. See picture #2 above. We use a brown water proof wood glue such as Titebond.

STEP #3. Now you can glue roof in place as seen in picture #2 above.

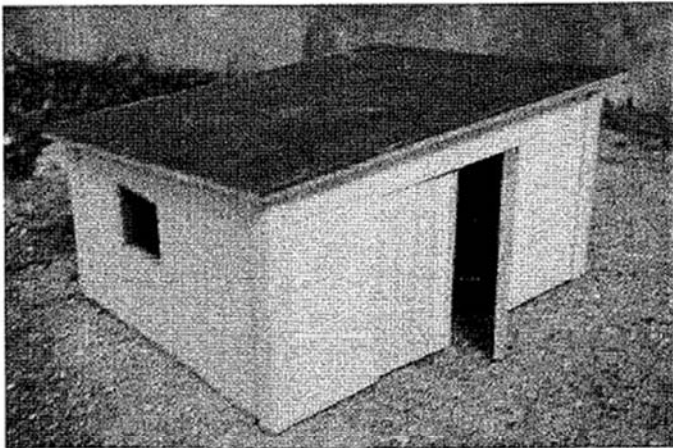
STEP #4. Glue 4 angle stock on corners to hold walls in place while glue dries.

STEP #5. Glue 2 doors in place. Let dry.

STEP #6. Now you should paint the building. Remember this is wood, so you should at least seal it with an oil based primer. "We use spray paints for all kits." Satin or Flat spray paints. Let dry.

STEP #7. Glue black paper on to roof, this will represent tar paper roofing. See picture #3 above.

You are now ready to weather the buildings & add them to your layout.



Thank you for buying our HO Scale Model kit, Teamster's Barn (kit # CLD-HO-025). We also have other Z SCALE, N SCALE, HO SCALE, S SCALE, O SCALE, AND G SCALE kits.

CREATIVE LASER DESIGN, INC.

514 Leroux Road

Lyndonville, Vermont

05851

For custom Laser Cutting and Engraving.

(802) 626- 9254 evenings

Email: dave@creativelaserdesign.com

Web site: www.creativelaserdesign.com

The Teamster's Barn was used during the time of logging with horses and ponies. It was an inexpensive, temporary barn used to keep horses and ponies feed in at the logging site. I have been told that some smaller logging outfits probably used the barn material several times as they moved from one property to another.

I have based this on one that my step father used to build.



NMRA Mid Continent Regional Convention 2013



Hosted by
Turkey Creek Division
June 13th to 16th

to be held at
Holiday Inn Conference Center
101 West 151st Street
Olathe, Kansas 66061

Registration Form

Name of Primary Registration: _____ NMRA #: _____

NMRA membership required to enter model contest.

Spouse's Name (if attending): _____

Names of other registrants: _____

(Spouse will receive a complimentary pass for admission to the train show and contest room. Extra fare participation must be purchased for each person attending these events.)

Address: _____ City: _____ State: _____ Zip: _____

E-mail Address: _____ Phone: _____

Registration Fee (NMRA membership number required for reduced registration fee)

NMRA member - \$35.00 per person (\$45.00 after April 15th)

Non-member - \$40.00 per person (\$50.00 after April 15th.)

Cost	# Tickets	Total Cost

Extra Fare Reservations:

David Popp from Model Railroader will be the guest speaker for the Saturday night Banquet –cost \$35.00 per person

Other extra fare tours are being developed and will be announced at a later date.

TOTAL REGISTRATION:		

Vendor Tables:

Train Show - Saturday June 16th and Sunday June 17th.

\$20.00 per table (\$25.00 after April 15th)

# Tables	
VENDOR REGISTRATION	

Send completed registration form to:

Larry Alfred

14633 S. Chalet Drive

Olathe, Kansas 66062

captlalfred@gmail.com

For any additional information call 913-782-6584

Make Checks payable to: Turkey Creek Division NMRA

MAKE HOTEL RESERVATIONS DIRECTLY TO

Holiday Inn Olathe

(Across from Olathe Medical Center)

101 W. 151st Street

Olathe, Kansas 66061

Call 913-829-4000 and ask for the special NMRA rate of \$78.00 per night.



THE SWITCH LIST – November 2012

*new since last issue

The Switch List contains all known Mid-Continent Region, NMRA, train shows and Division meetings. It also lists all known club shows and swap meets in the Mid-Continent Region (IA, IL, MO, AR, NE, KS, and OK). To list your event, send it to: ku0a@mchsi.com, Nelson Moyer, 28 Ealing Drive, Iowa City, IA 52246. To subscribe, or unsubscribe, to The Switch List send an email to the above link. Look for us on the MCoR web site: www.mcor-nmra.org. Put me on your newsletter list.

DIVISION MEETINGS

COWBOY LINE DIVISION (NORFOLK, NE) meets 3rd Thursday each month, 7:00 P.M. at HyVee East upstairs meeting room. Corner of 1st Street and Norfolk, Ave. Info: Dennis Brandt, Div. Dir: 402-9925-2415 or email dennisbrandt44@gmail.com for more information.

GATEWAY DIVISION (ST. LOUIS, MO) meets 3rd Monday each month, 7:00 P.M. Odd numbered months: Trinity Lutheran Church, 14088 Clayton Road at Woods Mill Rd (Hwy 141), Ballwin, MO; Even numbered months: VFW Hall, O'Fallon, IL <http://www.gatewaynmra.org/division.htm>

INDIAN NATIONS DIVISION Unless otherwise specified, all Indian Nations NMRA meets are held at the new Hardesty Library, 8316 E. 93rd St., just east of Memorial Rd. in Tulsa, OK. The library opens at 9:00 am and the meetings start at 9:30 am. Web page: www.tulsanmra.org Superintendent - Dave Salamon (918)272-5512 or drs_rr@yahoo.com

KANSAS CENTRAL DIVISION Meetings are at 1:00 pm. For the full schedule check the MCoR website or email: garyonho@cox.net.

KATE SHELLEY DIVISION meets the 4th Thursday of every month except Nov. which we meet the 3rd. Dec. we have no meetings. The Ames Public Library is being remodeled, so contact KSD officers per the NMRA website for latest meeting place. This arrangement is in effect until mid-summer 2014. Business meeting starts at 6 PM and at 7 PM we have a get together, anything railroad goes. The Library is at 515 Douglas Ave. Contact KSD thru the NMRA web site.

OK HEARTLAND DIVISION, NMRA meets in the even months in the Oklahoma City area. All who are interested in Model railroading are welcome. Info: www.okcnmra.org

PLATTE VALLEY DIV. (HASTINGS, GRAND ISLAND, KEARNEY, NE) meets 2nd Tuesday of each month at 7:00 p.m. in members homes on a rotating basis. Info: John O'Neill, MMR, Div. Dir., 308-384-5011 or jponeill@computer-concepts.com.

TURKEY CREEK DIVISION, NMRA, Meetings are held on the fourth Tuesday of the month at 7 p.m. October 23, and November 27 meetings will be at the Nieman Elementary School, 67th & Nieman Road, Shawnee, KS. The December

meeting will be at Knox Presbyterian Church, 9595 W. 95th St., Overland Park, KS 66212. Enter SE-most door.

The date of the December meeting has not been determined, but it will likely be on the 11th or 18th. Check the Division Timetable at <http://www.tc-nmra.org/TC-Calendar.html> for current information.

WESTERN HERITAGE DIVISION (OMAHA, NE / COUNCIL BLUFFS, IA) meets second Saturday (except June and December) at noon in the Sump Library at 2nd & Washington Streets in Papillion (across from Runza). Visit whdnmra.info for more info and a map. The new web site is found at <http://www.whd.mcor-nmra.org>

WESTERN KANSAS DIVISION (GARDEN CITY, KS) Meets every Tuesday evening from 6:30 P.M. to 9:00 P.M. at 4091/2 N. Main St. (second floor above "Stage" department store) 7 layouts on display (2-HO, 5-N) Operating sessions available Info: Robert Simmons, Division Director (620) 521-3591 or ras@odsgc.net

TRAIN SHOWS & MEETS

November 17-18, 2012--BOOT HILL MODEL RAILROAD CLUB TRAIN SHOW, NOTE THE NEW LOCATION Western State Bank Building, 11333 South Highway 283, Dodge City, KS 67801 (Junction of Hwy 283 and Hwy 56), Sat 10AM to 6PM, Sun 11AM to 4PM, Operating layouts in several scales, Model Train Vendors, Door Prizes, Lunch Counter, Info: Robert Simmons ras@odsgc.net.

November 24, 2012 - JOPLIN MISSOURI – THE JOPLIN MUSEUM COMPLEX'S TRAIN SHOW AND SWAP MEET will be held on Saturday, November 24th 2012, at the Joplin Museum Complex. The Museum Complex is located at 7th and Schifferdecker Streets in Schifferdecker Park. Hours will be from 9:00 a.m. to 3:00 p.m. Attractions to include several operating model railroad layouts along with over 65 tables of items for sale or trade. Admission: \$3.00, adults; children 12 and under admitted free with paid adult. All proceeds at the door go to benefit the Joplin Museum Complex. For more information, call Rick Gardner at (417) 673-4888; e-mail: rickgardner@sofnet.com; or visit: www.tristatamodelrailroaders.com

November 24-25, 2012 – THE GREAT TRAIN EXPO, Gateway Center, Collinsville, IL, visit <http://greattrainexpo.com/schedule.html> for additional information.

November 24-25, 2012 - Rocky Mountain Toy Train Show, Denver Merchandise Mart, 451 E. 58th Ave. Denver, CO

November 25, 2012 – MID-AMERICAN TRAIN & TOY TRAIN SHOW, KCI Expo Center, 11728 NW Ambassador Drive, Kansas City, MO. Toys, trains, collectibles, and more. Admission \$5 adults, 12 and under free with paid adult. Open 9 a.m. to 2 p.m. (7 a.m. early admission \$10). Contact Steve & Sherri Stich at 913-651-5864 or visit <http://www.MidAmericanTrainAndToyShow.com>.



December 1, 2012 – TRAIN OPEN HOUSE, McGee Center, 3800 W. College Avenue, Conway, AR, sponsored by the Central AR Model RR Club (CAMRC). 9 a.m. to 3 p.m. Free admission, but donations are gratefully accepted to help keep the trains running. This event is not a traditional swap meet, and buying-selling cannot be conducted because of the rules of the facility. The featured layout at this event will be the 12x14-foot Lionel O-gauge modular layout with four interconnected platforms designed and built by a group of Lionel loyalists in the central AR area. The layout will include two main lines, many operating accessories, and two platforms with Dept 56 buildings from the “Christmas in the City” and “North Pole” series. The action accessories that can be activated by visitors through pushbuttons mounted on the perimeter fascia trim. The Christmas theme of this event will offer a dramatic reading of THE POLAR EXPRESS book at 11 a.m. accompanied by sleigh bells. The Lionel version of the Polar Express train will be running on the layout. As in the book and movie, children may appear in “uniform” for this reading – in pajamas! Also, the popular HO-scale THOMAS layout will be in operation for hands-on fun for kids with four main lines for Thomas, Percy, James, and Emily “very useful” locomotives.

December 1-2, 2012 – OKLAHOMA CITY TRAIN SHOW, 3200 Stage Coach, Oklahoma City, OK (OKC Fairgrounds).

December 13-31 – All Aboard: Lionels at the Library, open during regular library hours but closed Christmas Eve and Christmas Day. Santa’s Train Team of Lionel loyalists and other hobbyists invite train lovers to the fourth annual, family-friendly event: “All Aboard: Lionels at the Library” presented to the public in the Exhibit Hall at Laman Library, 2801 Orange Street, North Little Rock, AR. Admission is free. During the December 2011 holiday season, 5,448 visitors dropped by to see the trains and be “whistleblowers” of the trains in motion. This 24x12-foot layout includes three main lines on two levels, with action accessories, buildings, and Dept 56 items from the “Christmas in the City” and “North Pole” series. Seven display cases will contain vintage Lionel trains, limited edition trains, and the famous “Girl’s Train” by Lionel. A lucky visitor will win a fabulous door prize: the Lionel Polar Express train set. Visitors can activate the action accessories in the layout by pushbuttons mounted at the perimeter. A “scavenger hunt” quiz will engage kids in finding clues placed on the layout. The winner of this quiz will receive a Lionel train set – quite a Christmas present for an observant youngster! On the days immediately before Christmas, Lionel versions of THOMAS trains will be running on the layout: Thomas, James, and Percy.

December 29-30, 2012 – THE GREAT TRAIN EXPO, Overland Park International Trade Center, Overland Park, KS, visit <http://greattrainexpo.com/schedule.html> for additional information.

January 12-13, 2013 – WORLD’S GREATEST HOBBY ON TOUR, ST. LOUIS SHOW, America’s Center,

Introducing the public to model railroading, recruit new club members, see display and operating layouts. Information and layout application at <http://www.wghshow.com/pdf/layout.pdf>. For more information, see www.wghshow.com.

January 19, 2013 – ST. CHARLES MODEL RAILROAD CLUB TRAINFAIR 2013, Heart of St. Charles Banquet Center, I-70 & 5th St. 10:00 a.m.-3 p.m., Admission \$5, children under 12 free with adult admission. Show includes vendors, operating train displays, HO scale module layout, N scale free-MO sections. For information, contact Rod Stratman at 314-960-1955 or visit the web site at <http://www.stcharlesrailroadclub.com>.

***January 26, 2013 - 22nd Annual La Crosse Great Tri-State Rail Sale**, La Crosse Center, 2nd and Pearl St, La Crosse, WI, 9 a.m.to 3 p.m. Admission \$5.00, children under 12 free. Vendors from six states, over 280 tables. All scales, antiques, memorabilia, books, magazines, pictures, hobby supplies and more. Contact Dan Anthony at 608-498-9522 or 608-781-9383 or visit www.4000foundation.com for information. Proceeds go for maintaining and restoring the La Crosse Short Line Railroad display.

February 9, 2013 – FOX HIGH SCHOOL AND DIRK’S TRAINS, THE WARRIOR EXPRESS, Fox High School, 751 Jeffco Blvd., Arnold, MO 63010, 10 a.m.-3 p.m., Admission \$3, 12 and under free. Operating layouts. Vendors, 220 tables. Contact Dirk Reynolds, 1232 Glenwood Drive, Columbia, IL 62236m 618-673-2237.

***February 9-10, 2013 (note date correction) – WICHITA TRAIN SHOW & SWAP MEET**, Cessna Activity Center 2744 George Washington Blvd. Wichita Kansas. Admission \$6.00[good for both days]. Children 10 and under free with paid adult. Scouts in uniform are admitted free. Two Full Days of Excitement, Operating Modular Layouts, Switching Contest, Model Contest, Photo Contest, Live Clinics, Over One Hundred Tables, Home Layout Tours, Vendors: Eight foot tables \$25.00 each. Advance Table Registration before 12/31/12 take 10% off. Contact Phil Aylward 316-830-3498 or Engine House Hobbies 316-685-6608 or 1-800-586-3498 Mail Registrations to 603 Chestnut. Halstead, KS 67056-2302 Email; aylward1@cox.net

February 23, 2013 – TENTH ANNUAL GREAT NWA MODEL TRAIN SHOW, 9 a.m. to 4 p.m., Holiday Inn NWA Convention Center, Springdale, AR. Grand prize drawing for two round trip tickets on Amtrack texas Eagle, over 40 vendors from three states, layouts, model demos, door prized, and more. For more information email train072@cox.net or visit www.trainshow-NWA.org.

March 16, 2013 - 35th ANNUAL OZARKS MODEL RAILROAD ASSOCIATION TRAIN AND SWAP MEET, REMINGTON’S 1655 W. Republic Road, Springfield, MO 65807. Time: 9:00am to 3:00pm. Operating display layouts from AR, KS, MO and OK, many interactive activities for kids including operating a locomotive simulator, hands on modeling tips, ride the Kiddie Train, meet representatives from many railroad manufacturers, get you old pre-1970 train appraised or



TURKEY CREEK DIVISION
4954 Marsh Avenue
Kansas City, MO 64129-2111



FIRST CLASS MAIL

ADDRESS SERVICE REQUESTED

mcor-nmra.org/divisions/turkeycreek/

OFFICERS

Superintendent

Larry W Diehl
913-338-2300
ldiehl@aci-boland.com

Paymaster

Robert M Spurgat
spurgat@ponyexpress.net
(816) 233-0046

Clerk

Robert Jefferis
Jeffboj@everestkc.net
(913) 631-4441

Division Director

Louis O Seibel
HP: 913-393-3495
C: 913-927-6850
L-seibel@comcast.net

Train Show Chairman 2011

Louis O Seibel
HP: 913-393-3495
C: 913-927-6850
L-seibel@comcast.net

Membership Chair

Jack Rosenfield
913-451-2177
rosenfieldjack@gmail.com

L S Editor

Ted Tschirhart

HP: 816-861-3449
tedtschi@kc.rr.com

Lightning Slinger
lightnings@kc.rr.com
Nov Deadline
Oct 28 2011

AP Merit Awards & Achievement

Joe B. Robertson, MMR
HP: 816-331-2773
piperva@aol.com

Past Superintendent

Shelly Levey
913-438-7065
shellylevy@everestkc.net

Web Master

Paul Myers, MMR
HP: 816-734-3719
paulwmyers@kc.rr.com

Web

<http://www.tc-nmra.org>
Turkey Creek Division
IS A 501(C) (3)
ORGANIZATION

Your NMRA membership entitles you to these benefits:

Kalmbach Memorial Library

One of the world's largest "railroads-only" libraries. Contains prototype and modeling books and magazines, out-of-production kit instructions, and more.

- www.nmra.org/library
 - Call: 423-892-2846
 - Fax: 423-899-4869
- Email Brent Lambert: lib@hq.nmra.org

NMRA Online Archives

Over 10,000 photographs, slides, plans, drawings, erection elevations, paint schemes, and more, with additional scans being added all the time. High resolution files are available for download at a discount to members.

www.nmra.org, click "Online Archives" button

"Members-Only" website

This portion of www.nmra.org contains content exclusively for NMRA members, including reprints of Region and Division newsletter articles, newly updated Data Sheets, reprints of articles from classic NMRA magazines, downloadable calendar photographs and screensavers, and much more. This area is constantly being updated so check back often!

www.nmra.org, click on "Members Only"

NMRA Company Store

The NMRA's Company Store offers many items, from apparel to mugs to gauges, available only to NMRA members.

www.nmra.org, choose "online store", then "Members-Only Company Store"

Turkey Creek Division of the NMRA

Meetings and Events for 2012

Meetings are on the 4th Tuesday each month

- October 23rd Nieman Elementary School
- November 27th Nieman Elementary School
- December 11th or 18th (to be decided)

