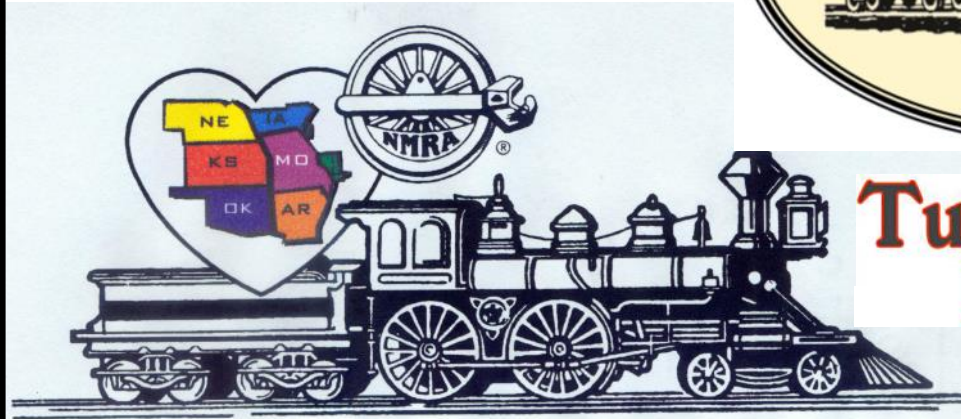


Lightning Slinger



Turkey Creek Division

VOL 30 NO. 4

MONTHLY PUBLICATION OF THE TURKEY CREEK DIVISION
OF THE MID-CONTINENT REGION, NMRA
"For all gauges and all ages"

April 2016

Turkey Creek Division Meeting

April 26 2016

At 7:00 pm

Clinic by Mark Juett

How I Built A Model Railroad
In 30 Days

Hocker Grove Middle School

10400 Johnson,

Shawnee, KS 66203-2895





Hello Ray Here,

Well It sounds like some of you are in the same shape as I am. I've heard that some of you are running behind on getting your models ready for the Model Challenge. So at our meeting Tuesday night we will give a proposal for discussion on what we might try. We want to get as many models shown as possible. We don't want to leave anyone out that might not have their model quit done.

I would like to thank Paul Evans for his presentation on the Pueblo Packing Plant. It was very interesting. Even a country boy like me didn't realize all the traffic that went on at a packing plant. I kind of wish I had a packing plant on my layout, it would create all kinds of traffic and more industries.

Our clinic this month will be given by Mark Juett. The topic is "How I Built a Model Railroad In 30 Days". It should be a fun clinic. I can't imagine building a layout in 30 days.

Planning to see you Tues.

Ray Brown
Superintendent
Turkey Creek Division

OFFICERS

Superintendent

Raymond Brown
HP: 913-787-7053
tstwildcats@hotmail.com

Paymaster

Bill Humenczuk
HP: 913-338-4478
bhumenczuk@kc.rr.com

Clerk Louis O Seibel

HP: 913-393-3495
C: 913-927-6850
L-seibel@comcast.net

Division Director

Larry W Diehl
HP: 913-441-1605
C: 816-804-0152
ldiehl@aci-boland.com

Train Show Chairman 2014

Membership Chair

Louis O Seibel
HP: 913-393-3495
C: 913-927-6850
L-seibel@comcast.net

L S Editor

Ted Tschirhart
HP: 816-861-3449
tedtschi@gmail.com

Lightning Slinger
lightnings@gmail.com

AP Merit Awards & Achievement

Joe B. Robertson, MMR
HP: 816-331-2773
piperva@aol.com

Past Superintendent

Larry W Diehl
HP: 913-441-1605
C: 816-804-0152
ldiehl@aci-boland.com

Web Master

Richard Kennedy
HP: 913-796-6830
Richiekennedy56@gmail.com

Web

<http://www.tc-nmra.org>

Turkey Creek Division
IS A 501(C) (3)
ORGANIZATION



All:

I have attached a email from Whit Johnson informing me of his Dad's passing. The funeral details can be found in the link for hoysfuneral.com/obituaries/Richard-Johnson-54/.

Barbra, please send a card to Whit from the Region. I am sending a personal card, in just a short 8 months I have become to see him as a good friend and a man dedicated to MCoR and is always willing to answer my call for help.

Sorry to have to pass on this sad news.

Hank

On Wednesday, March 23, 2016 12:28 AM, Henry W Kraichely <hkraichely@sbcglobal.net> wrote:

Please see the attached the email from Whit Johnson notifying me of his Fathers passing. It will be easier on the family if his Father doesn't continue to receive the NMRA Magazine or any general member correspondence or renewal notices for his membership.

Thank you for your help,

Hank Kraichely
President-Mid-Continent Region

NMRA AP Group Rules and Regulations

The NMRA Achievement Program Yahoo Group is for those who are members of the NMRA and are working on their Achievement Program Certifications. Here you can get questions answered, find a mentor/coach, or get a kick in the pants to get you started. The group is about helping people.

We REQUIRE that you be an NMRA member and if you are signing up, please provide us your NMRA membership number. Not a member? Please join! www.nmra.org. While you are there, read the rules and regulations for the Achievement Program.

<http://www.nmra.org/education/achievement/>

90% of the questions that are being answered on the forum are in the regs.

Naturally things turn to the dark side from time to time, so here are some guidelines.

BEFORE YOU HIT SEND, ASK YOURSELF...

- Did I ask for help?
- Did I help someone?

If your message can't pass the test then you are probably talking about NMRA politics, whining, complaining or way off topic. Please be on your best behavior. This is a fun site and we would like to keep profanity and rudeness off the list. The moderator has an itchy trigger finger!

Topics that are allowed:

- AP Topics on any of the 11 possible AP Certificates
 - MMR questions
 - National/Regional/Divisional/International AP Chairman questions
 - Questions about contest rules
 - Questions about model research, assembly, et al.
- Questions about merit judging

Topics that are NOT allowed:

- NMRA politics
 - Recommendations for improving/modifying or changing AP guidelines (send those to the NMRA)
 - Politics in general
 - Religious topics
 - Off topic gags and jokes
- Accusations or criticism of any member

This is a PRIVATE group for friends that are working on their NMRA and Moderators are not required to warn members of being put on moderate status or suspension or removal of membership. While we are not an NMRA sanctioned group, we do follow NMRA rules and will act to promote the organization.

If you are moderated/banned from the group and you think it was done unfairly, you are welcomed to contact the list owner Scott Perry at scottgperry@comcast.net.

Please address questions to Scott Perry at scottgperry@comcast.net. We're glad to have you aboard!
Scott Perry, List Owner.





Western Heritage Division, NMRA, Inc

*Serving East Central Nebraska and
Western Iowa.*



THE ROAD TO OMAHA

June 2-5, 2016

**Hosted by the Western Heritage Division,
MCOR, NMRA**

Overview

Prototype tours

Council Bluffs Heritage Fleet: Verbal affirmative, details pending.

Henry Doorly Zoo Railroad and Shops: Verbal affirmative, details pending.

Harriman Dispatch Center: Request made. Answer pending.

Contests

Ryan Moats, Chair of Judged Contest.

Scott Crites, Chair of Popular Vote Contest

Favorite Train, Locomotive, Rolling Stock, Caboose, Structure, Display, Model Photo, Prototype Photo, Photo Match, 'Thumbs', First-time Entry, and Local Entry

Rail and Non-Rail Activities



Henry Doorly Zoo, Durham Western Heritage Museum, Lauritzen Gardens, Dodge House (Bluffs), UP Museum (Bluffs), Rails West Museum (Bluffs), Rose Theater (Kids), Children's Museum, Joslyn Art Museum (free), Strategic Air & Space Museum, and '7 Burlington Station'

Clinics

“Omaha and Council Bluffs: 60 years of Railroading through the lens of Ray Lowry” David A. Seidel, President Camerail Club

“Building 844” and Steam Locomotive Construction: John Bush, President of Friends of the C&TS RR

“Building T-Trak” Scott Crites and friend.

Many other topics to be added.

Operating Sessions and Layout Tours

Bob Finkenbiner, Chair

OS Omaha to participate, 6 Op Sessions planned, Sessions Thursday, Friday, Saturday AM, and Layout Tours: Thursday, Friday night, Sunday

Cooperative Swap Meet – Train Show

Held for many years on this weekend by Nebraska-Iowa Railroaders.

Over 25,000 sq. ft. of exhibit space.

We will cooperate by pre-registration of Convention attendees to the show.

They will have room for NMRA members to exhibit layouts: WHD N-Trak layout and Missouri Valley Free-Mo H0, for example.



Banquet

Hotel is famous for 'Whisky Steak'

Planned Buffet:

Three Entrées: Whisky Steak and two others

Two salads

Potato dish

Vegetable

Planned Speaker from local Omaha Railroad to be confirmed.

Committee

Henry Nipper, Chair

Ryan Moats, Contests

Scott Crites, Budget

Bob Finkenbiner, Op Sessions and Layout Tours

Harvey Swanger, Facilities and Transportation

Other volunteers to be added



See You in June?



TRAIN AND TOY SHOW



Big 2-Day Event !!

June 4, 2016 -- 9:00 am to 4:00 pm

June 5, 2016 -- 9:00 am to 2:00 pm

RALSTON ARENA

7300 Q Street – Omaha, NE 68127

*** * Ample Free Parking at the Arena * ***

25,000 square feet with great lighting for display of Train and Toy items for sale including Trains, Tractors, remote control Airplanes, Boats & Cars, etc.

***** Parts and Repair Vendors available at the Show *****

Various Train Layouts will be running – great displays for the entire Family!!

Admission \$6.00 --- Children 12 yrs. & under Free

For more information, please contact any of the following members:

Ron Bond	402-292-3392
Bob Schaffer	402-253-8885
Mark Nelson	402-731-1349

NEBRASKA-IOWA RAILROAD HISTORICAL & MUSEUM SOCIETY

www.ne-ia-railroaders.com



Mid-Continent Regional Convention in Omaha Nebraska and Council Bluffs, Iowa, to be June 3-5, 2016

You are cordially invited to find your way to held June 2- the Mid-Continent Regional Convention in Omaha, Nebraska and Council Bluffs, Iowa, to be June 3-5, 2016. From the headquarters hotel, the Hilton Garden Inn, just off I-29 and I-80 in Council Bluffs you will be able to enjoy railroad history, railroad modeling and prototype railroading as well as a large variety of family-oriented adventures within easy reach in the two cities.

[Registration](#) is now open!

[Our hotel](#) offers free shuttle-service within a five-mile radius of the hotel, and that incorporates AMTRAK, the Eppley Airfield, Omaha's Old Market, as well as Henry Doorly Zoo, and Lauritzen Gardens – both of which have strong railroad attractions. In Council Bluffs, the Union Pacific Museum and the General Dodge House are within the radius served by the shuttle.

[Organized activities](#) are still in the planning stages, but we are actively working on [bus tours to visit the attractions listed](#) above plus [prototype railroad activities](#) and sites of historic importance to railroading in the area. Clinics on modeling and rail history will be offered at the hotel, where the [modeling, switching and photo contests](#) will also be held.

The area is also [home to a number of well-developed model railroads](#) which will be open for tours and a limited number of operating sessions. Speaking of models, [several brick and mortar hobby shops](#) are thriving in the area for your shopping convenience. Layouts and dealers will be on hand at the Ralston, Nebraska Arena during the [Nebraska-Iowa Railroaders annual train show and swap meet](#) to be held at the same time as our convention, and is within the metropolitan area, in easy driving distance.

[The banquet on Saturday night](#) by popular request will feature the Hilton Garden's famous "Whisky Steak" – and will also feature contest winners and an after-dinner speaker on the theme of railroading in the Omaha-Council Bluffs area.

More Details will follow soon.

The 2016 Convention is being held at the [Hilton Garden Inn](#) located at:
2702 Mid America Drive,
Council Bluffs,
IA 51501.

For those that wish to make reservations by phone, their number is 712-309-9000.

We have reserved a block of rooms between 6/2 and 6/5 (through 5/3/2016) that include both Kings (either one King Size bed or two Queen Size beds) for \$115/night or Jr. Suites at \$135/night. Be sure to state that you are with the MCoR Convention to get the convention rate.

Hotel features:

- On premises Garden Grill serving breakfast and dinner with evening cocktail service.
- Bar is open till midnight.
- Connected to the Horseshoe Casino with three other restaurants and bar.
- Complimentary parking
- Complimentary shuttle service to surrounding area within 5-mile radius of hotel. This includes:
 - o Omaha's Old Market,
 - o Amtrak and Durham Western Heritage Museum
 - o Eppley Airfield
 - o Henry Doorly Zoo
 - o Lauritzen Gardens
 - o Council Bluffs UP Museum
 - o General Dodge House



The Road to Omaha, 2016—Registration Form

Council Bluffs, IA

June 2-5, 2016

Sponsored by the Western Heritage Division

Hilton Garden Inn

2702 Mid America Drive,

Council Bluffs,

IA 51501.

Rooms \$115/night, Jr. Suites \$135/night

(Be sure to ask for the MCoR convention rate)

Note: You **MUST** be a member of the National Model Railroad Association to attend. Membership will be checked.

Spouses or significant others need not be NMRA members to attend the Saturday Banquet or non-rail events— payment for the banquet must still be received.

A 6 month "RailPass" membership is available to new members for \$10. See below.

If you have ever received a "RailPass" membership to attend a previous convention, you cannot use that again— you must sign up for a full NMRA membership to attend.

Name: _____ NMRA # (required) _____

Spouse/Guest Name: _____ NMRA membership expiration date _____

Address: _____

City: _____ State: _____ Zip/Postal Code: _____

Phone: _____ Email: _____

Is this your first MCoR convention?

Event	Pricing (Each)	Quantity	Subtotal
Convention	\$65		
Saturday Evening Banquet (Keynote by Bob Krieger, business manager of UPHS)	\$45		
Friday Morning Union Pacific Heritage Fleet Car Shops Prototype Tour (limited to first 40 responders)	\$10		
Saturday Morning Harriman Dispatch Center Prototype Tour (limited to first 60 responders)	\$10		
Saturday/Sunday NE-IA Railroad Show held at the Ralston Arena	\$6		
6 month Rail Pass	\$10		
		Total	

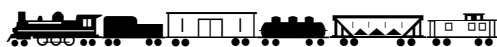
Make Checks Payable to the Western Heritage Division

Send Payment and Questions to

2016 MCoR Convention

511 S 93rd Ave

Omaha, NE 68114



...BREAKING NEWS...

about

YOUR

2016 NMRA Lone Star Regional Convention

Early Registration ends April 15th!

*****Don't Miss Out*****



We are rapidly approaching one of the most **exciting NMRA Regional Conventions ever**, the NMRA "Daylight Express 2016".

Many have compared it to a mini-NMRA-National- Convention and it's all **coming YOUR WAY** in the Dallas/Fort Worth area on **June 22nd to the 25th**.

YOU do not want to miss this!

Your **NMRA Convention Host Committee** has tons of fun stuff lined up lined up for **YOU to see and do...**

Workshops galore! from beginner level to advanced, on almost every topic in model railroading;

An array of **Special Tours**, including some *never done before*;

Open house layout tours of the most spectacular model railroads in DFW, many only open for this event;

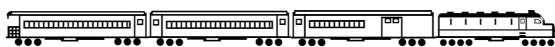
A **Contest Room** packed full of the **finest models in the country**, all on display for you see and learn from;

A wide variety of "non-rail events" for our ladies;

The Huge "Super Raffle", with several chances of winning **over \$1500.00** in vacation packages on several steam railroads in Colorado and Texas;

Spectacular Saturday Night Banquet; with special guest speaker **Charlie Getz**, the President of NMRA;

And the list goes on!



BASSWOOD KITS

All Basswood...No Resin or Plaster

A Complete 3D Brick Building System
Kits, Detail Parts & More

OUR UNIQUE BRICK DESIGNS ARE FROM ACTUAL PHOTOGRAPHS OF REAL BRICK & STONE
LASER CUT INTO QUALITY BASSWOOD KITS



Bonded Warehouse & Storage Backgr
HO Scale \$39.99 - S Scale \$79.99



Robertson's Paper Company - Available in HO Scale \$99.99



Single Story Starter Structure - HO Scale \$59.99



Hansen Machine & Tool Background Flat
HO Scale \$39.99



McCampbell's Storage Background Flat - HO Scale \$79.99



Union Brewery
HO Scale \$69.99



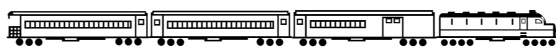
3 Story Storefront Starter Kit - Available in HO, S & N Scales
HO Scale \$59.99 - S Scale \$89.99 - N Scale \$39.99

Ourray Ice House



*Photos provided
by Steve McKee*

*Modeling by
Don Vancil*







For the enjoyment and edification of model railroad operators

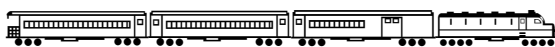
Prairie Rail 2016 delights crews throughout Kansas City and surrounding communities

Over 160 participants enjoy dozens of model railroad operating layouts and fellowship during late February weekend

Progressive Rail debuted with three sessions during the recent event. Operations began Friday afternoon. Guests Olin Dirks, Allen DeBraal, Zach Fink, and Craig Schwabauer (pictured left to right) quickly figured out the paperwork and made certain that freight moved timely to and from Northfield via the UP, CPR, and PGR turns as well as in and out of Airlake Industrial Park.



On Saturday morning, Randall Wilson, Paul De Luca, Rene LaVoise, and Bruce Petraca capably filled the jobs. The crew made quick work of the trains and switching duties that morning, allowing nearly an hour for leisure conversation and sharing stories before returning to the Doubletree, lunching, and traveling to their afternoon sessions prior to the banquet held that evening at the hotel.



Saturday afternoon crew wraps up ops sessions



Nancy and Scott Stearns worked well Saturday at Airlake Terminal Railway.

Despite the disappointment of not being able to see friends and attend the banquet Saturday evening (I made it as far as the lobby and was greeted warmly by Jeff Otto before the emergency call came) my hopes of making it through the three operating sessions uninterrupted were fulfilled, which was the main objective. Thanks to Jeff Needham for offering to serve as a co-host if needed.

Naturally, the gremlins were up to their

tricks at first, as the entire command station shut down—and not just once during the first 10 minutes of the first session.

That's never happened before in 11 years of using the Digitrax system, but of course it took place to start the day. My thanks to the crew for their patience. After that, it worked like it has throughout its history. Go figure.

It was an honor and very enjoyable to be included in this year's Prairie Rail event as a host. I met many fine people and excellent model train operators—even more talented than I could have or predicted. I look forward to another opportunity to participate in 2018.

Also, thanks to the PR committee that worked long and hard to make the event a success. I appreciate all your efforts.



PGR #63, a custom GP9 effort by SD friends Tim Smith and Eric Carlson, awaited duty last month on the Faribault turn. The unit will see more action this spring.



Steve Marquess and Campbell had Northfield and the transfer jobs, respectively, under control as the afternoon session wound down for the third and final one of the weekend on PGR.

Virginia and Truckee to replace Stockton and Copperopolis on Don Ball's 1895 empire

Research material, enticing mountain railroading theme entice Master Model Railroader to change and backdate his layout 20 years

article and photos by the author

My Stockton & Copperopolis Railroad has now been under construction for about nine years. Although I still like the concept and operations, I've been thinking it's a little too modern for my current tastes. The era which really is a golden era is the 1870s when railroads were being built everywhere and equipment was painted in bright colors and actually kept clean. A long time interest in the Virginia & Truckee has influenced my modeling up to now so I thought "why not model the V&T in its heyday, the 1870s?"

In the 1870s, the V&T was booming. There were 24 regularly-scheduled trains, many of which ran with second and third sections, most of which were double-headers. There would be plenty of operations. Much of the original operations information could easily be consulted to get train consists, etc. Mountain railroading would terrific as well.

It would not be hard to do. Many of my locomotives are V&T prototypes from that era and would just need some re-lettering. Many of my cars would fit right in to the new scheme, and kits are readily available for most of the V&T's equipment. The hardest part, passenger cars, I already have and they would only require a repaint/reletter. I've even started building up two 2-6-0s of V&T prototype to supplement my current roster. Of course, many of the structures could be repurposed with new signs.

The big thing, of course, is how to dismantle the current railroad and construct the new V&T up and running as quickly as possible. A sectional approach would probably be the best. I have worked up a new track plan and can start building up the key areas while still operating the S&C.

(continued on page 4)



Local Minnesota economic development authority and PGR “seal the deal”—obtain state funding to build new runaround track

Following a year of controversy, constant urging, and complaints (some bordering on whining) by Lakeville crews, Progressive Rail obtained funding for a runaround track along the mainline at the north end of the industrial park. The runaround, designed to accommodate from eight to nine cars, lies parallel to the Boise Cascade spur near the profitable industrial park.



PGR Number 36 shoves a cut of outbound cement cars onto the newly constructed runaround track

The superintendent described the addition as being consistent with the prototype—a passing siding parallel to the main, an improvement that “should enhance the efficiency of both the Lakeville and Northfield turn crews—if utilized in the manner intended. Time and crews will determine whether it proves to be the case.”

Two professional consultants (both Dougs) sent emails to the editor (published last fall) which also helped influence the addition, funded and installed last month.



V & T locomotive under construction

(continued from page 3)

For those of you interested enough to read more about the Don's plans for the Virginia and Truckee to replace the Stockton and Copperopolis operating railroad in Blue Springs and bought into Don Ball actually changing themes, please realize that you've been made the subject of an

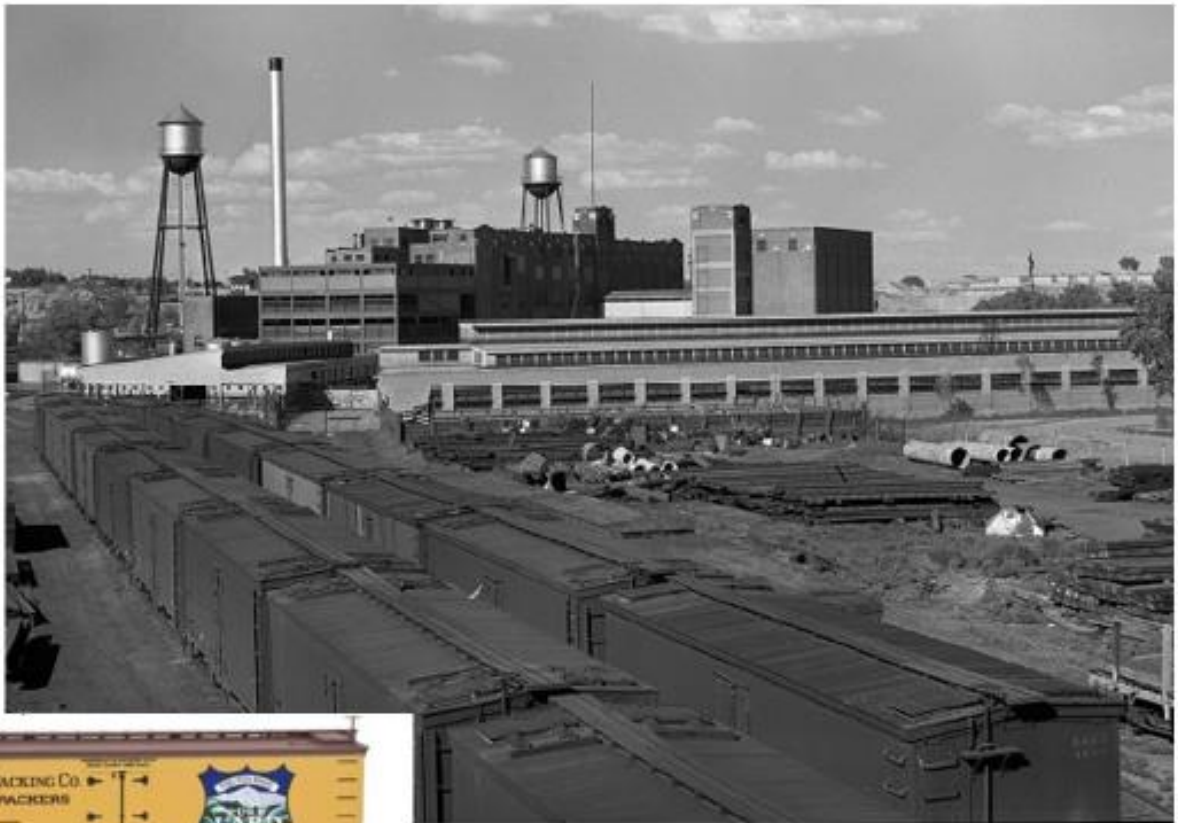
April Fool's joke!

March meeting

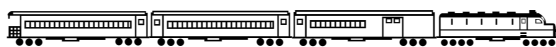


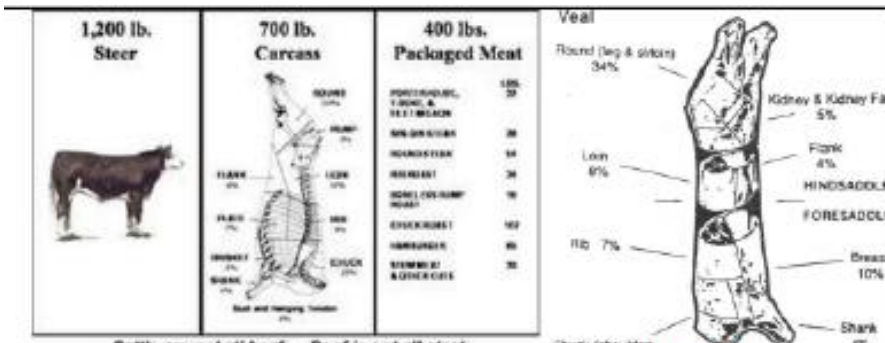


Modeling a Meat Packing Plant

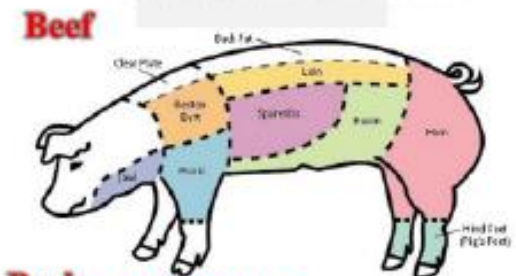
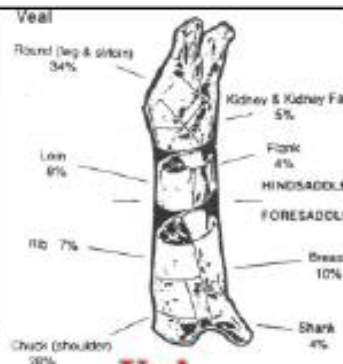


By Paul Evans
March 22, 2016

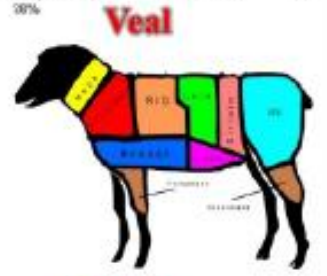




Cattle are not all beef... Beef is not all steak



Pork ... wholesale cuts



Lamb

1891... Emmett Nuckolls moves his meat packing plant from Stray Horse Canyon just outside Leadville CO to Pueblo Union Stockyards



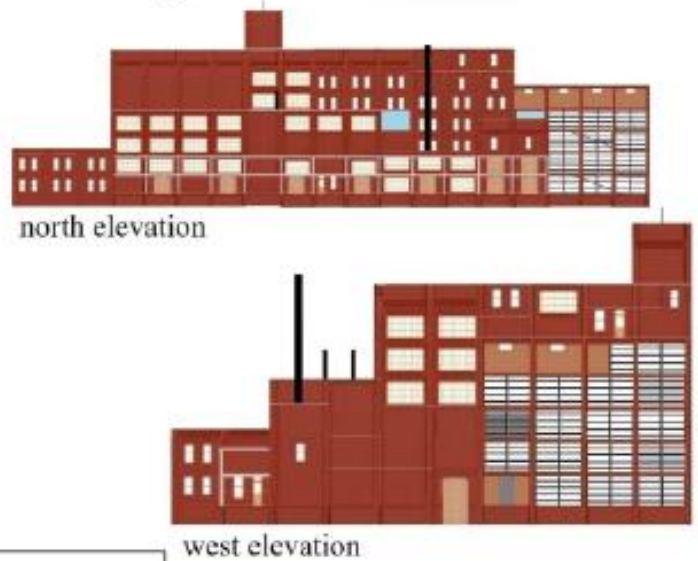
1910... Emmett 65 dies from complications to a broken hip suffered at the plant while separating penned cattle, his three sons continue to run the business. *Pikes Peak* and *Open Kettle* brands of lard and *Peerless Hams* and *Bacon*s, all products of the Nuckolls plant have won fame in households all over the West



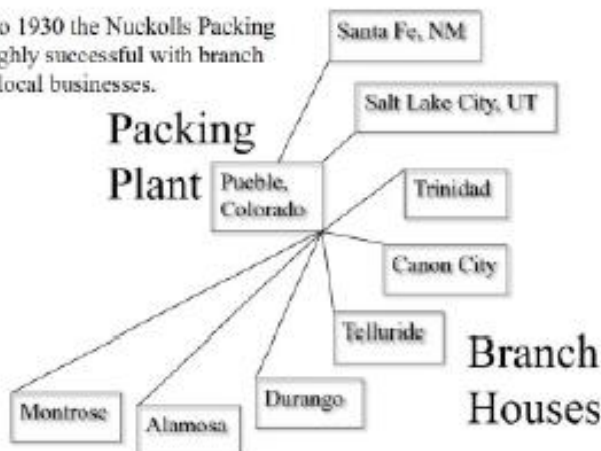
1915... The existing 158,000-square-foot plant constructed, on 7 acres at 303 S. Santa Fe Avenue for a cost of about \$300,000. "The products of this big plant finds ready markets in Texas, New Mexico, Arizona, Colorado, Kansas and in almost every other state west of the Missouri River.



Nuckolls Pueblo Plant in Design Preservation Modules

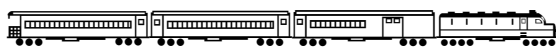


1920... From 1920 to 1930 the Nuckolls Packing Plant was highly successful with branch houses plus local businesses.



Note: Most of the Colorado butcher shops received "Dressed Beef" from the Armour and Swift companies in barrels. The towns of Colorado Springs, Leadville and Grand Junction all had Armour and Swift branch houses.

These branch houses received hanging sides in reefers, then cut and repackaged the beef into barrels that were shipped to the local shops along the line.



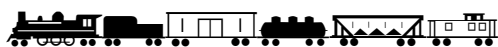
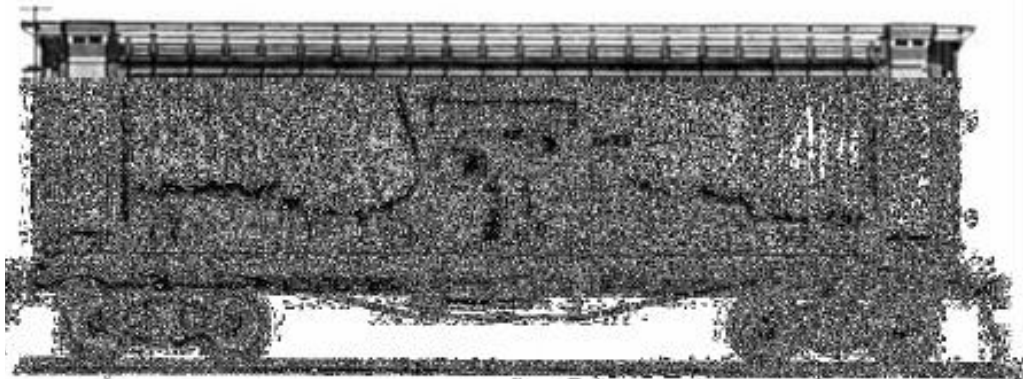
Some branch houses are large and very busy, like this one.



The principle "slaughter houses" are those of Denver, Omaha, Chicago and Kansas City.



In Pueblo, CO, the **Nuckolls Meat Packing Co.**, also did their slaughter and packaging into barrels there and distributed locally along the Front Range.



John Marshall Nuckolls ran major cattle raising operations along the Grand (CO) and White River Valleys in western Colorado that shipped most of their cattle to Pueblo.



1921... Deadly Arkansas River flood, damages plant and much of Pueblo near the river, Pueblo once the second largest city in Colorado never fully recovers.



Source: Denver Public Library Archives

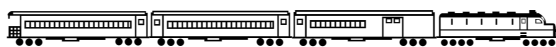
1922... *Packers' Encyclopedia Blue Book of the American Meat Packing and Allied Industries:*

Nuckolls Packing Company

Railroad: D&RG.

President G. H. Nuckolls; Vice-President Ezra Nuckolls.

- * Employees 190
- * Cattle 750 per week
- * Hogs 3,000 ditto
- * Sheep 500 ditto
- * Sausage: Fresh and smoked
- * By-Products: Dried blood, tankage and hog feed
- * USDA inspection
- * Refrigeration: 150, 100 & 25-ton
- * 25 tons ice daily [filling 5 reefers ice bunkers]
- * Boiler capacity, 700 H. P.



* Trade Marks:

Hams and bacon: *Peerless*

Lard: *Open Kettle* and *Pikes Peak*

Compound: *Little Chief*.



Nuckolls Branch Houses:

Salt Lake City, Utah; Trinidad, Durango, Montrose, Telluride [shown], Colorado Springs [moved from Canon City], and Denver, CO, and Santa Fe, NM. Also exports.



1922...

Nuckolls Packing Co. butchering capacity & output:

	Cattle	Calves	Hogs	Lambs
per week	750	180	3,000	50
live wt. lbs.	1,844	221	227	87
dressed wt. lbs.	515	129	170	42
head/stock car	17	58	114	146
stock cars/week	44	3	26	3
reefers/week	9	1	3	2
Total stock cars/week		77	per day	17
Dressed meat reefers/week		15	per day	3



1922...

Nuckolls Packing Co. by-products output: per week

	Cattle	Calves	Hogs	Lambs	Total/week
Fats	1	0.05	3.4*	0.1	1 tank car**
Hides	1	0.06	NA	0.05	1 old boxcar
Paunch	0.5	0.04	NA	0.04	1 old gondola
Tankage	0.5	0.03	0.54	0.03	1 old boxcar
Misc.	0.3	0.02	0.36	0.02	1 meat reefer

*lard cans in reefers **25% edible tallow

based on the above info & the US Census of Manufacturing

inedible tallow for soap or lube	3 tank cars/mo.
edible tallow for oleo or bakery	1 tank car/mo.
lard to bakery & branch houses	3.4 reefers/wk.
hides to tannery for saddles	1 old box/wk.
paunch for feed or fertilizer	1 old gon/wk.
tankage for hog feed	1 old box/wk.
misc. meats to branch houses	1 reefer/wk.



Nuckolls Packing Co. other monthly inputs:

salt or brine	2 boxcars or tank cars
cardboard boxes	2 boxcars
cans	2 boxcars
stock bedding	2 boxcars or gons
coal [later fuel oil]	2 gons [or tank cars]
stock feed	1 boxcar
barrels	1/2 boxcar
cleaner	1/2 tank or boxcar
parts & machinery	1/2 flat or boxcar
firewood for smoker	1/2 gon or boxcar

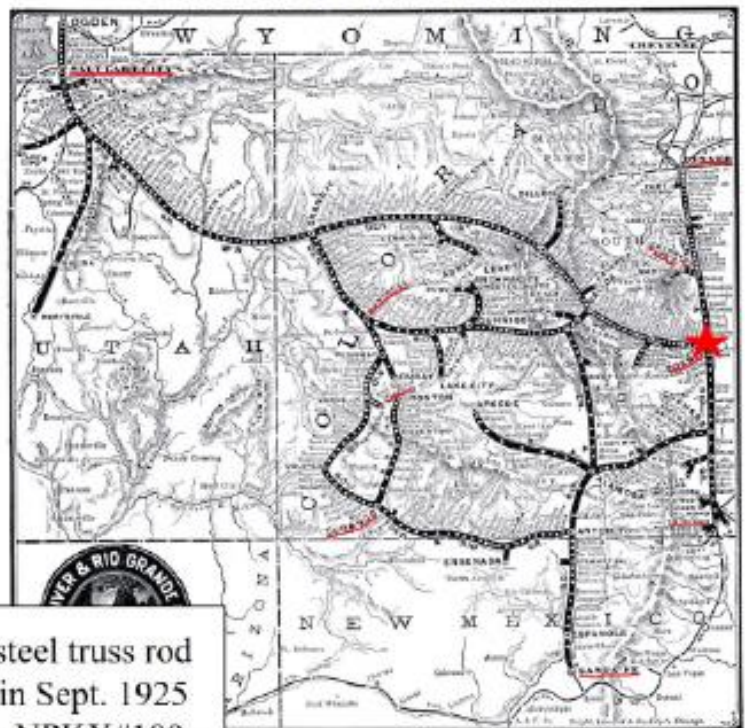
Total: 12 cars, about 1 every other day

source: The Santa Fe Railway Historical & Modeling Society ...reefer and stock car operations, 1953 by J. Stephen Sandifer

Based on late 1920s populations estimated Nuckoll's branch house business to be:

Denver	5 reefers per week
Pueblo, local delivery	3 reefers per week
Salt Lake City	3 reefers per week
Colorado Springs	1 reefer per week
Trinidad	1 reefer per week
Montrose	1 reefer per week
Durango 3' gauge	1 reefer per week
Telluride 3' gauge	1 reefer per week
Santa Fe NM 3' gauge	1 reefer per week

Nuckoll's branch houses



1925... 36' Wood Sheathed Ice Reefer with steel truss rod under frame built by Pressed Steel Car Co. in Sept. 1925 for the NACC (North American Car Corp.); NPKX#100-169 leased to Nuckolls Packing Co. In September 1925, Nuckolls "Pikes Peak" brand lard on its one side and "Mission" brand ham and bacon on the other side. Atlas offered HO NPKX#100&101 but they are very hard to find.



1935... NPKX reefers repainted yellow over red per ICC rules banning billboard cars, Atlas offered PKX#111 & 115 from *Billboard Refrigerator Cars by Hendrickson and Kaminski*

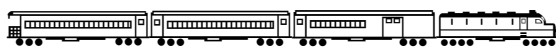


But 1921 flood photos show American Refrigerator Transit reefers fill the MP and D&RGW yards; HO models offered by Atlas, Intermountain, Roundhouse & Walthers and I can afford these!



1941 Principal Freight Trains - D&RGW and Connections
Train No. 68 This train, leaving Pueblo at 1:15 p.m. and arriving in Denver at 7:00 p.m., handles business into Pueblo on Missouri Pacific train No. 61.

It connects with trains handling perishable business from San Luis Valley, and also makes connection with **D&RGW No. 75** at Denver to move **Nuckolls Packing Company** meat for Salt Lake one day each week. Via D&RGW lines



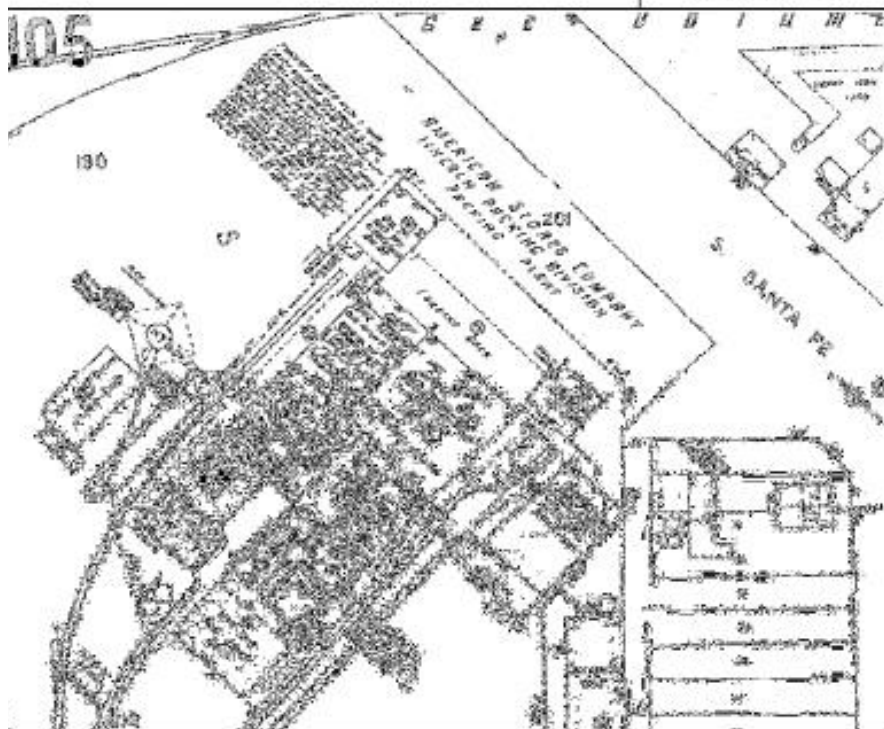
Train No. 75 Due out of Denver 8:00 p.m. arrives in Bond at 4:45 a.m. and connects with CRI&P No. 91 and CB&Q No. 61. This train also has a connection one day a week with **No. 68** from Pueblo, to handle meat from **Nuckolls Packing Company for Salt Lake City**. In addition to these connections, this train handles all merchandise and other business loaded at Denver for the Western Slope. Via D&SL line *drgw.org*



1942... Philadelphia based American Stores, one of the nation's largest grocery and pharmacy chains, had problems during WW2 in securing an adequate supply of superior meat products led to the purchase of Nuckolls Packing Co as part of its Lincoln Packing Division, and promotion of its Lancaster Brand as a standard of quality.

(A popular misconception in the east is that Lancaster Brand meat is associated with Lancaster County in Pennsylvania. Actually, the packing plant acquired in 1942 was in Lincoln, Lancaster County, Nebraska.)

Sanborn's map lists the Pueblo plant's capacity at 150 employees butchering 30 head of cattle and 200 lambs per hour with cold storage capacity of 600 beefs & 5,000 lambs at this time.



Rapido's GARX Reefer car numbers 1912, 1916, 1921 & 1938 lettered for American Stores Company built in 1940 were included in their first run.



These 37' wood reefer based on a design built between 1937 and 1941 by General American Transportation (GARX). Although built with a wooden sheathed body and roof that made look like a car from an earlier era. But these GARX cars were modern for their time. More than 940 cars were built to this configuration making it one of the most numerous meat reefer designs, and they lasted in service well into the early 1970's.



- 1961 American Stores Co. acquired California's Alpha Beta chain of supermarkets.
- 1967 IBP introduced boxed beef and pork, which were vacuum packed and in smaller portions. This new option replaced the traditional method of shipping dressed sides and the whole branch house system.
- 1970 American Stores, Lincoln Packing Division in Pueblo renamed Alpha Beta Packing Co.



- 1979 American Stores acquired by the Skaggs Companies, Inc., which adopted the American Stores Company name, but relocated its headquarters to Salt Lake City, Utah.
- 1980 Pueblo's meatpacking plant employed about 500 workers when its union went on strike. The plant is closed after six-weeks of the strike.



- 1983 American Stores owner Sam Skaggs later donates the site to Colorado State University-Pueblo Foundation for resale to a group who briefly reopens the plant at a reduced level of operation.
- 1989 Plant falls into fore-closure and is sold to Pueblo businessmen Frank Glenn and Bud Whittmore, who initially offer refrigerated storage and warehouse space at the site. Complex renamed Santa Fe Warehouse and Storage.
- 1994 The partners launch ice-making company Arctic Ice at the site.
- 2006 Fort Collins developer purchases site but its plans to convert property into retail space and condos never leaves drawing board.

- 2011 Site falls into foreclosure and is put up for sale.
- 2012 Fire damages building's interior. A week prior, site was bought for future redevelopment by Pueblo businessman Doug Hess, said efforts to secure the property were underway.
- 2015 Property bought by 303 Industries. The company announces plans to invest more than \$30 million to redevelop the site into a light manufacturing park for rail engineering, rail car repair and rail parts manufacturing, to include retail-and-restaurant space near the Historic Arkansas Riverwalk of Pueblo.

Source: Google and Pueblo Chieftain website



- 1979 American Stores acquired by the Skaggs Companies, Inc., which adopted the American Stores Company name, but relocated its headquarters to Salt Lake City, Utah.
- 1980 Pueblo's meatpacking plant employed about 500 workers when its union went on strike. The plant is closed after six-weeks of the strike.



1983 American Stores owner Sam Skaggs later donates the site to Colorado State University-Pueblo Foundation for resale to a group who briefly reopens the plant at a reduced level of operation.

1989 Plant falls into fore-closure and is sold to Pueblo businessmen Frank Glenn and Bud Whittmore, who initially offer refrigerated storage and warehouse space at the site. Complex renamed Santa Fe Warehouse and Storage.

1994 The partners launch ice-making company Arctic Ice at the site.

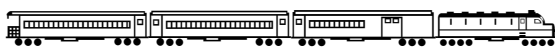
2006 Fort Collins developer purchases site but its plans to convert property into retail space and condos never leaves drawing board.

2011 Site falls into foreclosure and is put up for sale.

2012 Fire damages building's interior. A week prior, site was bought for future redevelopment by Pueblo businessman Doug Hess, said efforts to secure the property were underway.

2015 Property bought by 303 Industries. The company announces plans to invest more than \$30 million to redevelop the site into a light manufacturing park for rail engineering, rail car repair and rail parts manufacturing, to include retail-and-restaurant space near the Historic Arkansas Riverwalk of Pueblo.

Source: Google and Pueblo Chieftain website





BULLETIN

March / April 2016

Highball to Indy 2016: Registration and Non-Rail



It's fairly safe to say that everyone likes to save money. Let me offer you a way to save at least \$20.

Early registration rates for Highball to Indy 2016 have been temporarily extended beyond February 1, 2016. You may still register at the rates listed. This means you may continue to use the Basic Registration rate of \$130 and the Companion Registration Rate of \$55, as well as the other pre-February 2, 2016 rates. Don't dawdle though, complete your registration soon.

There will be a wide selection of non-rail clinics and we are excited to get going! These clinics and workshops will be presented in the Westin convention hotel. There are wonderful speakers ready to share with us what life is like married to a model railroader; Confessions of an Organized Woman; cat rescue and foster care. There will be sessions for understanding and using social media. Interested in looking younger? Older? A makeup specialist will show us how. Do you like to journal? Let's discuss. There will also be a video and discussion on creativity and the mind. How do people arrive at "aha" moments? Come and see.

We have craft workshops: decorating slate tiles, making felt Christmas ornaments, recycled Christmas cards, coffee filter craft, Project Linus, and Big Hats/Little Hearts. A BINGO night is planned with prizes for the winners. In the Welcoming Room, there will be COLORING PAGES, jigsaw puzzles, a bookshelf, the opportunity to sit and visit with new or old friends. We'd like to find someone who can provide expert tips on how to make coloring creations pop with shading and color blending, and other clinicians interested in sharing their expertise. If you are willing to help, please email penny.studley@gmail.com as soon as possible.

Visit www.nmra2016.org for updates.

Highball to Indy.

A few words from the President



Comments on Mid-Year

I have literally just returned from our annual Mid-Year Board of Director's meeting this year held in Atlanta Georgia. Why Atlanta? Actually to save money as funny as that may sound. It turns out that Atlanta is near many Directors, officers and staff. CAO Jenny Hendricks is an easy drive away; two Directors live in town with another a few hours drive away and our Secretary is also based in

Atlanta. Atlanta has a major airport, one of the busiest in the US, and generally, fares are reasonable. We met at a well-priced Airport hotel that included breakfast and dinner. So add generally mild winter weather and you have a winning combination. And the SER Piedmont Division was fabulous, with Division members attending and arranging for a Saturday no-host dinner and visit to a layout of one of our newest MMRs after our business was done.

This meeting was fairly non-controversial with many items of business but few motions and few issues of major concern. Atlantic Director Kathy Millatt will report in the *NMRA Magazine* on the highlights of the meeting and its minutes will be available on the web. So check those out.

This was the last full meeting for Western Director Jack Hamilton who cannot run for another term due to term limits. We wished him well and thanked him for his numerous contributions over the years he served. Jack redefined the post of "Lead Director", infusing that job with energy and working on many projects including the Long Range Plan, "NMRA 2019". Most recently, he headed our Recruitment and Retention committee ("R&R").

But you know the highlight of this and every other meeting? The dedication of a room full of folks and the hundreds behind them, to the NMRA. Some isolated examples. IT manager Ben Sevier not only dedicates hundreds of hours to our web and IT services but spent days prior to the meeting in nearby Soddy Daisy upgrading our member data base to modernize it. Our VP, Special Projects Gerry Leone, who produced and arranged for our use of a commercial video, some 58 minutes long, on attending a NMRA convention. He and Chuck Diljak produce the free eBulletin every other month. Our Department managers who keep the machinery humming smoothly and invest countless hours doing so. Secretary John Stevens who not only keeps the minutes but helps with the Boy Scout program, the surplus MDC car shells effort and even hosting a Delta Air Museum tour for Atlanta meeting attendees. CFO Frank Koch who not only keeps us solvent but also spends a lot of time assisting headquarters on a myriad of issues. Each Director who contributes through projects and regional convention attendance. Our RAC Director, Steve August who has reinvigorated the Regional Advisory Council ("RAC") made up of region presidents, presenting almost all region's reports for mid-year. Our Pacific and Atlantic directors who spend 15 plus hours on flights to and from the US just to work in a stuffy room to improve the organization. Kathy even was nice enough to transport some UK kits for me otherwise not easily attained in the US. Our lead Director Pete Magoun who works closely with me to address problems and issues, 24/7. And our wonderful CAO Jenny Hendricks whose dedication to the NMRA far exceeds her pay. She oversees an excellent staff working hard to keep us going.

This list is far from inclusive! Indeed, I could write many columns about the solid people who keep us strong on every level. They and you ARE the NMRA. I am proud to be a part of such a fabulous team. The next time you hear someone grouse about the NMRA and what it has or has not done for him or her or for the hobby, remember the mid-year. Remember all the folks who came from around the world just to spend days in a meeting room so you would not have to. Who sacrifice their hobby time to improve yours.



SWITCH LIST April 2016

*new since last issue

The Switch List contains all known Mid-Continent Region, NMRA, train shows and Division meetings. It also lists all known club shows and swap meets in the Mid-Continent Region (IA, IL, MO, AR, NE, KS, and OK). To list your event information please Email: L-seibel@comcast.net, or Mail Information: Louis Seibel, 1069 N Logan, Olathe, KS 66061. To subscribe, or unsubscribe, to The Switch List send an email to the above link. Look for us on the MCoR web site: www.mcor-nmra.org **Please put me in your newsletter.**

DIVISION MEETINGS

Chisholm Trail Division First Tuesday of the month Evening Meeting at the Olivet Baptist Church
3440 West 13th St. No. • Wichita, KS 67203-4560 (13th Street North & High Street)
Begin gathering-6:45pm NMRA - meeting 7:00pm - 9:00pm
Information Alan A. Aagaard email
alan.a.aagaard@gmail.com

COWBOY LINE DIVISION (NORFOLK, NE) meets 3rd Thursday each month, 7:00 P.M. at HyVee East upstairs meeting room. Corner of 1st Street and Norfolk, Ave. Info: Dennis M. Brandt Phone 402-992-2415 email
dennisbrandt44@gmail.com

EASTERN IOWA DIVISION Tom Persoon is the Superintendent e-mail: persoont06@msn.com
For other division activities check out our website monthly at: <https://sites.google.com/site/easterniowadivision/> or the division's Facebook Page at: Eastern Iowa Division

GATEWAY DIVISION (ST. LOUIS, MO) meets 3rd Monday each month, 7:00 P.M. Odd numbered months: Trinity Lutheran Church, 14088 Clayton Road at Woods Mill Rd (Hwy 141), Ballwin, MO; Even numbered months: VFW Hall, O'Fallon, IL <http://www.gatewaynmra.org/division.htm>

INDIAN NATIONS DIVISION Unless otherwise specified, all Indian Nations NMRA meets are held at the new Hardesty Library, 8316 E. 93rd St., just east of Memorial Rd. in Tulsa, OK. The library opens at 9:00 am and the meetings start at 9:30 am. Web page: www.tulsanmra.org Superintendent - Dave Salamon (918)272-5512 or drs_rr@yahoo.com

KANSAS CENTRAL DIVISION Every first Saturday of a month meeting starts at 1pm. For the full schedule check the MCoR website or email: wcastegnar035@gmail.com.

KATE SHELLEY DIVISION meets the 4th Thursday of every month except Nov. which we meet the 3rd. Dec. we have no meetings. Business meeting starts at 6 PM and at 7 PM we have a get together, anything railroad goes. The Library is at 515 Douglas Ave. Contact KSD thru the NMRA web site.

OK HEARTLAND DIVISION, NMRA meets in the even months in the Oklahoma City area. All who are interested in Model railroading are welcome. Info: www.okcnmra.org

PLATTE VALLEY DIV. (HASTINGS, GRAND ISLAND, and KEARNEY, NE) Meets quarterly in members' homes on a rotating basis or at sites of interest. New members are always welcome. Info: Todd L. Petersen, Div. Dir. 308-832-2200 or todd@gtmc.net

TURKEY CREEK DIVISION, NMRA, Turkey Creek Division Meeting Every Fourth Tuesday, at 7:00 pm. at Hocker Grove Middle School 10400 Johnson, Shawnee, KS 66203-2895 Check the Division Timetable <http://www.tc-nmra.org/TC-Calendar.html> for current. Info: Louis Seibel, 913-393-3495 or 913-927-6850 L-seibel@comcast.net

WESTERN HERITAGE DIVISION (OMAHA, NE / COUNCIL BLUFFS, IA) meets second Saturday (except June and December) at noon in the Sump Library at 2nd & Washington Streets in Papillion (across from Runza). Visit www.whdnmra.info for more info and a map. The new web site is found at <http://www.whd.mcor-nmra.org>

WESTERN KANSAS DIVISION (GARDEN CITY, KS) Meets every Tuesday evening from 6:30 P.M. to 9:00 P.M. at 4091/2 N. Main St. (second floor above "Stage" department store, rear entrance from parking lot) 6 layouts on display (1-O27, 2-HO, 3-N) Operating sessions available Info: Robert Simmons, Division Director 620-521-3591 cell or 620-272-0444 Home e-mail: trainman55@hotmail.com ; Facebook page "Western Kansas Division" also Western Kansas Division website: <http://www.wkd-nmra.org>

Monthly News in a Glance NRHS

Friday, April 8 – Topeka Chapter, Great Overland Station, 701 N. Kansas Ave., 7:00. Exchange Program: Wichita Chapter NRHS

Friday, April 15 – Wichita Chapter, Gloria Dei Lutheran Church, 1101 N. River Blvd, 7:00. Program: "ATT & NW Railroad" by Mike Beem and Mike Hawkins. Informal dinner, Riverside Café, 739 W. 13th, 5:30. Information: J. Harvey Koehn, jhkoehn@prodigy.net

Friday, April 22 – Kansas City Chapter, Union Station, Town Square Room, 7:00. Information: John DeRoo, jderoo@planetkc.com

Saturday, April 30 – Quad Chapter Meeting, 9:30 – Registration at Great Plains Transportation Museum, 700 E. Douglas, Wichita; 11:00-11:30 – registration continues at Larkspur, 904 E. Douglas; 11:30 – lunch; 12:15 – Program and presentation; Street Railways of Wichita" and "Ark Valley Interurban Railway 2:00 – tour of Union Station; \$25/person, \$48/couple before April 4 -- \$28/person, \$55/couple after April 4. Information: J. Harvey Koen, info.gptm.us

DIVISIONS

Saturday, April 2 – Kansas Central, at member's home, 1:00. Information: wcastegnar035@gmail.com

Monday, April 4 – Chisholm Trail, Olivet Baptist Church, 3440 W. 13th St. N, Wichita, 7:00-9:00. Information: Alan A. Aagaard, alan.a.aagaard@gmail.com

Tuesday, April 26 – Turkey Creek, Hocker Grove Middle School, 10400 Johnson, Shawnee, 7:00. Information: Louis Seibel, L-seibel@comcast.net, or www.witc-nmra.org/TC-Calendar.html

Thursday, April 28 – Kate Shelley, 515 Douglas Ave.,



town???, 6:00.

Every Tuesday – Western Kansas, 409½ N. Main, Garden City, 6:30-9:00. Information: Robert Simmons, trainman55@hotmail.com

NARVRE

Monday, April 4 – Hutchinson, Airport Steak House, 8:30 a.m. Information: Ron Paul's, arkola@sbcglobal.net

Tuesday, April 5 – Arkansas City, Senior Citizen Center, 11:30 luncheon

Monday, April 11 – Abilene/Salina, Bayard's Café, 540 S. Broadway, Salina. Information: Tony Schmitt, asch9438@cox.net

Monday, April 11 – Parsons, The Chinese Chef, 900 N. 16th St., 11:30. Information: Jimmy W. Dodd's, jimmywdodds@gmail.com

Tuesday, April 12 – Kansas City, KS, Joe Amaya Center Community Center, 2700 Metropolitan Ave., 12:00. Information: Craig Hatch, hatch4591@gmail.com

Tuesday, April 12 – Wellington, Senior Center, 308 S. Washington, 12:00. Information: abdb@sutv.com

Tuesday, April 12 – Topeka, Coyote Canyon, 1251 SW Ashworth Pl, 9:30-11:30. Information: Larry Broadbent, lbroadbent@cox.net

Wednesday, April 13 – Marysville, Ricky's Café, Hanover, 11:30. Information: Dolores Krug, d30krug@yahoo.com

Monday, April 18 – Wichita, Best Western, 915 E. 53rd St. (I-35), 11:00-1:30. Information: Tony Schmitt, asch9438@cox.net

MODEL RAILROAD CLUBS

Friday, April 1 – Topeka N-Track Associates, at member's home, 7:00. Information: Bob Wright, 785-273-7835

Thursday, April 7 – Augusta Model Railroad Club, 6th & School St's., 7:30. Information: www.augustahorrorclub.org

Sunday, April 3 – Cherry Valley Model Railroad, Leatherock Hotel, 2nd floor, 420 N. Depot St., Cherryvale, 1:00. Information: John R. Dhooghe, john@cvmrc.com;
www.cvmrv.com

Thursday, April 7 – Manhattan Area Rail Joiners, Hy-Vee Supermarket, dining room, 601 3rd Pl., 7:00. Information: Robert Stewart, 785-537-8730

Saturday, April 9 – Kansas Pacific Model Railroad, Ellis Museum, 911 Washington, 10:00. Lunch at a restaurant afterward. Information: Tom Robinson, railway@gbta.net

Saturday, April 9 – Frankfort Subdivision, 416 W. 1st St., 10:00-3:00. Information: Joe Mc Atee, joem@bluevalley.net

Saturday, April 9 – Wichita Toy Train Club, 130 S. Laura, 10:00-5:00. \$5.00 admission; child up to 12 free

Sunday, April 10 – Wichita Toy Train Club, 1:00-5:00

Tuesday, April 12 – Lawrence Model Railroad, 111 E. 1400 Rd. Information: Steve Meseraul, print12345@aol.com

Sunday, April 17 – Heartland N-TRAK of Greater Kansas City, at member's home. Information: Dick Cooper, nscale@kc.rr.com

Sunday, April 17 – Cherry Valley Model Railroad

Monday, April 18 – Topeka Model Railroaders, Topeka/Shawnee Public Library, 1515 SW 10th, 7:00. Information: Tony Fox, tfox57@gmail.com

Thursday, April 21 – Kansas City Narrow Gauges, at member's home, 7:00. Information: Dean Windsor, On3@worldnet.att.net

Saturday, April 23 – Frankfort Subdivision

Saturday, April 23 – Wichita Toy Train Club

Sunday, April 24 – Wichita Toy Train Club

NEW

April 29th, 30th, and May 1st Pleasant Hill RAILROAD

DAYS Welcome to historic downtown Pleasant Hill's Railroad Days. Pleasant Hill is a quaint town that is located half way between Lee's Summit and Harrisonville, Missouri on Highway 7. Railroad Days is a celebration of our history as well as life in a small town. It will be held **April 29th, 30th and May 1st of 2016**. Not only is Rail Road Days back, but will have an emphasis on trains and the talents of our residents and bits of history. It will be a celebration to welcome spring. You are all invited to attend and become a part of our community if only for a short time. Pleasant Hill was established in the early 1830s. The train was an important center point to the town and remains a fixture today. Many of our buildings in our historic district are 150 years old. **The Pleasant Hill Historical Society Museum & Research Library** just went through a renovation and our rich heritage has resurfaced. We would like to thank them for all of the archive information and photos for the website. Plan to attend this event. It is free of charge and events are being planned. If you would like to be a vendor, visit our page for an application. Share your skills with us. There will be entertainment and above all, there will be trains. Whether you are here for one day or all three, come and see what a small town has to offer. phillrailroaddays.com/railroad-days

Every Sunday – Weekend N Ggineers, 16624 W. 126th St., Olathe, 1:00. Information: Robert Osborn <rozzie45@sbcglobal.net>

Every Sunday – Mid Kansas Model Railroaders, 1130 E. Kansas, McPherson, 2:00-5:00. Information: John Snell, Jsnell@cox.net

Every Monday – Garden City Model Trains, 408 N. Kansas, back entrance, 6:30. Information: Robert Simmons, trainman55@hotmail.com

Every Sunday – Weekend N'gineers, 16624 W. 126th St., Olathe, 1:00. Information: Ken Clark, hapheart@swbell.net

Every Sunday – Mid Kansas Model Railroaders, 1130 E. Kansas, McPherson, 2:00-5:00. Information: John Snell, Jsnell@cox.net

Every Monday – Garden City Model Train, 408 N. Main, back entrance, 6:30. Information: Robert Simmons, trainman55@hotmail.com

Every Tuesday – Ozarks Model Railroad Association, 424 W. Commercial St., Springfield, MO, 7:00pm. First Tuesday is the Member Meeting & Clinics. Second Tuesday is Layout Maintenance. Third Tuesday - Operation Night. Fourth Tuesday - Bring your own running. The OMRA has a 16' x 90' HO RR based on the Frisco's Central Division from Monett, MO to Paris, TX. Throughout the year members travel to other train shows, special activities and quarterly programs about trains. Information: Greg Sullivan, sullibud@gmail.com

Ever Tuesday evening the Mexico Train Works Model RR Club meets (except at major holidays) @ 7pm at 415-B West Jackson Street, Mexico MO. The website is www.mexicotrains.com and you can reach John Johnson, President @ info@mexicotrains.com or phone 573-581-8013

Every Wednesday Greater Kansas City Model Railroad Club, 6060 NW Waukomis Dr., Kansas City, MO, 7:00. Information: J. D. Spicher, jdspicher@aol.com or W. L. Ohnrell, wohnrell@sbcglobal.net

Every Other Every Wednesday – Kansas City Society of Model Engineers, Wed. 7:00-9:00 E-mail for meeting Information: Steven Boeck, sjboeck@att.net

Every Thursday – North East Kansas Model Railroaders, HO



gauge, 7:00. Information: Otto Wick, 913-367-7536, or Steve Schaefer, 913-367-6202

Every Saturday – Boothill Model Railroad, 1:00. Information: Robert Simmons, trainman55@hotmail.com

Every Saturday – Heartland N-Trak of Greater Kansas City, 131 S. Water, Liberty, MO, 11:00-3:00. Information: Dick Cooper, nscale05@gmail.com

Every Saturday-Sunday – North East Kansas Model Railroaders, 12" scale, 1440 N. 6th St., Atchison, Sat. 10:00-4:00, Sun. 12:00-4:00. Information: Otto Wick, 913-367-7536, or Steve Schaefer, 913-367-6202

Every 2nd & 4th Saturday-Sunday – Wichita Toy Train Club, 130 S. Laura, Sat. 10:00-5:00, Sun. 1:00-5:00. \$5.00 admission, child up to 12 free

First and Third Sunday - Cherry Valley Model Railroad Club, Leatherock Hotel Center, 420 North Depot Street, Cherryvale, KS 1:00 PM. Information contact John Dhooghe, john@cvmrc.com

Add our website - www.cvmrc.com - we post the dates of our Sunday meetings on our main page

Meetings GARDEN RAILROADS

Saturday, April 16 – Wichita Area Garden Railway Society, at member's layout. Information: Claudia Rollstin, claudia@gardenrailwaygizmos.com

Sunday, April 24 – Northeast Kansas, at member's layout. Information: Tedy Bellos, petedy@everestkc.net

Thursday, April 28 – Tulsa Garden Railroad Club, Freewill Baptist Church, 1190 N. Mingo Rd., Tulsa, 7:00. Information: info@tulsarailroadclub.org

HISTORICAL CLUBS

Friday, April 1 – First Friday, 1641 Pin Oak St., Rose Hill (8 mi. south of Andover or 6 mi. east of Derby on 63rd St.). Supper at Billy Sims BBQ, SW corner of Kellogg and Andover, 6:00. Information: John W. Cook, Cookieyman1@cox.net

Thursday, April 7 – Round Table, Paul & Jack's Tavern, 1808 Clay St., N. Kansas City, MO, 6:00. Program: "History of Santa Fe's Middle Division" – Robert Walz. Information: Robert Walz, rmwalz@sprintmail.com

Monday, April 11 – Amtrak Task Force, Emporia Main Street office, 12 E. 5th, Emporia, 4:00. Information: Rev. Andrew McHenry, pastorandrew70@yahoo.com

Wednesday, April 13 – Heart of the Heartlands, Webb Center, Carona, 7:00

Every Tuesday – Just a Group to watch trains, Spangles, K-15 & Pawnee, 10:00

SHOWS and CONVENTIONS 2016

Saturday, April 2 – Greater Tulsa Area Train Show, Bixby Community Center, 211 N. Cabanis Ave., Bixby, OK, 9:00-3:00. Adult \$3.00, child 12 & under free. Information: Bob Pope, 405-250-8449

Sunday, April 3rd Middle American Train Show KCI EXPO CENTER 11728 Ambassador Dr. Kansas City, Missouri, 64153 Open 9am - 2pm Admission \$5, 12/Under Free

Saturday, April 16, 2016 but at a different location The Ozarks Model Railroad Association hosts its 38th annual Spring Train Show 9am to 3pm, Saturday, April 16, 2016 but at a different location. The new site will be the Springfield Expo Center, 635 St. Louis St., Springfield, MO.

Attendance has grown dramatically in recent years with the emphasis on providing a number of opportunities for families with children.

Kids can earn an Official Whistle Blowers certificate by blowing the whistle on one of the operating layouts and others can become Official Switchman by completing a simple

switching challenge. Others can become Official Locomotive Engineers by operating the Simulator program.

Connie and Willie Misemer, Mt. Vernon, MO will be operating the Kiddie Train providing rides around for children of all ages during the show. Rides are subject to weather and conditions in running room in front of the Expo Center. Owners of pre-1970 trains can find out what they are worth or if they have a locomotive that isn't running Harvey Owens, Harvey's Train Service, Joplin, MO will diagnose the problem and provide an estimate of the cost to get it running again. More than 130 tables will display railroad equipment of all scales as well as memorabilia. Ten or more model railroads in O, HO and N scale plus a large portable garden railroad layout operated by the Ozarks Garden Railroad Society will be on display.

Food will be available and there will be many door prizes given away.

Admission is \$7 for adults. Children under 12 are free with a paying adult.

For other show details contact Greg Sullivan. Phone: (417) 664-4208. Email: sullibud@gmail.com. Visit the website at <http://omraspringfield.org> for more information about the OMRA and the Spring Train 2016 show.

April 16th & 17th, 2016, 22nd Annual Train Show, North Platte, Nebraska, sponsored by the Nebraska West-Central Division. D&N Event Center, 501 East Walker Road, North Platte, Nebraska. Hours 9-5 Saturday the 16th and 10-4 Sunday the 17th. One day admission \$4.00 per adult, \$1.00 for children under 12 (under 5 free with paid adult). Vendor Tables \$12.50 each till April 1st. After April 1st tables are \$20 each. For additional information or questions contact: Gene R. Tacey, P.O. Box 485, Sutherland, NE 69165 e-mail taceys@gpcom.net phone 308-386-2489

New

April 16 and 17. Train Show and Swap Meet in Sioux Falls April 16 and 17. Show will be at the fairgrounds which is a 3 minute drive off Interstate 29. This is our second show, the hope is to make it an annual event here in Sioux Falls. There will be operating layouts, vendors (including Spring Creek Hobbies), and a swap meet. Tables are available to interested firms and individuals at \$30. Points of contact: Jim Krekelberg 605-595-2634 Address 6305 W Westminster Drive, Sioux Falls, SD 57106; Terry Anderson 605-767-5423 e-mail topcop@iw.net; or www.dakotasoutheastern.org.

Thursday-Tuesday, April 21-26 – KATY Railroad Historic Society Convention, Holiday Inn Southwest, Route 66, 10709 Watson Rd, I-44 (exit 277B). Reserve room 314-821-6600, mention KRHS convention rate \$89. Rate guaranteed until April 7. Convention registration \$60 per person for all events; Sat. only \$45. Full information: www.katyrailroad.org

May 14, 2016 - National Train Day Learn about railroad history while you and your family enjoy our beautiful train garden, with its real caboose, working scale model trains, and miniature Old Overland Park. No pre-registration necessary, included with admission. **Cost:** FOTA free; Non-members \$3 admission, **Location:** Overland Park Arboretum & Botanical Gardens, 8909 W. 179th St., Overland Park, KS Contact Katharine Garrison 913-685-3604 katharine.garrison@opkansas.org, <http://www.opkansas.org/events/national-train-day/>

Thursday-Sunday, June 2-5 2016 Road to Omaha, 2016 Mid-Continent Regional Convention. Mid-Continent Convention, Hilton Garden Inn, I-29 & I-80, Council Bluffs, IA; shuttle service to Amtrak, Eppley Airfield, Omaha's Old Market, Henry Doorly Zoo, and Lauritzen Gardens – Omaha; Union Pacific Museum, General Dodge

