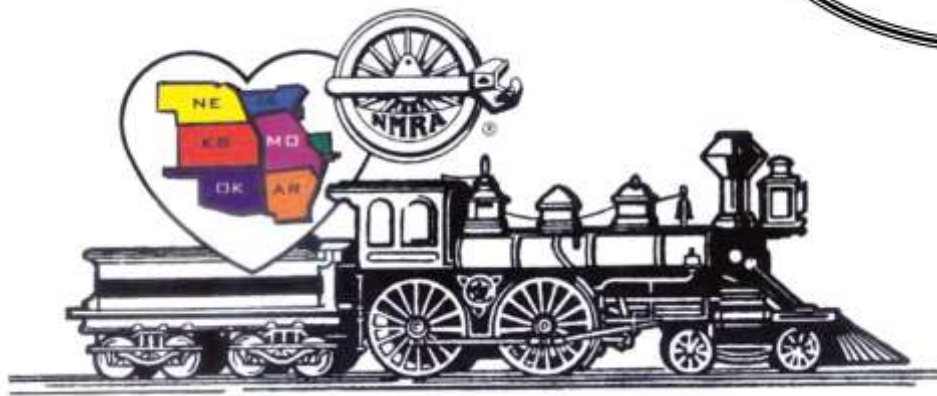


Lightning Slinger

Turkey Creek Division



VOL 33 NO. 11

MONTHLY PUBLICATION OF THE TURKEY CREEK DIVISION
OF THE MID-CENTRION REGION, NMRA

November 2019

"For all gauges and all ages"

Turkey Creek Division Meeting

November 26, 2018 at 7:00 pm
Lakeview Village Eastside Terrace
9000 Park ST
Lenexa, KS 66215

**Clinic by Dan Munson on his Yardmaster 101
Clinic**

Also Voting for Officers for 2020 year.

Superintendent Report:

Fellow Model Railroaders. Another wonderful meeting in October. It was great seeing a clinic on moving a model railroad and then actually seeing the moved railroad. For the Turkey Creek Division, I want to thank Shelley Levy for presenting and opening his model railroad for everyone to see.

Last month, I discussed work on the Lawrence Model Railroad Club's modular layout. That layout is back in storage until the Lawrence Train Show in February. With painting of the train room complete, I'm back working on my own model railroad. I have three projects going at the moment. Project 1: I'm finishing work on the model I started at the Make-and-Take meeting. Early on, I didn't like what I was doing. So, I put it down for a while. I returned now with better focus, and the building is improving. Project 2: I'm redoing a scene on my layout. The original ground foam has come loose, and I'm replacing it with static grass. It's a hillside scene, and not all hillsides in the Appalachians are trees. I'm varying the grass color based on slope location. With greener grass near the bottom and greenish brown grass near the top of the slope. Project 3: is the design of the layout addition. I built the original layout to be expanded. I now have the room ready, and I need a plan. I'm not a wing-it sort of guy.

The November meeting will feature a clinic by Dan Munson. Dan will be presenting his Yardmaster 101 clinic. November is also when we will vote on officers for the 2020 year. A slate of candidates was nominated at the October meeting and is posted in this issue of the Lightning Slinger. We allow additional nominees from the floor prior to the vote. If you don't want me to continue as Superintendent, you will have the opportunity to step forward and run for superintendent. That also goes for the clerk and paymaster position. Come to the meeting, vote for officers, and see a good clinic.

Clinics: The division has clinics arranged through the March 2020 meeting. Additionally, I have clinics for the May and June (modeling challenge) meeting. April and the rest of 2020 is still available for clinics. Please consider presenting or recommending someone for a clinic in 2020. Also, the Lightning Slinger can use articles or pictures. Please consider contributing.

Gregory Ohlmacher
Superintendent, Turkey Creek Division, NMRA

OFFICERS

Superintendent

Gregory Ohlmacher
785-749-4502

gcohlmac@sunflower.com

Paymaster

Bill Humenczuk
HP:

bhumenczuk@kc.rr.com

Clerk

Steve McKee

HP: 913-780-9009

smckee@everestkc.net

Division Director

John Fales

HP: 913-579-9541

jtf@kidzdentist.com

Membership Chair

Louis O Seibel

HP: 913-393-3495

C: 913-927-6850

L-seibel@comcast.net

AP Merit Awards & Achievement

Joe B. Robertson, MMR

HP: 816-331-2773

piperva@aol.com

Lightning Slinger Editor

Ted Tschirhart

HP: 816-861-3449

tedtschi@gmail.com

Lightning Slinger

lightnings@gmail.com

Past Superintendent

John Fales

HP 913-579-9541

icatlalfred@gmail.com

Web Master

Richard Kennedy

HP: 913-796-6830

Richiekennedy56@gmail.com

Web

<http://www.tc-nmra.org>

Turkey Creek Division

Is a 501(C)(3)

ORGANIZATION

10/23/2019

October Clerk Report

Our Superintendent Gregory Ohlmacher called meeting to order. 31 people attended.

Shelly Levy is celebrating his 95th birthday and gave us a pinpoint presentation on how he moved Jeff Dutton's layout to his basement. He went thru and show how he cut it up into 14 different sections to get it out of Jeff's house and into his basement. Not an easy task when you understand this layout was never intended to be moved. After the presentation we all went to Shelly's house for treats and to see the layout. You will be hard pressed to find the cuts in the layout. Shelly did an excellent job matching the sections together and adding scenery that matched what Jeff did. Jeff was a professional model builder and owned his own modeling company.

I think going to somebody's house for an open house to view their layout is a great idea and I for one would like to see us do this at least 2 times a year. It's sometimes hard to find 12 clinics a year that all of us have not seen too much before. Everybody likes a layout tour and it gets people working on their layouts if they know a bunch of fellow modelers are coming to see their layout. It's a great motivator and there are a lot of great layouts to see here in KC. There are a number of them that didn't get on tour for the last NMRA convention for various reasons we could go see.

Here is the info on that new hobby shop one last time. So, go by and look, you might even decide to take him up on his offer and go to work there for some extra spending money. I'm sure he knows you might leave a portion of your paycheck there.

Midwest Model Railroad Independence, Missouri

Address: 17331 E US 40 Highway, Suite 101C, Independence, MO 64055

Closed · Opens 10AM Sat

Phone: (816) 399-5226

Friday	10AM–5PM
Saturday	10AM–5PM
Sunday	Closed
Monday	12–6PM
Tuesday	12–6PM
Wednesday	10AM–7PM
Thursday	10AM–5PM

Larry Dowd

na28rd@gmail.com

913-888-6733

One Lionel steam engine & tender 70 years old (I was 8)

One Lionel steam engine & tender ?? years old

One Union Pacific diesel engine 10 years old

I have a picture of actual engine with same number as mine

One Lionel steam engine & tender 6 years old

200+ feet of three rail Lionel track

One trestle bridge with top light.

Water tower with top light

Two wooden tunnel entrances

Ho-made wooden bridge over a steam

One barn

Seven electric switches & lever controls

Three manual switches

Two Lionel transformers

One Union Pacific transformer

One unknown transformer

Two churches

One engine house and round table

One track through engine maintenance building

Two residence houses

One school building and playground equipment

One cemetery grounds and markers

One train depot with light

One city hall

Fourteen buildings (eight with lights)

Gas station with three pumps & tow truck

Jail and prisoners with stone wall

Three building fronts only

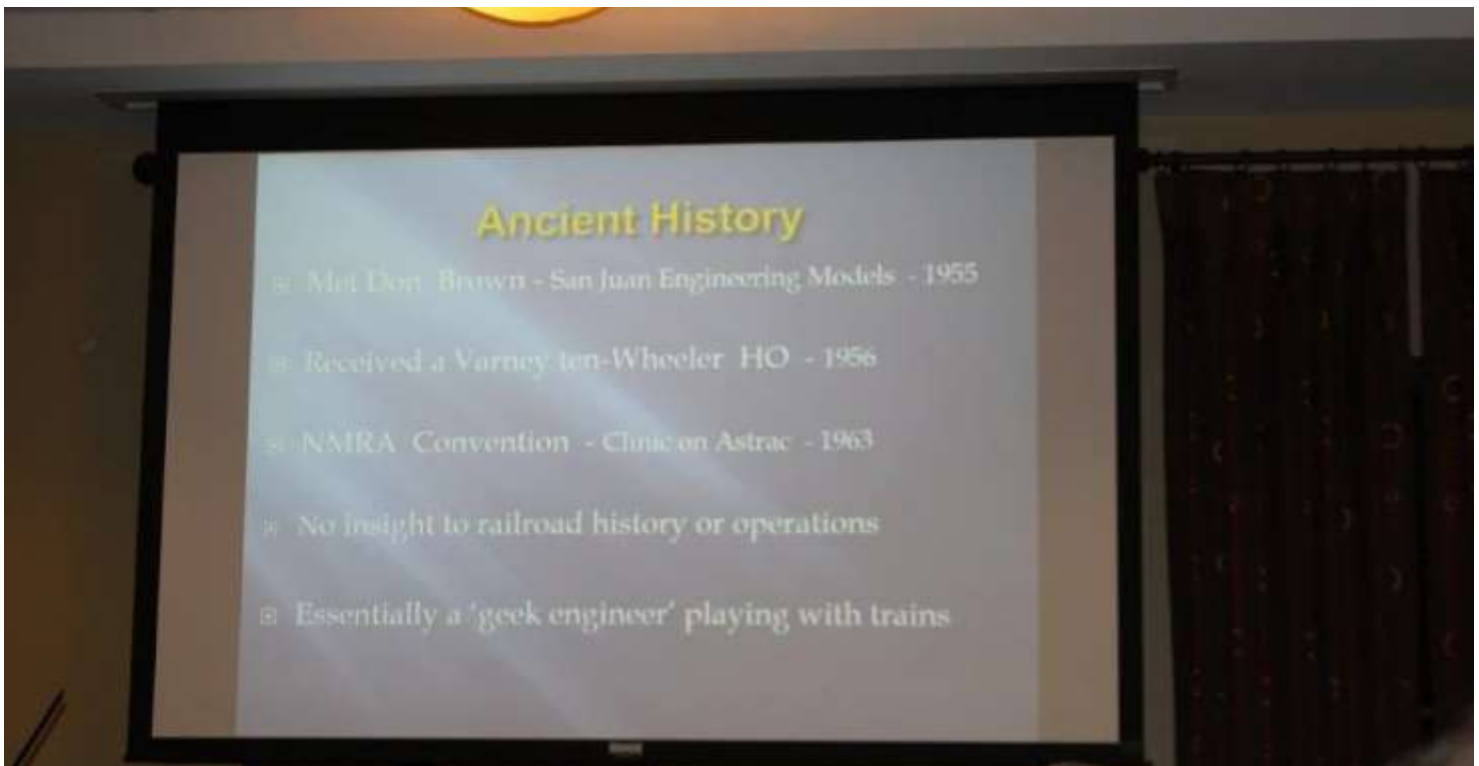
Fourteen cars, trucks and school bus

I'm hearing impaired with a cochlear implant and hearing aid and prefer using e-mail. But I do have a cap phone and willing to talk with you if you don't mind a slight delay.

Larry Dowd

na28rd@gmail.com

913-888-6733 (Lenexa, KS)







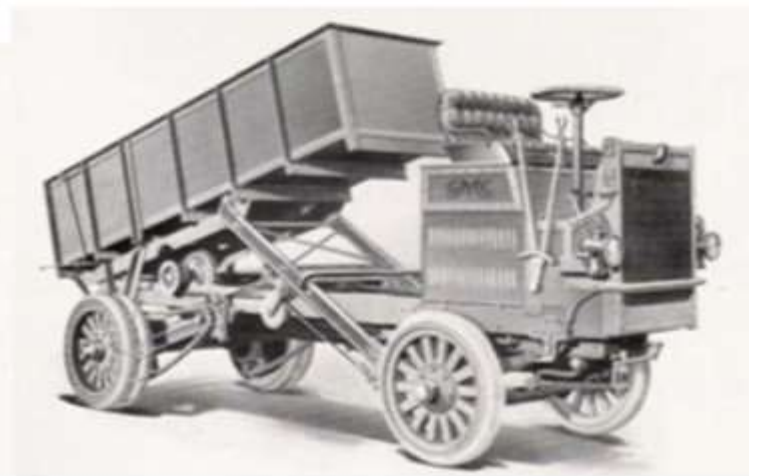
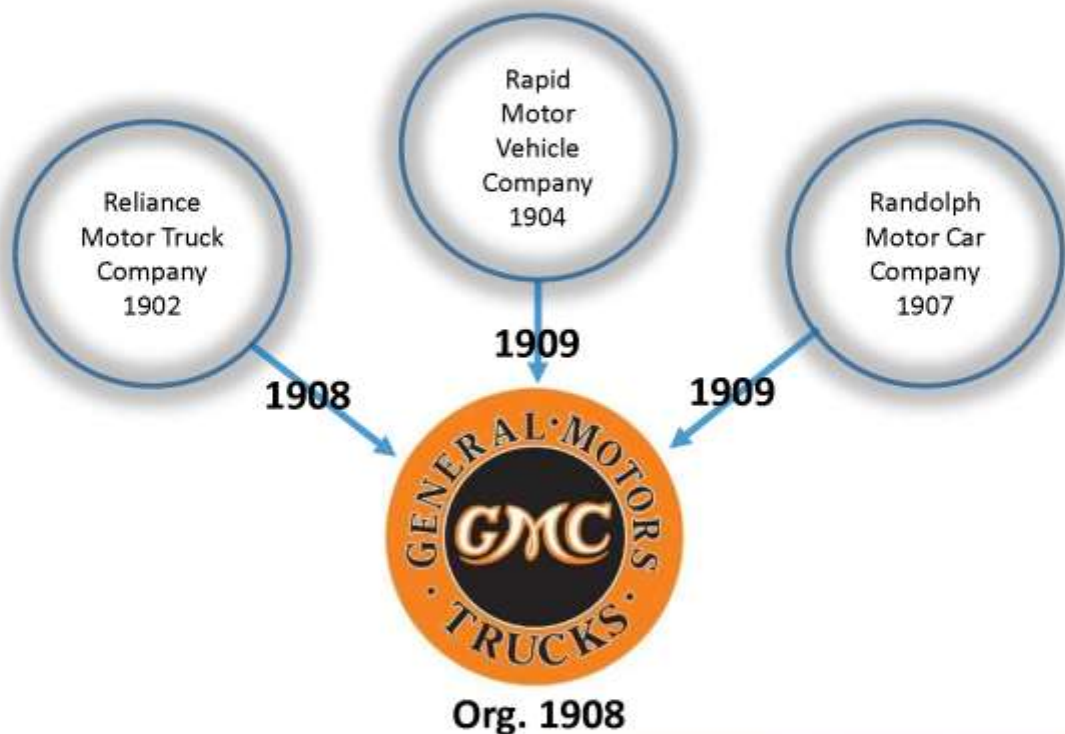


Something You May Find Interesting ...

assembled by Larry Diehl

November 2, 2019

I was researching old "first generation" trucks on-line and discovered a significant amount of information. I found that early work trucks resembled large wagons in early 1900's, turn of the century era. "Work Horse" heavy trucks were finding their way through technology and metallurgy of the day. Engines were small, transmissions and rear axle differentials were light weight. Therefore, early "heavy" trucks were low geared – low speed and chain drives. Reliance Motor Truck Company represented such early development and became one of the "3 roots" of GMC we know today.



Reliance Motor Truck Company

was born in Detroit, Michigan in 1912, under the name Reliance Motor Car Company.

In 1905, Reliance trucks proved to be rugged and reliable, attracting the attention of General Motors. In 1908-1909, General Motors acquired Reliance Motor Truck Company of Owosso, Michigan, and Rapid Motor Vehicle Company of Pontiac, Michigan. Later that year, GM acquired Randolph Motor Company of Chicago, who offered 3/4 ton, 1 ton, 2 ton, 3 ton and 4 ton plus buses. Engines ranged from 22HP 2 cylinder to 34HP 4 cylinder. The GM Truck Corporation (GMC) of Pontiac, Michigan, organized in 1911 to handle sales of the Rapid and Reliance products. In 1914, the GM truck operations are consolidated into one plant in Pontiac, Michigan. The Rapid and Reliance names carry on with GMC truck as product line to help carry on with "brand loyalty".

Key points from published information, "the first century of GMC truck history", by Don Meyer as follows:

1902 **Reliance Motor Company**, the second root of GMC, started business at 61-89 Fort Street East in Detroit. Fred Paige was directing operations.

Grabowsky Brothers reorganized and formed **Rapid Motor Vehicle Company**.

1903 Reliance Motor Company produced and sold their first trucks with 2-cylinder opposed 22HP engines. Several types of cargo bodies and a 12 passenger bus model were available.

1904 In March, the **Rapid Motor Vehicle Company** was formally organized by Max and Morris Grabowsky, Barney Finn and Albert Marx with \$13,000 capitalization.

Rapid Model A was introduced. 75 trucks sold 1902-1904.

1907 **Randolph Motor Car Company** was founded by Eugene Goldman to build motor vehicles and auto parts in a plant at 3900-4000 Union Avenue in Chicago, Illinois.

The passenger car part of Reliance was sold to a Detroit Company.

Reliance built 1-1/2 to 3 ton trucks.

- 1908 Late that year, Durant bought controlling interest in Reliance and reorganized it as the Reliance Motor Truck Company, subsidiary of General Motors Company. William Eaton was President and W.C. Durant was Vice President.
- Max Grabowsky resigned from Rapid and formed Grabowsky Power Wagon Company.
- Rapid offered the first partially enclosed cab on Model E trucks as a part of the new body types including the "canopy top body" with screened sides.
- 1909 In November, Will Durant gained control of Rapid Motor Vehicle Company and made it a General Motors subsidiary.
- General Motors a controlling interest in the Randolph Motor Car Company.
- 1911 On July 22, GM organized the General Motors Truck Company (GMTC) to sell Rapid and Reliance trucks. The new company was located at 88 East Congress Street in Detroit.
- On August 1st, the "GMC" trade name was first used in the business of GMTC. GMC was an acronym for General Motors Company. Application was then made for a US copyright for that trademark.
- 1912 In February, the GMC brand replace Rapid and Reliance brands on trucks then being produced.
- For the first time, all models had the steering wheel on the left side.
- 1913 The manufacturing of all GMC trucks was consolidated in the Rapid Street Plant in Pontiac. Thereafter, both manufacturing and sales operations were conducted as the General Motors Truck Company. By then all the other truck manufacturers that GM had acquired had either been sold or dissolved.
- 1915 GMC Truck Division of General Motors was formed.
- 12-passenger jitney light bus body was introduced on the model 15 chassis and provided additional sales for a short time.
- Pierre S. duPont became chairman of the GM Board of Directors of November 16.
- 1916 On October 13, General Motors Corporation was incorporated in Delaware. The General Motors Company of New Jersey was dissolved. On June 1, W.C. Durant returned as President of GM.

For additional detail, reference the "First Century of GMC Truck History", on-line.

GENERAL MOTORS TRUCK COMPANY

SUBSIDIARY OF YELLOW TRUCK AND COACH MFG. CO.

PONTIAC, MICHIGAN

PRODUCTS—Motor Trucks and Tractor Trucks from 1 to 15 tons capacity.

The GMC Road Builder Trucks listed below were developed by GMC engineers through actual association with road building operations.

General Motors has met the specific demands of road builders with a complete line of high quality road building equipment specialized to meet the contractor's defined needs and built according to exclusive GMC principles with economies warranted only by the tremendous purchasing power of General Motors.



GMC 1-BATCH ROADBUILDER

Simple, powerful and long-lasting the GMC one Batch Roadbuilder is an ideal unit for handling a line of 40 ton work.

It is powered with the sturdy and economical 27 horsepower GMC engine which delivers a speed of 20 miles per hour or more. Its most striking assets are its wide and split end steering gear and feature in its rear construction.

It is equipped with steel protective front fenders and steel spring seat ribs, steel disc wheels, and steel, iron, and cast iron, fan belt, auxiliary rear springs and front fenders.

One well located pull body with pushbody power limit or auxiliary steering device or any other equipment at the buyers option will be furnished.



GMC 2-BATCH ROADBUILDER

Like the one-Batch truck the GMC 2-Batch Roadbuilder is equipped with all means required to maintain speed and insure lowest fuel rate.

The service power available in the 2-Batch Roadbuilder through the GMC Two-range Transmission makes it useful in winter-weather jobs on any road building operation and especially in the handling of material.

It handles 20 cu. yd. of filling material with ease at a speed of 20 miles an hour or more. It is powered with the 27 horsepower GMC engine, equipped with disc front and dual rear Flywheels, iron, standard belt and hydraulic steering mechanism, steel disc, steel and iron fenders, front bumper and rear fender.



GMC 2 1/2-Ton Dumper

GMC 2 1/2-TON DUMPER

The standard 2 1/2-ton GMC has long been a favorite among road builders and building construction operators in every field.

The latest model is the GMC 27 horsepower engine, which coupled with the Two-range Transmission gives it unsurpassed work capacity and tremendous torque without sacrificing economy.

It is an efficient unit for the road builder in the hauling of gravel, crushed stone, cement, sand and other construction materials, and in serving the school.

THE GMC BIG BRUTE, 5-TON DUMPER

In the construction of gravel and macadam roads, in the work of grading of aggregate and in unloading, the GMC BIG BRUTE 5-ton is unrivaled.

Efficient structure in the GMC engine coupled with 20 per cent more pulling capacity through the GMC Two-range Transmission gives the unit tremendous performance ability.

Equipped with the GMC heavy body and front and spreading ball joint GMC BIG BRUTE handles the loading and distribution of gravel and crushed stone with ease and precision.

Heavy body, front, concrete solid rear fender and rear, Puller Cab are standard on the GMC Road Builder unit.



GMC Big Brute, 5-Ton Dumper

THE GMC BIG BRUTE 5-TON DUMPER

Where volume and bridge conditions will permit, the GMC BIG BRUTE 5-ton is a big capacity unit used in unloading and gravel road building, in the work of grading of aggregate and in unloading.

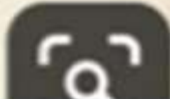
Like the 2 1/2 and 2 1/2-ton units it has a tremendous torque pulling capacity through the GMC Two-range Transmission and is powered with the GMC engine, which is of better design throughout the GMC line.

It is equipped with the GMC heavy body and front and spreading ball joint, concrete solid rear fender and rear, and Puller Cab.



GMC Big Brute, 4-Ton Dumper

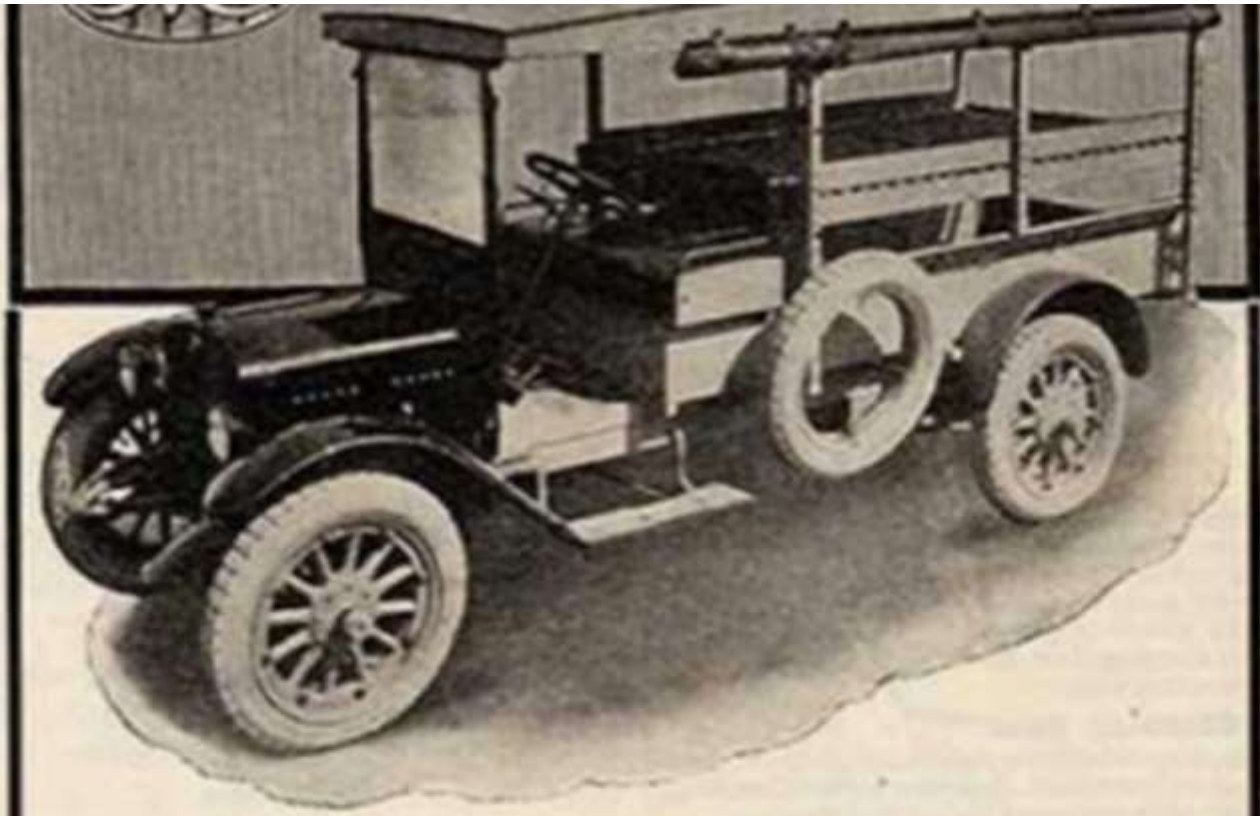
1936 Yellow Truck Catalogue







Packard Model TA '1905



GMC Trucks Fit Farm Requirements

GMC is a real truck through and through. Every part used in both engine and chassis is a genuine truck part—no passenger car units are used. And each part is made oversize to withstand the heavy loads and bad going that every farm truck must meet. There is sturdiness, there is surplus strength in GMC. Yet, in spite of these, there is the strictest economy in first cost and in operation.

*Learn more about GMC and what they will do for you.
Write today for free booklet "Motor Trucks on the Farm."*

GENERAL MOTORS TRUCK COMPANY

Division of General Motors Corporation
PONTIAC, MICHIGAN

General Motors Trucks



7



General Motors Trucks

WHEREVER the big important jobs are to be done you will find GMC Trucks. It is in the strenuous work that reliability is needed most.

Reliability, along with other motor truck requirements, depends on quality, and quality is the first GMC virtue.

For the sake of such quality nothing is ever sacrificed. Quality comes first. It is built in at the factory. It comes forth in faithful performance.

Those who know GMC Trucks best appreciate most what these statements mean.

GENERAL MOTORS TRUCK COMPANY

One of the Units of the General Motors Corporation

PONTIAC, MICH.



1920 Ad GMC Pontiac Michigan General Motors

Wiseman Model Services, wisemanmodelservices.com, sells some old time trucks as white metal kits. (Not as difficult to assemble as you might think!) Wiseman sells vehicles in the 1920's and 1930's. Kleiber, White, Mack AC, Ford and Autocar; many options of "open and closed" cabs. The Autocar can be modified to resemble earlier years.



REO Express Box Truck
 The REO High Wheel Trucks are precision laser cut wood with white metal detail parts. Includes three windshield arrangements and a motor with components. Detailed instructions and photos included. See more photos and information on our website.
 #232 REO Express Box Truck \$37.95
 Berkshire Valley Models
 438 Morgan Woods Dr.,
 Fenton, MO 63026
 314-401-4005
www.berkshirevalleymodels.com
 email:berkshirevalley@gmail.com

Wiseman Model Services
wisemanmodelservices.com

**HO scale
 Autocar
 Canopy Truck**
 Kit #OT-5140 \$22.95



JORDAN PRODUCTS
Highway Miniatures
 HO MODEL KIT SCALE 1:48(1/2)

360-209
 1923 MACK
 STAKE
 TRUCK
 \$4.25



JORDAN PRODUCTS
Highway Miniatures
 HO MODEL KIT SCALE 1:48(1/2)

360-212
 1923
 MACK
 \$4.25
 TANK TRUCK



BERKSHIRE VALLEY



Kit #203
 "1934 Ford On3 Rail Truck - Work Vehicle"

Kit # 201 1934 Ford Small Stake Truck



Wheel Works



34 FORD
 PICKUP TRUCK
 HO Scale 1/48-1/2
 \$14.75

Wheel Works



34 FORD
 FLATBED TRUCK
 HO Scale 1/48-1/2
 \$14.75

Wiseman Model Services
wisemanmodelservices.com

**HO scale
 1926 White
 Wrecker**
 Kit #OT-5054 \$24.95



Wiseman Model Services
wisemanmodelservices.com

**HO scale
 Kleiber
 Open Cab
 Semi with Van Trailer**
 Kit #OT-5143 \$34.95



Wiseman Model Services
wisemanmodelservices.com

**HO scale
 Kleiber
 Closed Cab
 Stake Truck**
 Kit #OT-5115 \$22.95



Wiseman Model Services
wisemanmodelservices.com

**HO scale
 Mack AC
 Dump Truck**
 Kit #OT-5132 \$26.95



Painting ... Colors

by Larry Diehl
November 2, 2019

Painting of trucks somewhat follows era of manufacture. Large trucks appear to be mostly black, but, examples of dark blue, dark green and dark red can be found.

As time went on, color on trucks is more common in the 1920's and more so in the 1930's. Add more shades of blue, green, red, plus yellow (ochre) and gray. "Two tone" evolved to become commonplace. Fenders and tops black or charcoal brown. Sometimes hoods also were black or brown. Color appears on the bodies. Bumpers – black, gray, silver. Wheels were interesting. Frequently black, but red, yellow and blue, regardless of body color became commonplace on spokes and rims.

I have seen examples of dark red and dark blue fenders with black bodies.

Interiors were usually black, dark brown as in leather, tan, taupe, gray cloth are colors I have noted. I think many interiors were done in "hop sack" canvas materials (can't prove it).

Following are examples of real trucks (from Pintrest) plus my photos of real trucks including repaints and models.



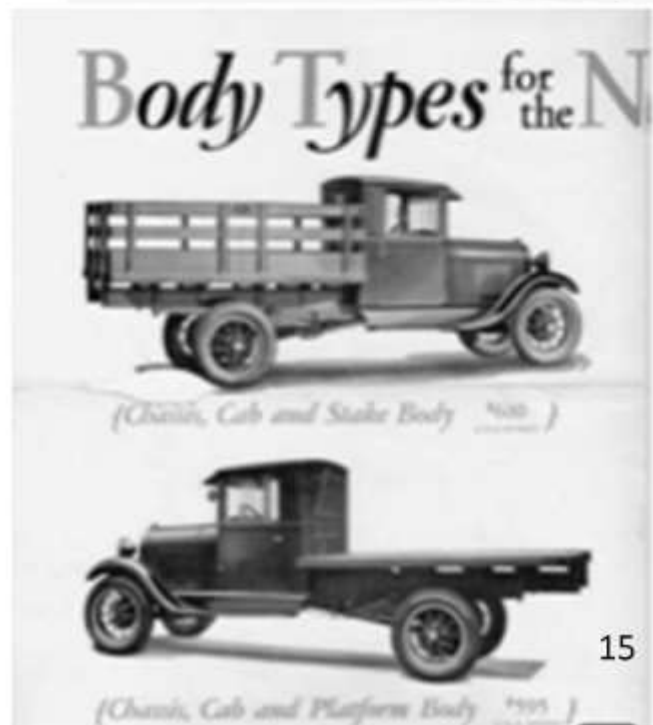






13











Oops....not a truck! ... Modern era!

by Larry Diehl

18

Come celebrate the 40th Anniversary of the National Narrow Gauge Convention!

ST. LOUIS, MISSOURI  SEPTEMBER 2-5, 2020

NATIONAL NARROW GAUGE CONVENTION
40th
ST. LOUIS
2020



Convention Features

- All Under One Roof —
35,000 sq. ft. Exhibit Space
- 90 Clinics by 45 Clinicians
- 25 Select Home Layouts —
14 are Narrow Gauge
- Modular Layouts
- Over 80 Manufacturers & Vendors
- Model and Photography Contest
- Complimentary Tickets to the National
Museum of Transportation
- Auction to Benefit Narrow Gauge
Preservation Foundation
Bring items for donation
- Non-Rail Activities
Historic Old Town St. Charles
Bus Tours (see website)
Missouri Botanical Gardens
The Arch Grounds and Museum
The Missouri Wine Trail

Embassy Suites by Hilton • 2 Convention Center Plaza • Saint Charles, Missouri 63303

Convention Hotel & Convention Center — **Call 1-800-362-2779 for hotel reservations**

Ask for "40th Narrow Gauge Convention Rate."

\$139/night for 2 guests/room,

\$149 for 3 guests, and

\$159 for 4 guests.

Rates will be honored for the whole week.

Each room has a sofa bed. Includes full breakfast, complimentary happy hour drinks, free parking, free Wi-Fi and complimentary shuttle service within 3 miles of hotel.



40th National Narrow Gauge Convention Registration

Registration is \$99 (\$125 after June 1, 2020). Includes spouse. No refunds after August 1, 2020.

Registration forms can be downloaded from the website.

Contact info

email: 40chnngc@gmail.com

Send mail to: Bob Lenz, Registrar • 907 Parkfield Terrace • Manchester, MO 63021

For all the details and latest info see our website at:

www.40nngc.com



40TH NATIONAL NARROW GAUGE CONVENTION

St. Louis, Missouri
Sept. 2 – Sept. 5, 2020

Convention Registration

Name		Nick Name (Badge)		Spouse Name (complimentary)					
Street Address									
City		State		Zip					
Phone		E-Mail							
Dates are Postmark Dates NO REFUNDS AFTER 1 AUGUST 2020				Before 6/1/2020		6/1/2020 and After	Totals		
Registration (Spouse and Children under 16 are Free)				\$99		\$125	\$		
Pre-Order Form for Convention Products (Limited Quantities Available at Convention)			S QTY	M Qty	L Qty	XL Qty	2XL Qty	3XL QTY	
Blue Denim Shirt: Long Sleeve S-M-L-XL = \$40.00 2XL-3XL = \$42.00/\$44.00									\$
Blue Denim Shirt: Short Sleeve S-M-L-XL = \$38.00 2XL-3XL = \$40.00/\$42.00									\$
Dark Heather Tee shirt: S-M-L-XL = \$15.00 2XL-3XL = \$18.00/\$19.00									\$
Royal Blue Polo Shirt S-M-L-XL = \$30.00 2XL-3XL = \$32.00/\$34.00									\$
All products have the convention logo embroidered on them with the exception of the T-shirts which are silk screened. Tee Shirts must be ordered by 1 August 2020								Total	\$

Convention Hotel:
Embassy Suites Hotel
Two Convention Ctr. Plaza
St. Charles, MO 63303
Tel. 636-986-5544
www.embassysuites.com

Early Hotel Reservations are
Recommended. Ask for Special
Convention Rate
OF \$129.00/day

Make Check or Money Order Payable in USD to:
40th National Narrow Gauge Convention

Send to:
Bob Lantz, Registrar
907 Parkfield Terrace
Manchester, MO 63021
314-457-9687

Visit our Website at <http://www.40nngc.org>

Official Use: Amount Received: _____	Registration Number: _____
<input type="checkbox"/> Pay Pal	<input type="checkbox"/> Check
	<input type="checkbox"/> Cash



40TH NATIONAL NARROW GAUGE CONVENTION

St. Louis, Missouri
Sept. 2 – Sept. 5, 2020

Clinician Registration

Thank you for offering to present a clinic at the convention. You will be scheduled for two, one hour sessions. We have allowed 30 minutes for set up and tear down between clinics. We have limited time slots and we attempt to balance the subject matter. We will advise you if your clinic is accepted. If your clinic is accepted your registration will be refunded. Please use the back of this form to provide a brief (about 70 words) synopsis of your clinic.

Name	Nick Name (Badge)	Spouse Name (complimentary)
Street Address		
City	State	Zip
Phone	E-Mail	
Title of Clinic (Please use the back of this form to provide a brief (about 70 words) synopsis of your clinic:)		
I require a 35mm Carousel Projector <input type="checkbox"/> Bring you own slide tray		I require an LCD Projector <input type="checkbox"/> Please bring you clinic on a thumb drive in Power Point format, we will provide a PC laptop computer.
Other Special Requirements:		
Clinician Registration : Dates are Postmark Dates NO REFUNDS AFTER 1 AUGUST 2020	\$99 Before 6/1/2020	\$125 6/1/2020 or Later
Pre-Order Form for Convention Products (Limited Quantities Available at Convention)	S Qty	M Qty
Blue Denim Shirt: Long Sleeve S-M-L-XL = \$40.00 2XL-3XL= \$42.00/\$44.00	L Qty	XL Qty
Blue Denim Shirt: Short Sleeve S-M-L-XL = \$38.00 2XL-3XL= \$40.00/\$42.00	2XL Qty	3XL Qty
Dark Heather Tee shirt: S-M-L-XL = \$15.00 2XL-3XL= \$18.00/\$19.00		
Royal Blue Polo Shirt S-M-L-XL = \$30.00 2XL-3XL= \$32.00/\$34.00		
All products have the convention logo embroidered on them with the exception of the T-shirts which are silk screened. Tee shirts Must be ordered by 1 August 2020		Total

Convention Hotel:
Embassy Suites Hotel
Two Convention Ctr. Plaza
St. Charles, MO 63303
Tel. 636-946-5544
www.embassysuites.com

Early Hotel Reservations are Recommended. Ask for Special Convention Rate Of \$139.00/day

Make Check or Money Order Payable in USD to:
40th National Narrow Gauge Convention
Send to:
Bob Lenz, Registrar
907 Parkfield Terrace
Manchester, MO 63021
314-497-9687

<http://www.40nngc.org>

Official Use: Amount Received: _____	Registration Number: _____
<input type="checkbox"/> Pay Pal	<input type="checkbox"/> Check
	<input type="checkbox"/> Cash



35th Annual Sn3 Symposium

Thursday, April 2th through Saturday, April 4th, 2020
Albuquerque, NM

www.Sn32020Abq.org

Vendor Registration

Company Name: _____

Address: _____

City: _____

State: _____

Zip: _____

Email Address: _____

Print Clearly Please

Business Phone: _____

Cell Phone: _____

Registration: \$55.00 through December 31, 2019 and \$65.00 after December 31, 2019 (No charge for Spouse)

Website Address: _____

Do you want your web site linked from the 2020 Sn3 Symposium web site? YES NO

All individuals working a vendor table must be registered:

Name: _____

Name: _____

Name: _____

Name: _____

Number of Registrations Needed? _____ x \$55.00 prior to 12/31/19
\$65.00 after 12/31/19 Registration Total \$ _____

Number of Tables needed at \$25.00 per table? _____ Table Total \$ _____

Electrical Hook Up: Not available at all tables at \$10
(includes multi tables) Electrical \$ _____

Make Checks Payable to: Sn3 Symposium

Send Completed form and payment to:

Sn3 Symposium
c/o Dan Pyzal
4305 Welford Dr, NE
Albuquerque, NM 87107-4824

Direct questions to:

Dan Pyzal
Cell: (505) 250-5756
Sn3Info@Sn32020Abq.org

Total Enclosed \$ _____

Ramada Plaza by Wyndham Albuquerque Midtown

2020 Menaul Boulevard Northeast,
Albuquerque, New Mexico 87107
1-505-884-2511
1-866-650-4900

Ask for the 35th Annual Sn3 Symposium rate

The Symposium rate is \$67.00 per night for 1 King, or 2 Double bed occupancy. Make your reservations directly by phone with the Ramada Plaza Midtown (between 8am—5pm M—F if possible). **NOTE: The Symposium rate is available if booked no later than 5pm MST, March 6, 2020. Symposium Rates extend 7 days before and after the Symposium subject to availability.**



Model Railroad Display

January 15 - 19, 2020

Indian Creek Library

16100 W. 135th St.
Olathe, KS 66062
(913) 971-6835



Come see an operating model railroad. Experts will be on hand to answer questions about the display and model railroading. Everyone is welcome! Free!



 OlathePublicLibrary

Wednesday, January 15	2:00 - 8:00 p.m.
Thursday, January 16	2:00 - 8:00 p.m.
Friday, January 17	10:00 a.m. - 6:00 p.m.
Saturday, January 18	10:00 a.m. - 5:00 p.m.
Sunday, January 19	1:00 - 3:30 p.m.

Model Railroad Display

January 15 - 19, 2020

Indian Creek Library

16100 W. 135th St.
Olathe, KS 66062
(913) 971-6835



Come see an operating model railroad. Experts will be on hand to answer questions about the display and model railroading. Everyone is welcome! Free!



 OlathePublicLibrary

Wednesday, January 15	2:00 - 8:00 p.m.
Thursday, January 16	2:00 - 8:00 p.m.
Friday, January 17	10:00 a.m. - 6:00 p.m.
Saturday, January 18	10:00 a.m. - 5:00 p.m.
Sunday, January 19	1:00 - 3:30 p.m.

SWITCH LIST November 2019

*new since last issue

The Switch List contains all known Mid-Continent Region, NMRA, train shows and Division meetings. It also lists all known club shows and swap meets in the Mid-Continent Region (IA, IL, MO, AR, NE, KS, and OK). To list your event information please Email: L-seibel@comcast.net, or Mail Information: Louis Seibel, 1069 N Logan, Olathe, KS 66061. To subscribe, or unsubscribe, to The Switch List send an email to the above link. Look for us on the MCoR web site: www.mcor-nmra.org **Please put me in your newsletter.**

DIVISION MEETINGS

Division 1: INDIAN NATIONS DIVISION (Tulsa OK): Unless otherwise specified all Indian Nations NMRA meets are held at the new Hardesty Library, 8316 E. 93rd. St. just east of Memorial Rd. in Tulsa, OK. Library opens at 9:00 am and the meetings start at 9:30 am: Superintendent - Dave Salamon 918-272-5512 or drs_rr@yahoo.com Web page:

www.tulsanmra.org

Division 2: TURKEY CREEK DIVISION (Kansas City Area): 4th Tuesday every month at 7:00PM except Dec Holiday Party (Dec 17, 2019), Lakeview Village, 9000 Park Pl., Eastside Terrace Bldg., Lenexa KS; For current information: Louis Seibel, L-seibel@comcast.net or 913-393-3495 or 913-927-6850; or the Division Timetable <http://www.tc-nmra.org/TC-Calendar.html>

Division 3: KATE SHELLEY DIVISION (Ames Area): 4th Thursday of every month except: 3rd Thurs in Nov and no meeting in Dec; 6PM Business and 7PM get together; anything railroad goes. Ames Public Library, 515 Douglas Ave, Ames IA

Division 4: EASTERN IOWA DIVISION: Mike Barkhurst, superintendent; e-mail: cmbarkhurst@gmail.com For division activities check out our website monthly at: <https://sites.google.com/site/easterniowadivision>

Division 5: WESTERN HERITAGE DIVISION (Omaha NE/Council Bluffs IA): 2nd Saturday (except June and December) at noon in the Sump Memorial Library at 222 N Jefferson St. (2nd & Washington Streets) Papillion NE (across from Runza). Visit www.whdnmra.info for more info and a map. The new web site is found at <http://www.whd.mcor-nmra.org>

Division 6: KANSAS CENTRAL DIVISION: 1st Saturday of even numbered months. Meetings start at 1PM. For the next meeting's location and program please email kd0r@fhrd.net.

Division 7: CHISHOLM TRAIL DIVISION (Wichita KS): 1st Tuesday each month at the Olivet Baptist Church, 3440 West 13th St, Wichita, KS 67203 (13th Street North & High Street). Gathering-6:45PM; NMRA meeting 7:00 - 9:00PM Information Alan A. Aagaard email:

alan.a.aagaard@gmail.com

Division 10: GATEWAY DIVISION (ST. Louis, MO) 3rd Monday each month, 7:00 PM, Odd numbered months: Trinity Lutheran Church, 14088 Clayton Road at Woods Mill Rd (Hwy 141), Ballwin, MO; Even numbered months: VFW Hall, O'Fallon, IL; Info: <http://www.gatewaynmra.org/division.htm>

Division 14: COWBOY LINE DIVISION (Norfolk NE): 3rd Thursday each month, 7:00 PM at HyVee East upstairs meeting room. Corner 1st Street and Norfolk Ave, Info: Dennis M. Brandt, Phone 402-992-2415, email den-nisbrandt44@gmail.com

Division 15: OKLAHOMA HEARTLAND DIVISION (Oklahoma City, OK) meets in the even months in the Oklahoma City area; Contact OHD Director at dir-2915@mcor-nmra.org All who are interested in Model railroading are welcome.

Division 17: WESTERN KANSAS DIVISION (Dodge City, KS): Meetings pending a new location. Info: Robert Simmons, Division Director, 620-521-3591(C) or 620-272-0444(H); Facebook page "Western Kansas Division"; e-mail: train-man55@hotmail.com

Division 18: PLATTE VALLEY DIVISION (HASTINGS, GRAND ISLAND, and KEARNEY NE): Meet quarterly in members' homes on a rotating basis or at sites of interest. New members are always welcome. Info: Todd L. Petersen, Division Director, 308-832-2200 or todd@gtmc.net

Monthly News in a Glance

NAVRE

Monday, November 4 – Abilene/Salina, Hitching Post, 100 SE 5th St., Abilene. Information: Tony Schmitt, asch9438@cox.net

Monday, November 11 – Parsons, The Chinese Chef, 900 N. 16th St., 11:30. Information: Jimmy W. Dodds, jim-mywodods@gmail.com

Tuesday, November 12 – Topeka, The UKs Health Systems, St. Francis Campus, 2nd floor, room 1, 1700 SW 7th St., 9:30-11:00. Information: Roger Barr, rogerwbarr@gmail.com

Wednesday, November 13 – Marysville, Ricky's Café, Hanover, 11:30. Information: rstein@diodecom.net

Monday, November 25 – Wichita, Ourr's Family Dining, 1606 S. Georgetown St., 11:20. Information: Tony Schmitt, asch9438@cox.net

DIVISIONS

Monday, November 4 – Chisholm Trail, Olivet Baptist Church, 3440 W. 13th St., Wichita, 7:00-9:00. Information: Alan A. Aagaard, alan.a.aagaard@gmail.com

Sunday, November 17 – Indian Nations, Hardesty Library, 8316 E. 93rd St., Tulsa, 9:30-12:30. Information: Dave Salamon, drs_rr@yahoo.com

Tuesday, November 26 – Turkey Creek, Lakeview Village, Eastside Terr. Bldg, 9000 Park Pl., Lenexa. 7:00. Information: Louis Siebel, l-siebel@comcast.net or www.tc-nmra.org/TC-Calendar

Every Tuesday – Western Kansas, 409½ N. Main, Garden City, 6:30-9:00. Information: Robert Simmons, train-man55@hotmail.com

NRHS

Friday, November 8 – Topeka Chapter, Ward-Meade Historic Site, Preston-Hale Room, 124 NW Fillmore St., 7:00. Program “Restoration of the Wilda Depot – Dave Calwell

Friday, November 22 – Kansas City Chapter, Union Station, KC Terminal Board Room, 3rd floor, 7:00. Information: Ed Conrad, Heartlandrails@aol.com

MODEL RAILROAD CLUBS

Friday, November 1 – Topeka N-Track Associates, at member’s home, 7:00. Information: Bob Wright, 785-273-7835

Sunday, November 3 – Cherry Valley Model Railroad, Leatherock Hotel, 2nd floor, 420 N. Depot St., Cherryvale, 1:00. Information: John R. Dhooghe, john@cvmrd.com or www.cvmrv.com

Thursday, November 7 – Augusta Model Railroad Club, 6th & School Sts., 7:30. Information: info@augustahorrclub.org

Saturday, November 9 – Kansas Central Model Railroad, 16 E. 3rd, Hutchinson, 11:00-4:00. Information: www.kansascentralmodelrailroaders.org

Saturday, November 9 – Kansas Pacific Model Railroad, Ellis Museum, 911 Washington, 10:00. Lunch at a restaurant afterward. Information: Tom Robinson, railway@gbta.net

Saturday, November 9 – Frankfort Subdivision, 416 W. 1st St., 10:00-3:00. Information: Joe McTee, joem@bluevalley.net

Saturday, November 9 – Wichita Toy Train Club, 130 S. Laura, 10:00-5:00. Admission charged

Sunday, November 10 – Heartland N-TRAK of Greater Kansas City, 131 S. Water St., Liberty, MO, 1:00. Information: Bob Osborn, 816-452-9227

Monday, November 11 – Lawrence Model Railroad, Bridge Pointe Community Church, 601 W. Terrace. Information: www.lawrencemodelrailroadclub.org

Monday, November 18 – Topeka Model Railroaders, Topeka/Shawnee Co. Public Library, 1515 SW 10th, 7:00. Information: Tony Fox, tfox57@gmail.com

Thursday, November 21 – Kansas City Narrow Gaugers, at member’s layout, 7:00. Information: Dean Windsor, On3@worldnet.att.net

Saturday, November 23 – Frankfort Division

Saturday, November 23 – Wichita Toy Train Club

Sunday, November 27 – Cherry Valley Model Railroad

Saturday, November 23 – Kansas Central Model Railroad

Every Saturday-Sunday – North East Kansas Model Railroaders, 12” scale, 1440 N. 6th St., Atchison, Sat. 10:00-4:00, Sun.

12:00-4:00. Information: Otto Wick, 913-367-7536, or Steve Schaefer, 913-367-6202

Every Sunday – Weekend N’gineers, 16624 W. 126th St., Olathe, 1:00. Information: Ken Clark, hapheart@swbell.net

Every Sunday – Mid-Kansas Model Railroaders, 1130 E. Kansas, McPherson, 2:00-5:00. Information: John Madden, MKmr@cox.net

Every Monday – Garden City Model Train, 408 N. Main, back entrance, 6:30. Information: Robert Simmons, train-man55@hotmail.com

Every Tuesday – Ozarks Model Railroad Association, 429 W. Commercial St., Springfield, MO, 7:00. Information: Ron Williams, rwilliams3129@gmail.com

Every Wednesday – Greater Kansas City Model Railroad Club, 6060 NW Waukomis Dr., Kansas City, MO, 7:00. Information: J. D. Spicher, jdgspicher@aol.com or W. L. Ohmell, wohnell@sbcglobal.net

SPECIAL EVENTS

Friday-Saturday, December 6-7 – Old Prairie Town “Holiday Happenings”, 124 NW Fillmore, Topeka. Topeka Chapter NRHS will give tours of Pauline depot, handcar rides

Friday-Saturday, December 13-14 – Old Prairie Town “Holiday Happenings”

MEETINGS GARDEN RAILROADS

Sunday, November 10 – Wichita Area Garden Railway Society, at member’s layout, 1:30. Information: Nancy Marin, nan-marin@att.net

Thursday, November 28 – Tulsa Garden Railroad Society, Free Will Baptist Church, 1190 N. Mingo Rd, 7:00. Information: info@tulsarailroadclub.org

HISTORICAL CLUBS

Thursday, November 7 – Round Table, Paul & Jack’s Tavern, 1308 Clay St., Kansas City, MO, 6:00. Program: TBA. Information: Robert Walz, rmwalz@sprintmail.com

Saturday, November 9 – (note change of regular date) Heart of the Heartlands, Webb Center, Carona, 1:00. Annual Meeting; covered dish luncheon, meat provided, bring a side dish

SHOWS and CONVENTIONS

Sunday, December 1 – Mid-America Train & Toy Show, Kansas City Expo Center, 11730 NW Ambassador Dr., Kansas City, MO (129 N, exit 13 east). Adult \$5.00, child 12 & under free. Information: www.MidAmericaTrainAndToyShow.com

TRAIN RIDES

Saturday, November 16-Sunday, November 17 – The Polar Express, Midland Railway, Baldwin City. Tickets: 785-594-1335

Saturday, November 23-Sunday, November 24 – The Polar Express, , 4:15, 6:00, 7:45

Friday, November 29 – The Polar Express, 4:00

Saturday, November 30 – The Polar Express, 4:15, 6:00, 7:45

Sunday, December 1 – The Polar Express, 4:15, 6:00

The Switch List is a service of Mid-Continent Region, NMRA.