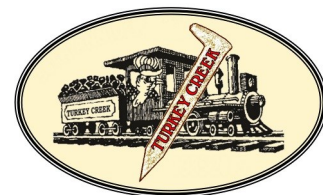


LIGHTNING SLINGER

Sept 2023



Turkey Creek Division of the



Mid-Continent Region, NMRA

“For all gauges and all ages”

TC-NMRA Mtgs

Sept 26th

Layout Control *Mark Juett*

Making People *Marty Vaughn*

Oct 24th

TC Modeling Challenge

Nov 28th

3D Printing *John Fales*

MMRR Museum *Dale Shipman*

Mtg Time:

7:00 to 8:45pm

Location:

Conference Room

Eastside Terrace Bldg.

Lakeview Village Campus

RR Community

Summer: Trains Transportation &
Transformation of Johnson Co.

JOCO Arts & Heritage Center

8788 Metcalf Ave Library

Sept 23rd Train Show

Springfield, MO

Ozarks Model Railroad Assoc.

Sept 30th & Oct 1st Train Show

Topeka, KS

Feb 3rd/4th Train Show

Wichita KS

Chisolm Trail Div. NMRA

WHAT'S INSIDE

- Next meeting Highlights
- Reports
- Pike Bio's, Visits, Projects
- Tributes and Legends
- Calendar
- Resources
- Want Ads

Division Meeting Sept 26th, 7pm

(Location: Lakeview Village Campus)

Clinic Topic: Layout Control Options

This month Mark Juett “advances” layout control with information on CMRI, JMRI, and LCC Bus options and hardware. Last month Martin Wade showed some basic layout control with direct wiring and DCC control bus. Mark will now take you to the next level on strategy and hardware on “secondary bus” communications. Learn why these options and more advanced solutions might be just the “ticket” for your railroad.

Clinic Topic: Making People (Update)

Marty Vaughn has been one of the “go-to” favorites for people making which I find amazing as he does N scale. Clearly if he can make N scale people then HO and above will be awesome. I have heard Marty even has some newfound techniques and supplies to take it up another notch. Everyone needs people to help our layouts come alive so come to learn more about ‘populating’ your layout!

Come Join the fun!

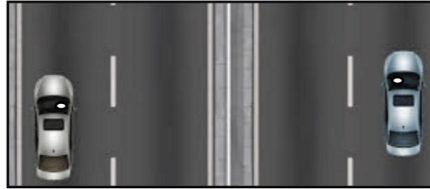
Election Nominations begin in the September Meeting!

Mtg Location: Lakeview Village Campus

See last page for details

Superintendent Report: Missy Levy

Recently, I had a friend contact me about some overseas travel and was asking for guidance on what not to miss, a list of "must see", as well as the culture. During our conversation, I gave her and her husband a tip on driving... look out the driver's window and if you see the center line of the road... you are on the correct side. This works whether you are on the left side of the street or the right side of the street.



I have also done conference management in my past career. I remember a person was upset about the directional signs not pointing in the correct direction. Fortunately, here is another tip on the "arrow" signs... they work both ways. You just need to rotate it 180 degrees.



In Martin Wade's clinic in August, he also had a tip on checking the polarity. Just flip it around. It works both ways. Perhaps coming to the meetings, chatting with other modelers, and learning from the clinics, we pick up great tips to build our knowledge of model railroading.

So, my # one tip for all you model railroaders, submit "a tip" with the editor about how to model and I am fairly confident that you will find more tips in the lightning slinger. Doing this small task keeps us connected and growing in the hobby.



Happy railroading and keep sharing the valuable tips!

Looking forward to seeing everyone... Missy

Leader Reports:

With the MCoR Regional convention, NMRA Texas National Convention, National Narrow Gauge Convention and a few vacations the leadership staff struggled to keep up so reports will resume next month. I hope all of you were able to attend one or more of these great opportunities to Learn, See, and Visit with old friends to stir those Model Railroading juices as we come back together this fall, looking forward to more "time on the railroad". *Editor*

Election Nominations will begin in the September Meeting!

Officers

Superintendent

Missy Levy

*Superintendent.TurkeyCreekNMRA
at gmail.com*

Paymaster

Bill Humenczuk

*Bhumenczuk
at kc.rr.com*

Clerk

Steve McKee

*Rgssmckee
at gmail.com*

Division Director

Ray Brown

*Dir-2902
at mcor-nmra.org*

Membership Chair

Phil Stock

*Mikadoman
at msn.com*

Achievement Chair

Bill Scheerer

*Wjscheer
"at" ieee.org*

Web Master

Richard Kennedy

*Webmaster.TurkeyCreekNMRA
<at> gmail.com*

Lightning Slinger Editor

Martin Wade

*Editor.TurkeyCreekNMRA
<at> gmail.com*

Web

<http://www.tc-nmra.org>

Turkey Creek Division

is a 501(C)(3) organization

August Meeting Highlights pictures submitted by Audrey Mennenga

New/Old Business & Clinics



Announcements!

Larry Diehl

"The Convention was a success"

Thanks to so many volunteers

Clinic 1
Operations
Gary Hankins



Clinic 2
DCC Hardware
Accy. Control
Martin Wade

2023 Turkey Creek Division Modeling Challenge

by Larry Alfred, MMR

This is a quick reminder of the Turkey Creek Division Modeling Challenge (20th annual), coming up on Tuesday, October 24th! I hope you have your entry(s) completed; however, almost two months is still plenty of time to finish up that project you may have been working on! I'm still working on mine!!

Remember that the primary Modeling Challenge includes anything on a **square foot or less**. We have stayed with this theme for several years and I think everyone understands the requirements and the rules.

A reminder that only one square foot entry is allowed per person.

Based on a popular vote, awards will be presented for overall preference, as well as:

- Whimsy (Red Bull Award)
- Special Effects
- Best use of a Make and Take model.

This year we are again including an award for best entry on a standard business card (2"x3 1/2"). This has been titled the **Business Card Challenge**.

If you choose to enter a business card model, in addition to a square footer, you will be allowed both entries.

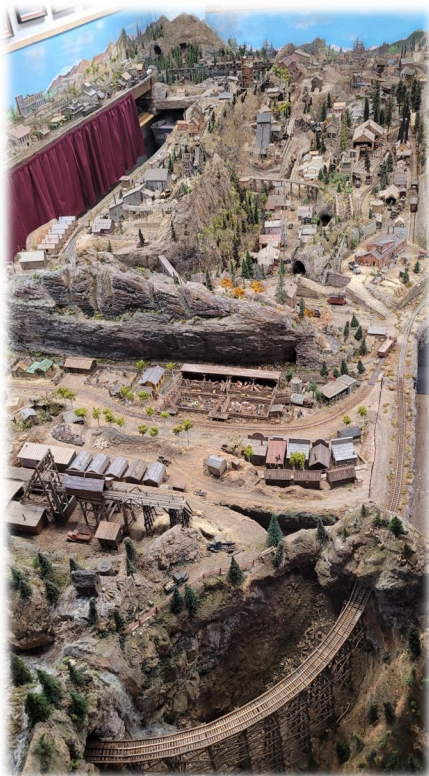
I hope that you will see this event for the "Challenge" that it was always intended to be and build something and participate!

Finally, let me emphasize here that the Modeling Challenge program was conceived to encourage everyone to participate in the enjoyment of building and displaying railroad models!! Please don't feel overwhelmed, intimidated, or...that you don't have time to join in. It is hoped that by participating you will feel a sense of "inclusion" ...that of being "one of the group."

I hope that you will attend the meeting and participate!!!

See you on the 24th!

NNGC Convention Highlights pictures submitted by Steve McKee and Martin Wade



OVER THE WIRE: Letter to the Editor Martin Wade

In today's data world the "internet, websites, and emails" are much like the telegraph wires of days long ago. They sent information and stories across the land. Recently, I received an email from someone who had stumbled on our website and newsletter simply caught by the term "lightning slinger". So here is his quick email message and a snippet from his "short story". The link above the snippet, takes you to his full story, should you be inclined to partake in his "lightning slinger" story back in the 1880s out in the wildness of Winslow Arizona... I hope you enjoy!

Greetings!

I was delighted to find your website and read your latest newsletter which has such a fine name.

I was taught the Morse Code (International version) by a railroad lightning slinger, Charlie K8OUQ in 1963.

Charlie had been a telegrapher at Western Union in Ohio and various railroads all his life when a few of us young teenagers got the ham radio bug, and he was our instructor. A few years ago, I decided to learn the American Morse Code Charlie and the old lightning slingers used and then proceeded to write a trilogy of railroad stories around the topic. Those stories are free to read or download on the internet archive here:

<https://archive.org/details/the-telegraphers-trilogy/mode/2up>

Just thought you might enjoy reading them.

PS - Here is a short video of me sending American Morse on my 'bug' telegraph key and a sounder:

<https://youtu.be/sqQtCDiFEMY>

73,

Bob

Gilbert, AZ

K7ZB

Excerpt from "[The Telegrapher's Trilogy](#)" by Robert E Houf

'He leaned against the corner of the depot in Winslow, Arizona and watched the flat cars roll by loaded with ties and telegraph poles headed to the end of the line at Canyon Diablo, 26 miles west of town.

He flicked the remnant of his cigarillo into the dirt, ground it with the toe of his cowboy boot and twisted the ends of his handlebar mustache as he turned on his heel and sauntered back into the station, hat tilted back on his blond head.

"Station" was a bit too glamorous for the shack that did duty for the hard-scrabble collection of buildings that made up Winslow in the early 1880's. Once the line was completed it would grow into a fine stop in the northern desert and eventually become home to the luxurious La Posada, a Fred Harvey hotel made famous by overnight stays from movie stars and other notable clientele as they passed between LA and the big cities out east.

Albert Einstein, John Wayne, Betty Grable, Amelia Earhart, FDR and many others enjoyed the hospitality of Fred Harvey in his flagship hotel.

But now, it was a mere frontier town in the young west - albeit with a milder temper than the lawless rail camp being set up further down the line at Canyon Diablo.

A cold winter wind blew out of the west, kicking up dirt and tumbleweeds as KL slammed the door shut and plopped down at the telegrapher's desk.

He had a good view out either side of the bay windows and it gave him pleasure to sit there, warming himself by the wood fire in the stove in the corner.

Now that he had finished checking the batteries earlier in the morning - a daily chore - and topping them off to deal with the issue he had the other night when working SG out in the canyon, he called Sam on the wire.

"SG SG KL KL"... clicked out of the sounder and he closed the switch on his key to wait for Sam to reply with his di-dit di-dit.

The two had known each other for years, both having worked at various depots in the same division of the Atlantic & Pacific Railroad.

*And when the A&P would later become the Sante Fe - actually, the Atchison, Topeka & Sante Fe Railroad - they would both still be **lightning slingers**, reminiscing about the build-out of the line through the canyon. It was a rich harvest of nearly unbelievable stories which many youngsters heard, then passed on into the twentieth century.'*

Turkey Creek Call Board (Calendar)

Please update your calendars. We have locked in the Division Meeting dates and will be filling in the Clinics & Topics over the next Month. ***Don't miss the best time to TALK TRAINS!!!***

RESERVE THE DATE July 27-29 MCoR Regional NMRA Conv. **HERE** in Overland Park, KS

Date	Event	Time	Location	Topic	Clinician
Jan 24th	Division Mtg	7 -8:45 pm	Lakeview Eastside Terr	CS&G History, Planning, & Building (Part 1)	Gary Davidson
Feb 28th	Division Mtg	7 -8:45 pm	Lakeview Eastside Terr	Master Model Railroader: Intro Mini Clinc: Tarpaper & Crossing Make & Take Introduction	Bill Scheerer Larry Diehl Miles Hale
Mar 28th	Division Mtg	7 -8:45 pm	Lakeview Eastside Terr	Building CTC Layout Panels Steel Casting Hvy Duty Flat Cars Make & Take: Final Selection	Stephen Priest Mike Brusky Miles Hale
Apr 25th	Division Mtg	7 -8:45 pm	Lakeview Eastside Terr	Operations: Ottawa Junction Making People	Chuck Hitchcock Marty Vaughn
May 23rd	Division Mtg	7 -8:45 pm	Lakeview Eastside Terr	M&T: Construction Tips	Miles Hale
Jun 27th	Division Mtg	7 -8:45 pm	Lakeview Eastside Terr	Mountain/Region Geology Making Kalin Steel Supply	Greg Ohlmacher Steve McKee
Jul 25th	No Division Mtg ---				
July 27-29th	MCoR Regional NMRA Convention		Holiday Inn Overland Park, KS	Region event with Clinics, Lay-outs and Modeling Contest	Larry Alfred
Aug 22nd	Division Mtg	7 -8:45 pm	Lakeview Eastside Terr	Layout Control: Direct & DCC Operations	Martin Wade Gary Hankins
Sept 26th	Division Mtg	7 -8:45 pm	Lakeview Eastside Terr	Layout Control: Advanced Making People	Mark Juett Marty Vaughn
Oct 24th	Division Mtg	7 -8:45 pm	Lakeview Eastside Terr	Modeling Challenge	Larry Alfred
Nov 28th	Division Mtg	7 -8:45 pm	Lakeview Eastside Terr	3D Printing MMRR Museum Update	John Fales Dale Shipman
Dec 12th	Division Mtg	7 -8:45 pm	Lakeview Tree Top Room	Holiday Social	

RailRoad Community Events



TRAIN SHOW! SAVE THE DATE! SEPTEMBER 23rd, 2023

The Ozarks Model Railroad Association in Springfield, MO is pleased to announce that we have scheduled our 2023 Train Show for Saturday, September 23rd.

The show will be held at the Ozark Empire Fairgrounds Central Buildings Event Center, 3001 N. Grant Ave, from 9am to 3pm.

Adult tickets are \$10. Children age 11 and under are free with a paid adult.

We are excited to be able to present a Train Show and share the wonderful hobby of model railroading. Mark your calendars, and we hope to see you in September!



Keep in touch:

Facebook: Ozarks Model Railroad Association

Web: www.omraspringfield.org



THE WICHITA TRAIN SHOW & SWAP MEET

www.besttrainshow.com

The Best Train Show in Wichita, KS

Sponsored in part by
Chisholm Trail Div. NMRA

Saturday, February 3, 2024 9am-5pm

Sunday, February 4, 2024 11am-4pm

Cessna Activity Center
2744 George Washington Blvd.

Operating Layouts ~ Model Contests
Clinics ~ Over 100 Dealer Tables

Scouts in
uniform
get in
FREE

HOURLY DOOR PRIZES

Admission \$8 Both Days

\$1 OFF
with non-
perishable
food item

**Military, First Responders, Fire,
Law Enforcement Admission \$1.00 with ID**
Kids 10 & under free with paid adult

Dealers: 8-foot tables (Call for pricing)

Call: Phil 316-259-5190 or email:

aylward1@cox.net

SAVE THE DATE

Sep 30 & Oct 1, 2023
Train Show

Great Overland Station || Topeka, KS

Saturday 9 to 5 & Sunday 10 to 4

Layouts / Vendors / Clinics / Railroad History

Admission: \$7 13 and up

\$5 6 thru 12

Children 5 and under are free

Barbwire BBQ Food Truck

Saturday & Sunday



Great Overland Station
701 N. Kansas Ave.
Topeka, KS

Email: www.topekamodelrailroaders.com

**Check our website and Facebook page
for show updates and information**

Want Ads:

FOR SALE: G Scale Quality Collection

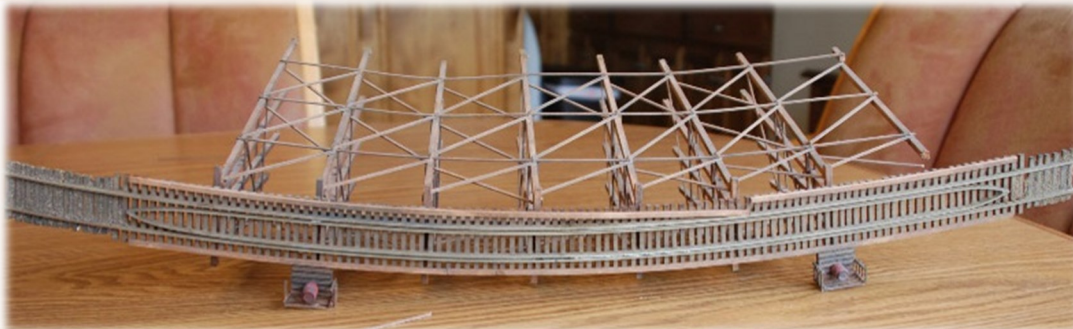
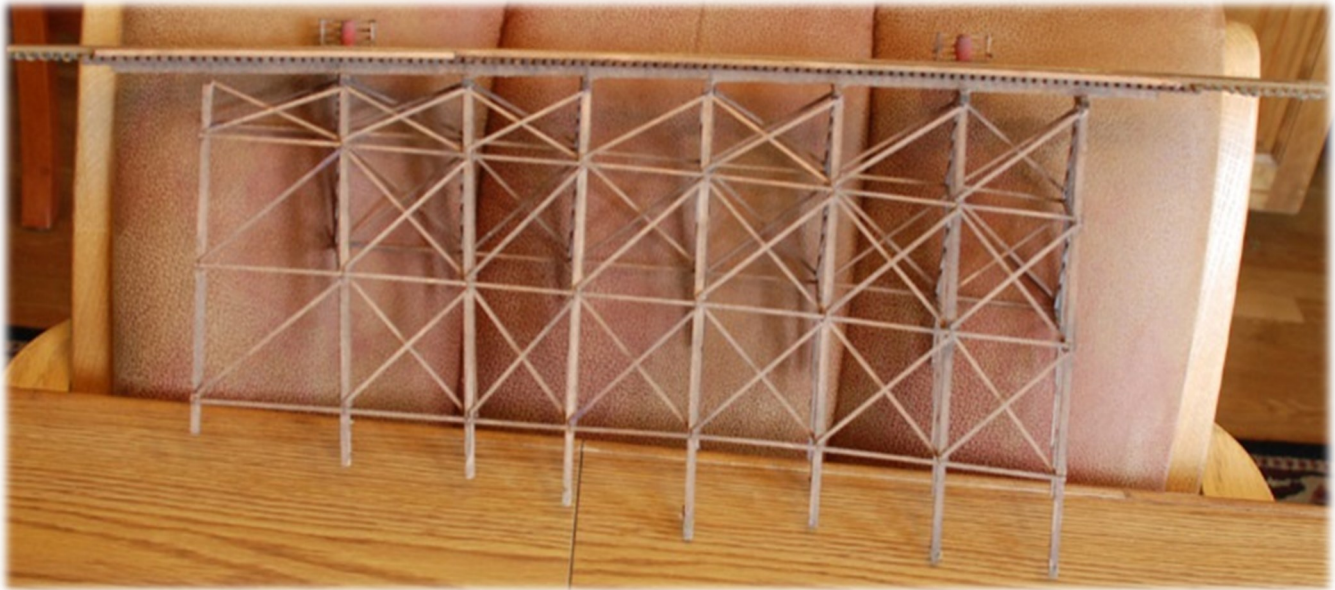
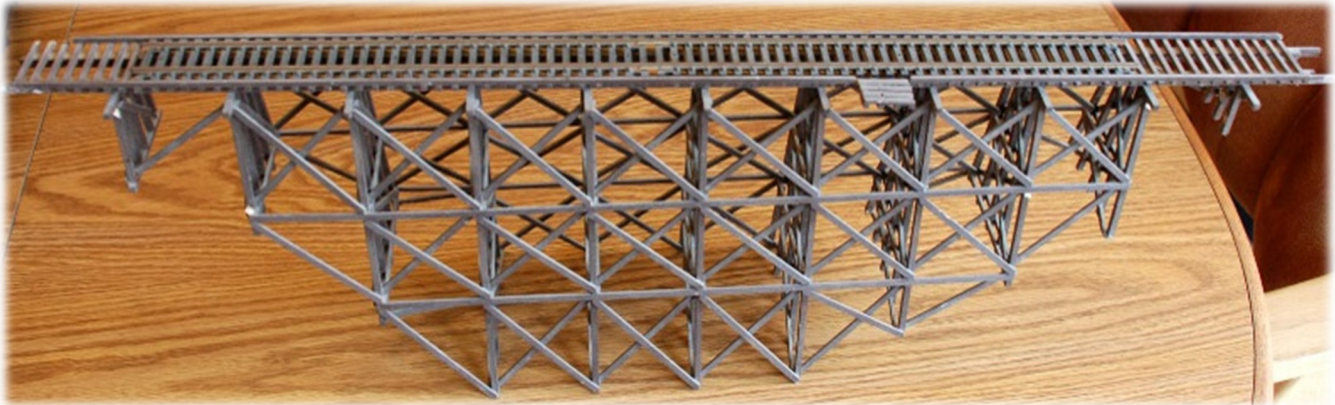
These are all G gauge pieces from the Gold Creek modular layout that used to go to shows and was always a big attraction not only because of its size but how detailed some of the equipment was. These pieces belong to Fred Hulen who many of you know. He stored the layout in his Audio Mart store at 105th and State line. Fred is moving and asked me to sell most of his model railroad items. I have these along with a lot of detail parts. The engine itself has been highly detailed.

If interested in giving the cars and engine a new home and keeping these here in KC please contact me at rgssmckee@gmail.com or call at 913-780-9009.

Thanks Steve McKee



Want Ads: More Fred Hulen Items



Want Ads: BOXES AND PACKING MATERIAL

WAIT!!!! DON'T THROW IT OUT!!!

I'm looking for small boxes (14 inches or less on any side) and bubble/peanut pack. With constant Amazon and On-line orders most of us receive tons of boxes. And then there's the guys who have been collecting and saving that stuff for years because nobody wants to see it end up in a landfill.

I am helping lots of local Railroaders sell off their stuff on Ebay. You can't believe how many small boxes I go through. If possible, they can just bring it to the next meeting and I will gladly pick them up. And future meetings too.

Thanks Steve McKee

PS. Although the previous add is G Scale most of my sales are in HO. So that would help you get an idea of size.



Turkey Creek Lightning Slinger

Our Lightning Slinger is published monthly and is a great place to learn and share information. The “value” of this newsletter lies solely in the contributions each of you offer to our Division. This newsletter has a great sampling of Events, Models, Layouts, and Bio’s. Please find your “Track” to add to our “Layout” and send your ideas and articles to the Editor. [Editor.TurkeyCreekNMRA <at> gmail.com](mailto:Editor.TurkeyCreekNMRA@gmail.com)

Don’t Lose your Slinger to the SPAM monster

Please ADD “Editor.TurkeyCreekNMRA@gmail.com”

to your Contact list on both your PC and on your Phone.

This will assure our Newsletter and General communications do not fall into the dreaded SPAM folder.

Great Connections: *(use these links for great connections)*

NMRA Turkey Creek Division Website:

www.TC-NMRA.org

NMRA Turkey Creek Division Facebook:

[NMRATurkeyCreek](https://www.facebook.com/NMRATurkeyCreek)

NMRA Mid Continent Region Website:

www.MCoR-NMRA.org

NMRA Organization Website:

www.NMRA.org

More Information: *(use these links to get started in Model Railroading)*

[NMRA Membership information](#)

[NMRA Beginners Guide](#)



Our New Meeting Location is at the Lakeview Village Senior Community. The meeting will be located in the Conference Room of the Eastside Terrace Building. Parking and Main Entrance are shown below.

Mapping Address: [9000 Park St., Lenexa, KS 66215](https://www.google.com/maps/place/9000+Park+St,+Lenexa,+KS+66215) [Click for Google Maps](#)

